

# For Sale

4777 Saucon Valley Road  
Center Valley, PA 18034



## Land Available: +/- 1.5 acres

- Listing price: \$275,000
- Subdivided or land condo opportunity from existing larger 4.2-acre tract
- Zoned I – Business Park East Subdivision
- Upper Saucon Township
- Permitted Uses: Variety of uses permitted by-right in the Enterprise Zone and all industrial zone uses

### Please contact:

**Matt Dorman**

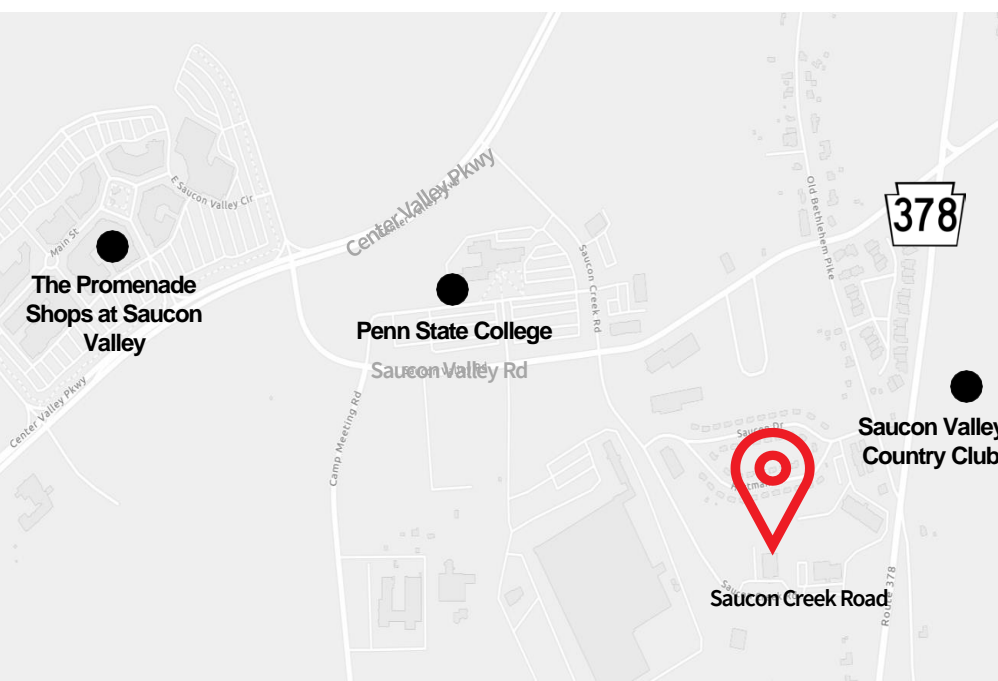
+1 484 635 3236

[matthew.dorman@am.jll.com](mailto:matthew.dorman@am.jll.com)

**Phil Schenkel**

+1 484 635 3228

[phil.schenkel@am.jll.com](mailto:phil.schenkel@am.jll.com)

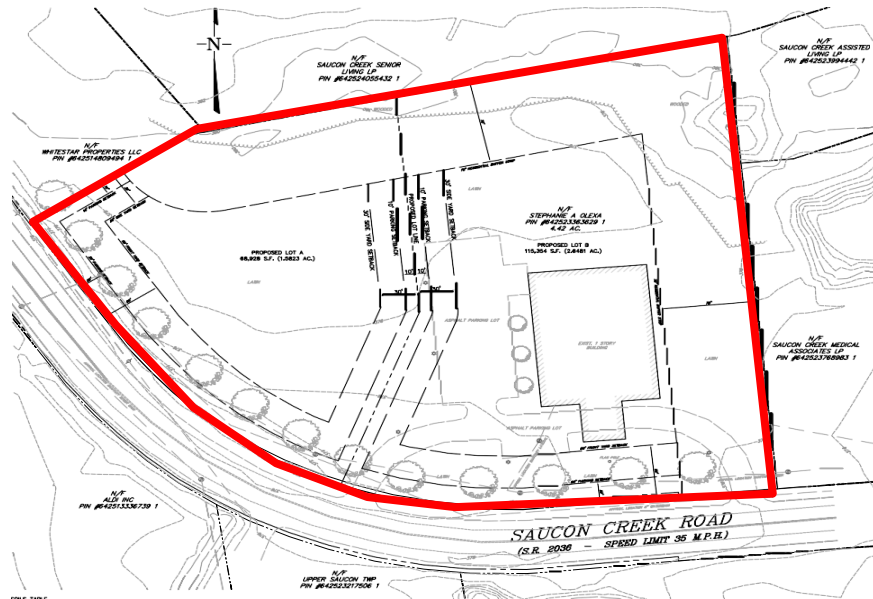




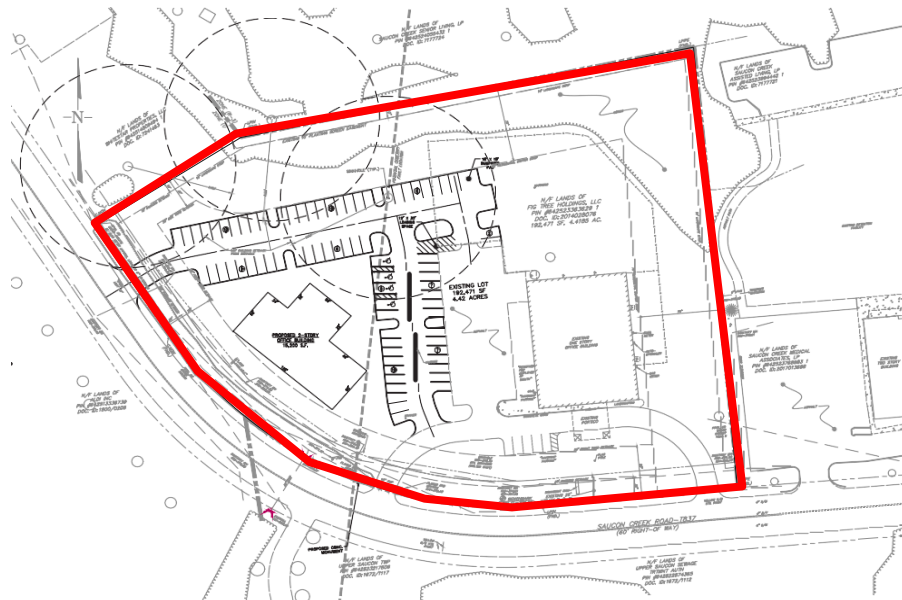
# Site Plans

4777 Saucon Valley Road  
Center Valley, PA 18034

## Option A: Subdivision Plan



## Option B: Land Condo Plan



Jones Lang LaSalle Brokerage, Inc.

1495 Valley Center Parkway, Suite 100 | Bethlehem, PA 18017 | +1 484 635 3300



Although information has been obtained from sources deemed reliable, JLL does not make any guarantees, warranties or representations, express or implied, as to the completeness or accuracy as to the information contained herein. Any projections, opinions, assumptions or estimates used are for example only. There may be differences between projected and actual results, and those differences may be material. JLL does not accept any liability for any loss or damage suffered by any party resulting from reliance on this information. If the recipient of this information has signed a confidentiality agreement with JLL regarding this matter, this information is subject to the terms of that agreement. ©2022. Jones Lang LaSalle IP, Inc. All rights reserved.