



Hollywood Media District Creative Space for Lease



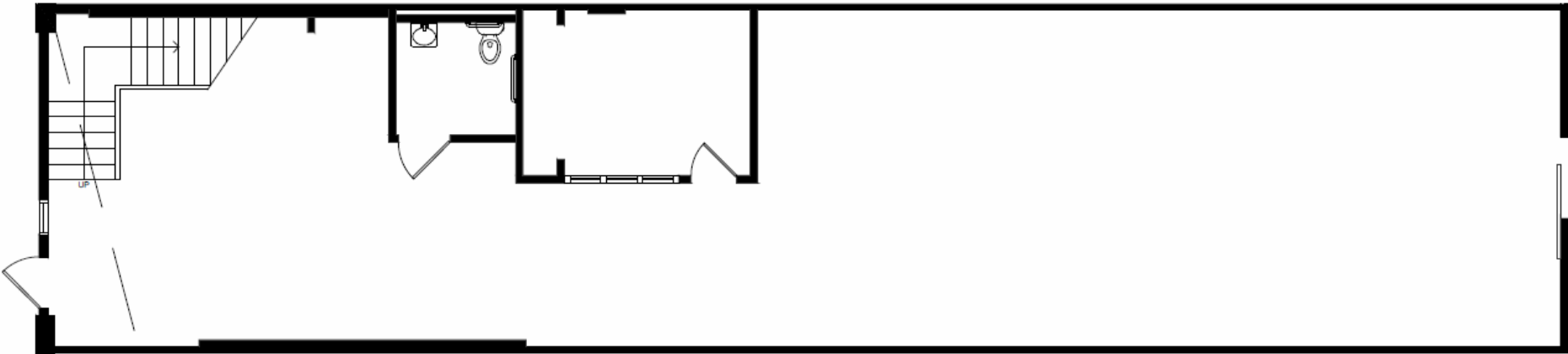
1009-1023 N. Orange Dr.
Hollywood, CA 90038



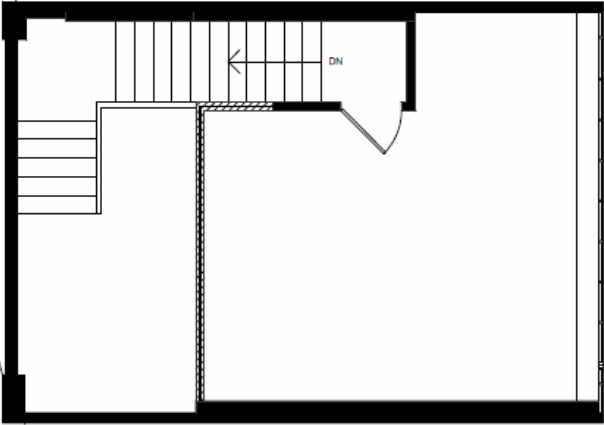
Amenities & Features

- Excellent location in the Sycamore District
- Directly accessible, private access into each space
- Move-in ready with creative finishes
- High ceilings, exposed brick, large windows, great natural light, finished concrete floors
- Located in the heart of the Hollywood Media District
- Great for production office, gallery/showroom, design & other creative uses
- Walking distance to hundreds of production companies, restaurants including Tartine, Sight Glass, Rao's and Mendocino Farms
- Private suite entrance from parking area
- On-site fiber optic connectivity





Mezzanine

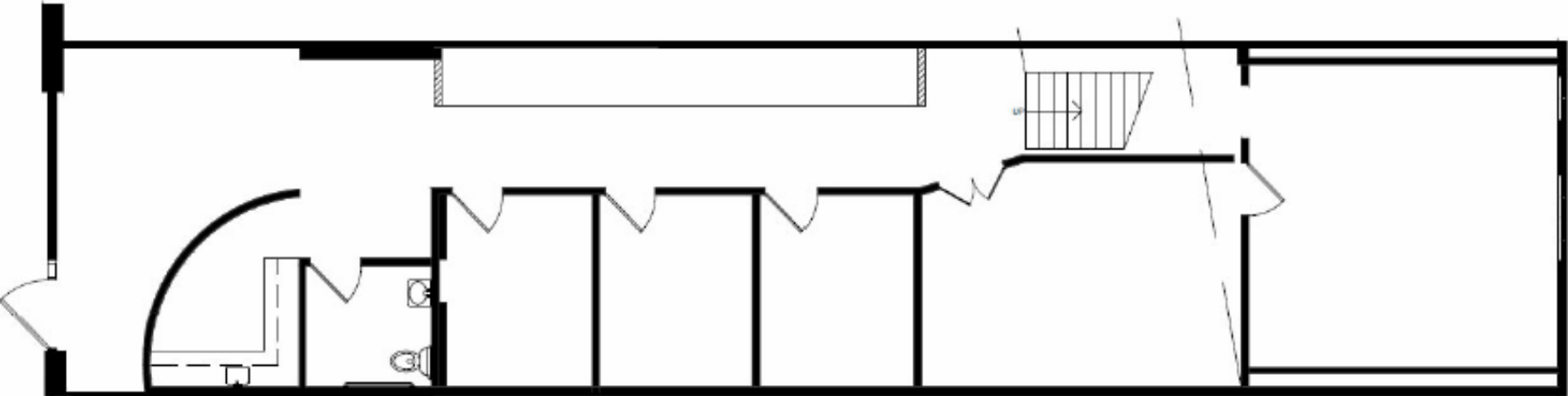
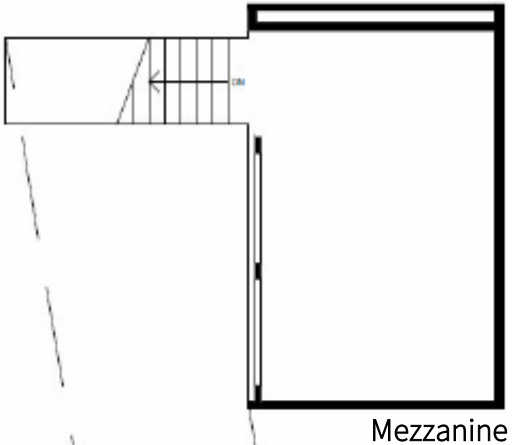


Specifications

Address:	1011 N Orange Drive Los Angeles, CA 90038
Available Space:	2,160 RSF (contiguous to 1013 N. Orange for a total of 4,340 RSF)
Rental Rate:	\$3.95/SF/month MG
Possession:	March 1, 2021
Parking:	4 spaces @ \$150/space/month

Specifications

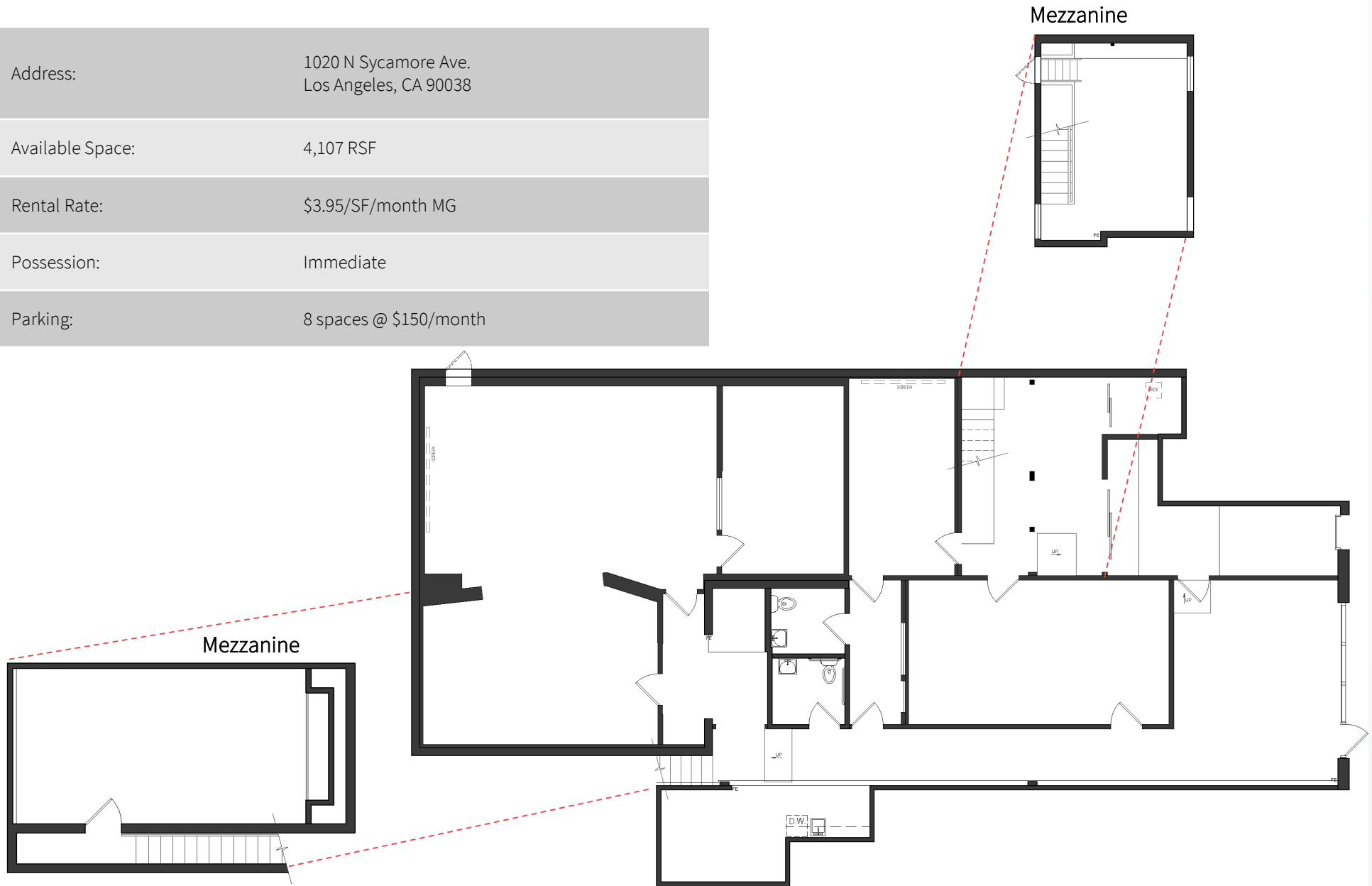
Address:	1013 N Orange Drive Los Angeles, CA 90038
Available Space:	2,180RSF (contiguous to 1011 N. Orange for a total of 4,340 RSF)
Rental Rate:	\$3.95/SF/month MG
Possession:	July 1, 2021
Parking:	4 spaces @ \$150/space/month



1020 N Sycamore

Specifications

Address:	1020 N Sycamore Ave. Los Angeles, CA 90038
Available Space:	4,107 RSF
Rental Rate:	\$3.95/SF/month MG
Possession:	Immediate
Parking:	8 spaces @ \$150/month



Area Overview



Nearby Amenities Include:





Exclusive Agents:

Caitlyn Ross
caitlyn.ross@am.jll.com
+1 213 239 6339
License #01892435

Nicole Mihalka
nicole.mihalka@am.jll.com
+1 213 239 6076
License #01322414

