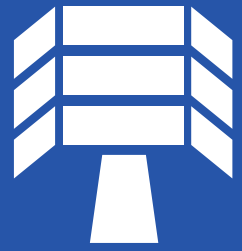


FOR LEASE

NEWLY RENOVATED OFFICE SPACE



**FULL FLOOR AVAILABLE
IN EACH BUILDING WITH
SIGNAGE OPPORTUNITY**

SECURITY
OFFICE
PARK

7000, 7004, 7008 SECURITY BOULEVARD
BALTIMORE, MD 21244

PROPERTY DETAILS: 8/1/22

BUILDING FEATURES

COMPLETE

NEW COMMON AREA AND
RESTROOM RENOVATIONS

THREE

BUILDINGS

121,000 SF

MASTER-PLANNED CAMPUS



NEW

LOCAL
OWNERSHIP



AVAILABLE SUITES

FULL FLOOR AVAILABLE IN EACH BUILDING WITH SIGNAGE OPPORTUNITY



7008 SECURITY BLVD

Suite	RSF	Availability
105	2,264	Vacant
120	3,980	Vacant
200	5,262	Vacant
210	2,433	Vacant
215	2,619	Vacant
300	16,840	Vacant

7004 SECURITY BLVD

Suite	RSF	Availability
200	5,231	Vacant
212	1,208	Vacant
220	3,100	Vacant

7000 SECURITY BLVD

Suite	RSF	Availability
101	3,914	Vacant
102	2,529	Vacant
106	1,645	Vacant
110	477	Vacant
200	17,579	Vacant
302	2,597	Vacant
308	2,166	Vacant
330	922	Vacant
332	1,313	Vacant
334	1,710	Vacant

CLASS A

OFFICE/MEDICAL SPACE

COMPETITIVE

RENTAL RATE

FULL FLOOR

AVAILABLE IN EACH BUILDING

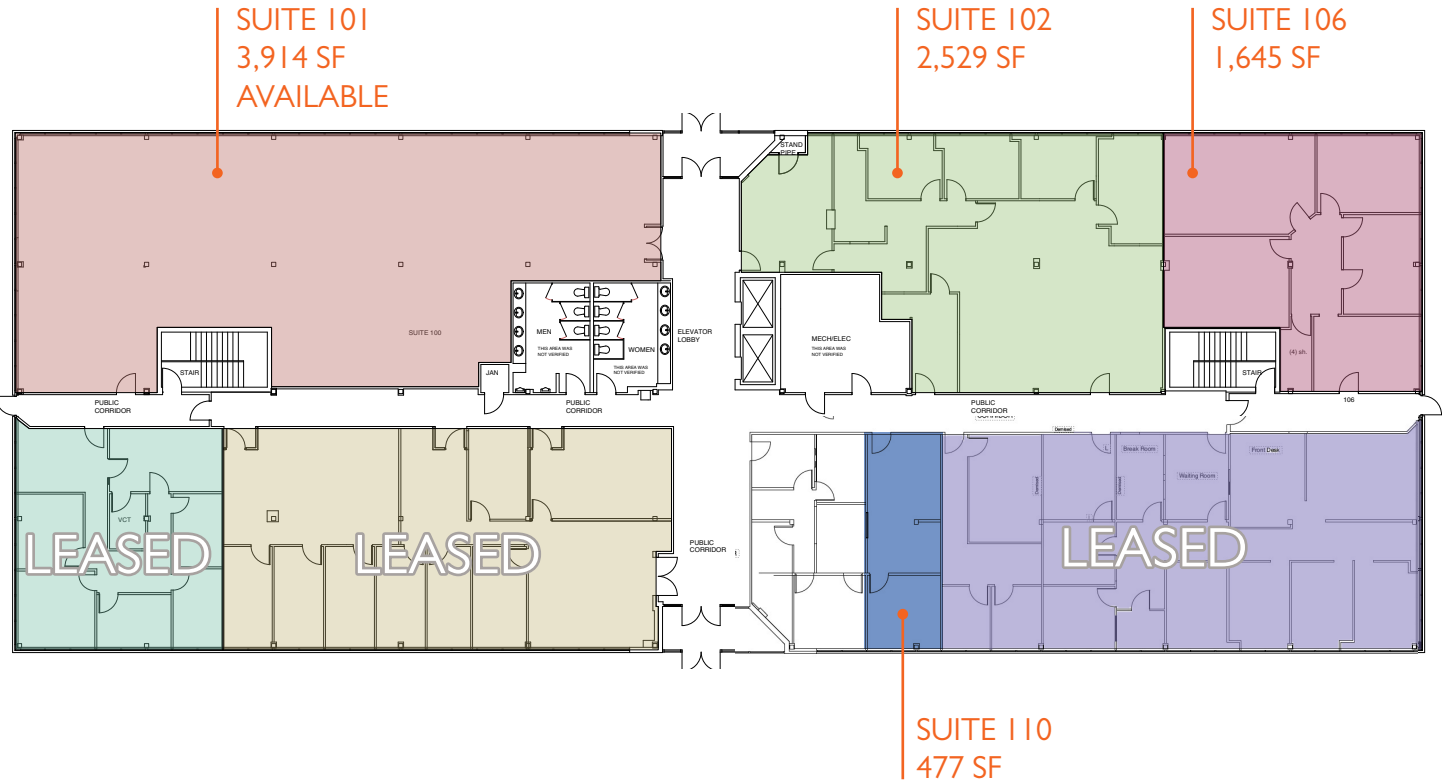
SIGNAGE

OPPORTUNITY



SECURITY
OFFICE
PARK

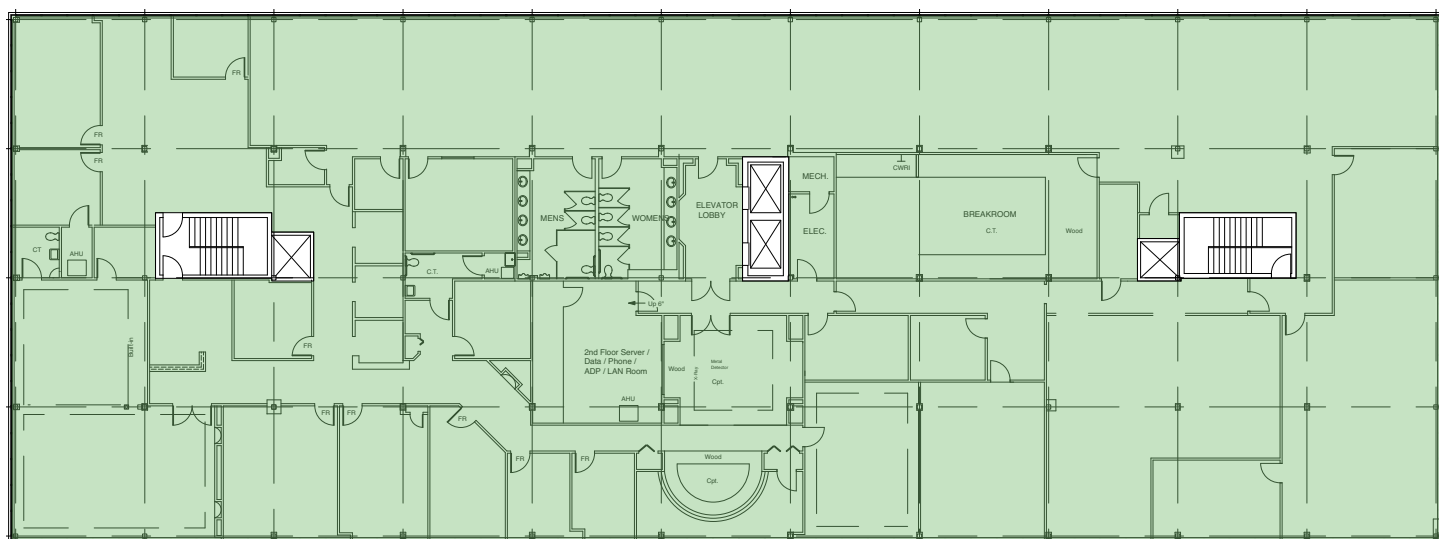
7000 SECURITY BOULEVARD
1ST FLOOR - 8,565 SF AVAILABLE



SECURITY OFFICE PARK

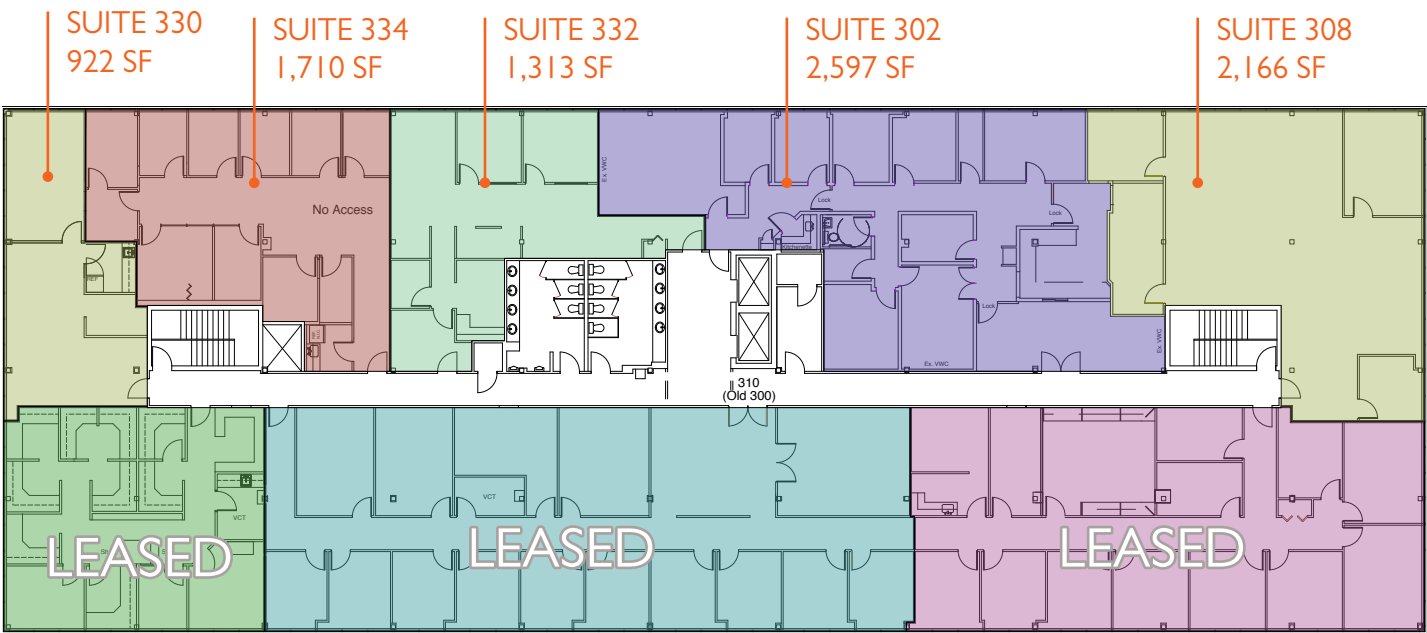
7000 SECURITY BOULEVARD

2ND FLOOR | 17,579 S AVAILABLE



SECURITY
OFFICE
PARK

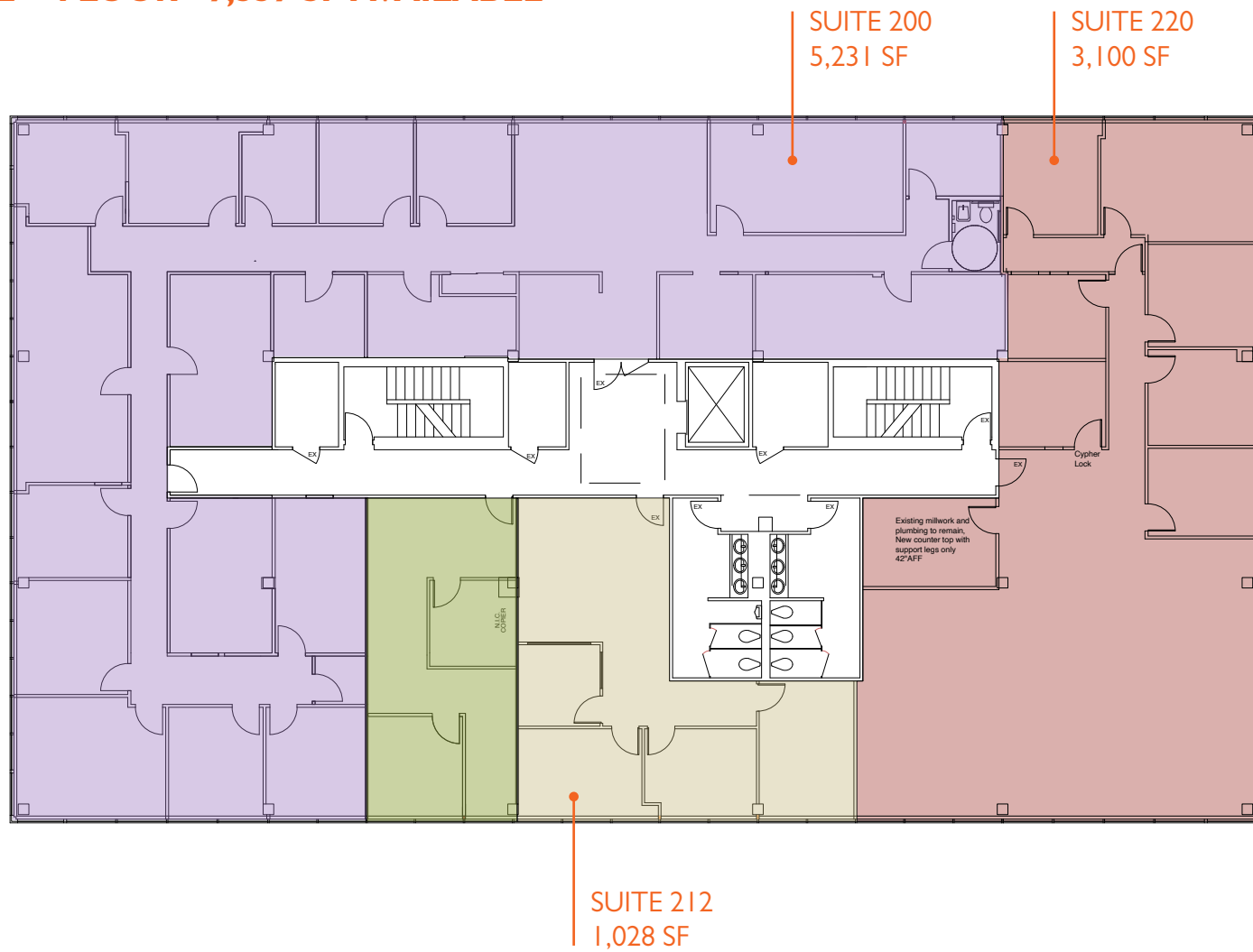
7000 SECURITY BOULEVARD
3RD FLOOR - 8,708 SF AVAILABLE



SECURITY OFFICE PARK

7004 SECURITY BOULEVARD

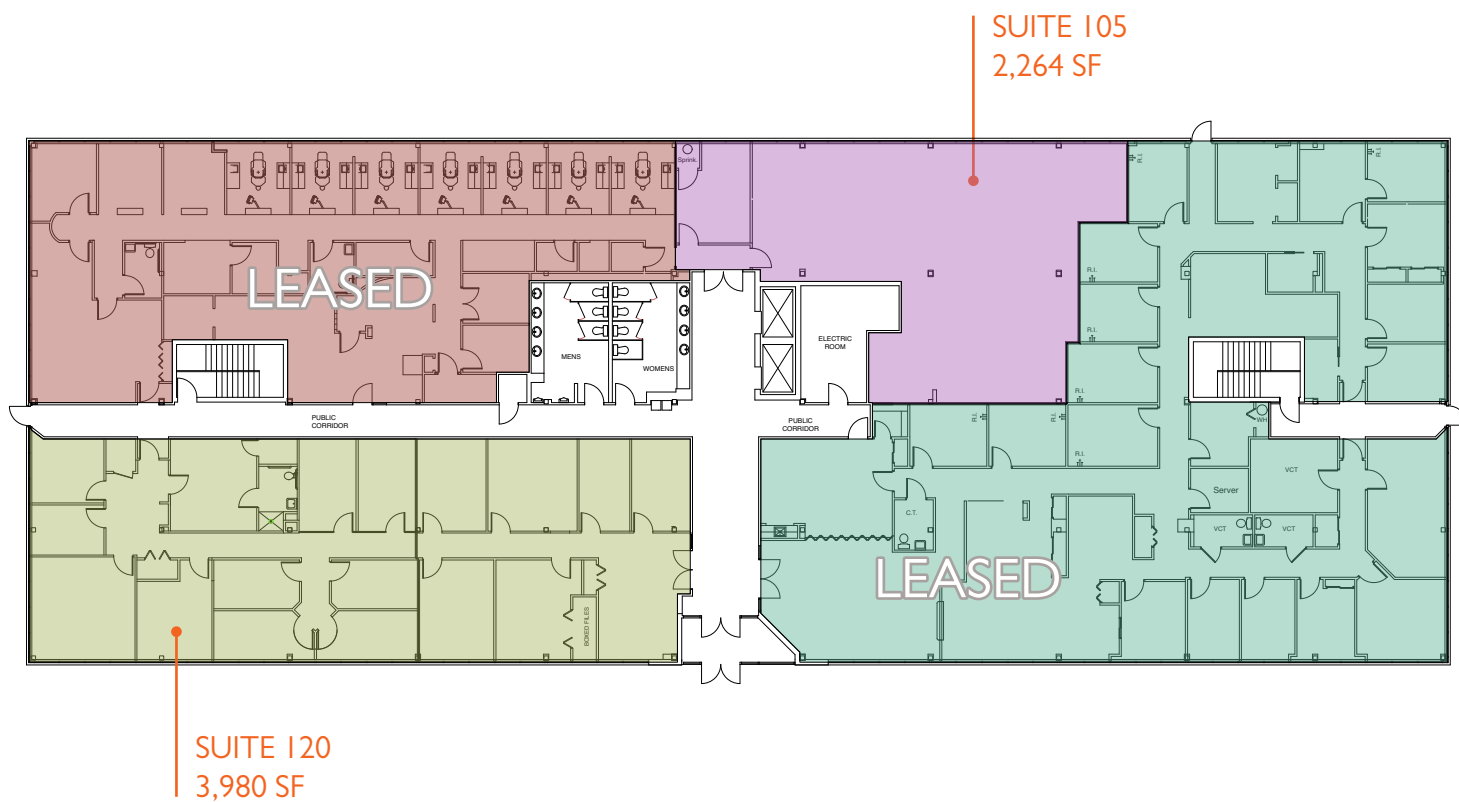
2ND FLOOR - 9,359 SF AVAILABLE



SECURITY OFFICE PARK

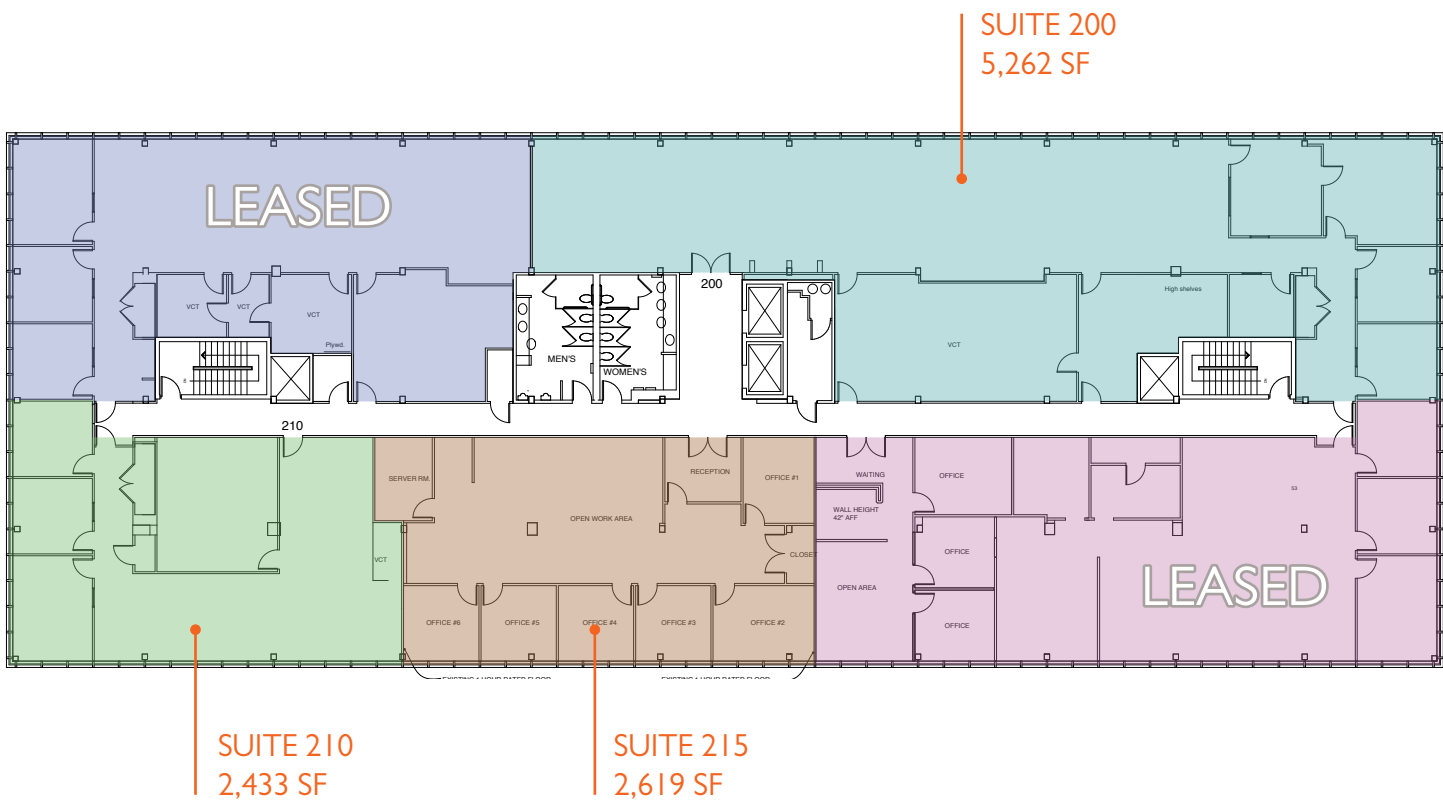
7008 SECURITY BOULEVARD

1ST FLOOR - 6,244 SF AVAILABLE



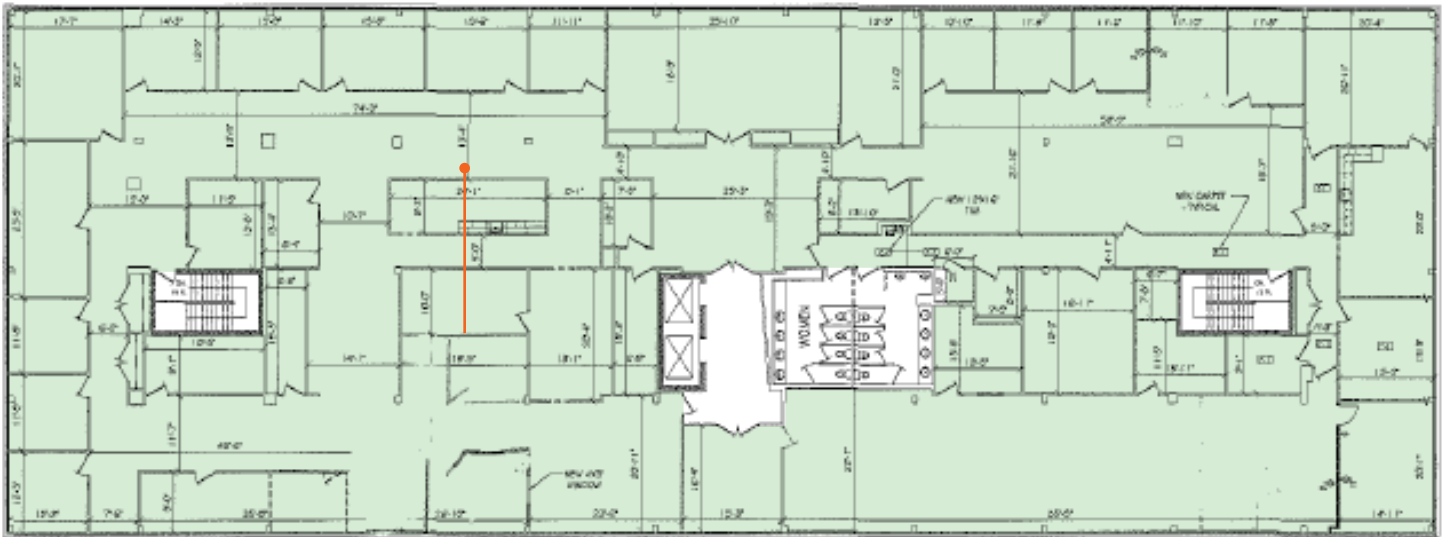
SECURITY
OFFICE
PARK

7008 SECURITY BOULEVARD
2ND FLOOR - 10,314 SF AVAILABLE



SECURITY
OFFICE
PARK

7008 SECURITY BOULEVARD
3RD FLOOR - 16,840 SF AVAILABLE



LOCATION & AMENITIES



FREE and ample parking

MINUTES to the Baltimore Beltway, I-95, I-795 and I-70

MTA STOP located in front of the park

CLOSE TO Social Security Administration (SSA) and Centers for Medicaid/Medicare Services

WALKING distance to restaurants, banks and major regional mall

CONTACT

For leasing information, contact:

Rob Freedman SIOR
410-952-9444
rob.freedman@jll.com

