

# 4 Allegheny Center

4 East Commons  
Pittsburgh, PA 15212

Modern office building with parking located on Pittsburgh's North Side



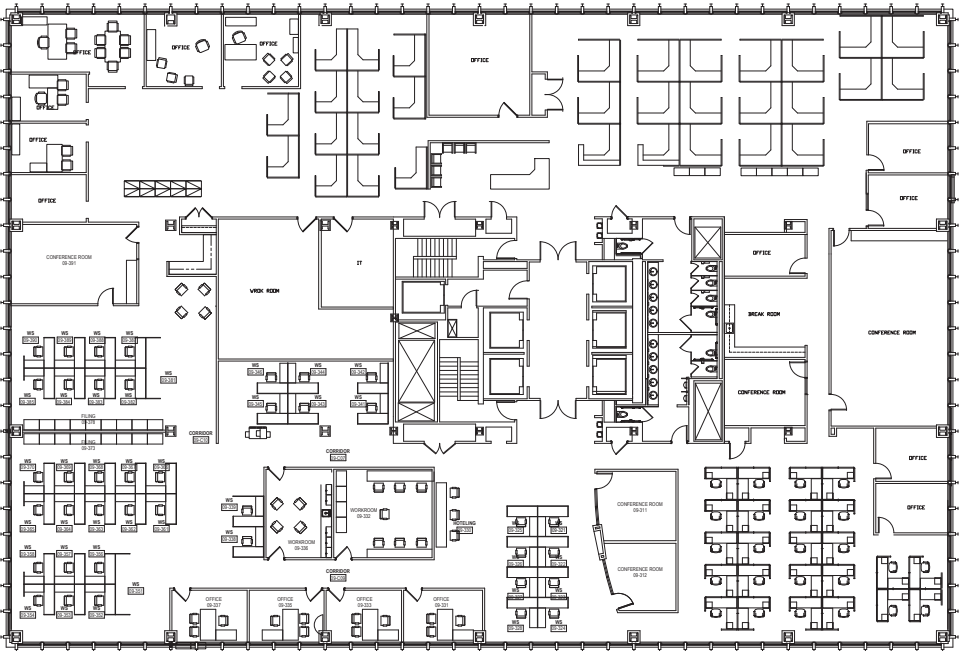




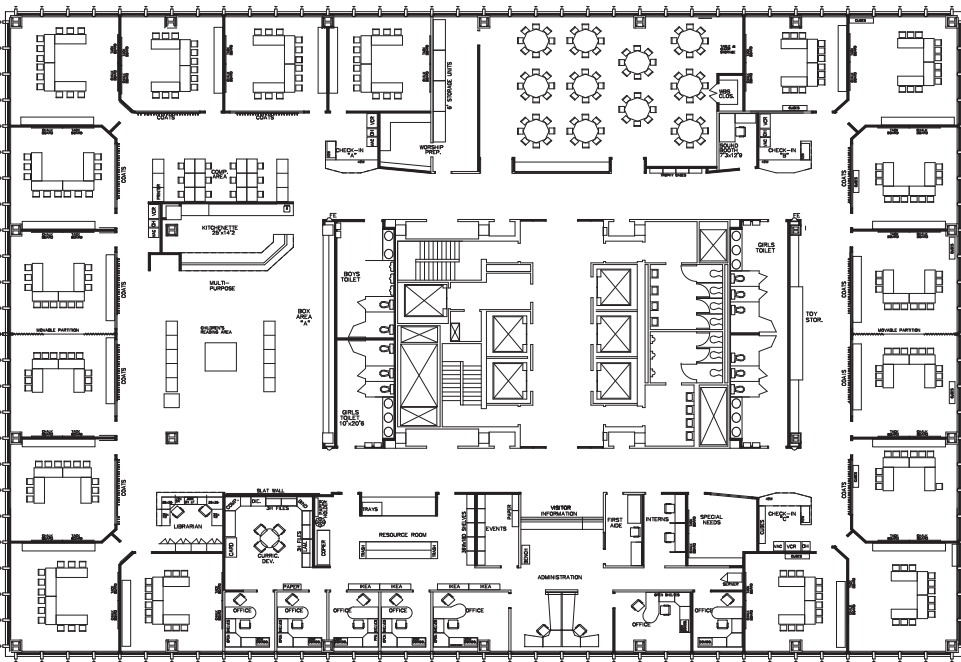
Building Notes

The facility has a campus-like setting with quick access to abundant parking and major roadways along with great views of Pittsburgh's skyline. Building has 318 car, elevated parking garage connected by a covered walkway. The structure also has lobby security desk manned 24 hours a day, 7 days a week.

9th floor



3rd floor





## 4 Allegheny Center

4 East Commons | Pittsburgh, PA 15212

For Lease

# Highlights

- Two full floors available
  - 9th floor (24,294 sq. ft.) recently built out and move-in ready
  - 3rd floor (24,294 sq. ft.) to be renovated to suit specific layout needs
- Location, highways, and transit access facilitate hiring from anywhere in the region
- Nearby amenities include restaurants, fitness, hotels, and entertainment
- Efficient space with abundant natural light & excellent views
- Corporate quality mechanical systems with professional engineering on-site
- Impressive architectural pedigree, building designed by Mies van der Rohe's firm for IBM in 1976
- Total building size is 231,426 sq. ft.
- Dedicated 318 car parking garage



## Contact Us

**Jeremy Z. Kronman, CCIM, SIOR**

Vice Chairman

+1 412 394 9848

[jeremy.kronman@cbre.com](mailto:jeremy.kronman@cbre.com)

**Andrew B. Miller, CCIM**

Senior Vice President

+1 412 394 9807

[andrew.miller@cbre.com](mailto:andrew.miller@cbre.com)

© 2021 CBRE, Inc. All rights reserved. This information has been obtained from sources believed reliable, but has not been verified for accuracy or completeness. You should conduct a careful, independent investigation of the property and verify all information. Any reliance on this information is solely at your own risk. CBRE and the CBRE logo are service marks of CBRE, Inc. All other marks displayed on this document are the property of their respective owners, and the use of such logos does not imply any affiliation with or endorsement of CBRE. Photos herein are the property of their respective owners. Use of these images without the express written consent of the owner is prohibited.

**CBRE**