

ARETE

[ə'ret]

3720 N VANCOUVER
PORTLAND, OR 97227





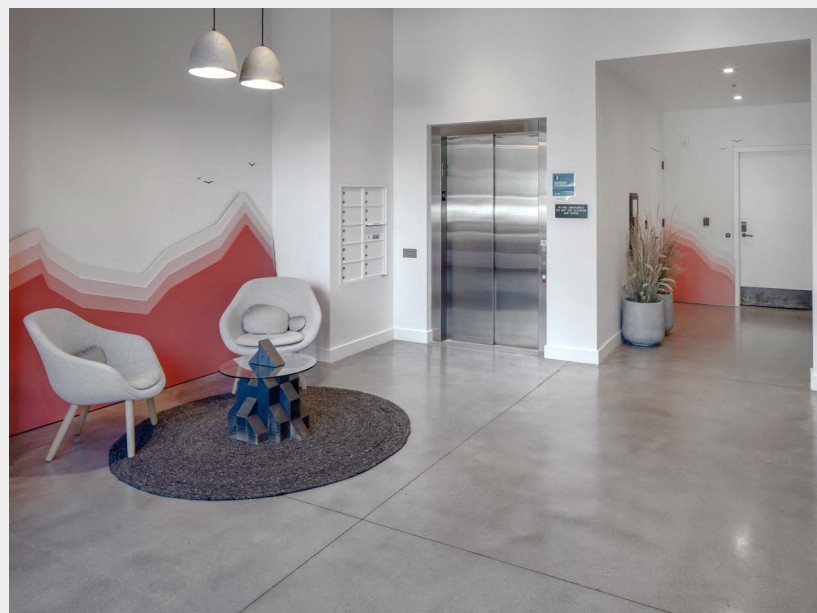
PRIVATE TERRACES ON EVERY FLOOR

YOUR ASCENT STARTS HERE



FLOOR TO CEILING GLASS LINES

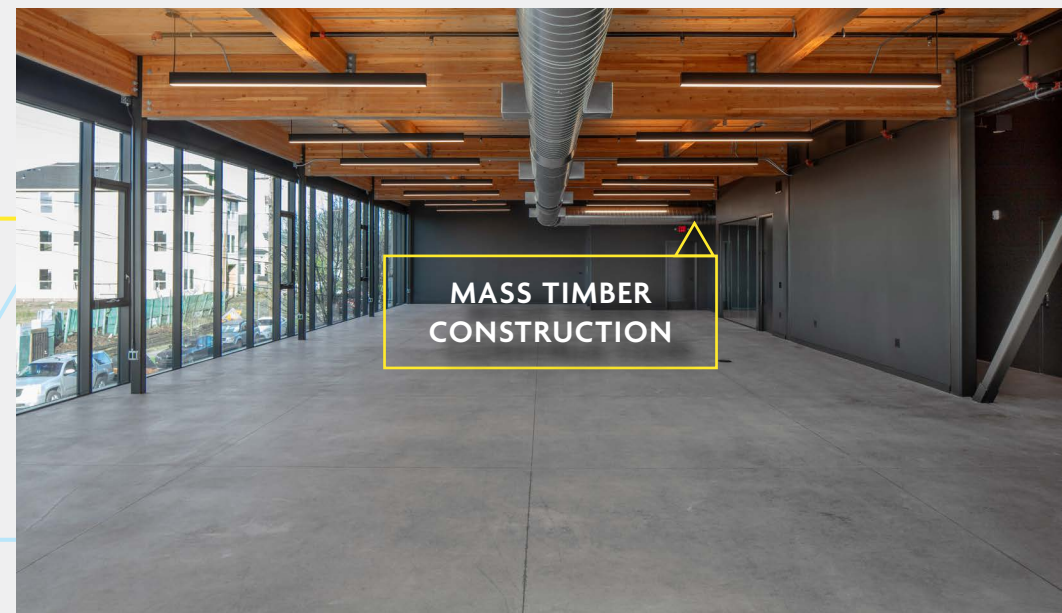
In the heart of Portland's North Williams corridor, Arête offers a thoughtfully designed and strategically executed workspace for today's evolving workforce. A place where thought leaders, adventurers and entrepreneurs thrive. Where flexibility and creativity converge to create limitless opportunities. Where innovation and efficiency propel people towards the most excellent versions of themselves.



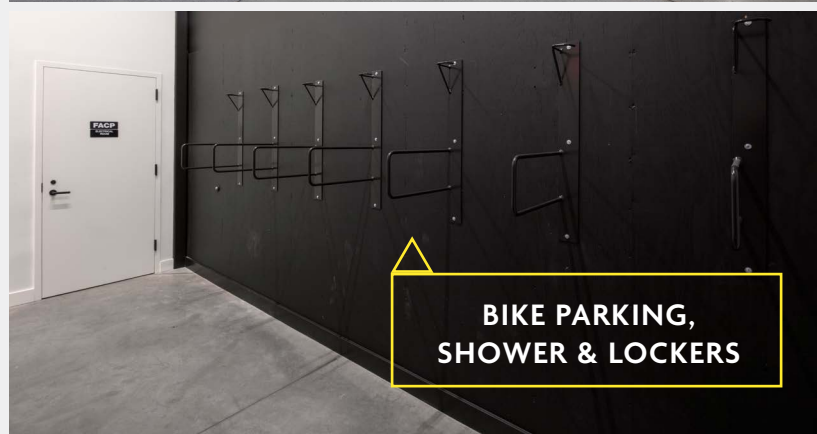
± 20,000 SF OF CLASS A OFFICE SPACE

± 5,300 SF COLUMN-FREE FLOOR PLATES

13'-6" CEILING HEIGHTS



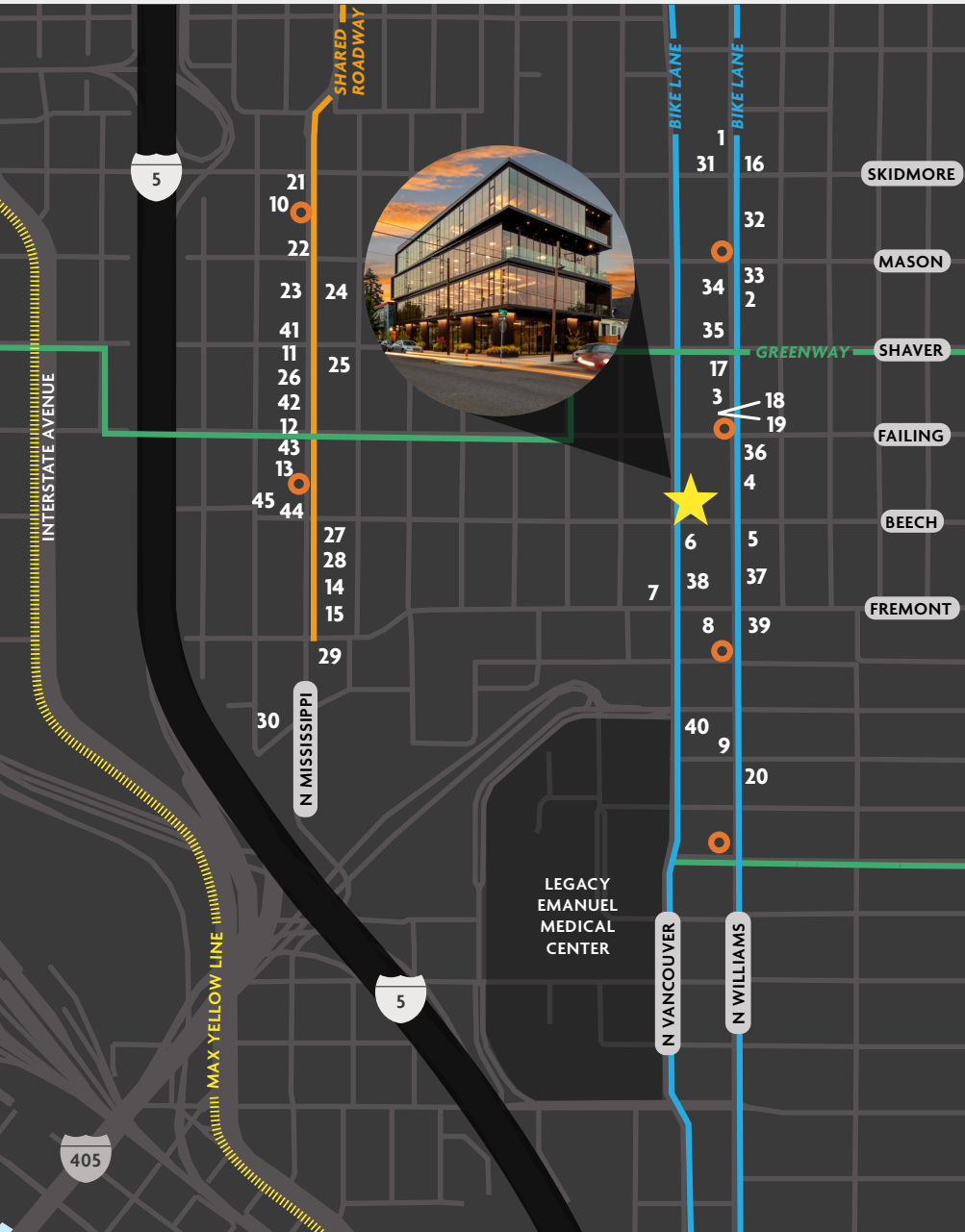
MASS TIMBER CONSTRUCTION



BIKE PARKING, SHOWER & LOCKERS

- ARÊTE OFFERS:**
- ▶ Easy to space-plan floor plates
 - ▶ Voluminous ceiling heights
 - ▶ Abundant natural light
 - ▶ Expansive rooftop space
 - ▶ Innovative design elements throughout

THE NORTH WILLIAMS CORRIDOR



DINE IN & TAKE-OUT

- | | |
|---------------------------|-----------------------|
| 1. Rovente | 9. The People's Pig |
| 2. XLB | 10. Prost! Food Carts |
| 3. Las Primas | 11. Gravy |
| 4. EaT: An Oyster Bar | 12. Radar Restaurant |
| 5. Life of Pie | 13. Little Big Burger |
| 6. The Whole Bowl | 14. Mississippi Pizza |
| 7. Brass Tacks Sandwiches | 15. Por Que No |
| 8. New Seasons Market | |

BREWERIES & BARS

- | | |
|--------------------|------------------------|
| 16. Vendetta | 24. Traveling Taphouse |
| 17. The Box Social | 25. The 1905 |
| 18. Hopworks North | 26. Sidecar 11 |
| 19. Lompoc Brewing | 27. Stormbreaker |
| 20. The Waypost | 28. Psychic Bar |
| 21. Prost! | 29. Ecliptic Brewing |
| 22. The Rambler | 30. Liberty Glass |
| 23. Interurban | |

COFFEE & PASTRIES

- | | |
|------------------------|-----------------------------|
| 31. Coco Donuts | 39. Memoz Dessert Café |
| 32. Saint Cupcake | 40. Compass Coffee Roasting |
| 33. Dos Hermanos | 41. The Fresh Pot |
| 34. Jinju Patisserie | 42. Townshend's Teahouse |
| 35. Either/OR | 43. Blue Star Donuts |
| 36. Ristretto Roasters | 44. Ruby Jewel |
| 37. What's the Scoop? | 45. Fly Awake Tea House |
| 38. Bread & Honey Café | |

BIKETOWN



For leasing information:

ANNALORE RODMAN
Licensed in OR
+1 503 546 3671
annalore.rodman@am.jll.com

CARTER BEYL
Licensed in OR
+1 503 505 7120
carter.beyl@am.jll.com

Jones Lang LaSalle Brokerage, Inc. | 1120 NW Couch, Suite 500, Portland, OR 97209

©2021 Jones Lang LaSalle IP, Inc. All rights reserved. All information contained herein is from sources deemed reliable; however, no representation or warranty is made to the accuracy thereof.

