



Available Retail 1898 Union Street

San Francisco, CA



Rhonda Diaz Caldewey, EVP
LIC #01072594 | +1 415 271 1900
rhonda.diaz@am.jll.com

AVAILABLE

Prime Corner with tremendous frontage and merchandise display windows. 1898 Union at Laguna is the best corner in the Union Street corridor.

Rich in history, this Cow Hollow retail corridor is authentic and diverse, attracting locals and visitors alike. From cafe dwellers, apparel and jewelry shoppers, fitness buffs, and the artistically inclined. Cow Hollow has an active dining and nightlife scene.

SIZE 1,977 Square Feet

ASKING RENT \$100 PSF

THRIVING NEIGHBORHOOD RETAIL

Beauty & Wellness

Sephora
Lush

Leisurewear

Lorna Jane
Lulu Lemon
Lucy
Nike

Accessories

Veo Optical
See Eyewear
Shaw Shoes
Nine West
Jest Jewels

Fitness

Equinox
Crunch
Soulcycle

Food

Perry's
Roam Burger
Belga
Unami Burger
La Boulange

DEMOGRAPHICS

AVERAGE INCOME

POPULATION

1/2 MILE

\$167,122

24,775

1 MILE

\$145,773

89,426

3 MILE

\$119,475

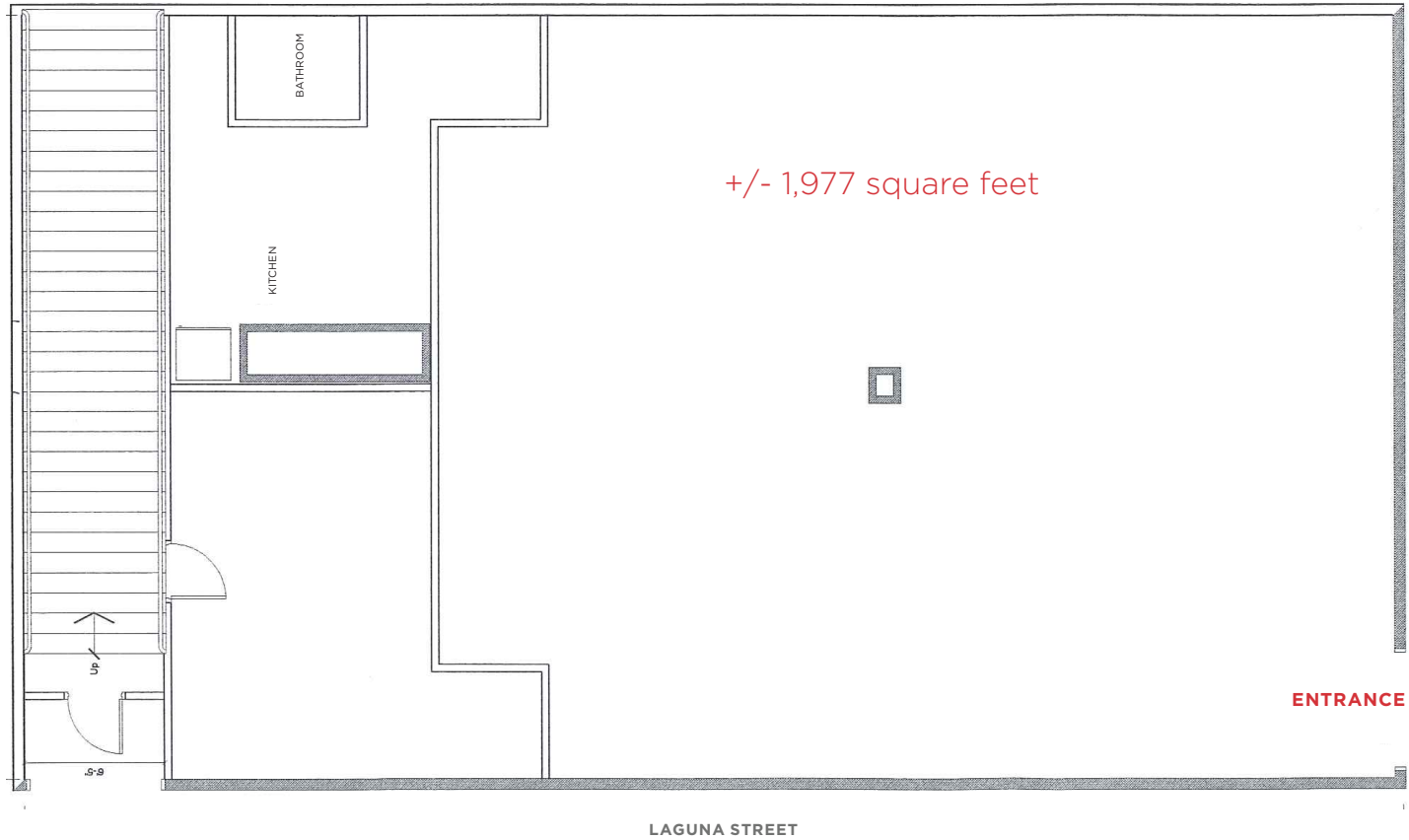
400,876

Rhonda Diaz Caldewey, Executive Vice President

+1 415 271 1900 | rhonda.diaz@am.jll.com | LIC #01072594



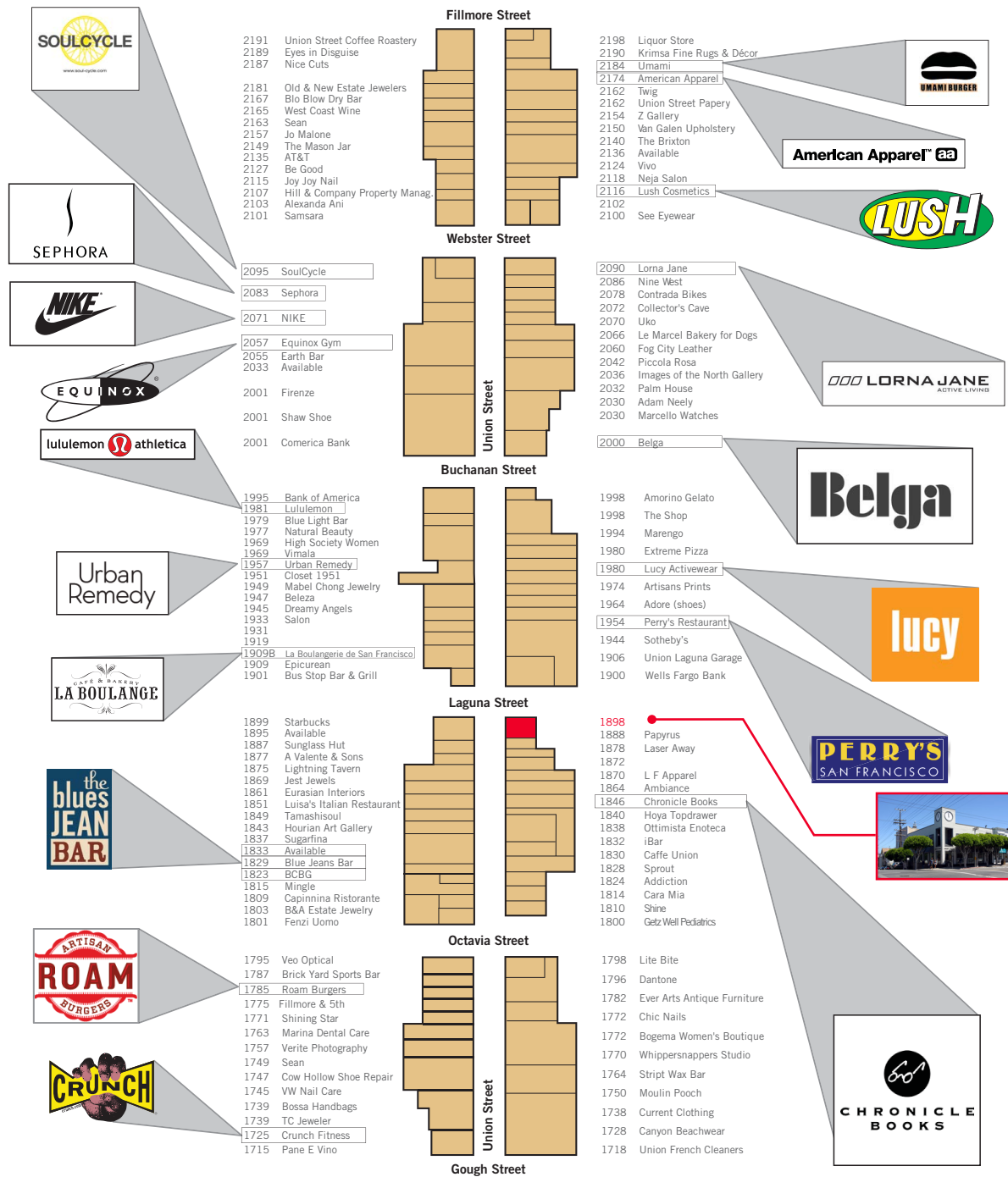
FLOOR PLAN



Rhonda Diaz Caldewey, Executive Vice President

+1 415 271 1900 | rhonda.diaz@am.jll.com | LIC #01072594





Rhonda Diaz Caldevey, Executive Vice President

+1 415 271 1900 | rhonda.diaz@am.jll.com | LIC #01072594

