

1650
ARCH

SUPERIOR
SUSTAINABILITY.
LEADING
LOCATION.

**CLASS A SPACE
AVAILABLE**

1650 ARCH STREET
PHILADELPHIA, PA



1650 ARCH

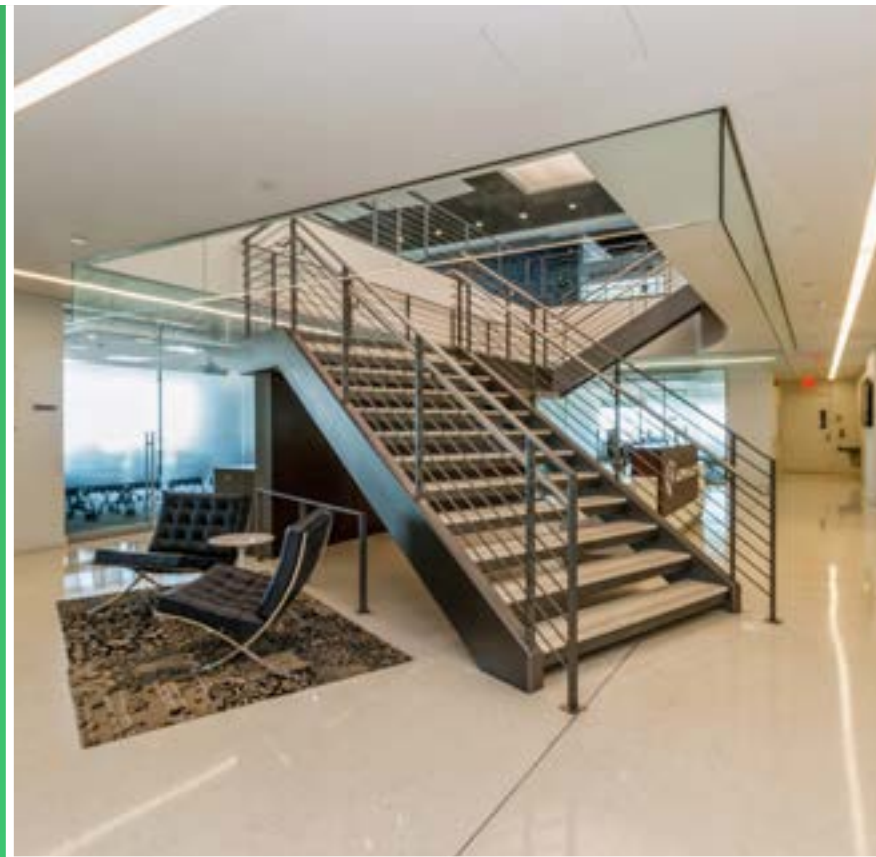
Optimize your workplace at 1650 Arch Street, the sustainability leader of Market Street West. Gold Leed® and ENERGY STAR® rated, 1650 Arch features green design throughout, including efficient eco-friendly layouts that meet the highest national sustainability standards. Floor-to-ceiling glass window lines offer ample natural light to reduce energy consumption, and showcase expansive city views of the Benjamin Franklin Parkway,

Delaware River, and City Hall. Tenants can utilize the on-site management team, conference and collaboration center, and Green Line Café, serving locally sourced refreshments, throughout the workday. Direct on-site access to the Suburban Station concourse encourages an environmentally friendly commute, while 1650 Arch's central location in the amenity-rich CBD provides ample access to nearby dining and retail hot spots.

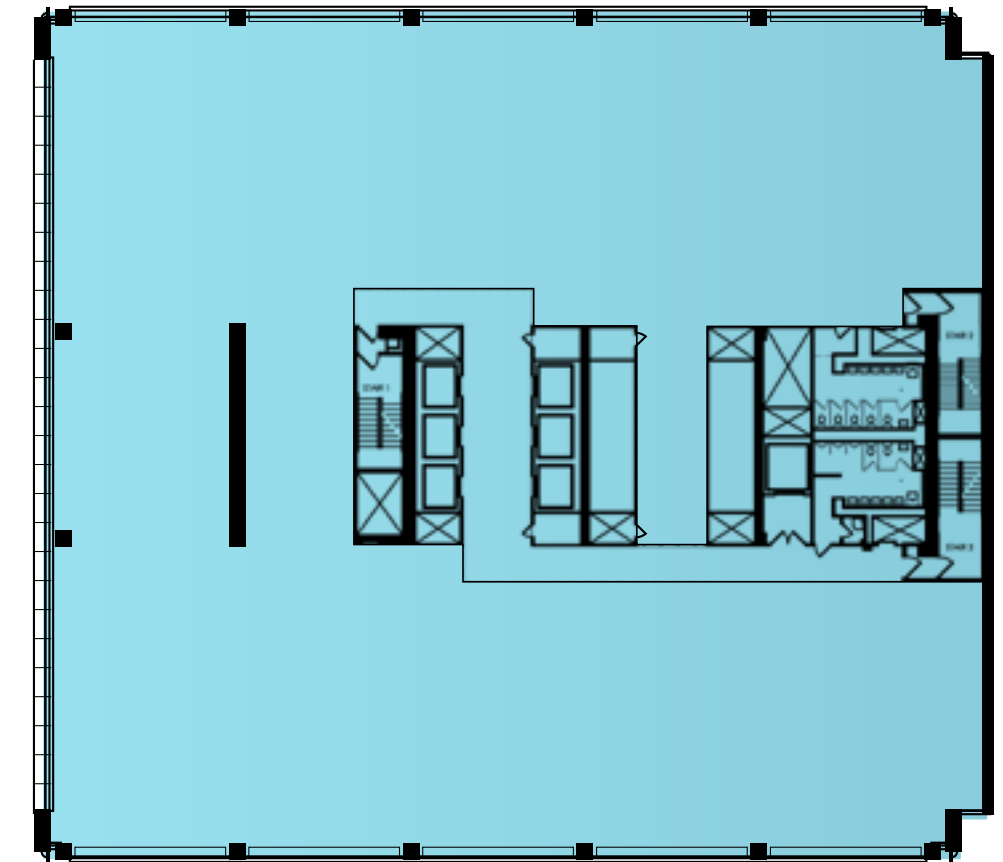


PROPERTY HIGHLIGHTS:

- Class A space in the heart of Market Street West
- Over 200,000 SF available
- 23,000+ SF, highly efficient floor plates
- On-site management
- Gold Leed® and ENERGY STAR® rated
- Sustainable design, including floor to ceiling glass line, optimized for natural light and maximum efficiency
- Unmatched city views on upper-floors
- On-site, tenant-only conference center
- On-site Green Line Café serving locally sourced coffee and baked goods
- Direct access to SEPTA's Suburban Station public transit concourse



TYPICAL FULL FLOOR



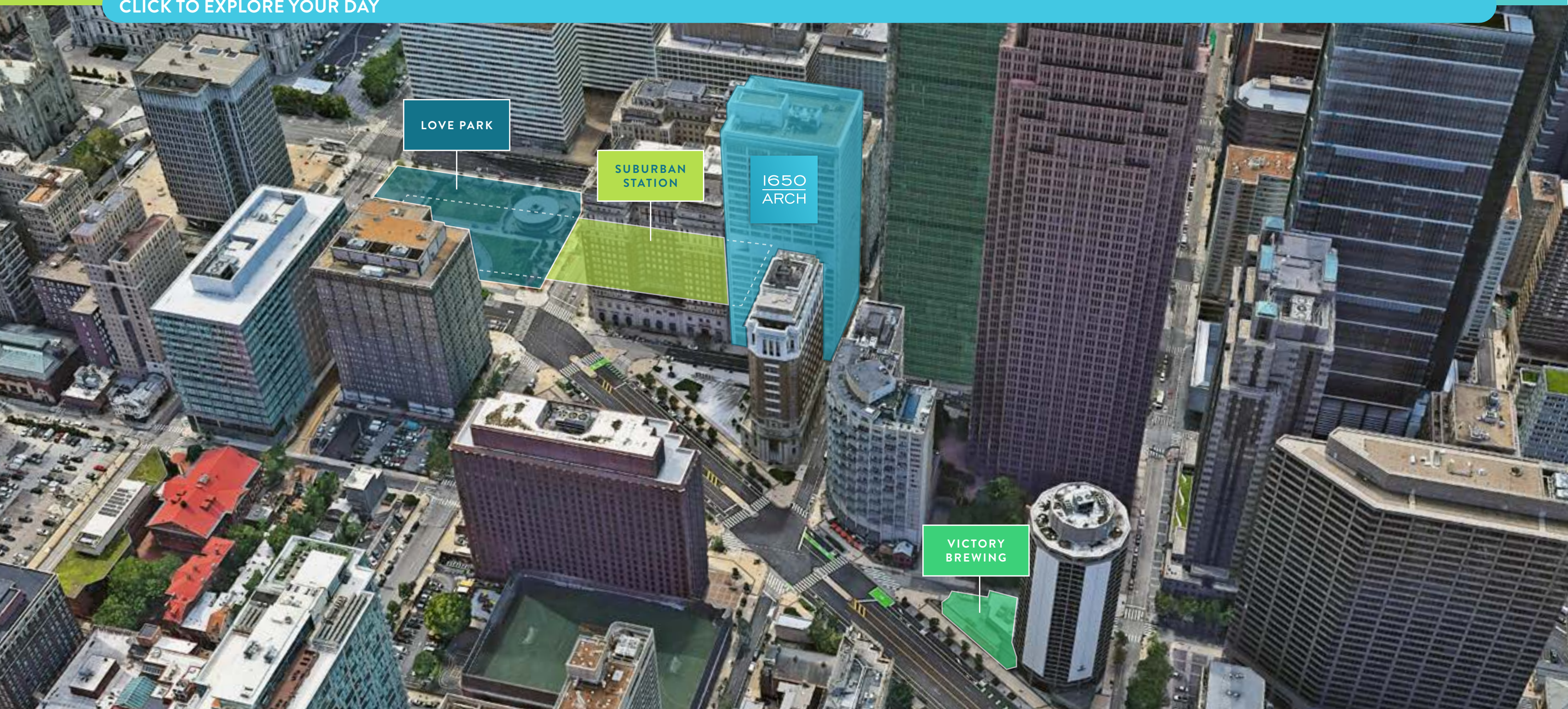
AVAILABILITIES:

- | | | |
|------------------------|-------------------------|-------------------------|
| • 22nd floor: 6,710 SF | • 16th floor: 21,211 SF | • 10th floor: 23,207 SF |
| • 21st floor: 1,854 SF | • 14th floor: 23,207 SF | • 9th floor: 23,207 SF |
| • 19th floor: 3,755 SF | • 13th floor: 23,207 SF | • 8th floor: 7,519 SF |
| • 19th floor: 3,404 SF | • 12th floor: 23,207 SF | • 3rd floor: 21,404 SF |
| • 17th floor: 3,657 SF | • 11th floor: 23,207 SF | • 2nd floor: 13,046 SF |

1650 ARCH

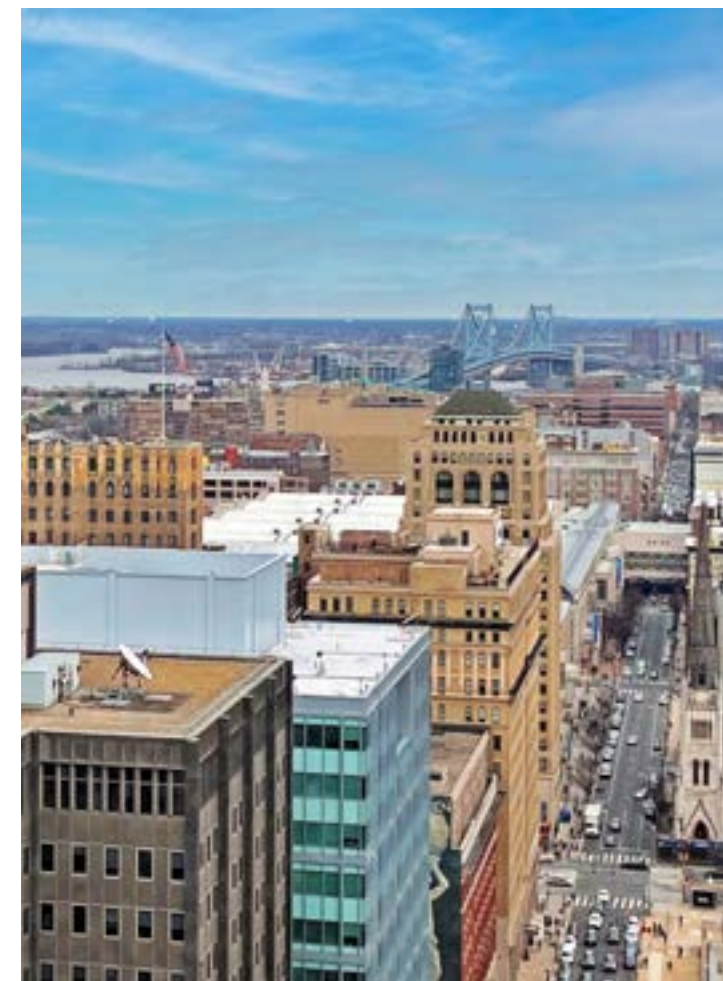
CREATE A HEALTHIER ATMOSPHERE FOR YOUR TEAM

[CLICK TO EXPLORE YOUR DAY](#)



1650 ARCH

A ROOM WITH A VIEW



CONTACT:

Kevin M. Maloney
+ 1 215 399 1833

David Mendez
+1 215 988 5563

JLL | Jones Lang LaSalle Brokerage, Inc.
1650 Arch Street, Suite 2500
Philadelphia, PA 19103
+1 215 988 5500



Although information has been obtained from sources deemed reliable, neither Owner nor JLL makes any guarantees, warranties or representations, express or implied, as to the completeness or accuracy as to the information contained herein. Any projections, opinions, assumptions or estimates used are for example only. There may be differences between projected and actual results, and those differences may be material. The Property may be withdrawn without notice. Neither Owner nor JLL accepts any liability for any loss or damage suffered by any party resulting from reliance on this information. If the recipient of this information has signed a confidentiality agreement regarding this matter, this information is subject to the terms of that agreement. ©2022. Jones Lang LaSalle Brokerage, Inc. All rights reserved.