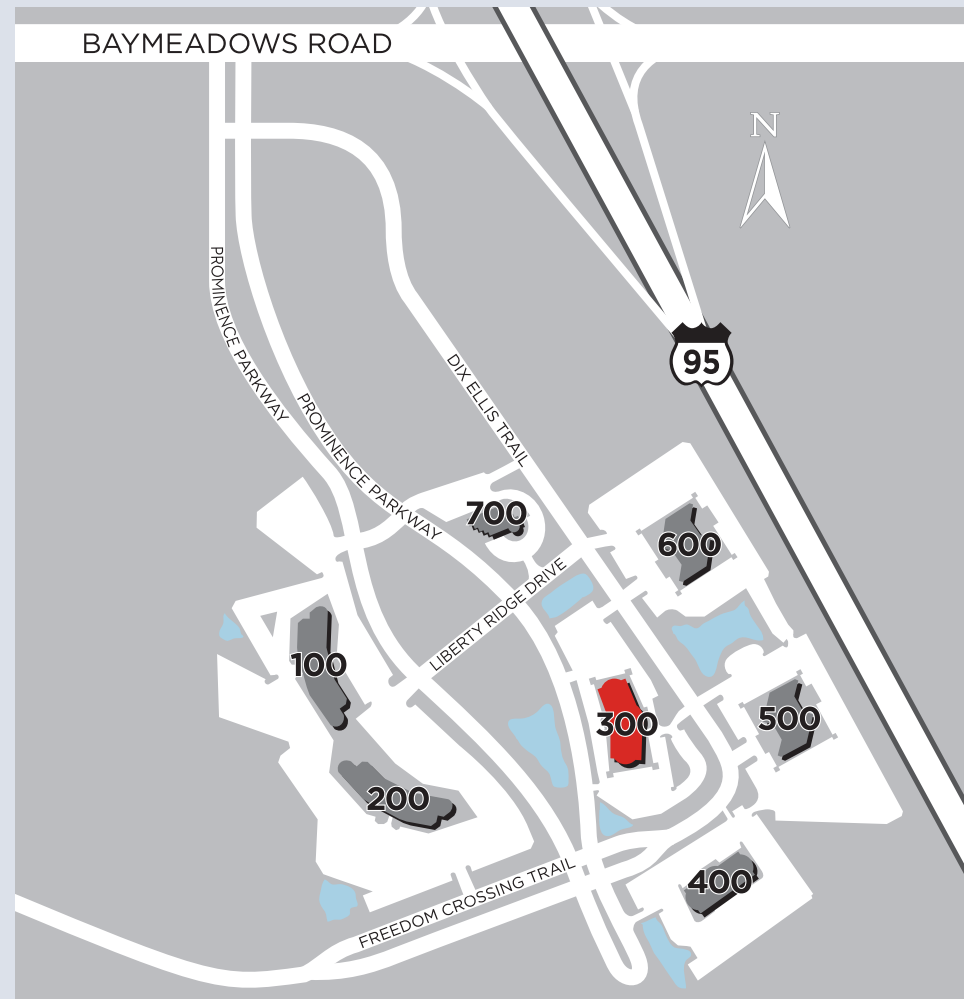




PROMINENCE 300 - 8935 PROMINENCE PKWY.



Prominence is a seven-building office park south of Baymeadows Road and adjacent to Interstate 95

# PROMINENCE JACKSONVILLE, FLORIDA

OWNED AND MANAGED BY:



FOR MORE INFORMATION, PLEASE CONTACT,

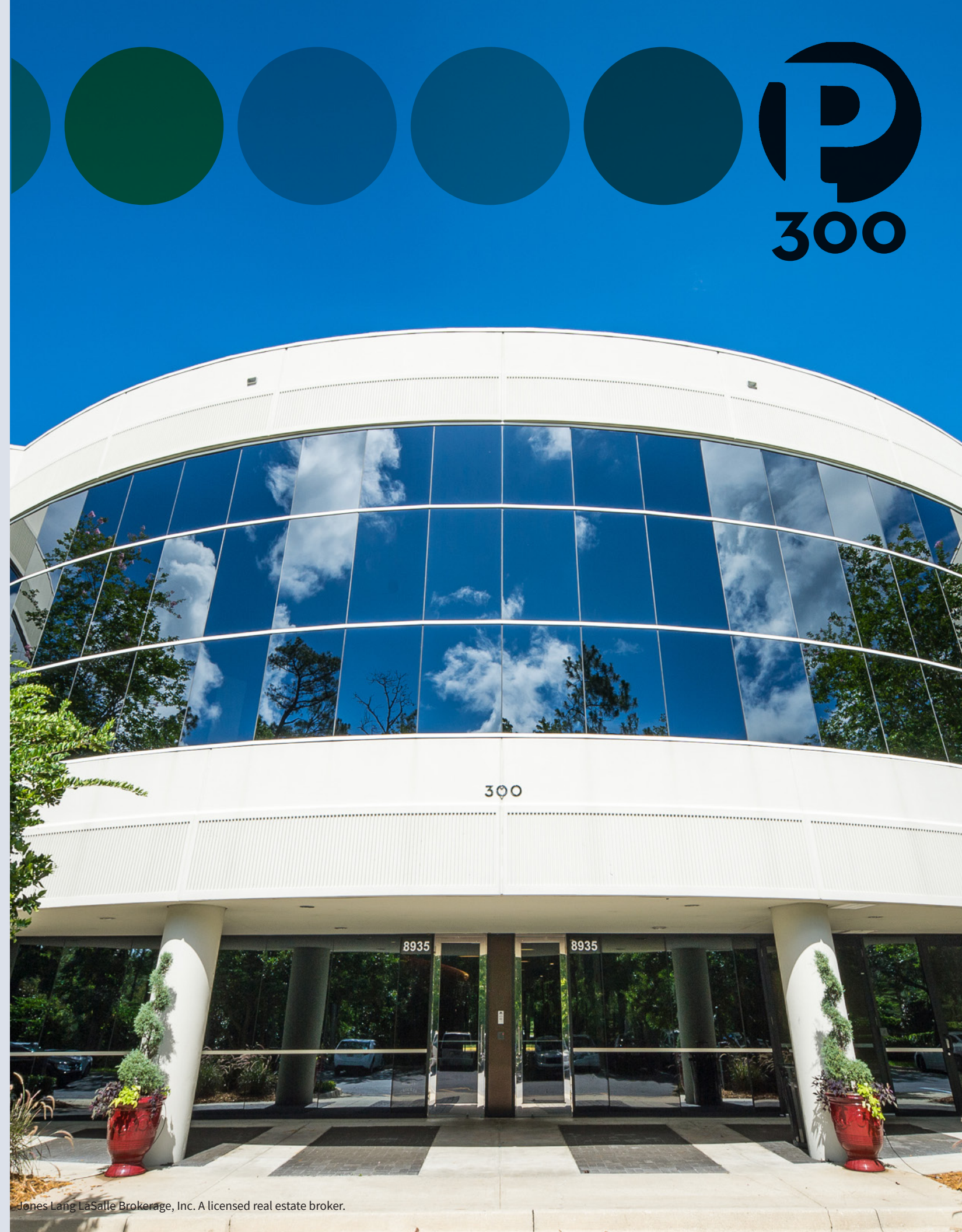


**Michael Loftin**  
Managing Director  
+1 904 559 3911  
michael.loftin@am.jll.com

**Jesse Shimp**  
Managing Director  
+1 904 559 3910  
jesse.shimp@am.jll.com

DISCLAIMER  
Jones Lang LaSalle Brokerage, Inc. A licensed real estate broker.  
Although information has been obtained from sources deemed reliable, neither Owner nor JLL makes any guarantees, warranties or representations, express or implied, as to the completeness or accuracy as to the information contained herein. Any projections, opinions, assumptions or estimates used are for example only. There may be differences between projected and actual results, and those differences may be material. The Property may be withdrawn without notice. Neither Owner nor JLL accepts any liability for any loss or damage suffered by any party resulting from reliance on this information. If the recipient of this information has signed a confidentiality agreement regarding this matter, this information is subject to the terms of that agreement. ©2021 Jones Lang LaSalle Brokerage, Inc. All rights reserved.

\*\*The outbreak of the COVID-19 virus (novel coronavirus) since the end of January 2020 has resulted in market uncertainty and volatility. While the economic impact of a contagion disease generally arises from the uncertainty and loss of consumer confidence, its impact on real estate values is unknown at this stage.



Jones Lang LaSalle Brokerage, Inc. A licensed real estate broker.

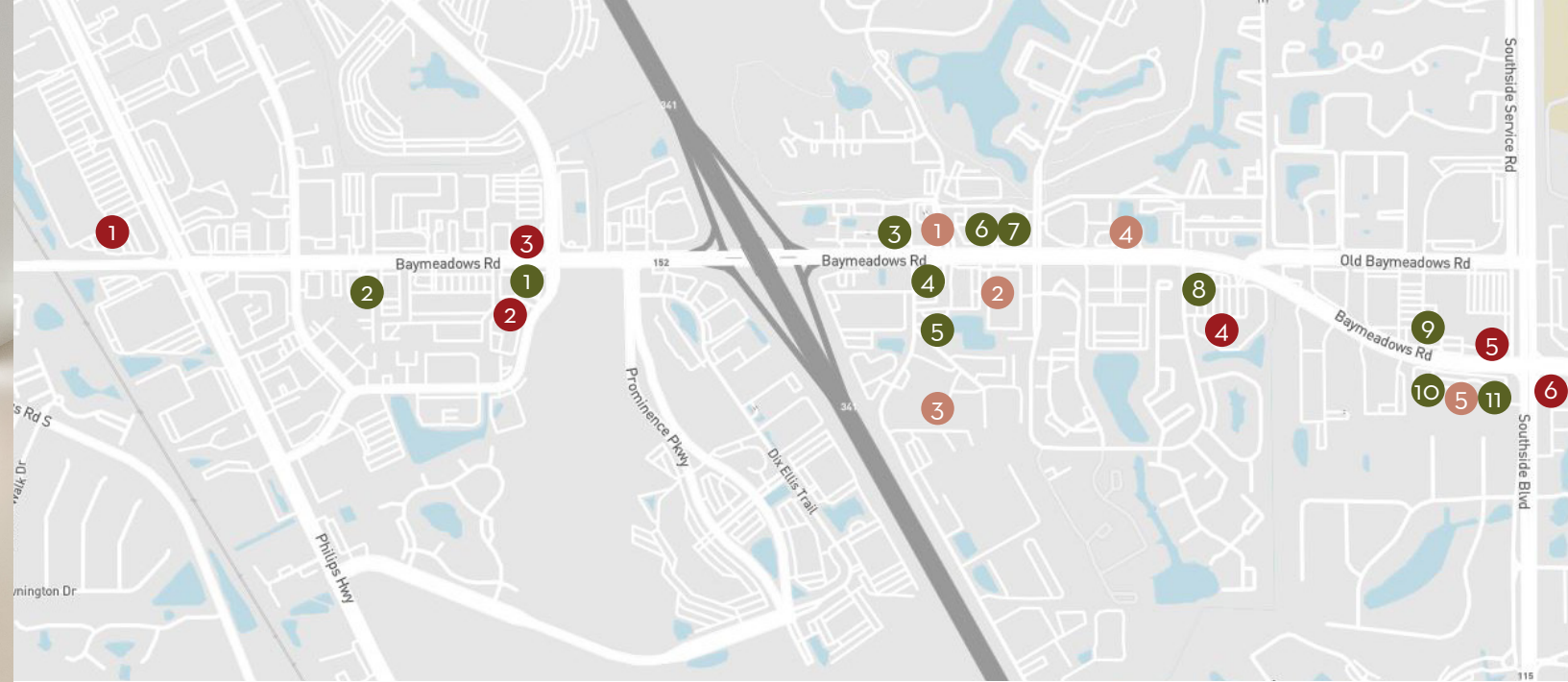




Park entrance



On-site conference center



- |                       |                               |                    |
|-----------------------|-------------------------------|--------------------|
| Dining                | Retail                        | Points of Interest |
| 1 Red Lobster         | 1 Lowes                       | 1 Bank of America  |
| 2 Dunkin'             | 2 Dollar Tree                 | 2 Embassy Suites   |
| 3 Arby's              | 3 Office Depot                | 3 Crossfit HDP     |
| 4 Hardee's            | 4 Walmart Neighborhood Market | 4 Regions Bank     |
| 5 4 Rivers Smokehouse | 5 Publix                      | 5 Baileys Gym      |
| 6 First Watch         | 6 Walgreens                   |                    |
| 7 Starbucks           |                               |                    |
| 8 Chili's             |                               |                    |
| 9 Panda Express       |                               |                    |
| 10 Metro Diner        |                               |                    |
| 11 Panera Bread       |                               |                    |

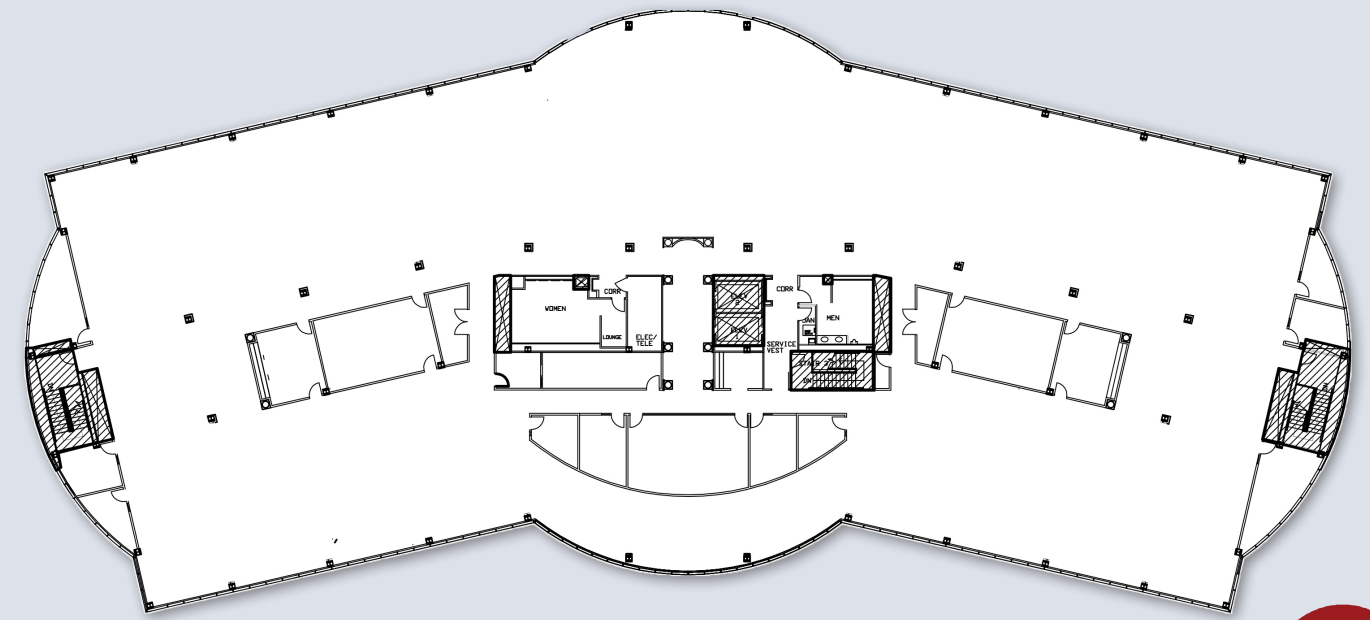
## PROPERTY LOCATION

Prominence is a seven-building office park totaling 752,000 s.f. south of Baymeadows Road and adjacent to Interstate 95. Located 10 minutes from the Central Business District, 30 minutes from the Jacksonville International Airport and 30 minutes from the Beach Communities, the property is in close proximity to numerous restaurants and stores along Baymeadows Road. The Avenues Mall is one interchange to the south.

## BUILDING FEATURES

- 46,883 r.s.f. on 2 floors
- Building signage available
- Located in a 752,000 s.f. office park
- Large efficient floor plates
- Abundant free parking
- Fiber connectivity
- On-site café and conference center
- Park-like setting with abundant landscaping
- Management office and service personnel on-site

## 8935 Prominence Pkwy. THIRD FLOOR / PROMINENCE 300



**33,088 r.s.f.**

