

# 22 WEST 48<sup>TH</sup> STREET

ROCKEFELLER CENTER | PLAZA DISTRICT



AT ROCKEFELLER PLAZA AND 48<sup>TH</sup> STREET

Former Duane Reade store #14158

### SPACE

Ground Floor	4,715 sf
Second Floor	2,050 sf
Basement	873 sf*
Total	8,638 sf

\*Non-selling

### FRONTAGE

West 48th Street	35 ft
------------------	-------

### POSSESSION

Arranged

### ASKING RENT

\$950,000 PA gross

### TERM

Through 02/28/2033

### COMMENTS

- Situated in the heart of Rockefeller Center and within walking distance to the City's top tourist attractions including St. Patrick's Cathedral, Museum of Modern Art, Times Square, Bryant Park and Central Park
- Steps to the 47-50th Streets Rockefeller Center Station servicing the subway lines with an annual ridership of 17,289,384 B D F M
- Over 470,000 weekly visitors at Rockefeller Center, nearly 800,000 during holidays

### NEIGHBORING TENANTS



### MICHAEL RILEY

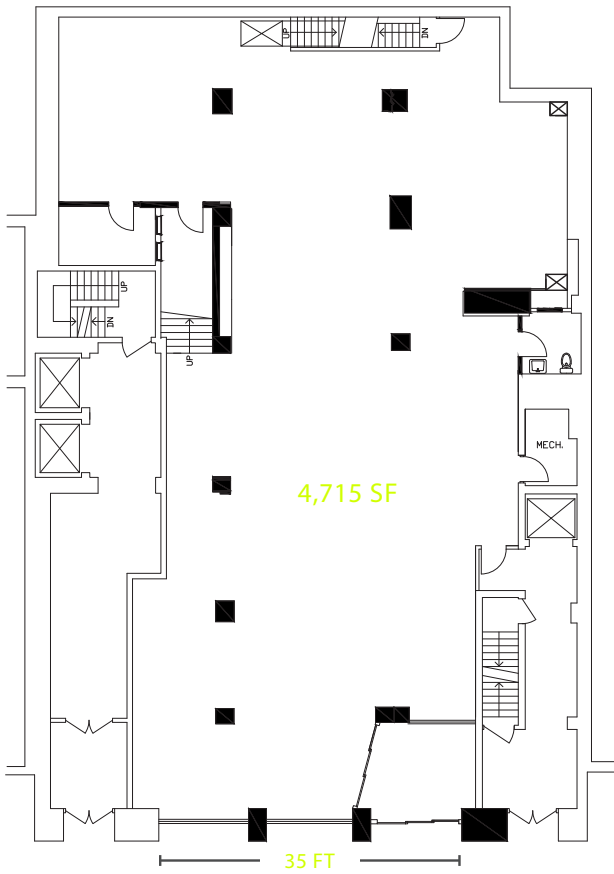
+1 212 812 5901 | michael.riley@jll.com

### PATRICK A. SMITH

+1 212 812 5888 | patricka.smith@jll.com

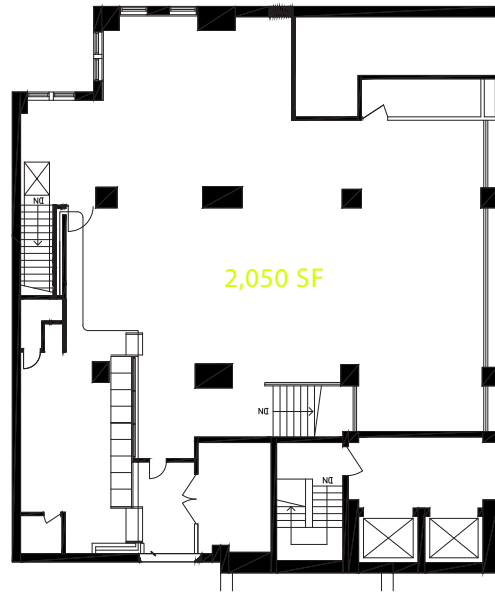


GROUND FLOOR

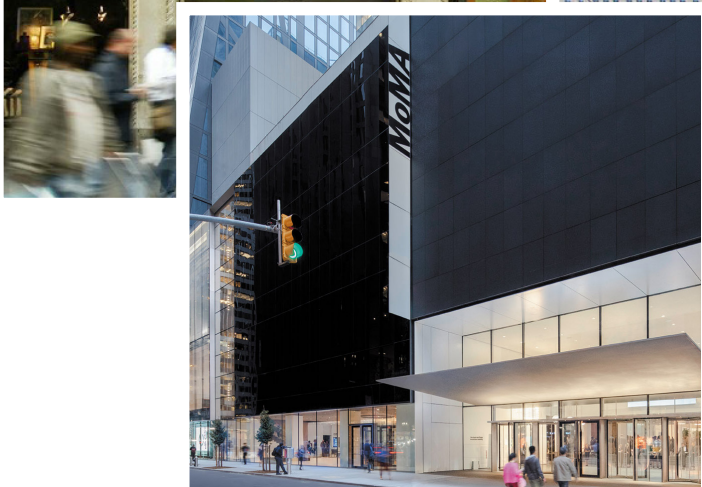
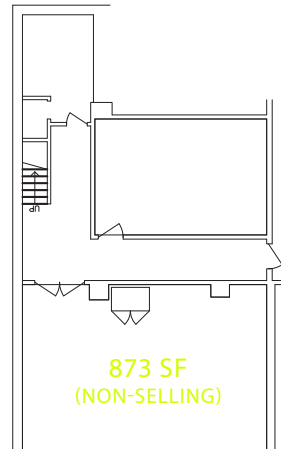


WEST 48TH STREET

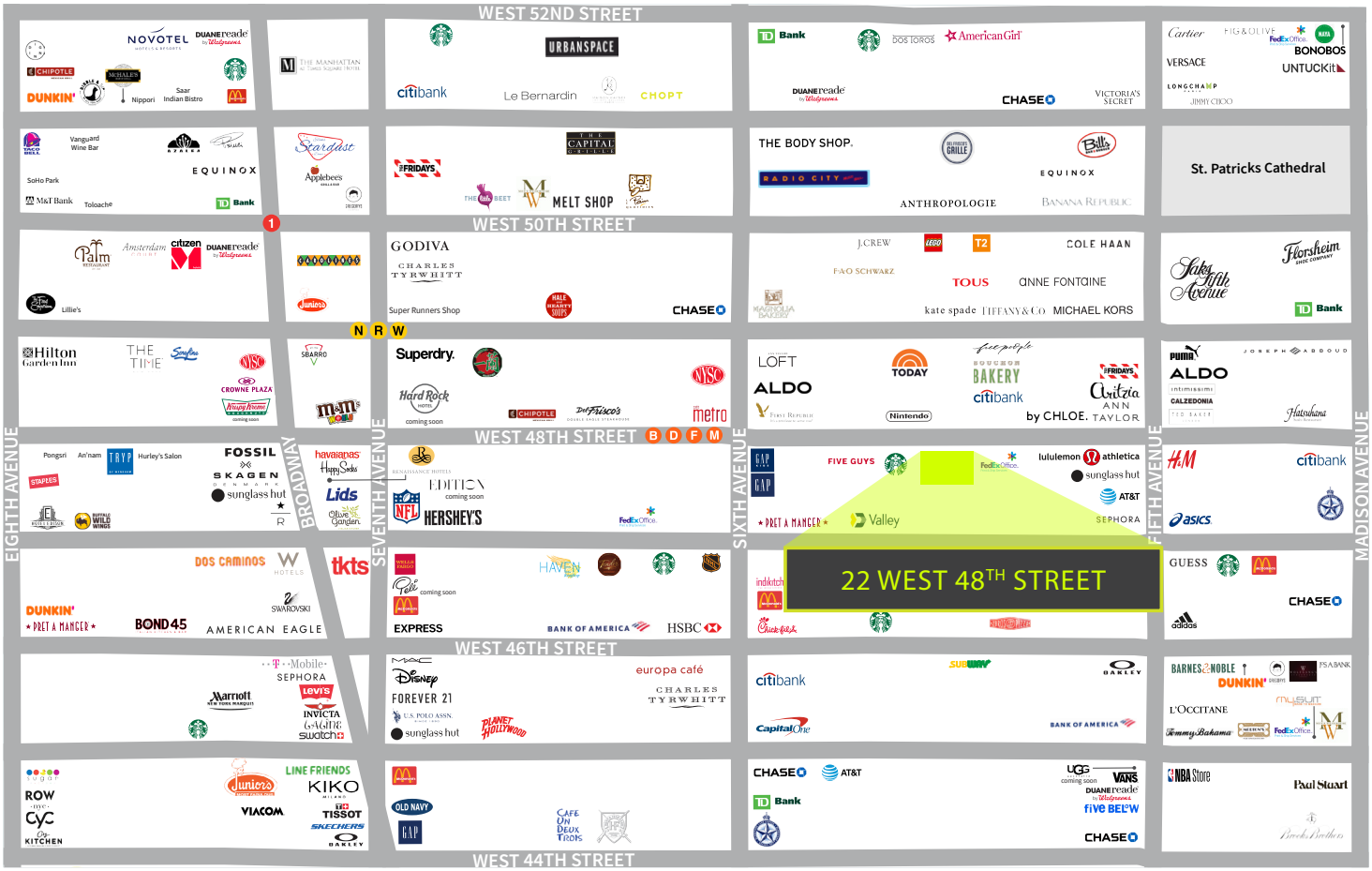
SECOND LEVEL



BASEMENT



AREA MAP



586,919

area employees

\$129,536

median income

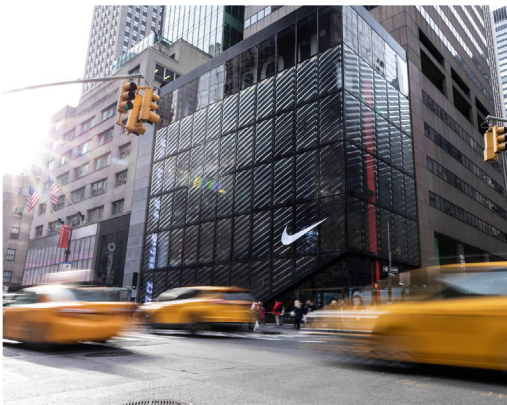
14,122

area residents

178 MIL

total office sf

\*within a 1/2 mile radius



Jones Lang LaSalle Brokerage, Inc. | 330 Madison Avenue New York, NY 10017

DISCLAIMER

Although information has been obtained from sources deemed reliable, neither Owner nor JLL makes any guarantees, warranties or representations, express or implied, as to the completeness or accuracy as to the information contained herein. Any projections, opinions, assumptions or estimates used are for example only. There may be differences between projected and actual results, and those differences may be material. The Property may be withdrawn without notice. Neither Owner nor JLL accepts any liability for any loss or damage suffered by any party resulting from reliance on this information. If the recipient of this information has signed a confidentiality agreement regarding this matter, this information is subject to the terms of that agreement. ©2020. Jones Lang LaSalle IP, Inc. All rights reserved.

