

353 SACRAMENTO

Retail Available For Lease

353 SACRAMENTO ST. SAN FRANCISCO, CA 94111

KBS



Jones Lang LaSalle Brokerage, Inc.
RE License #01856260



THE FIDI

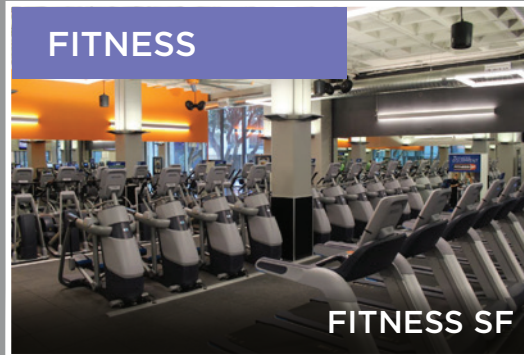
San Francisco's financial district is home to over 800 headquarters of the world's leading technology and financial companies. Approximately 49 million square feet of Class "A" office with \pm 110,000 employees provide a dense customer base for retailers in the submarket.

- Financial center for the Western United States
- New Transbay center to open in 2019
- Area is served by by multiple transportation types including BART, MUNI and buses

RESTAURANTS



FITNESS



RETAIL



THE NEIGHBORHOOD

The North Financial District is home to ± 21,690,000 square feet of Class A offices and is the headquarters for McKesson Corporation, PG&E, Charles Schwab and Gap. The submarket is bordered by San Francisco's historic Chinatown, Jackson Square, Union Square and the picturesque Embarcadero.

- Proximate to best in class food and beverage operators: Leo's Oyster Bar, Michael Mina, Pabu, Barbacco
- Located south of Jackson Square, San Francisco's newest retail high street.
- Walking distance to north beach, San Francisco's historic Italian neighborhood

THE DRIVERS

Food & Drink

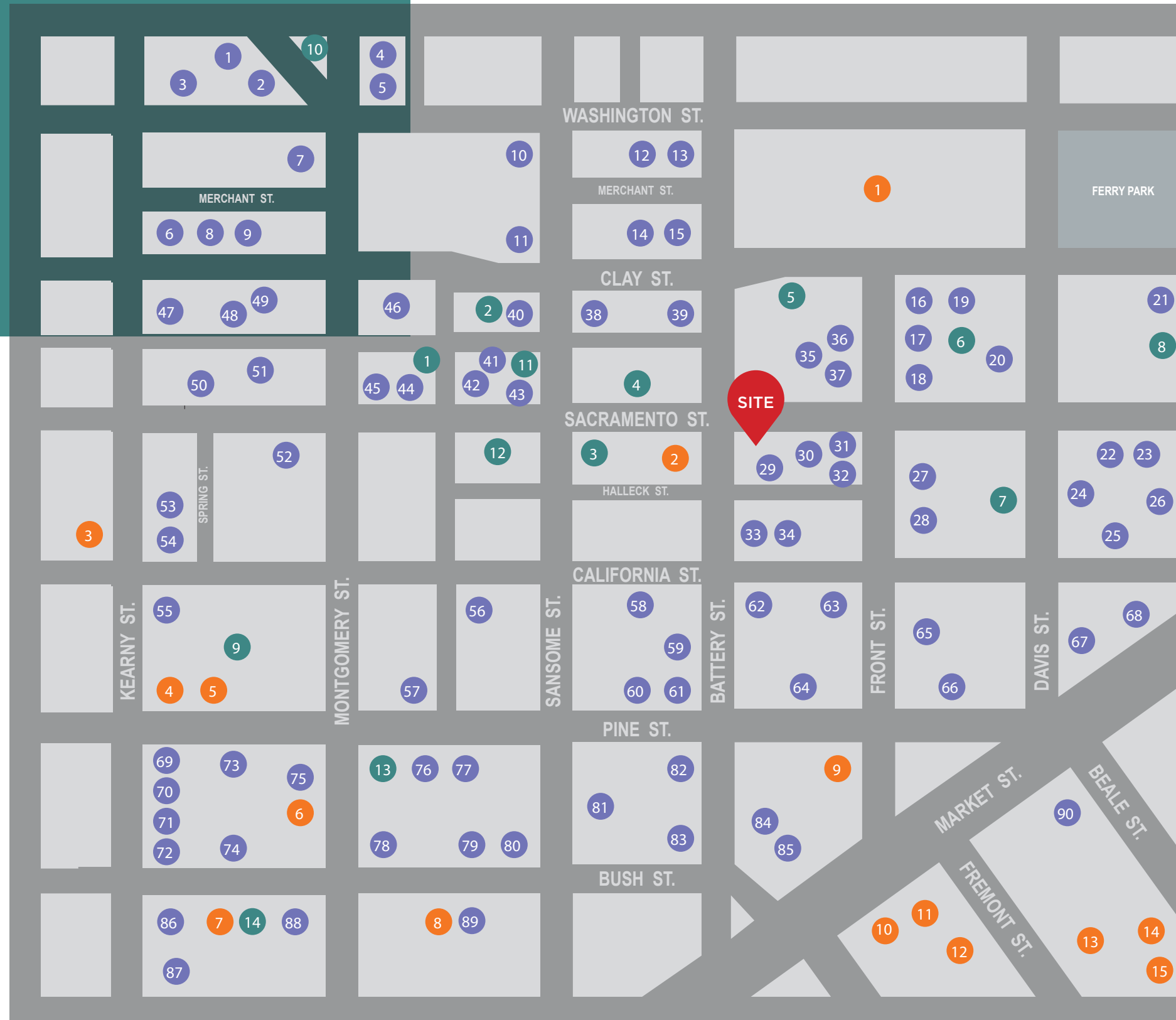
- 01 Caffe Macaroni
- 02 Trestle
- 03 Oolong Noodles
- 04 Barbarossa Lounge
- 05 Kusakabe
- 06 The Garden Restaurant
- 07 Proper Food
- 08 Joy Hing BBQ Noodle
- 09 Alfred's SF
- 10 Sai's Vietnamese
- 11 Specialty's Cafe
- 12 Cafe Prague
- 13 The Hidden Vine
- 14 Fish & Farm
- 15 Starbucks
- 16 Gochees Pizza
- 17 Peet's Coffee
- 18 Blanc Et Rouge
- 19 Anderson Bakery
- 20 Blue Hawaii Açai Cafe
- 21 Jazz in the City
- 22 Focaccia Bakery
- 23 Oasis Grill
- 24 Chipotle
- 25 Le Regency
- 26 Ziggy's Burgers
- 27 Schroeder's
- 28 Lee's Deli
- 29 Lee's Deli
- 30 The Grubbies
- 31 Royal Exchange
- 32 Harrington's Bar & Grill
- 33 Tadich Grill
- 34 Barbacco
- 35 Thrive Juicery
- 36 Gambino's New York
- 37 Subs
- 38 The Melt Embarcadero
- 39 Peet's Coffee
- 40 Park Grill Le Meridien
- 41 Mixt
- 42 The Barrel Room
- 43 Marengo on the Alley
- 44 Morning Brew
- 45 Wayfare Tavern
- 46 Leo's Oyster Bar
- 47 Latte Express
- 48 City View
- 49 Munchbox
- 50 Mercedes Restaurant
- 51 Tokyo Express
- 52 Crown & Acre
- 53 Starbucks
- 54 San Francisco Soup Co.
- 55 Batter Bakery
- 56 Cafe Venue
- 57 Diller's
- 58 San Francisco Soup Co.
- 59 Illy's Caffe
- 60 Good Eats Cafe
- 61 Subway
- 62 Starbucks
- 63 Andersen Bread
- 64 Jimmy John's
- 65 The Ramen Bar
- 66 Yoppi Yogurt
- 67 Eatsa
- 68 Peet's Coffee
- 69 Ramen Underground
- 70 Super Duper Burgers
- 71 L&L Hawaiian BBQ
- 72 Pho Express
- 73 La Fusion
- 74 Sam's Grill & Seafood
- 75 Lee's Deli
- 76 Specialty's Cafe
- 77 Juice Shop
- 78 Cafe Venue
- 79 Freshroll
- 80 Blue Bottle Coffee
- 81 Mixt
- 82 Tokyo Express
- 83 Noah's Bagels
- 84 Jamba Juice
- 85 Specialty's Cafe
- 86 Starbucks
- 87 Sushirrito
- 88 Escape from NY Pizza
- 89 Coffee Cultures
- 90 Noodle Me

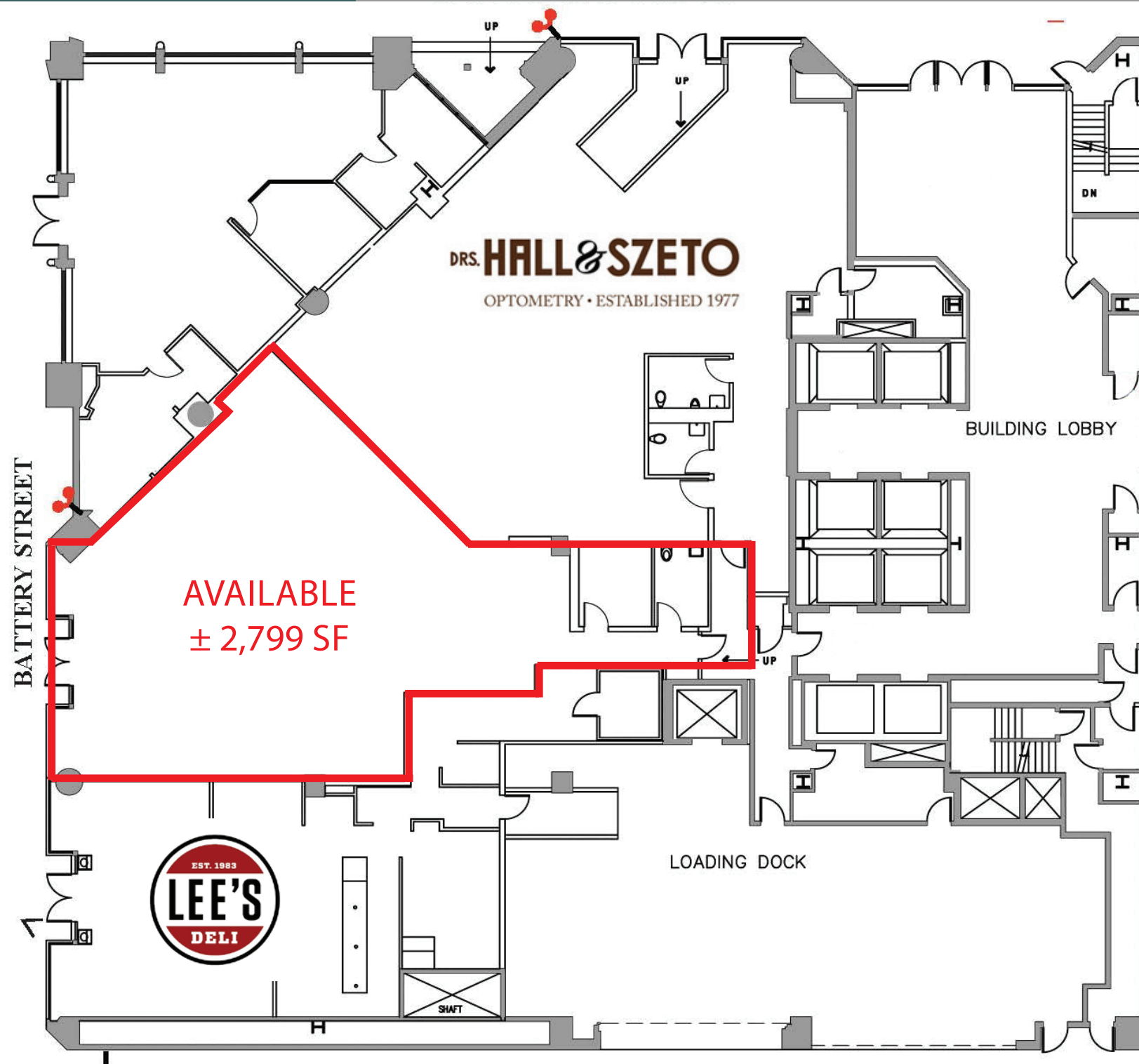
Office HQs

- 01 Farallon Capital Mgmt.
- 02 Gordon Rees Scully Man.
- 03 Federal Home Loan Bank
- 04 Dodge & Cox Funds
- 05 KKR Financial Holdings
- 06 Farella Braun + Martel
- 07 Sedgwick
- 08 Lithium Technology
- 09 First Republic Bank
- 10 Hanson Bridgett
- 11 Morrison & Foerster
- 12 Xoom Corporation
- 13 CA Dept. of Insurance
- 14 Bechtel Group
- 15 Blue Shield of CA

Fitness

- 01 Pilates ProWorks SF
- 02 Yoga Journal
- 03 Planet Fitness
- 04 Infinite Fitness
- 05 Wheel House
- 06 Fitness SF Embarcadero
- 07 24 Hour Fitness
- 08 Bar Method
- 09 Bay Club Financial Dist.
- 10 BodyFi
- 11 Moksha Life Center
- 12 Orange Theory Fitness
- 13 Flagship CrossFit
- 14 Barry's Bootcamp



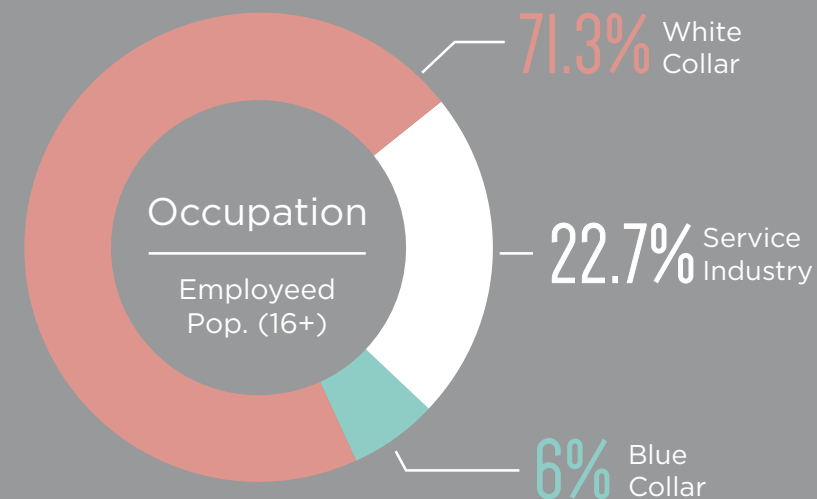


THE SPACE


353 Sacramento Street is located at the corner of Sacramento and Battery, one of the North Financial District's most trafficked intersection. This highly visible retail opportunity is a short walk to public transit, and easily accessible to the ± 200,000 employees within a 10 minute walk.

- Type one venting available
- High ceilings
- Excellent signage potential
- Floor to ceiling glass
- Highly trafficked pedestrian street
- Great natural light
- Ideal square footage for fast casual operator

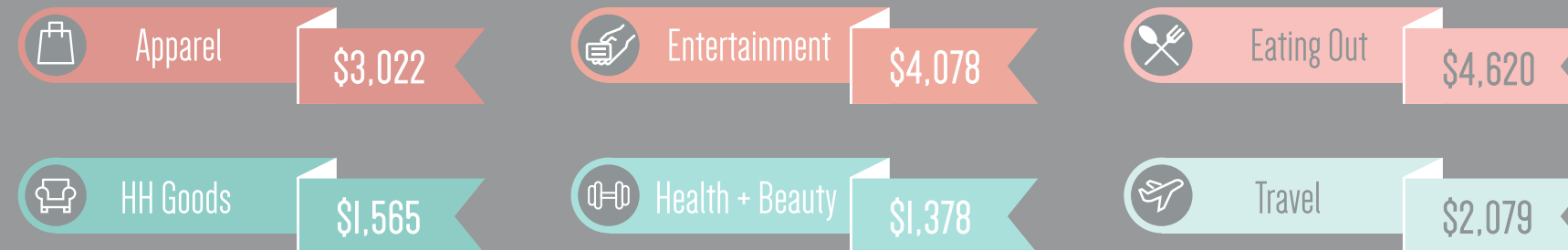
The Numbers



 **42,865**
Total Population

 **282,892**
Daytime Population

Average Annual Spending



* Information from ESRI 2017



Ben Lazzareschi
Executive Vice President
+1 415 228 3070
ben.lazzareschi@am.jll.com
RE License #01414579

Laura Tinetti
Senior Vice President
+1 415 228 3072
laura.tinetti@am.jll.com
RE License #01358500

David Kessler
Associate
+1 925 478 0386
david.kessler@am.jll.com
RE License #02112097

KBS

