



9000 State Road

Philadelphia, PA 19136

*Great opportunity for
quick start up of
manufacturing
operations for Pharma
and Biotech*



FOR SALE: 31,000 SF – 3.5 Acres

- Former R&D, OSD and Capsulation manufacturing facility
- Controlled substance environment
- Currently DEA approved; previously FDA approved
- All existing infrastructure is in place, including:
 - 2 WIP vaults, DEA caging and security cameras
 - USP water system
- Current equipment onsite: Collette GRAL 150 High Shear Mixer and a Gruenberg SPX Dryer Oven

[Click here to request full detailed brochure](#)



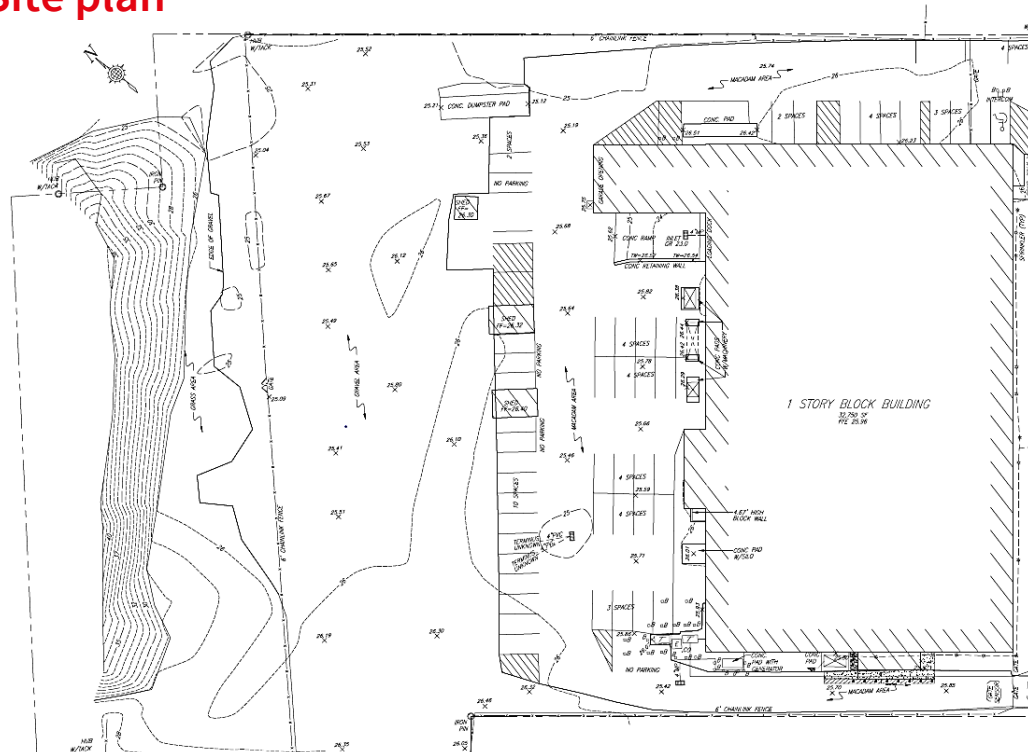
9000 State Road

Philadelphia, PA 19136

Floor plan



Site plan





9000 State Road

Philadelphia, PA 19136

Convenient access

- Quick, easy access to I-95
- Convenient to I-295
- 34 miles to Princeton, NJ
- 9 miles to Bristol, PA



John Leubecker
Executive Vice President
+1 215 988 5529
john.leubecker@am.jll.com

Peter Ladas
Executive Vice President
+1 732 590 4163
peter.ladas@am.jll.com

Jones Lang LaSalle Brokerage, Inc.
1650 Arch Street, Suite 2500
Philadelphia, PA 19103
+1 215 988 5500



Although information has been obtained from sources deemed reliable, neither Owner nor JLL makes any guarantees, warranties or representations, express or implied, as to the completeness or accuracy as to the information contained herein. Any projections, opinions, assumptions or estimates used are for example only. There may be differences between projected and actual results, and those differences may be material. The Property may be withdrawn without notice. Neither Owner nor JLL accepts any liability for any loss or damage suffered by any party resulting from reliance on this information. If the recipient of this information has signed a confidentiality agreement regarding this matter, this information is subject to the terms of that agreement. ©2022. Jones Lang LaSalle IP, Inc. All rights reserved.