



For Lease

Cronridge Corporate Center

11500 Cronridge Drive | Owings Mills, MD

- Rental rate: \$13.00/psf NNN
- Suite 100-108 | 13,107 s.f. (available now)
- Pristine HQ space featuring offices on glass line
- End unit with ample parking
- An abundance of dining, retail and entertainment options nearby located at the Owings Mills Town Center
- Centrally located to the Baltimore Beltway – 695 and BWI Airport

For more information, contact: _____

Rob Freedman

Managing Director

+1 410 952 9444

rob.freedman@jll.com

Dominic Digiovannantonio

Vice President

+1 301 752 6799

dom.digi@jll.com

Gary Applestein

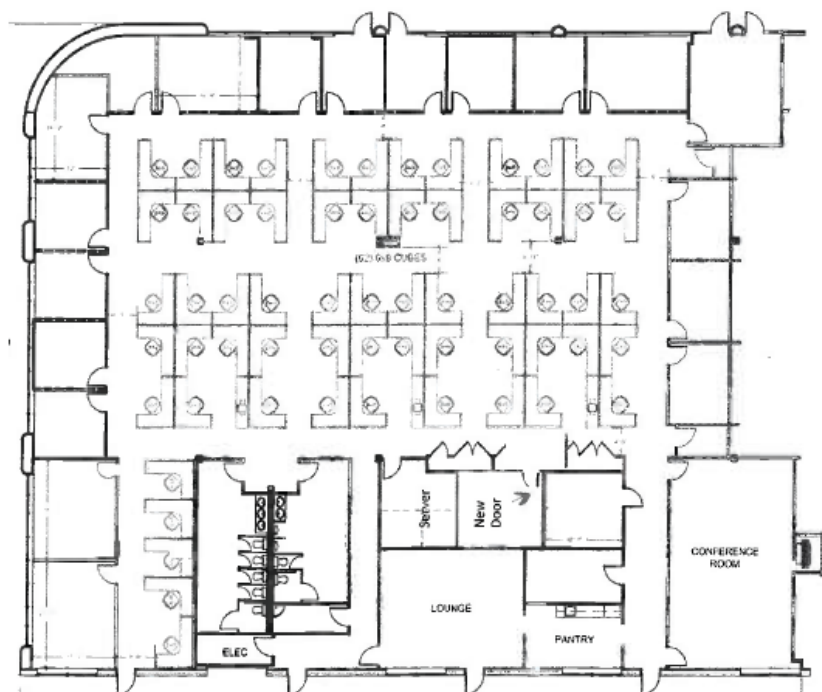
Managing Director

+1 410 404 3196

gary.applestein@jll.com



Floor Plan: 13,107 SF | Suite 100-108



Although information has been obtained from sources deemed reliable, neither Owner nor JLL makes any guarantees, warranties or representations, express or implied, as to the completeness or accuracy as to the information contained herein. Any projections, opinions, assumptions or estimates used are for example only. There may be differences between projected and actual results, and those differences may be material. The Property may be withdrawn without notice. Neither Owner nor JLL accepts any liability for any loss or damage suffered by any party resulting from reliance on this information. If the recipient of this information has signed a confidentiality agreement regarding this matter, this information is subject to the terms of that agreement. ©2023 Jones Lang LaSalle IP, Inc. All rights reserved.

