



Sandy Crossing

19730 NE Sandy Blvd

Office/Showroom – 25,740 SF

Sandy Crossing is located in Portland's premier distribution submarket with excellent access to major arterials including I-84, NE Airport Way and NE Marine Drive.

- Open floor plan with exposed 14' ceiling
- Excellent visibility along NE Sandy Blvd
- 11,500 daily traffic count
- Dedicated off-street parking

A Dermody Properties Project represented by:

Tyler Sheils, SIOR

+1 503 972 8603

tyler.sheils@am.jll.com

Licensed in OR

Kevin Kriesien

+1 503 972 8613

kevin.kriesien@am.jll.com

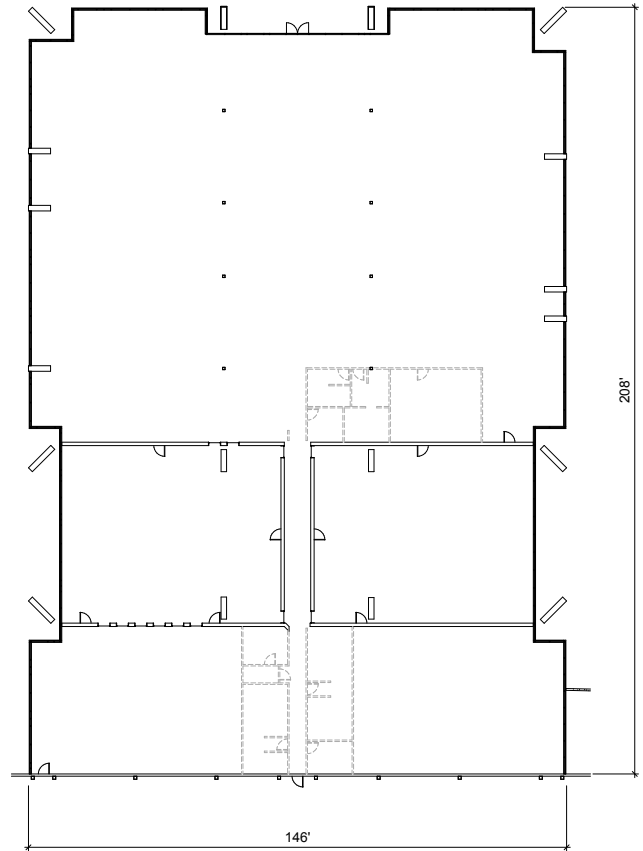
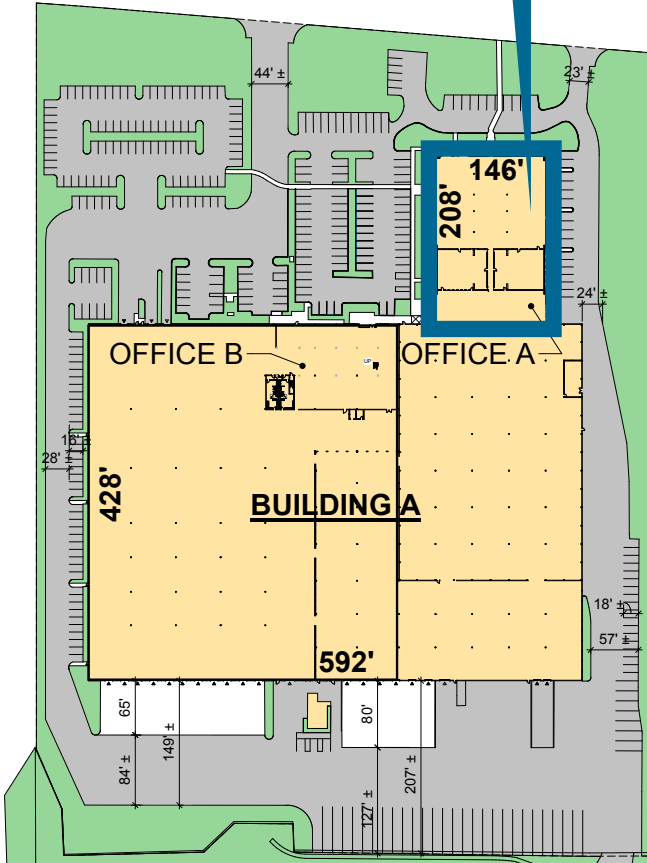
Licensed in OR & WA



Site Plan

Floor Plan

Office Area: 25,740 SF



OFFICE A PLAN

A Dermody Properties Project represented by:

Tyler Sheils, SIOR

+1 503 972 8603

tyler.sheils@am.jll.com

Licensed in OR

Kevin Kriesien

+1 503 972 8613

kevin.kriesien@am.jll.com

Licensed in OR & WA

Jones Lang LaSalle Brokerage, Inc.

©2019 Jones Lang LaSalle IP, Inc. All rights reserved. All information contained herein is from sources deemed reliable; however, no representation or warranty is made to the accuracy thereof.

