

BAILEY BUILDING BIDDLE BUILDING

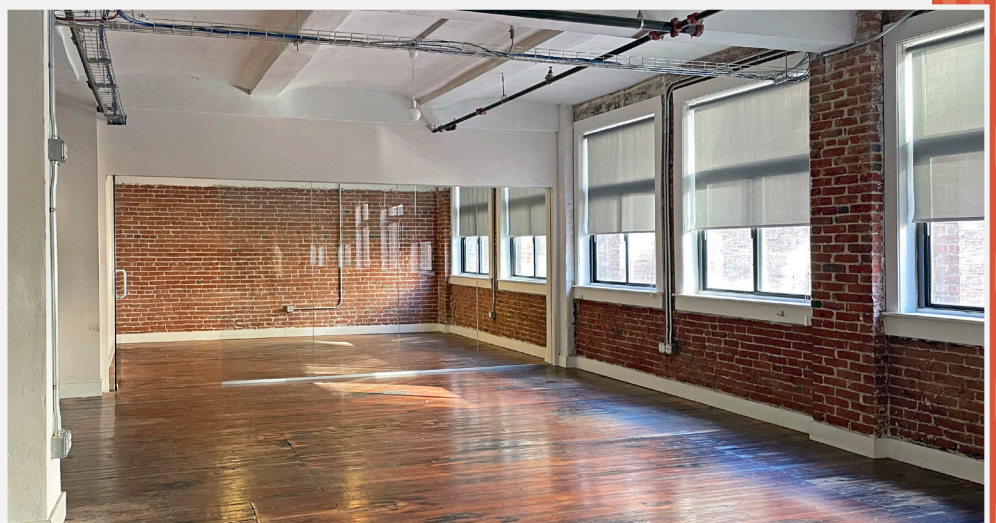
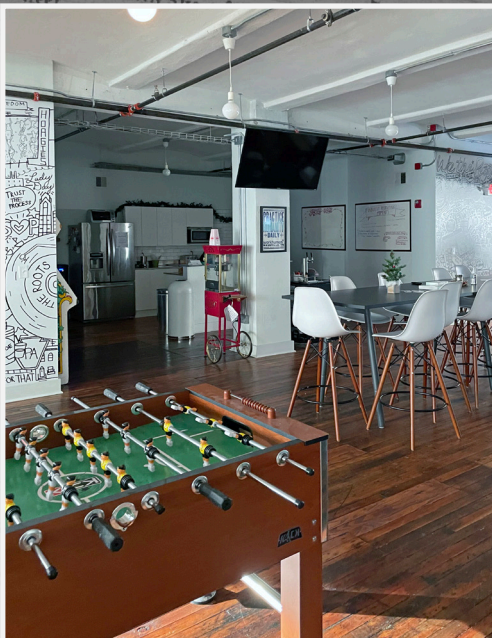
**1218 CHESTNUT STREET
& 1217 SANSOM STREET
PHILADELPHIA, PA**

**5,600 SF & 2,800 SF
SPACES AVAILABLE**

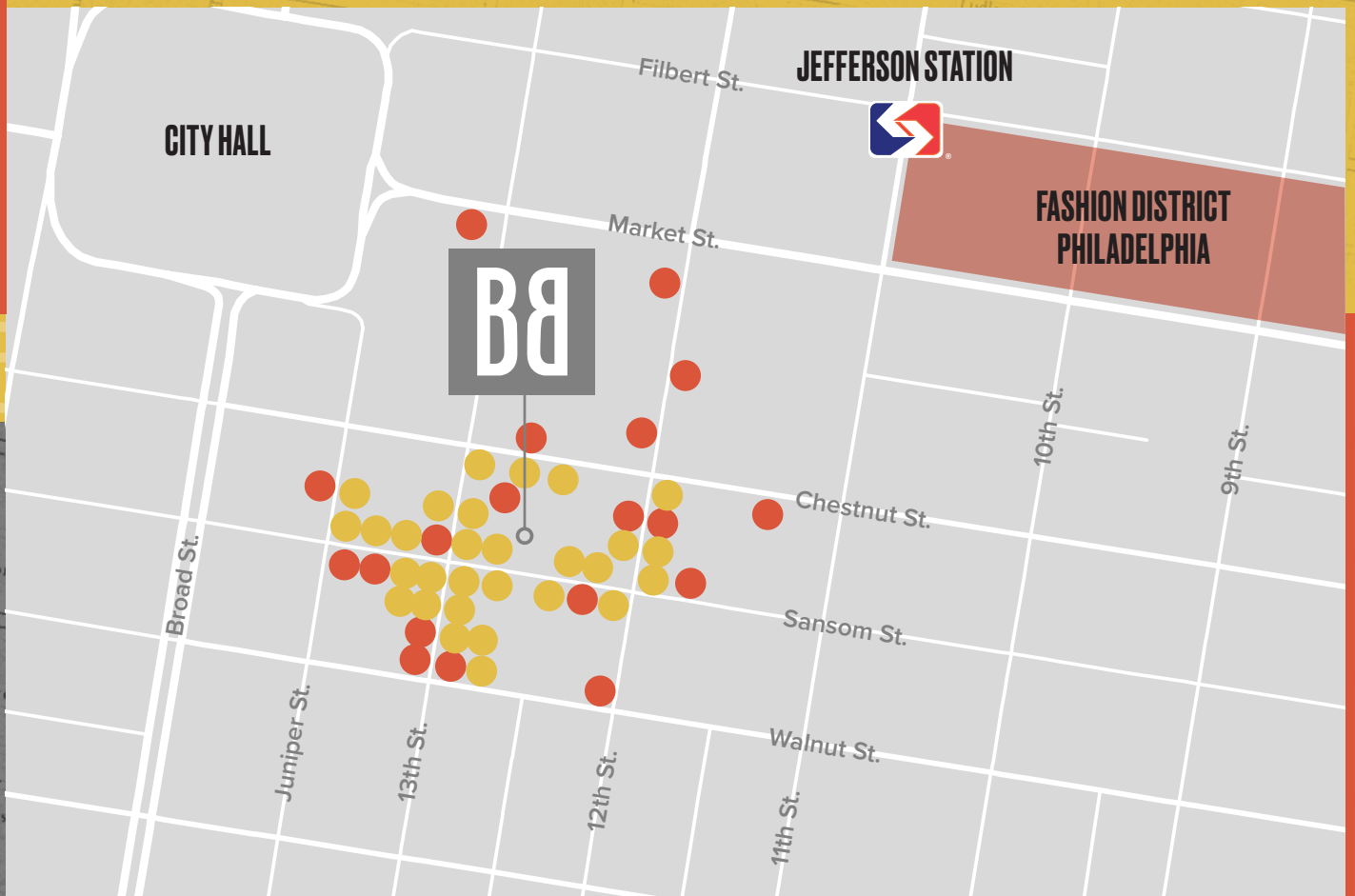
CREATIVE SPACES FOR CREATIVE MINDS AT THE BAILEY & BIDDLE BUILDINGS.

Work in a space that is as inspiring as it is comfortable, and leave the corporate cubicles behind. Located in the active and vibrant Midtown Village-Market East neighborhood with 5,600 SF & 2,800 SF availabilities of industrial loft-style space, the Bailey & Biddle buildings offer a modern, creative and collaborative environment unlike anything else in Philadelphia.

- » Fully equipped, creative tech space with thoughtful architectural design
- » Modern industrial aesthetic with exposed brick
- » Full floor opportunities
- » Ideal HQ location for small to medium-sized company
- » Interactive, smart security system by ButterflyMX; smart controls for air/heat by Nest
- » Less than 10-minute walk from Jefferson Station
- » Neighborhood under rapid revitalization by Jefferson's \$750M investment



NEARBY AMENITIES



EAT AND DRINK

- » Van Leeuwen Ice Cream
- » Zio's Brick Oven Pizza
- » Barbuzzo
- » Leda & The Swan
- » Spice 28
- » Sugar Factory
- » El Vez
- » Charlie Was a sSinner
- » Fergie's Pub

- » Finn Mccools Ale House
- » Tinsel
- » DaMò Pasta Lab
- » Hatch & Coop
- » Shake Shack
- » McGillin's Olde Ale House
- » Time
- » Double Knot
- » Sampan
- » FUEL Healthy Kitchen

- » Chatayee Thai
- » Insomnia Cookies
- » Graffiti Bar
- » 1225Raw Sushi and Sake Lounge
- » Drury Beer Garden at Opa
- » BAR
- » Alpen Rose
- » Vintage
- » Sueño
- » Cogito Coffee

SHOPPING AND AMENITIES

- » Eviana Life
- » Modern Eye
- » Edible Arrangements
- » CVS
- » Philadelphia Club
- » Holiday Inn Express Philadelphia-Midtown, an IHG Hotel

- » Quaker City Mercantile
- » The UPS Store
- » Planet Fitness
- » Go Popcorn
- » Target
- » Fine Wine & Good Spirits Premium
- » Paper on Pine
- » Patriot Parking
- » 7-Eleven
- » Lucky Strike Philadelphia

- » Canopy by Hilton Philadelphia Center City
- » Loews Philadelphia Hotel
- » Fashion District Philadelphia
- » Macy's

FOR LEASING INFORMATION, CONTACT:

Eric Berkowitz
+1 610 416 2226
eric.berkowitz@jll.com

Alex Breitmayer
+1 215 399 1813
alex.breitmayer@jll.com

JLL | Jones Lang LaSalle Brokerage, Inc.
1650 Arch Street, Suite 2500
Philadelphia, PA 19103
+1 215 988 5500

Although information has been obtained from sources deemed reliable, neither Owner nor JLL makes any guarantees, warranties or representations, express or implied, as to the complete-ness or accuracy as to the information contained herein. Any projections, opinions, assumptions or estimates used are for example only. There may be differences between projected and actual results, and those differences may be material. The Property may be withdrawn without notice. Neither Owner nor JLL accepts any liability for any loss or damage suffered by any party resulting from reliance on this information. If the recipient of this information has signed a confidentiality agreement regarding this matter, this information is subject to the terms of that agreement. ©2023. Jones Lang LaSalle IP, Inc. All rights reserved.

