

8 6 4 1
Wilshire Boulevard

Beverly Hills Medical Space



For Leasing Information Contact:



Micheal Geller
micheal.geller@am.jll.com
License #00800010
+1 310 486 1976

Ben Silver
ben.silver@am.jll.com
License #01818061
+1 310 883 4311

Jones Lang LaSalle Brokerage, Inc., Real estate license #01856260

Available:

Suite 220 - 2,058 rsf - Medical space with reception and waiting area, nurses station, 9 exam rooms, break room and storage area.

Rental Rate:

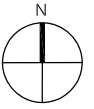
\$5.75/sf/mo/fsg

Term:

5-10 years

Parking:

Ratio of 3.00/1,000 SF. Covered Spaces at \$300/mo. Reserved & \$180/mo. Unreserved. On-site visitor parking is \$2.00 per every 15 minutes, with a \$20.00 per day maximum.

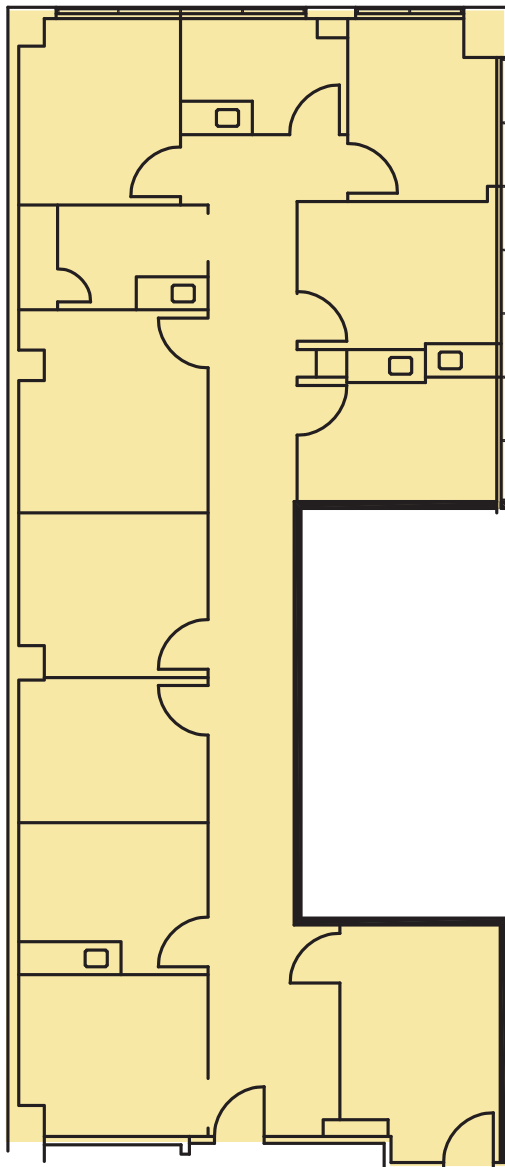


Availability

Suite 220 - 2,058 RSF:

Medical space with reception and waiting area, nurses station, 9 exam rooms, break room and storage area.

Suite 220: 2,058 rsf





Building Description

This 3-story granite clad medical office project was constructed in 1987 and was recently renovated with new elevator cabs and common area finishes. The Class A medical office building totals 52,935 SF. The property features an on-site pharmacy, City National Bank and a public bus service access.

Location

Wilshire-Carson Medical Building is located on the northwest corner of Carson Drive and Wilshire Boulevard in Beverly Hills, California. It is in close proximity to Cedars Sinai Hospital.

