



New to Market: ±610-12,002 SF Available

Welcome to Sunset Media Center, Hollywood's most innovative vertical office campus. Having undergone an extensive multi-million dollar transformation spearheaded by West Coast-based owner/operator Kilroy Realty, SMC offers redefined common areas, a sun-drenched outdoor plaza, and ample creative spaces throughout the property.

Sunset Media Center is home to the best that Hollywood has to offer. Premier on-site amenities include The Waffle restaurant and The Well cocktail bar, as well as an array of culinary options available within walking distance, such as sweetgreen, SUGARFISH by sushi nozawa, and Rubies + Diamonds. Join the growing collective of Hollywood's elite who call SMC home, including OpenTable, Slickdeals, the Hollywood Chamber of Commerce, and Film LA.



WALK

Walking distance to the Metro Red Line, Trader Joe's, Equinox and all that Hollywood has to offer



OPTIONS



Flexible options:
±610-12,002 SF of contiguous space available



CONNECT

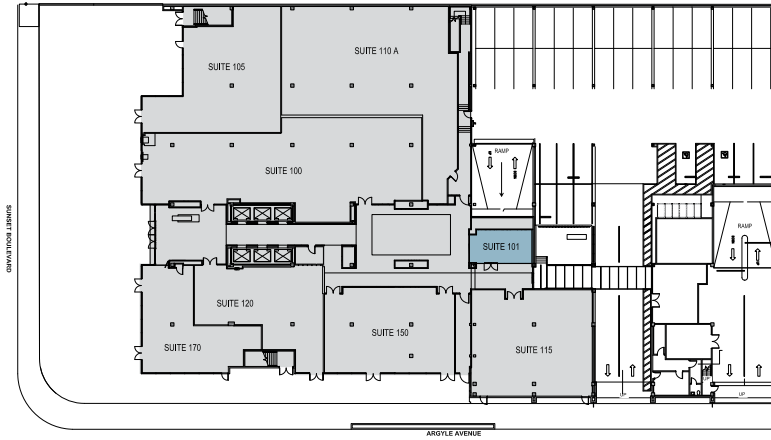
Wi-Fi available in the Living Room—the building's well-appointed common space

Available Space

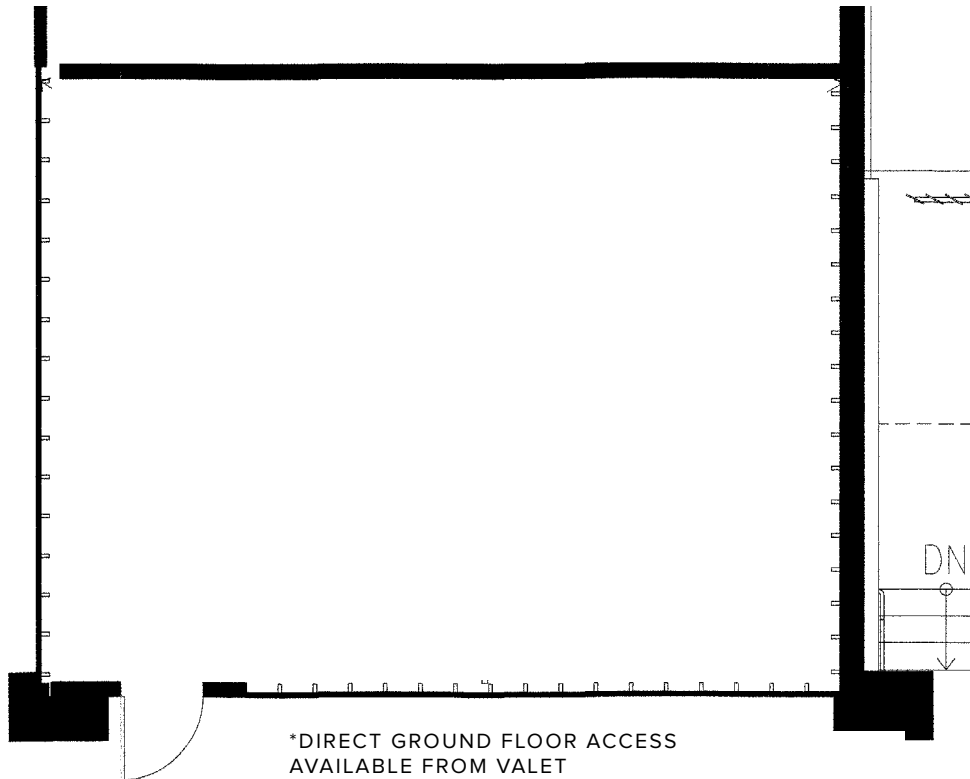
6255 SUNSET BLVD,					
<u>101</u>	±610 RSF	\$5.50	Now	Move-in Ready	
<u>705</u>	±1,306 RSF	\$5.50	Now	Move-in Ready	
<u>711</u>	±1,779 RSF	\$5.50	Coming Soon	Move-in Ready / Creative	
<u>850*</u>	±4,854 RSF	\$5.50	Now	Move-in Ready / Creative	
<u>860*</u>	±2,525 RSF	\$5.50	Now	Move-in Ready / Creative	
<i>*Suites 850 and 860 are contiguous for ±7,349 RSF</i>					
<u>920</u>	±2,233 RSF	\$5.50	Coming Soon	Move-in Ready / 2nd Gen	
<u>1111</u>	±5,175 RSF	\$5.50	Now	Move-in Ready / Creative	
<u>1501*</u>	±848 RSF	\$5.50	Now	Shell / Creative	
<u>1515*</u>	±5,788 RSF	\$5.50	Now	Shell / Creative	
<i>*Suites 1501 and 1515 are contiguous for ±6,636 RSF</i>					
<u>1525</u>	±953 RSF	\$5.50	Now	Move-in Ready / Creative	
<u>2200*</u>	±9,086 RSF	\$5.85	Coming Soon	Move-in Ready / 2nd Gen	
<u>2250*</u>	±2,916 RSF	\$5.85	Coming Soon	Move-in Ready / 2nd Gen	

**Suites 2200 and 2250 are contiguous for ±12,002 RSF*

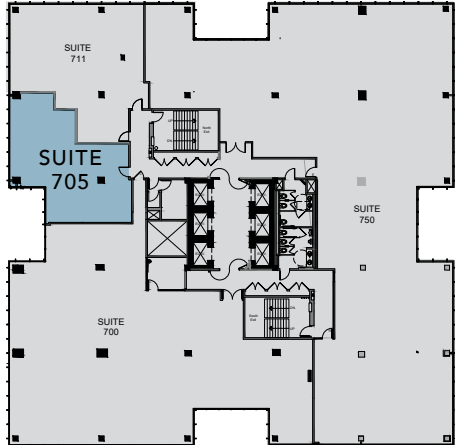
Suite 101



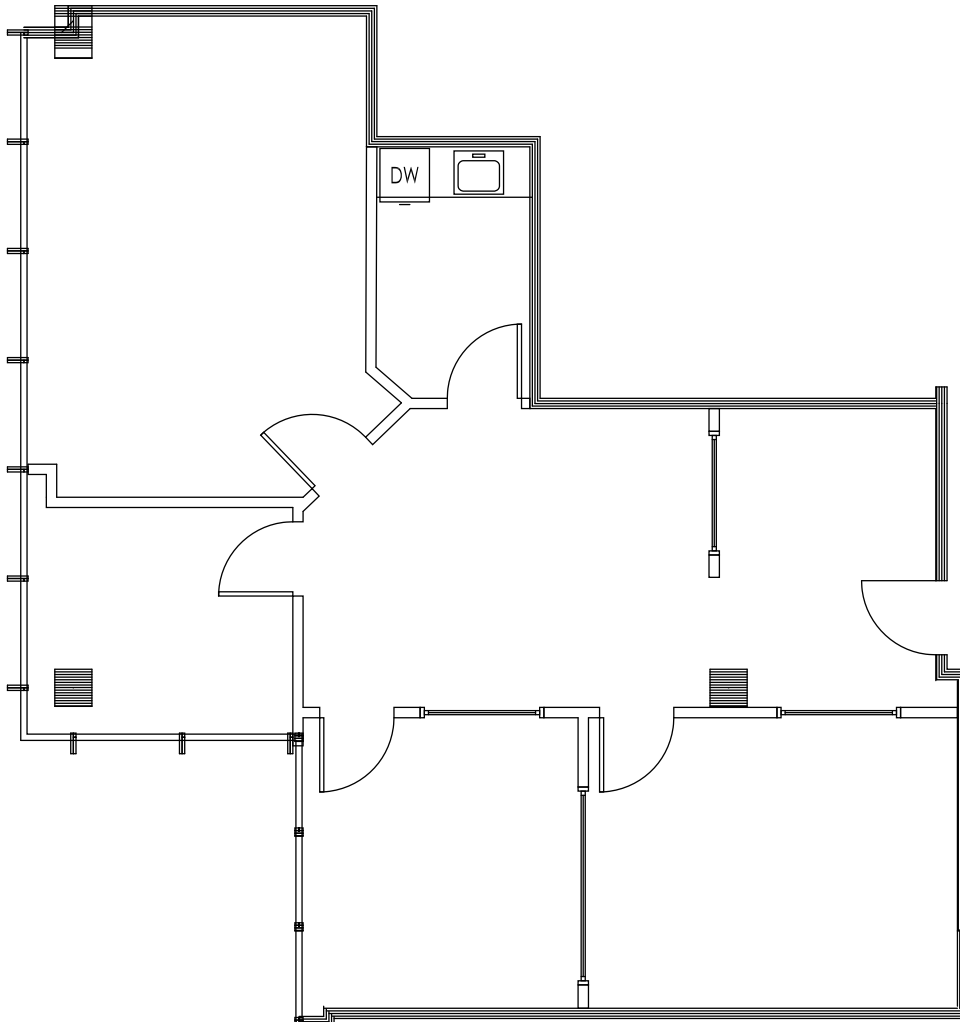
RSF - TOTAL	±610 RSF
RENT	\$5.50/SF FSG
CEILING HEIGHT	7'8"-11'1"
OCCUPANCY	COMING SOON
CONDITION	MOVE-IN READY



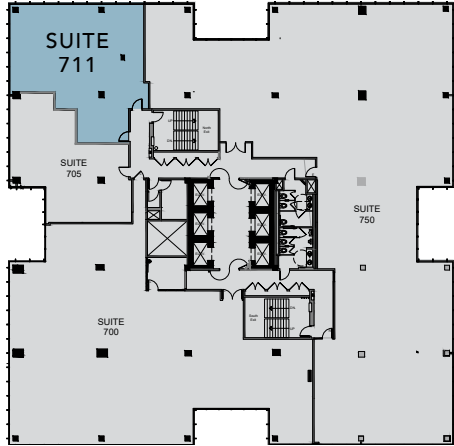
Suite 705



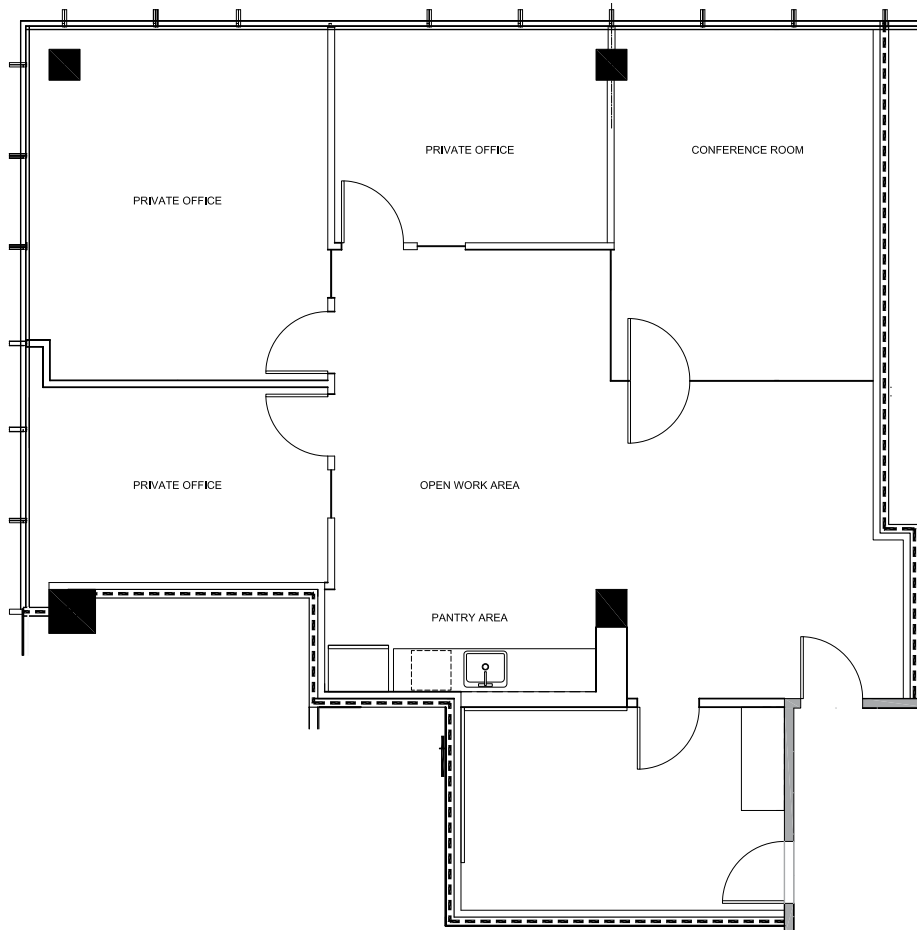
RSF - TOTAL	±1,306 RSF
RENT	\$5.50/SF FSG
CEILING HEIGHT	11'10" TO CEILING
OCCUPANCY	COMING SOON
CONDITION	MOVE-IN READY



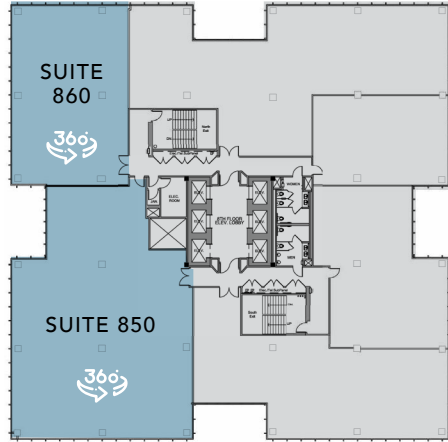
Suite 711



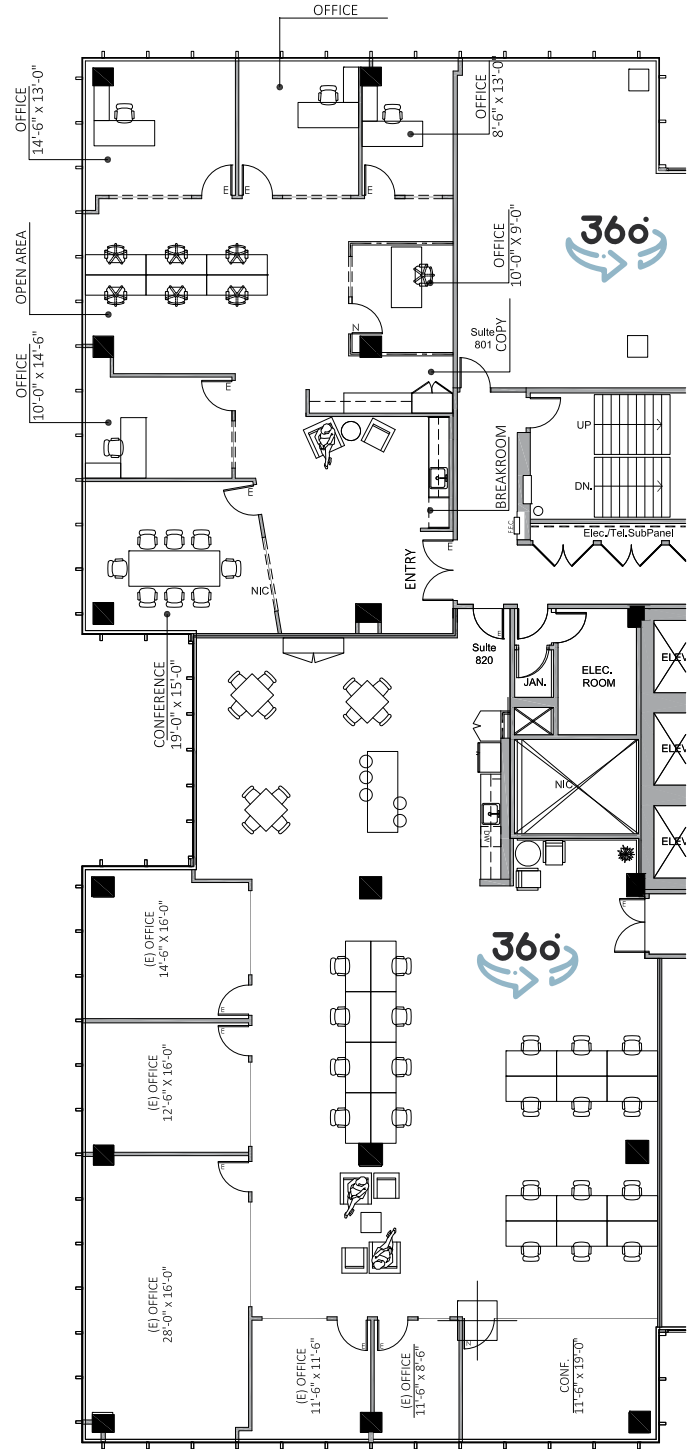
RSF - TOTAL	±1,779 RSF
RENT	\$5.50/SF FSG
CEILING HEIGHT	11'10" TO CEILING
OCCUPANCY	COMING SOON
CONDITION	CREATIVE/MOVE-IN READY



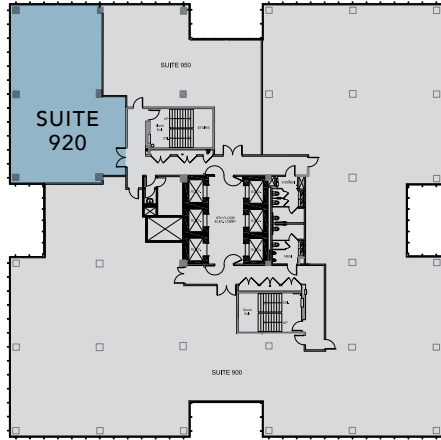
Suites 850 + 860



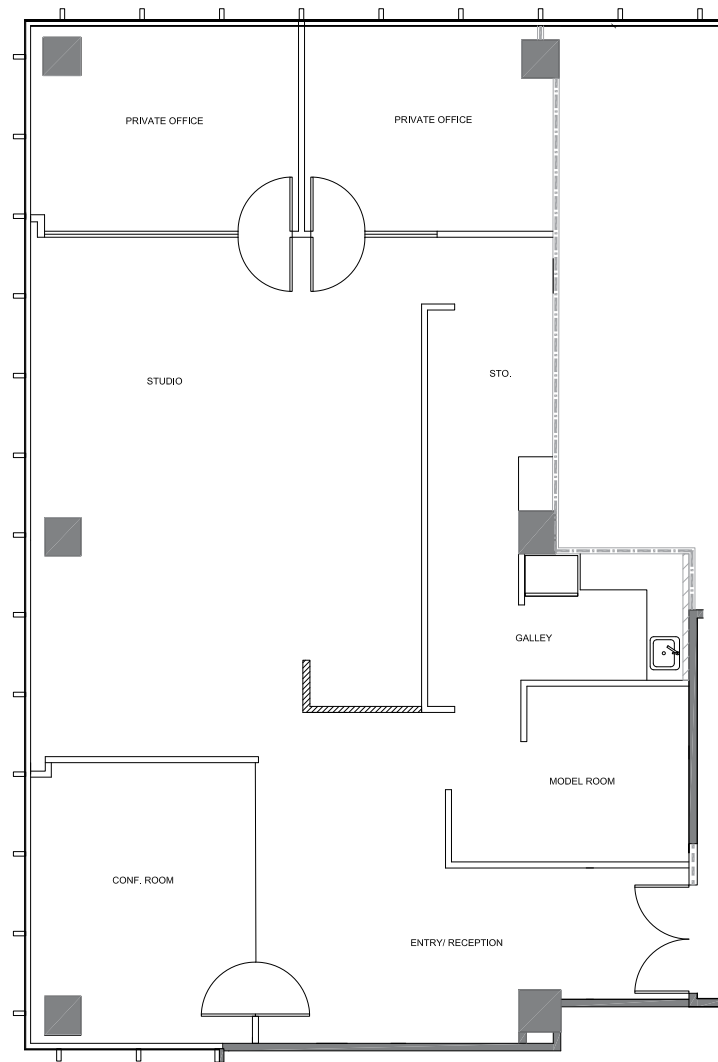
RSF - TOTAL	±7,349 RSF
SUITE 850	±4,854 RSF
SUITE 860	±2,525 RSF
RENT	\$5.50/SF FSG
CEILING HEIGHT	11'10" TO CEILING
OCCUPANCY	NOW
CONDITION	MOVE-IN READY/ CREATIVE
VIRTUAL TOURS	SUITE 850 SUITE 860



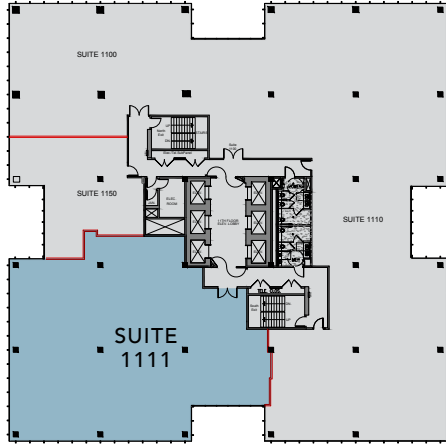
Suite 920



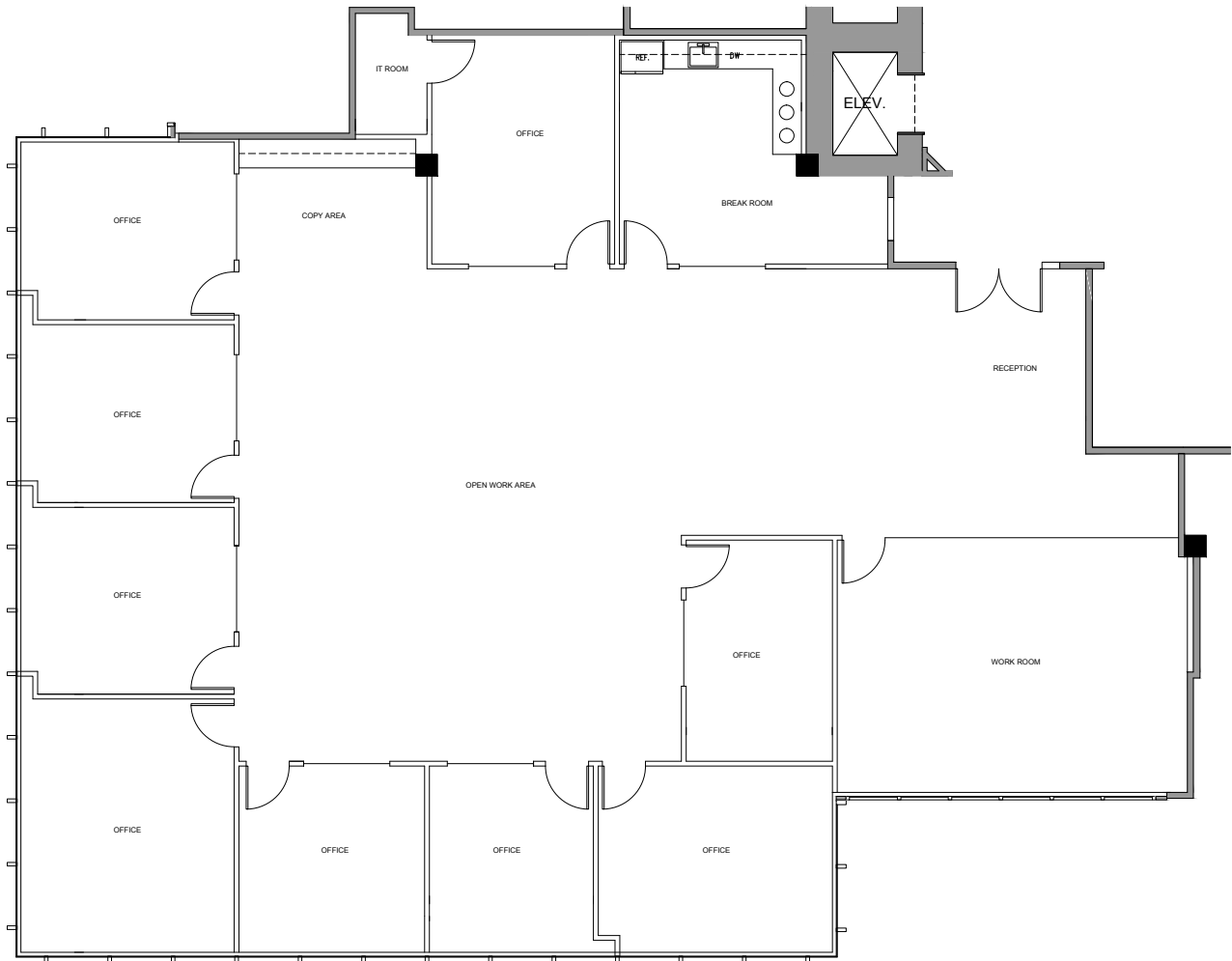
RSF - TOTAL	±2,233 RSF
RENT	\$5.50/SF FSG
CEILING HEIGHT	11'10" TO CEILING
OCCUPANCY	COMING SOON
CONDITION	MOVE-IN READY / 2ND GEN



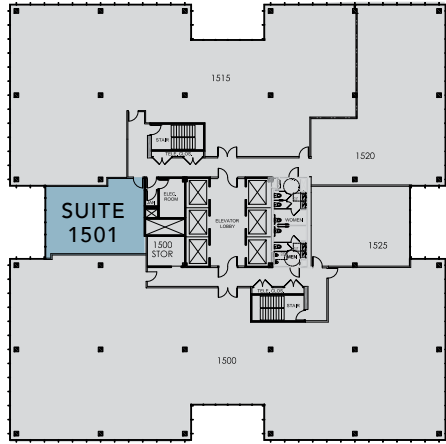
Suite 1111



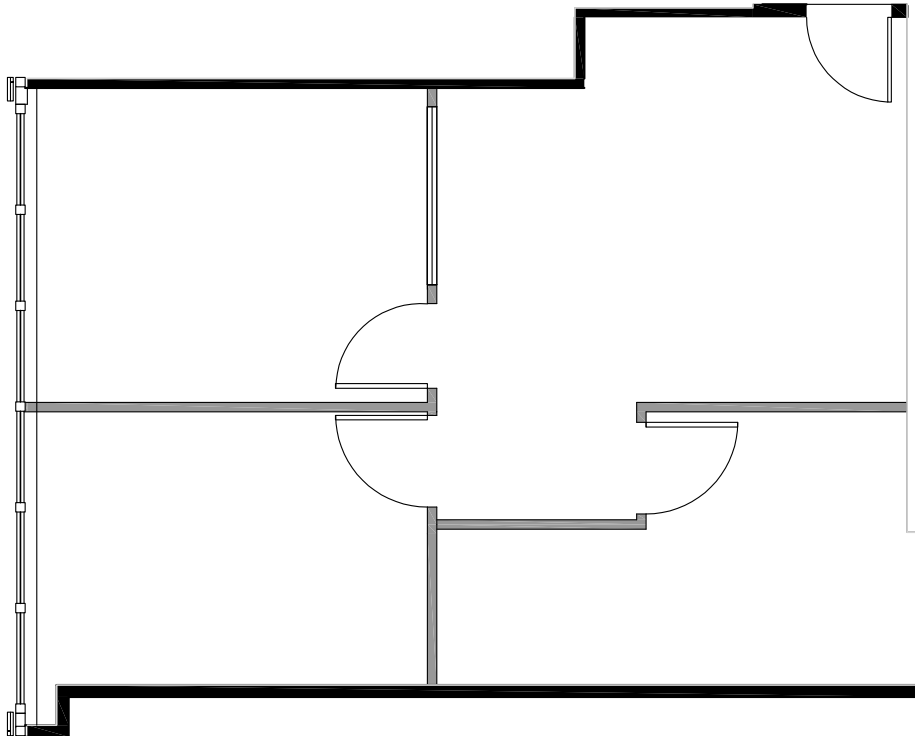
RSF - TOTAL	±5,175 RSF
RENT	\$5.50/SF FSG
CEILING HEIGHT	11'10" TO CEILING
OCCUPANCY	NOW
CONDITION	MOVE-IN READY / CREATIVE



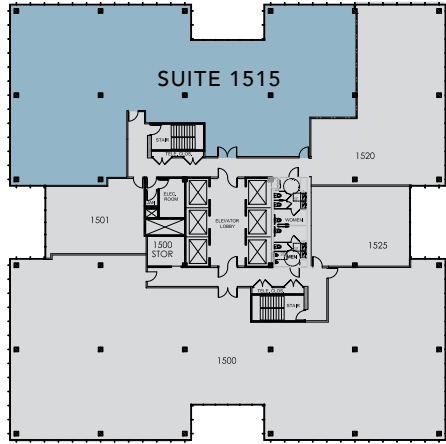
Suite 1501



RSF - TOTAL	±848 RSF
RENT	\$5.50/SF FSG
CEILING HEIGHT	11'10" TO CEILING
OCCUPANCY	NOW
CONDITION	SHELL/CREATIVE*

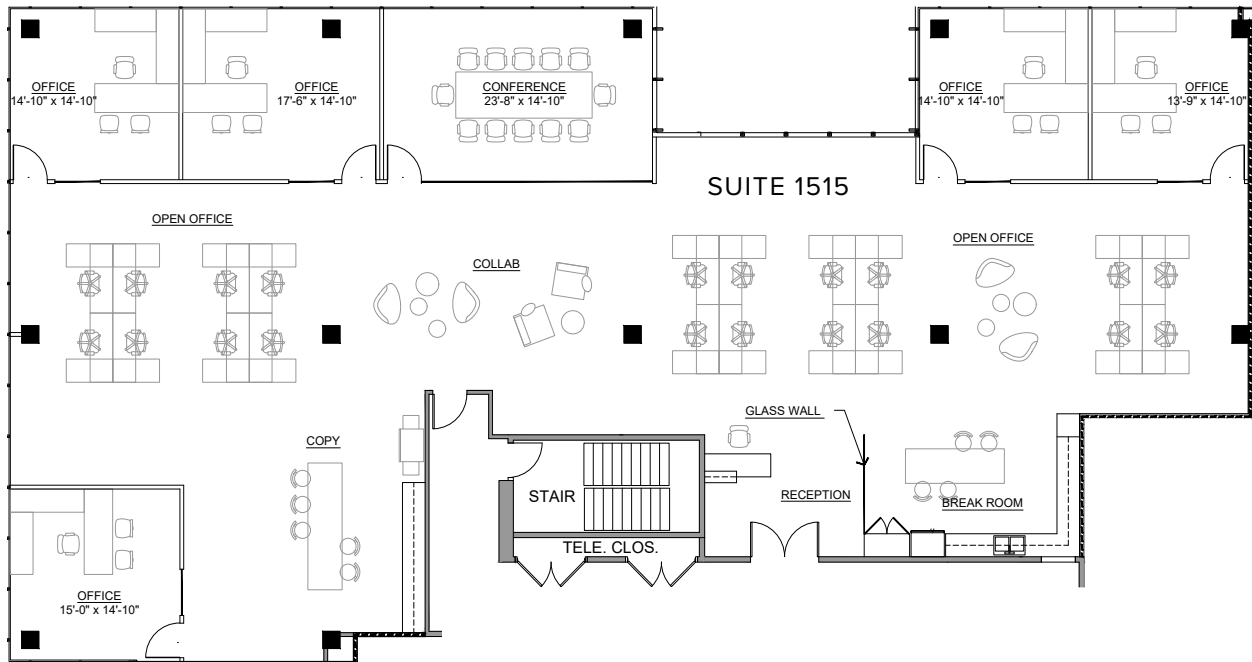


Suite 1515

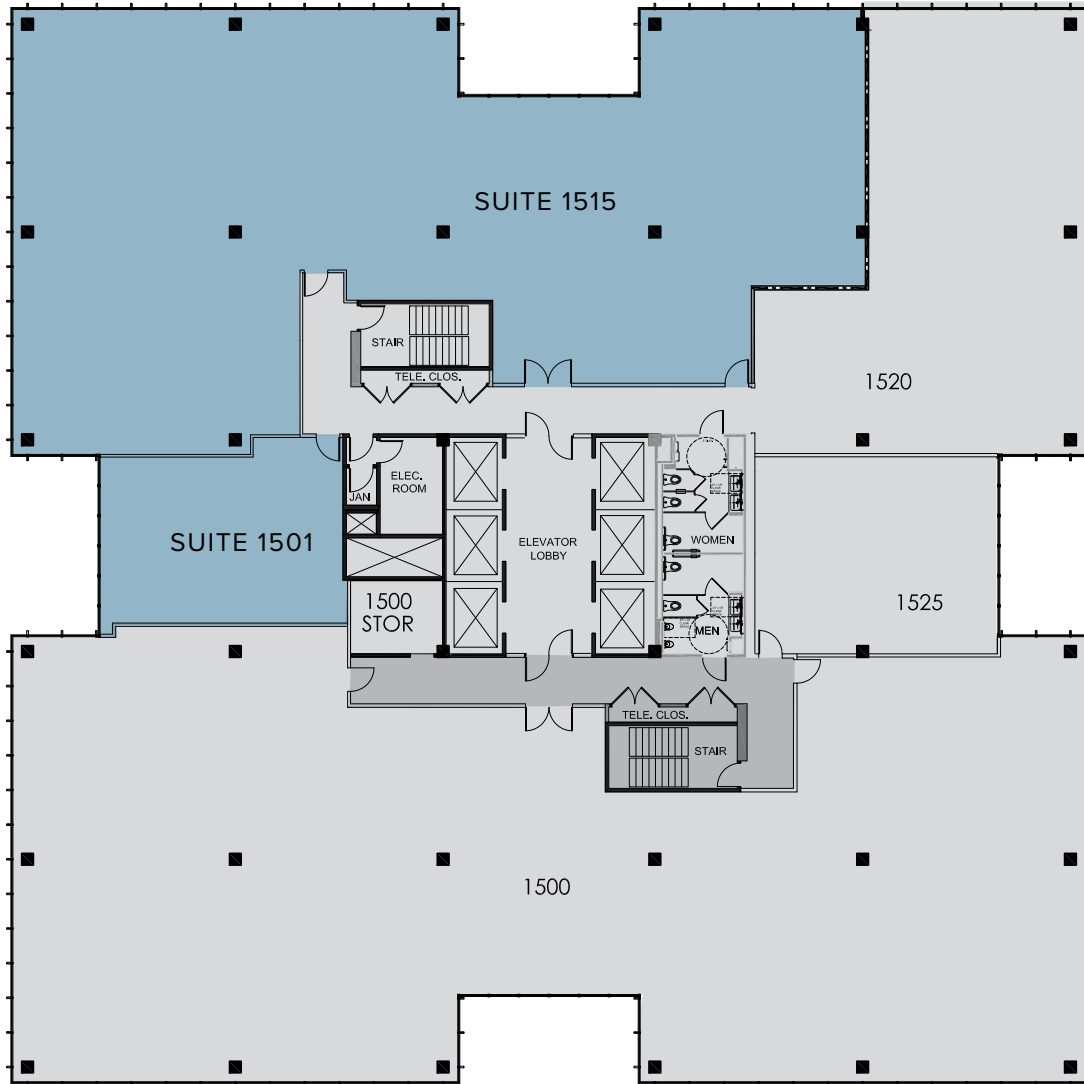


RSF - TOTAL	±5,788 RSF
RENT	\$5.50/SF FSG
CEILING HEIGHT	11'10" TO CEILING
OCCUPANCY	NOW
CONDITION	SHELL/CREATIVE*

*CONCEPTUAL SPACE PLAN SHOWN

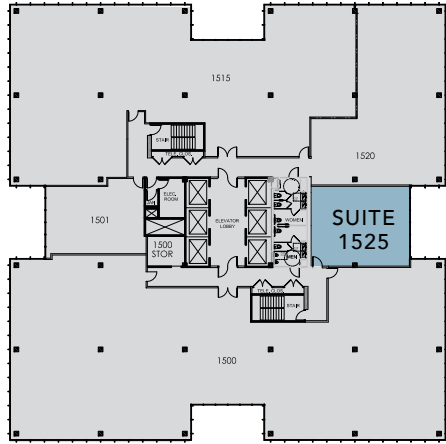


Suites 1501 / 1515

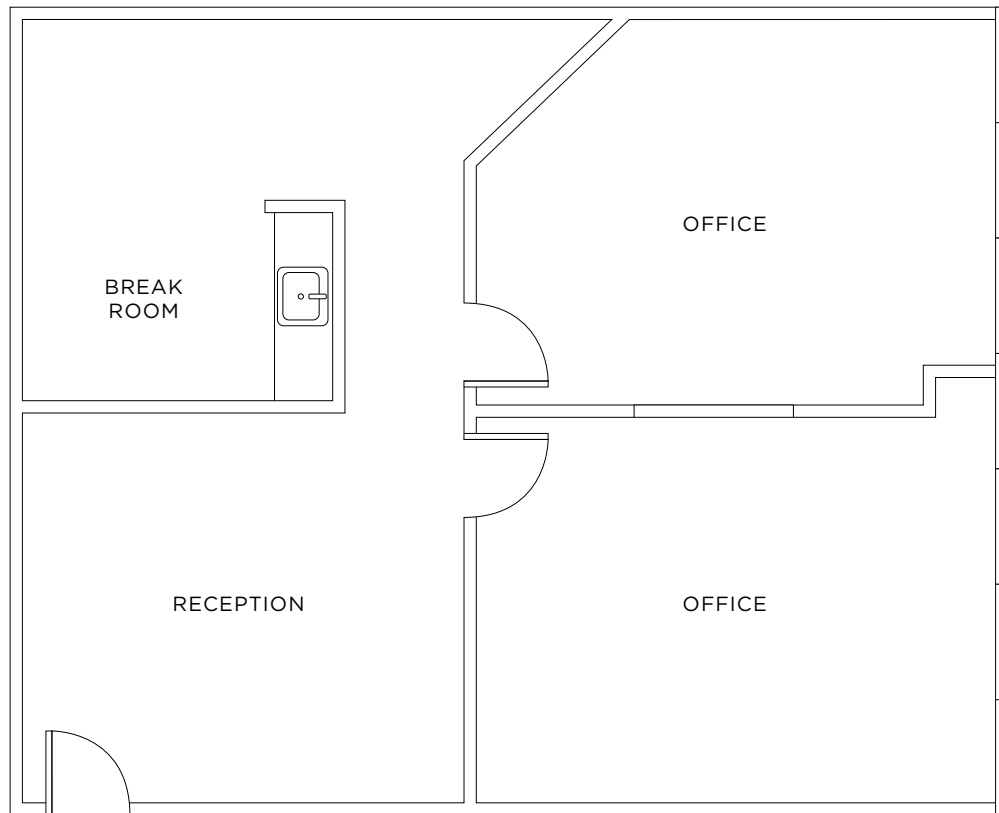


RSF - TOTAL	±6,636 RSF
RENT	\$5.50/SF FSG
CEILING HEIGHT	11'10" TO CEILING
OCCUPANCY	COMING SOON
CONDITION	SHELL/CREATIVE*

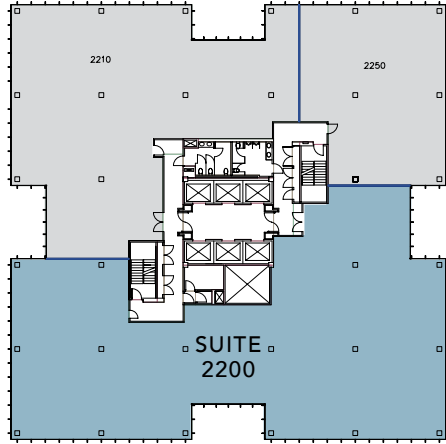
Suite 1525



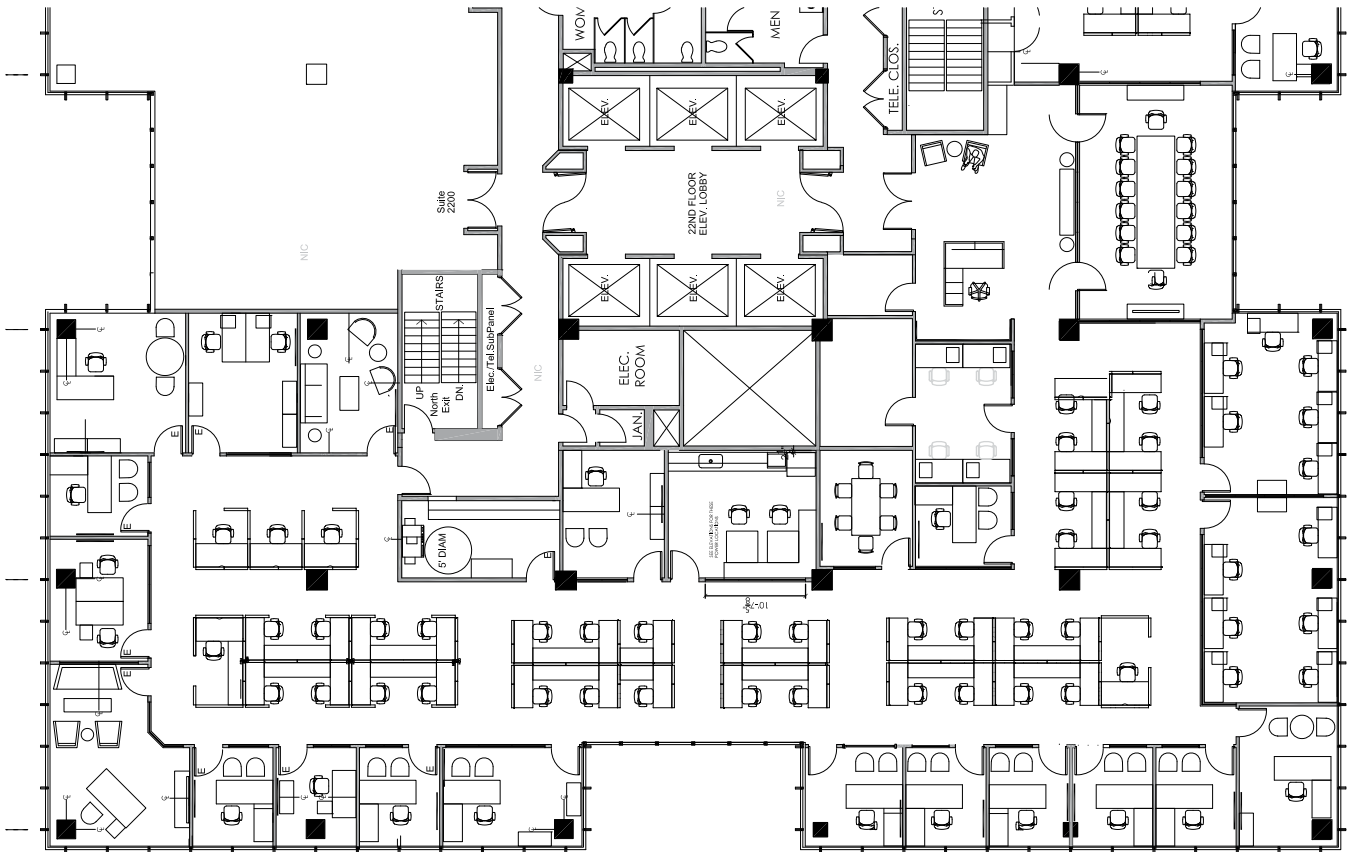
RSF - TOTAL	±953 RSF
RENT	\$5.50/SF FSG
CEILING HEIGHT	11'10" TO CEILING
OCCUPANCY	NOW
CONDITION	MOVE-IN READY/ CREATIVE



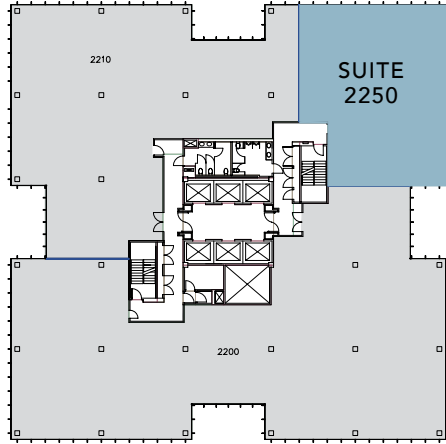
Suite 2200



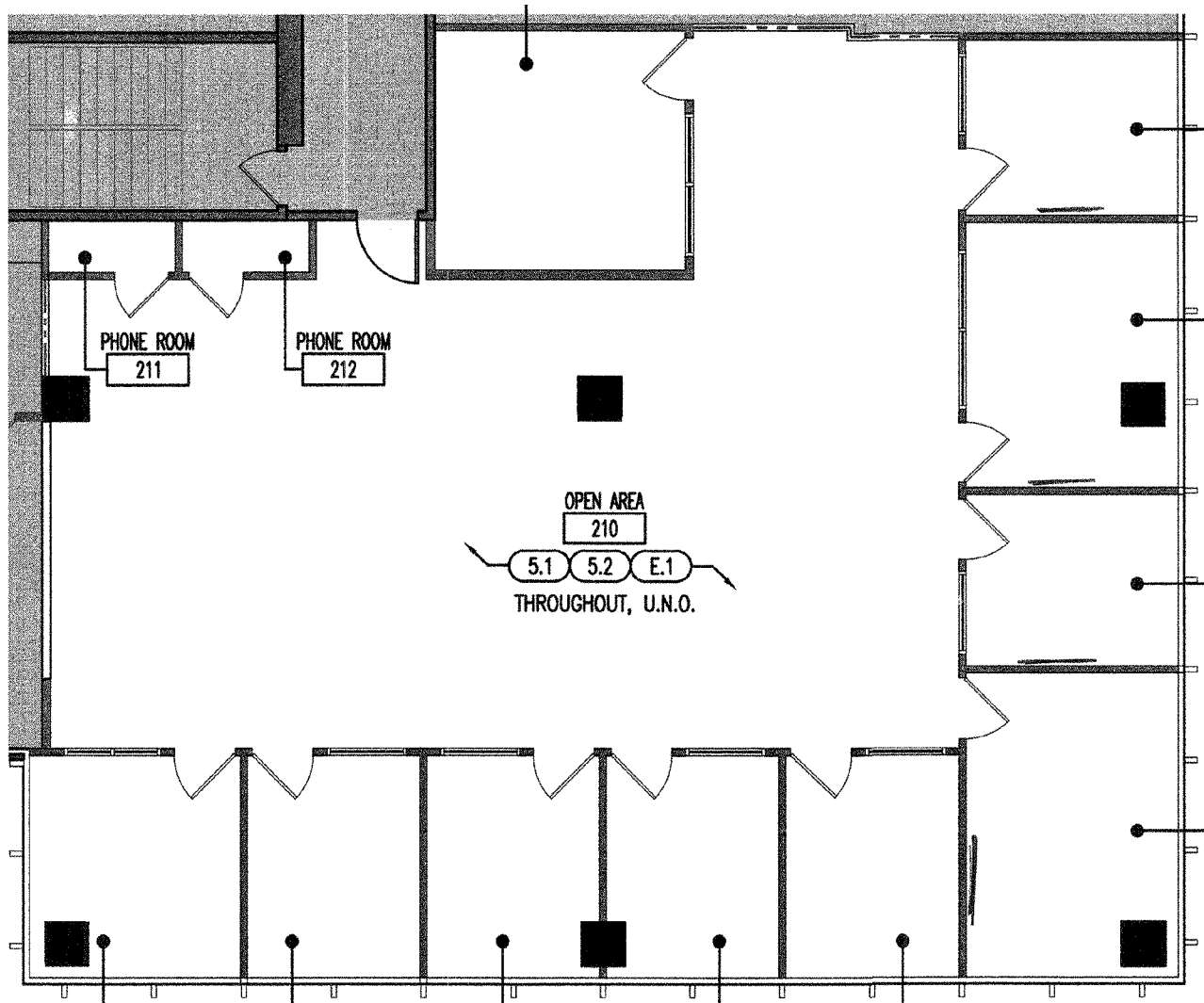
RSF - TOTAL	±9,086 RSF
RENT	\$5.85/SF FSG
CEILING HEIGHT	11'10" TO CEILING
OCCUPANCY	COMING SOON
CONDITION	MOVE-IN READY / 2ND GEN



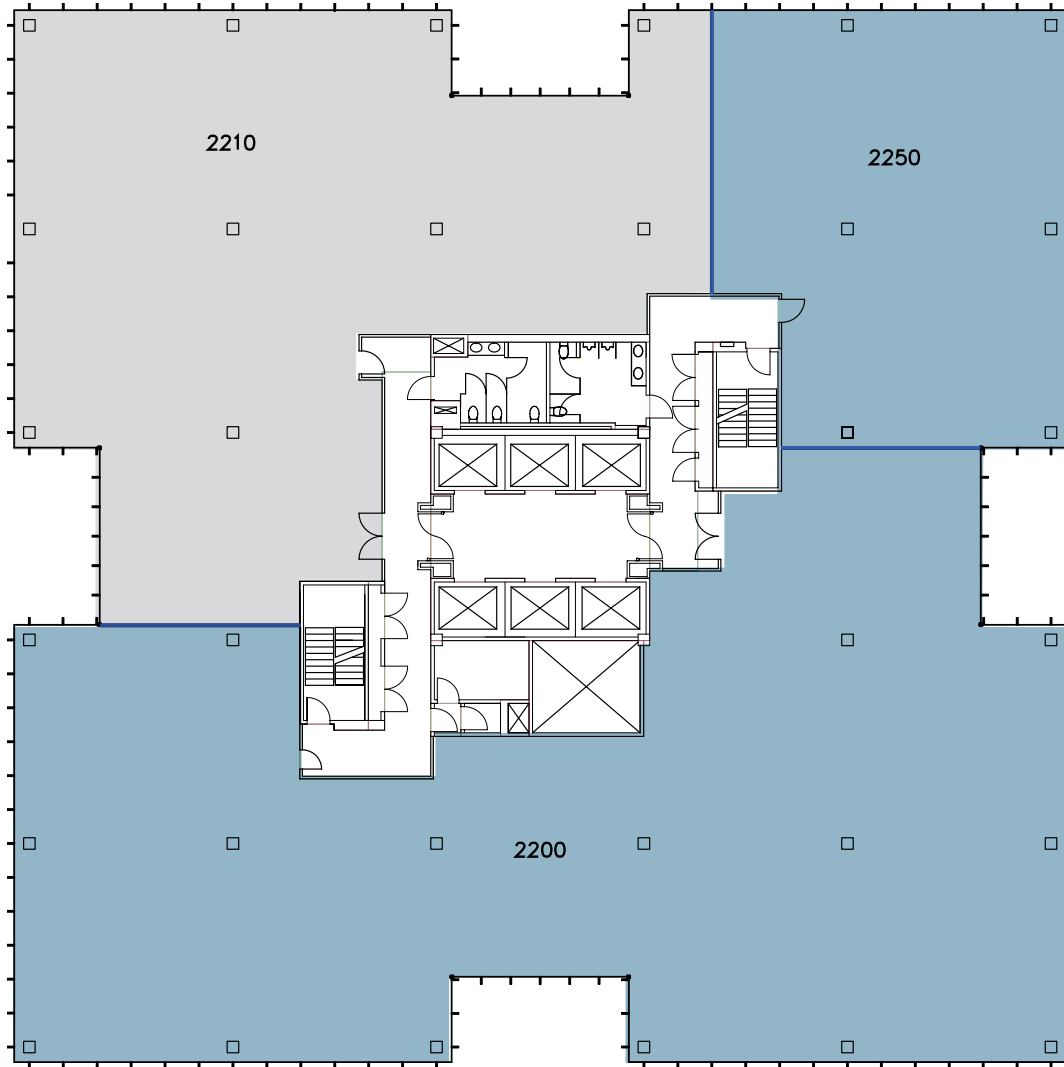
Suite 2250



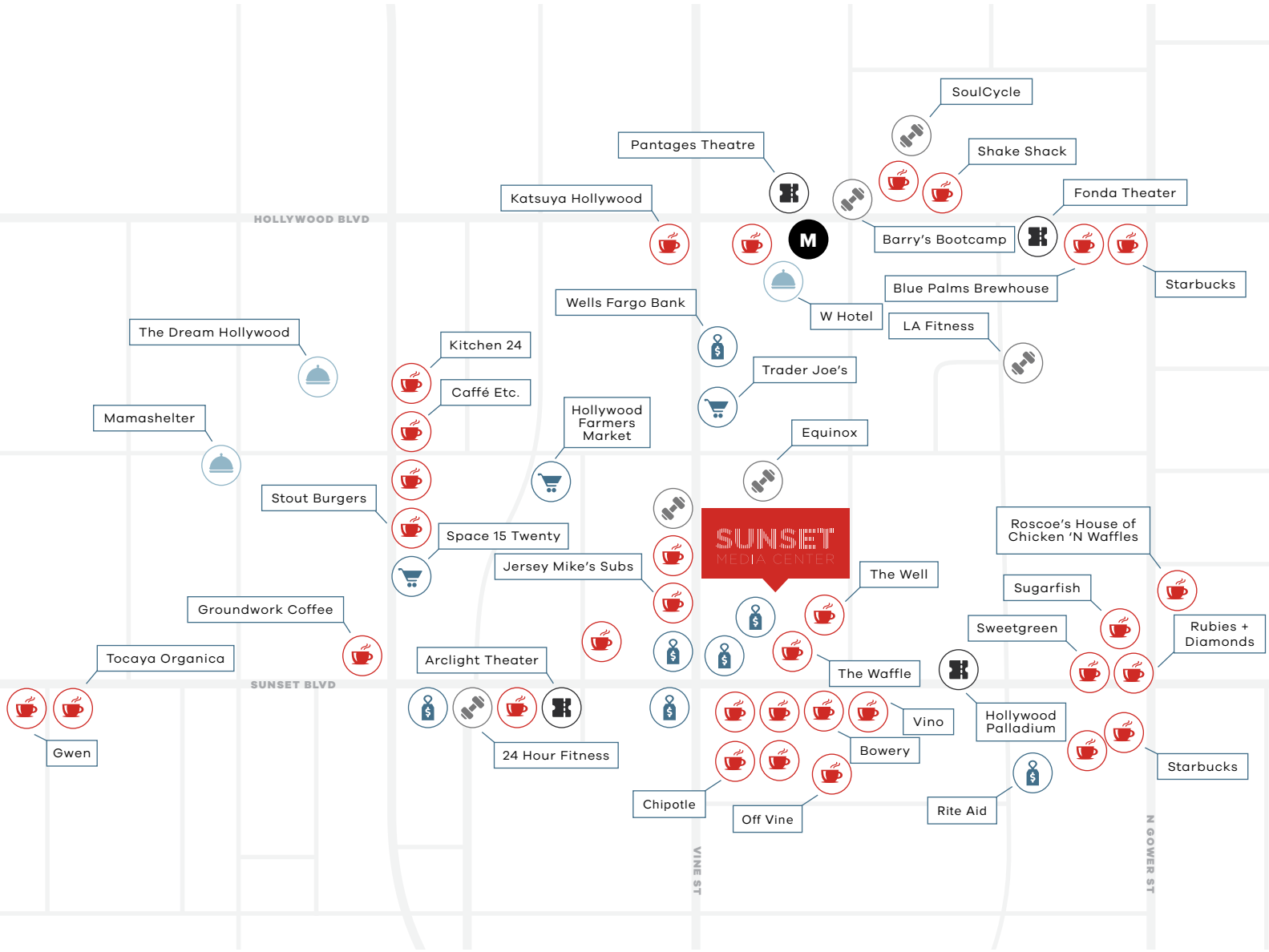
RSF - TOTAL	±2,916 RSF
RENT	\$5.85/SF FSG
CEILING HEIGHT	11'10" TO CEILING
OCCUPANCY	COMING SOON
CONDITION	MOVE-IN READY / 2ND GEN










Suites 2200 / 2250



RSF - TOTAL	±12,002 RSF
RENT	\$5.85/SF FSG
CEILING HEIGHT	11'10" TO CEILING
OCCUPANCY	COMING SOON
CONDITION	MOVE-IN READY / 2ND GEN



Area Amenities

-  Restaurant
-  Athletic Facility
-  Retail Center
-  Hotel
-  Retail Service
-  Metro
-  Theater

Operational Excellence

KILROY REALTY IS PREPARED

- Dedicated on-site management and 24-hour building security
- All building safety protocols are in compliance with CDC and WHO public health guidelines
- Increased janitorial services to sanitize high-touch areas
- Destination dispatch system reduces elevator lobby wait time
- Access-controlled stairwells reduce elevator congestion
- New hand sanitizing stations on every floor
- LEED-Gold Certified
- Energy Star Certified
- Fitwel Certified
- Green cleaning practices

PRODUCTIVELY EXPAND YOUR SOCIAL DISTANCE

- Large outdoor area for safely meeting guests, messengers, and deliveries
- Expand in-suite food delivery with 1-block radius options including Starbucks, Tender Greens, sweetgreen, SUGARFISH by sushi nozawa, Chipotle, Trader Joe's, and more
- Flexible floor plates allow for distanced and collaborative layouts





LEASING CONTACTS
+1 213 239 6000



CARL MUHLSTEIN
LICENSE #00595250

DANA VARGAS
LICENSE #01943620

PETER HAJIMIHALIS
LICENSE #01994663

©2020 JONES LANG LASALLE IP, INC.
JONES LANG LASALLE BROKERAGE, INC. LIC. #01856260