



# 1818 Market Street

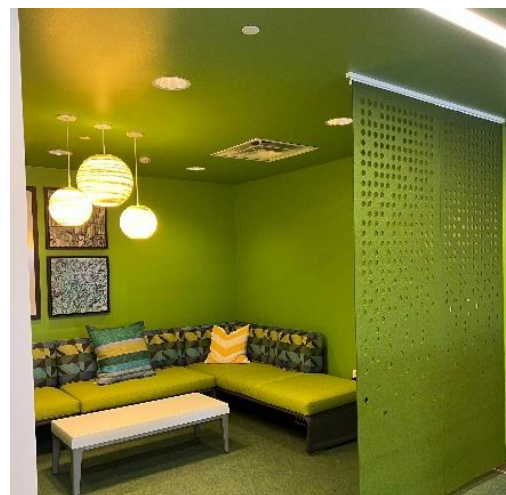
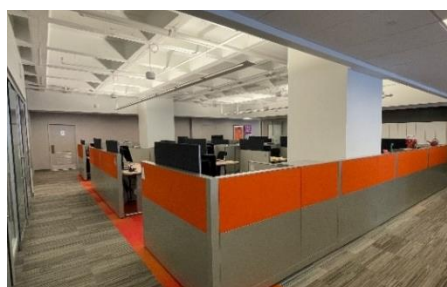
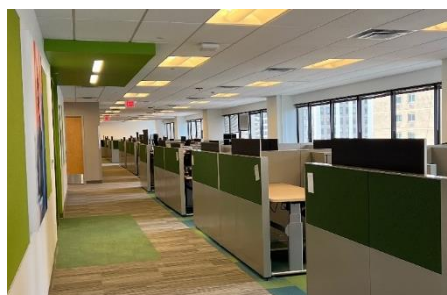
19<sup>th</sup> Floor Sublease  
Philadelphia, PA



**29,609 RSF of Class A office  
space available for sublease**

## Building Highlights

- Tenant only conference center
- Tenant only fitness center
- On-site parking (408 spaces)
- Bike storage
- 24/7 security
- On-site management



## Contact

**Regan Rich**  
Associate  
+1 484 790 1909  
[regan.rich@am.jll.com](mailto:regan.rich@am.jll.com)

**Eric Berkowitz**  
Senior Associate  
+1 610 416 2226  
[eric.berkowitz@am.jll.com](mailto:eric.berkowitz@am.jll.com)

**Alex Breitmayer**  
Executive Vice President  
+1 215 399 1813  
[alex.breitmayer@am.jll.com](mailto:alex.breitmayer@am.jll.com)



Although information has been obtained from sources deemed reliable, neither Owner nor JLL makes any guarantees, warranties or representations, express or implied, as to the completeness or accuracy as to the information contained herein. Any projections, opinions, assumptions or estimates used are for example only. There may be differences between projected and actual results, and those differences may be material. The Property may be withdrawn without notice. Neither Owner nor JLL accepts any liability for any loss or damage suffered by any party resulting from reliance on this information. If the recipient of this information has signed a confidentiality agreement regarding this matter, this information is subject to the terms of that agreement. ©2022. Jones Lang LaSalle IP, Inc. All rights reserved.



# 1818 Market Street

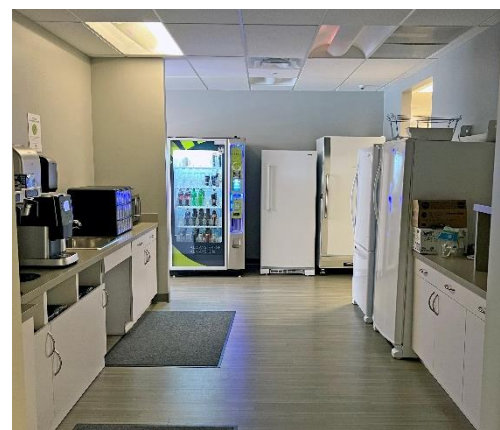
19<sup>th</sup> Floor Sublease  
Philadelphia, PA

## Plug and play opportunity:

- 29,609 RSF – entire 19th floor available
- Furniture is new and available
- Lease expiration: 02/28/25

## Suite Highlights

- Two executive conference rooms
- 100+ workstations
- Full kitchen and dining area



Jones Lang LaSalle Brokerage, Inc.  
1650 Arch Street, Suite 2500, Philadelphia, PA 19103 | +1 215 988 5500

