



Miami Cargo Park - Cold Storage

3400 NW 74th Avenue, Miami, FL 33122

Miami Cargo Park offers a unique opportunity to lease 273,714 SF of industrial space with 252,339 SF of cold storage to 35°. Ideally located in the Airport West Submarket two miles from the MIA cargo entrance, the property is perfectly situated to service retail, commercial and wholesale networks. Institutionally owned and managed facility with 600,000-SF shared by 4 tenants on ±25 acres.

Specifications

273,714 SF
AVAILABLE

21,375 SF
OFFICE AREA

28'
CLEAR HEIGHT

51'w x 39'd
COLUMN SPACING

39
DOCK DOORS

1
DRIVE-IN RAMP

586'
BUILDING DEPTH

311
TOTAL PARKING SPACES

100'
LOADING POSITIONS

Q2 2022
AVAILABILITY

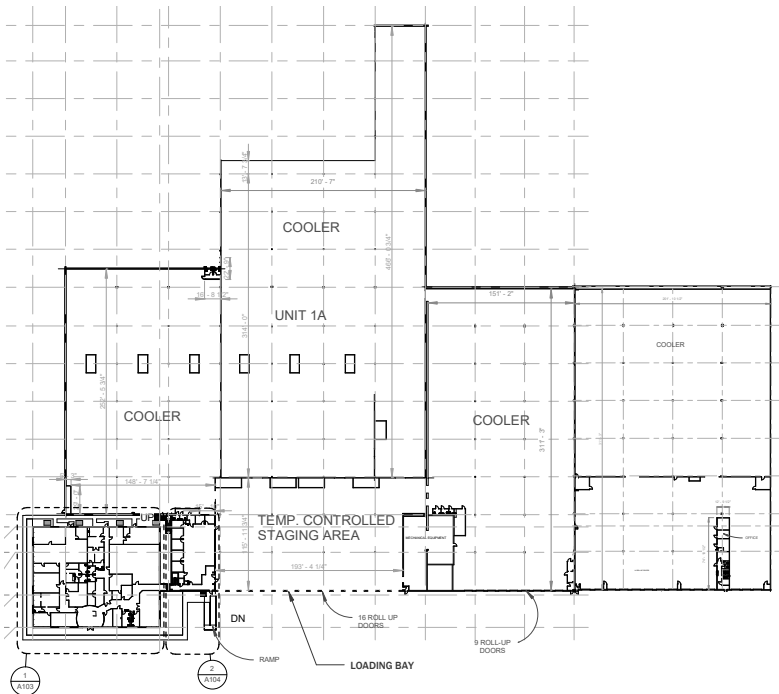
**2 Miles to Miami
International Cargo
Entrance**

7 Miles to PortMiami

15 Miles to Port Everglades

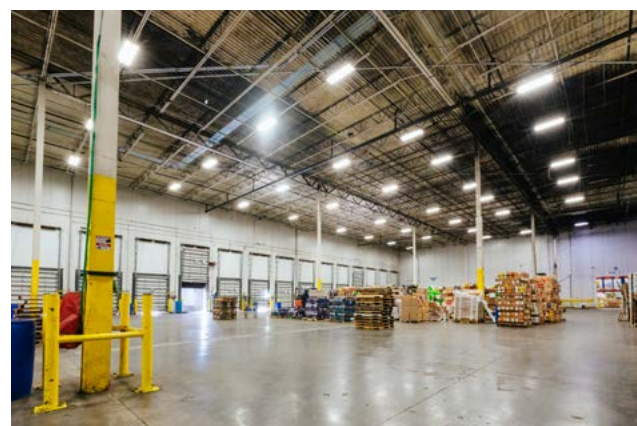
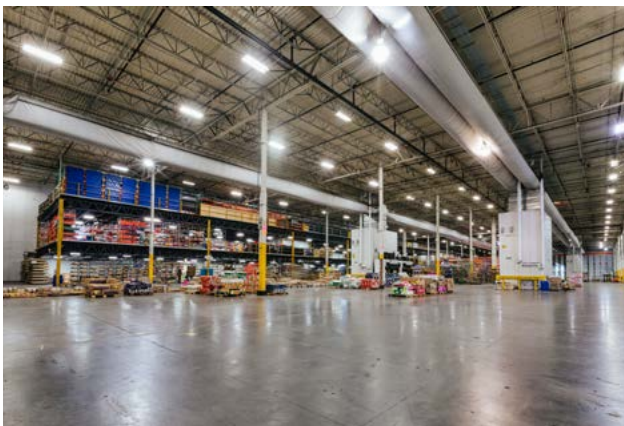
**1 Mile to SR826 via NW
25th Street**





Cooler Overview

1000 TR Central Ammonia refrigeration system utilizing recirculated liquid feed, provides cooling to 252,339 SF of cooler and dock space with room temperatures down to 35° F. The system, built in 2008, is fully automated and has provisions for remote monitoring and built-in redundancy. The system has provisions on the dock to remove product load prior to loading the coolers. There is also the ability to convert 24,000 SF into freezer space.



Contacts

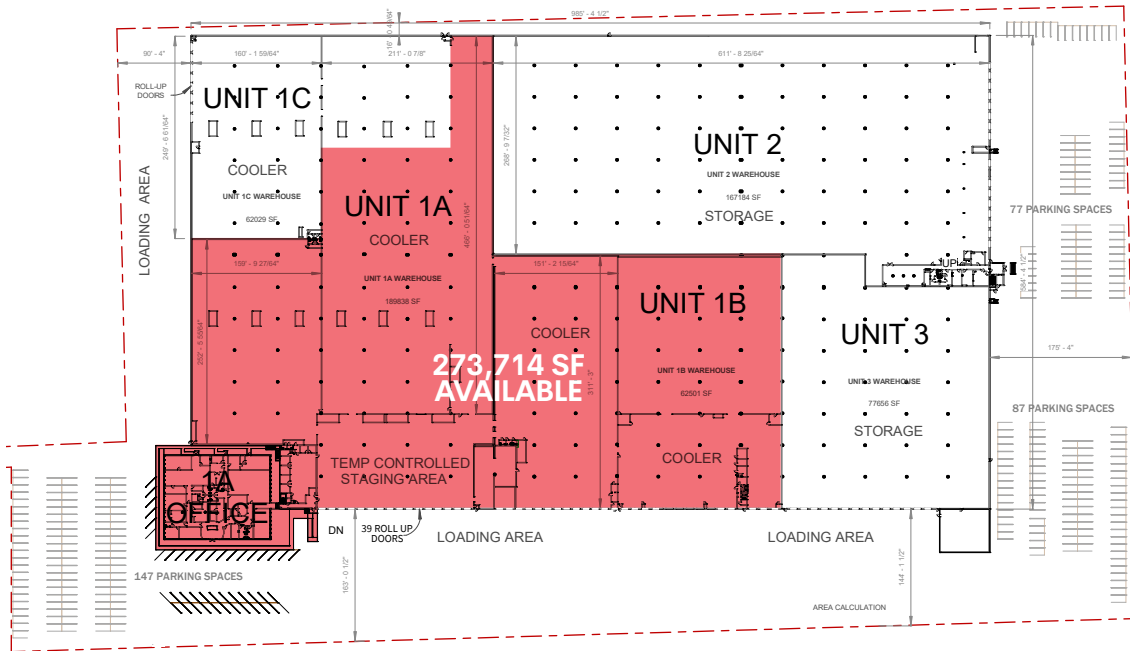
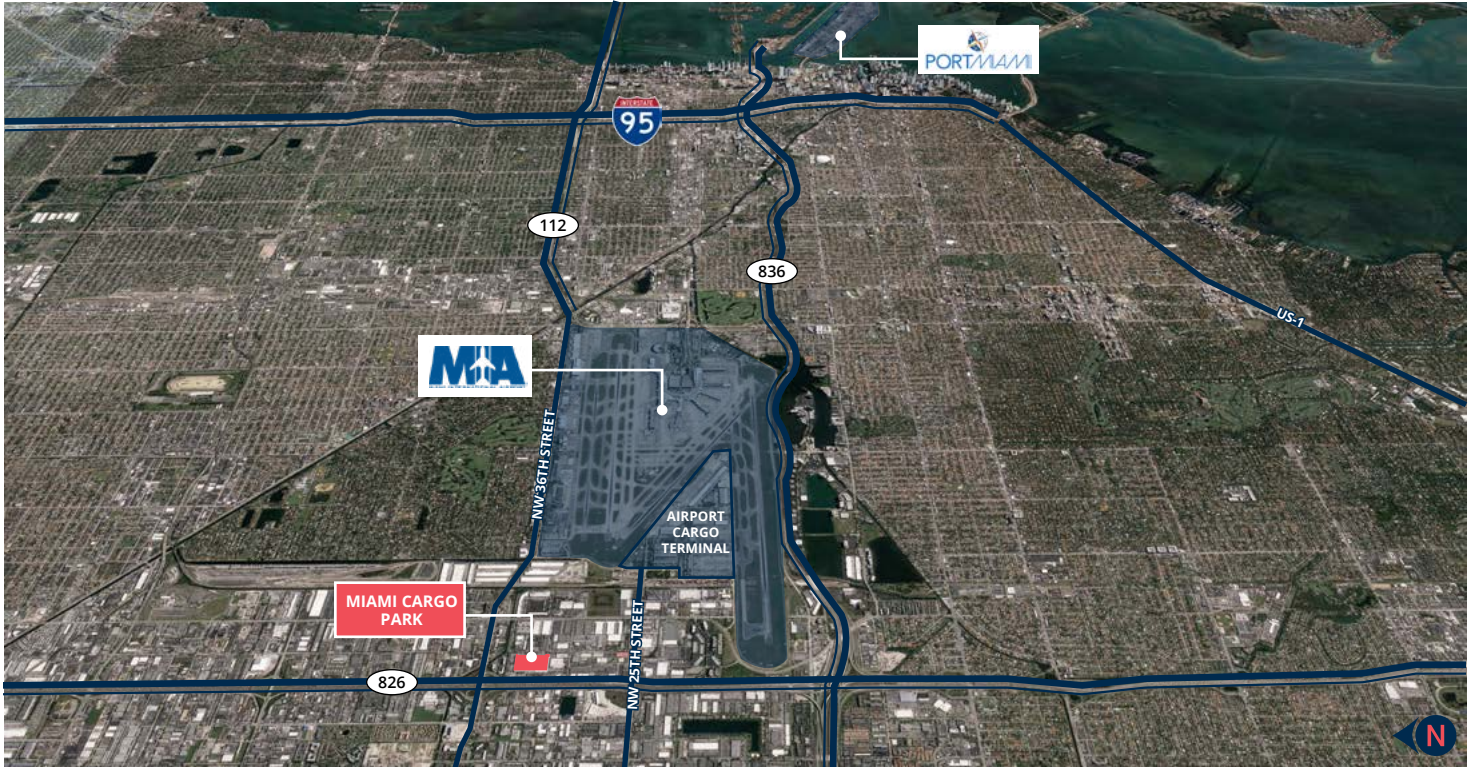


Brian Smith
D 305 960 8403
smith.brian@am.jll.com

Audley Bosch
D 305 960 8404
audley.bosch@am.jll.com

Matt Maciag
D 305 960 8409
matt.maciag@am.jll.com

Keith Edwards
D 404 941 8467
keith.edwards@brookfieldproperties.com



Contacts



Brian Smith
D 305 960 8403
smith.brian@am.jll.com

Audley Bosch
D 305 960 8404
audley.bosch@am.jll.com

Matt Maciag
D 305 960 8409
matt.maciag@am.jll.com

Keith Edwards
D 404 941 8467
keith.edwards@brookfieldproperties.com