



2320 BLANDING

Alameda, CA

Up to 43,106 square feet
available, divisible down to
13,253 square feet

Jon Elder

+1 510 465 9402
jon.elder@am.jll.com
RE License # 01753023

Sam Swan

+1 510 465 9401
sam.swan@am.jll.com
RE License # 00992868

Kristi Childers

+1 510 465 9408
kristi.childers@am.jll.com
RE License # 01997043



Jones Lang LaSalle Brokerage, Inc. Real Estate License #: 01856260

2320 BLANDING

Floor/Suite	R.S.F.	Description / Features
1st Floor	12,674	13 offices, conference room, breakroom, open office area
2nd Floor	21,843	21 offices, 4 conference rooms, 2 breakrooms, kitchen, reception area, open office area
3rd Floor	8,589	8 offices, conference room, breakroom, kitchen, open office area



BUILDING & AREA HIGHLIGHTS

- Creative office buildout with interconnecting open staircase totaling 43,106 RSF
- Easy access from Park Street Bridge directly to 880 Freeway
- Located next to Park Street with numerous restaurants and local, regional and national retailers
- Free on-site and street parking available



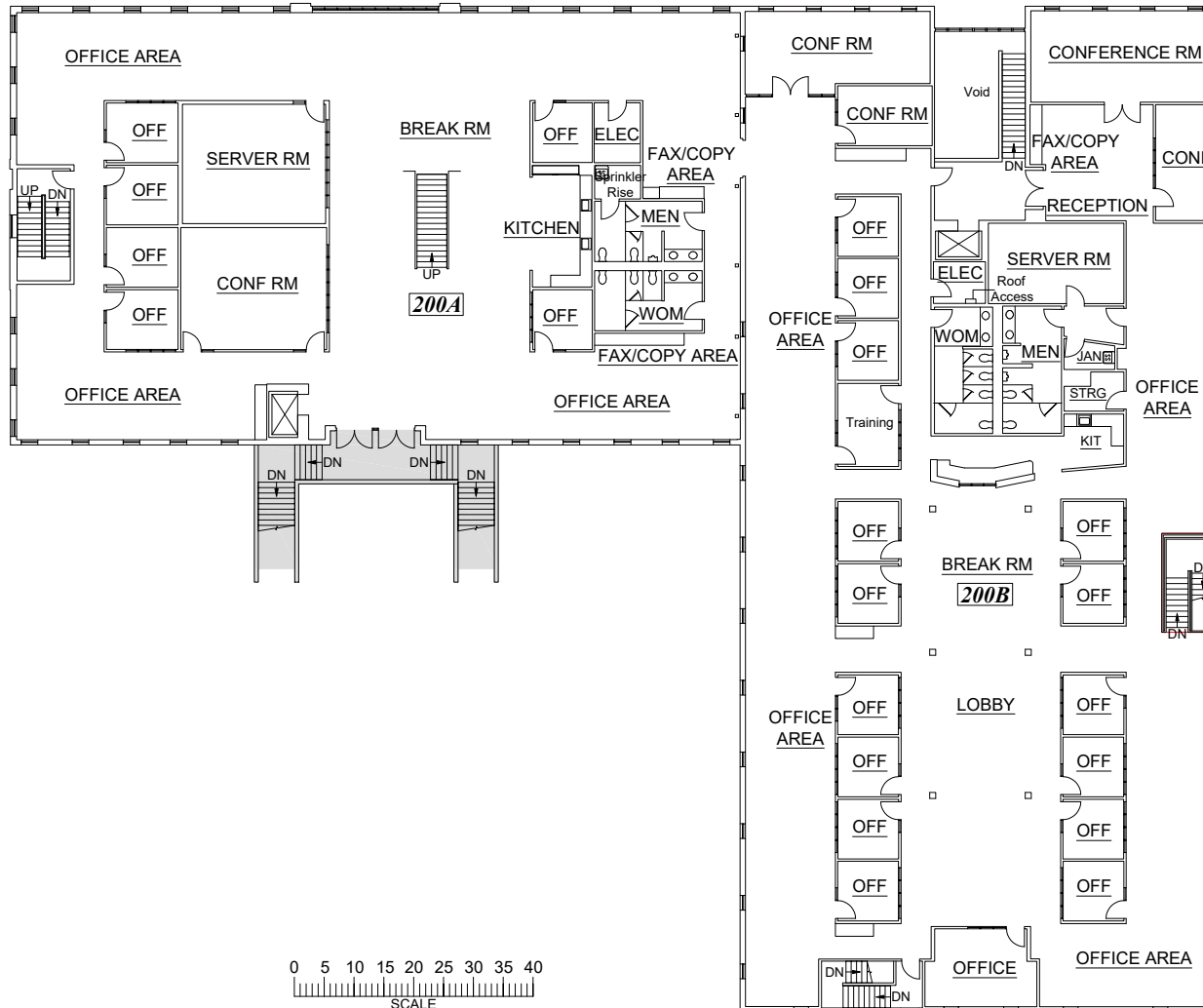
CENTER OF THE BAY AREA

- 2320 Blanding is located near I-880, Downtown Oakland, AC Transit, BART, and the Alameda/San Francisco Ferry
- 10 minutes from Downtown Oakland, adjacent to Downtown Alameda, and 30 minutes from Downtown San Francisco.



2320 BLANDING

SECOND FLOOR - 21,843 RSF

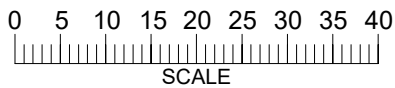
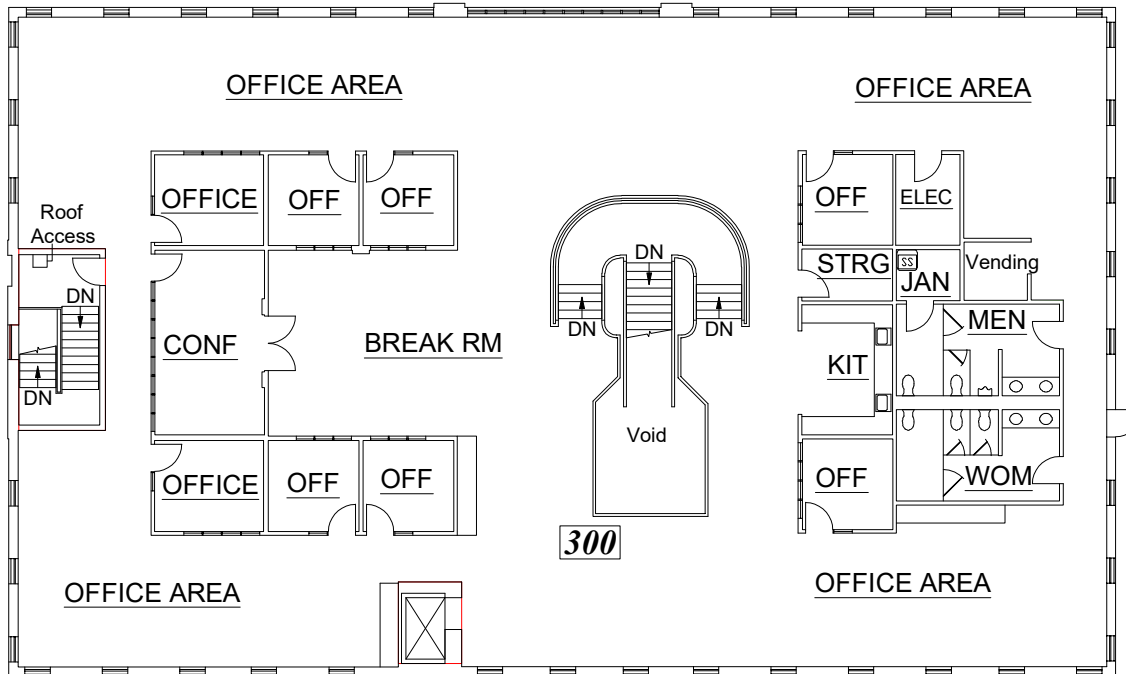


DISCLAIMER

Copyright © 2019 Jones Lang LaSalle IP, Inc. All rights reserved. All information contained herein is from sources deemed reliable; however, no representation or warranty is made to the accuracy thereof.

2320 BLANDING

THIRD FLOOR - 8,589 RSF



DISCLAIMER

Copyright © 2019 Jones Lang LaSalle IP, Inc. All rights reserved. All information contained herein is from sources deemed reliable; however, no representation or warranty is made to the accuracy thereof.

2320 BLANDING

Divisibility

30,432 RSF



17,179 RSF



13,253 RSF



DISCLAIMER

Copyright © 2019 Jones Lang LaSalle IP, Inc. All rights reserved. All information contained herein is from sources deemed reliable; however, no representation or warranty is made to the accuracy thereof.

2320 BLANDING



Jon Elder
+1 510 465 9402
jon.elder@am.jll.com
RE License # 01753023

Sam Swan
+1 510 465 9401
sam.swan@am.jll.com
RE License # 00992868

Kristi Childers
+1 510 465 9408
kristi.childers@am.jll.com
RE License # 01997043



©2019 Jones Lang LaSalle IP, Inc. All rights reserved. All information contained herein is from sources deemed reliable; however, no representation or warranty is made to the accuracy thereof.
Jones Lang LaSalle Brokerage, Inc. Real Estate License #: 01856260

DISCLAIMER

Copyright © 2019 Jones Lang LaSalle IP, Inc. All rights reserved. All information contained herein is from sources deemed reliable; however, no representation or warranty is made to the accuracy thereof.