

600 S. Caroline Street | 1400 Aliceanna Street | 601 S. Broadway
Baltimore, MD



Upscale Retail Opportunity

Connecting Harbor East and Fell's Point

CHASEN
COMPANIES



Making Connections in Retail

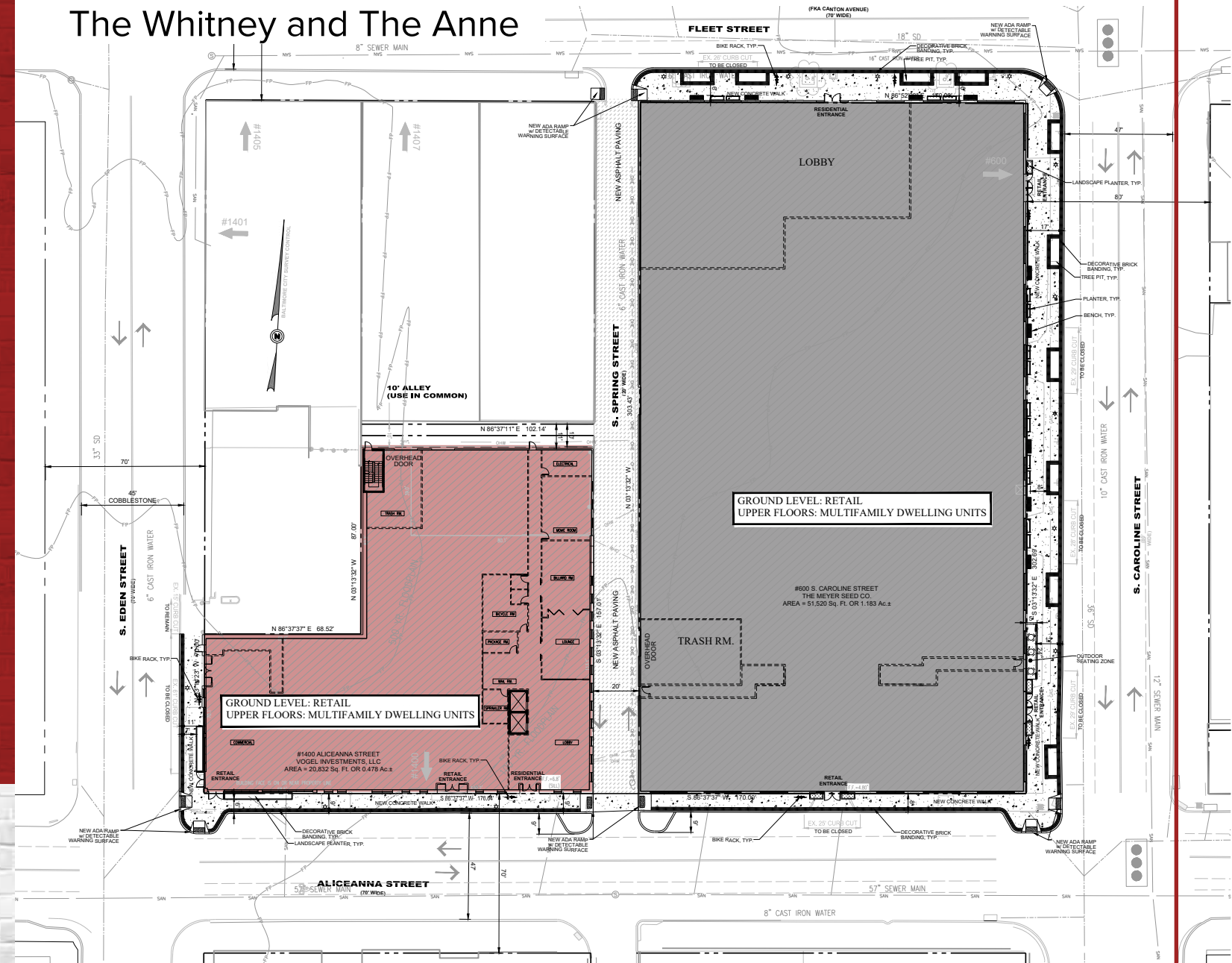
Three newly acquired historic buildings, located in the Harbor East and Fell's Point neighborhoods, will be restored and renovated as state-of-the-art residential buildings atop upscale retail. Although preserved to keep their historic Baltimore charm, these future mixed-use buildings will provide all the modern conveniences residents and visitors demand.

All the retail spaces are street level, are in shell condition and will be delivered with upgraded store fronts. With varying sizes to meet the needs of large to small shops, restaurants and grocery anchors, this new opportunity has something for everyone.

In addition to building renovations, the sidewalks will be expanded and enriched further connecting Fell's Point and Harbor East with added outdoor seating, bike racks and greenery – creating a more pedestrian friendly tie to the surrounding areas.



The Whitney and The Anne

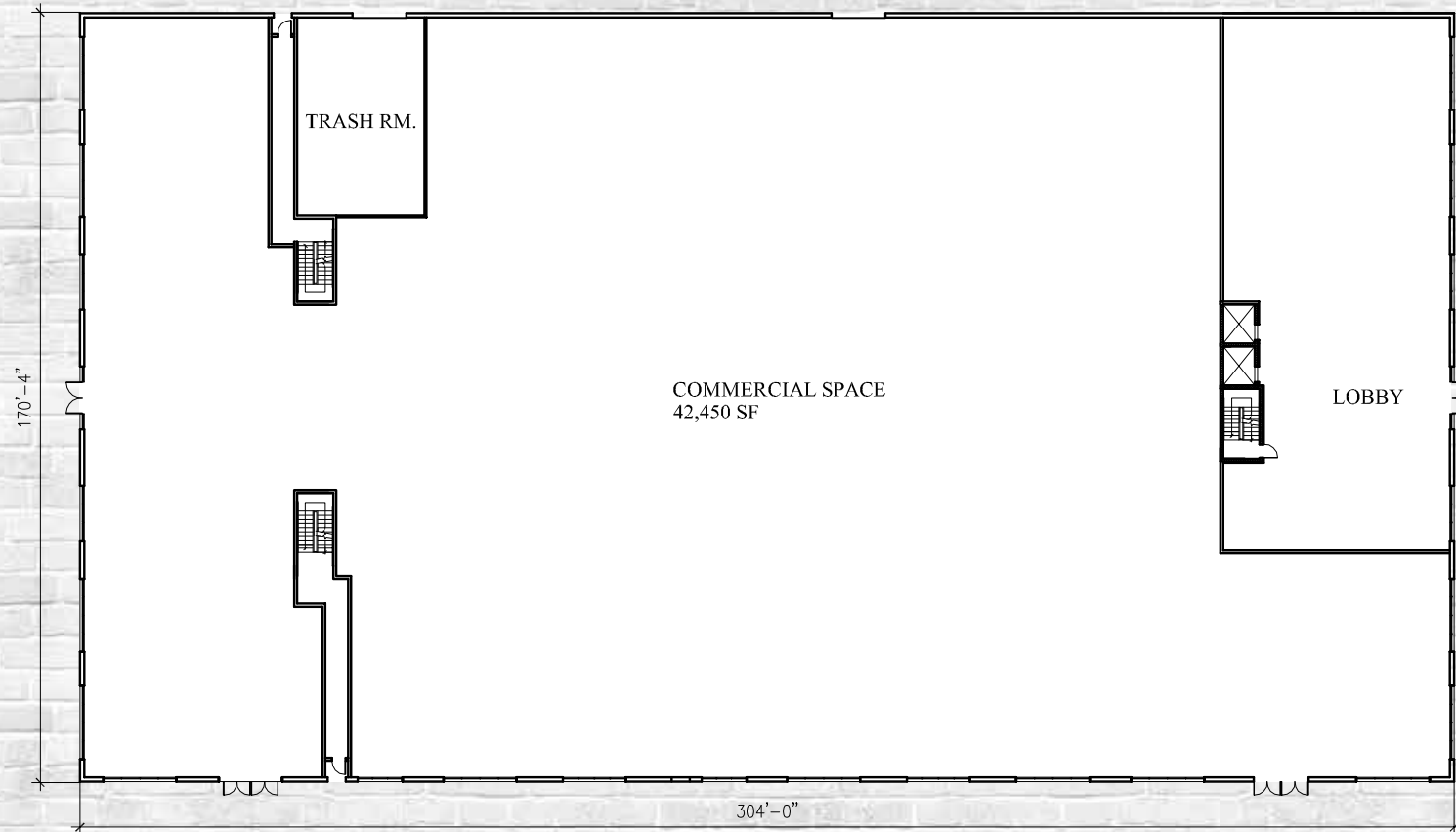


The Whitney

600 S. Caroline Street

42,450 SF
of street level retail

While preserving the century-old architecture with brick facade, The Whitney will be developed into a five-story mixed-use project with 172 luxury boutique apartments and **42,450 square feet of street level retail** space. The retail space is best suited for an urban grocery anchor or upscale apparel shop to complement the high-end retail neighbors of Harbor East.

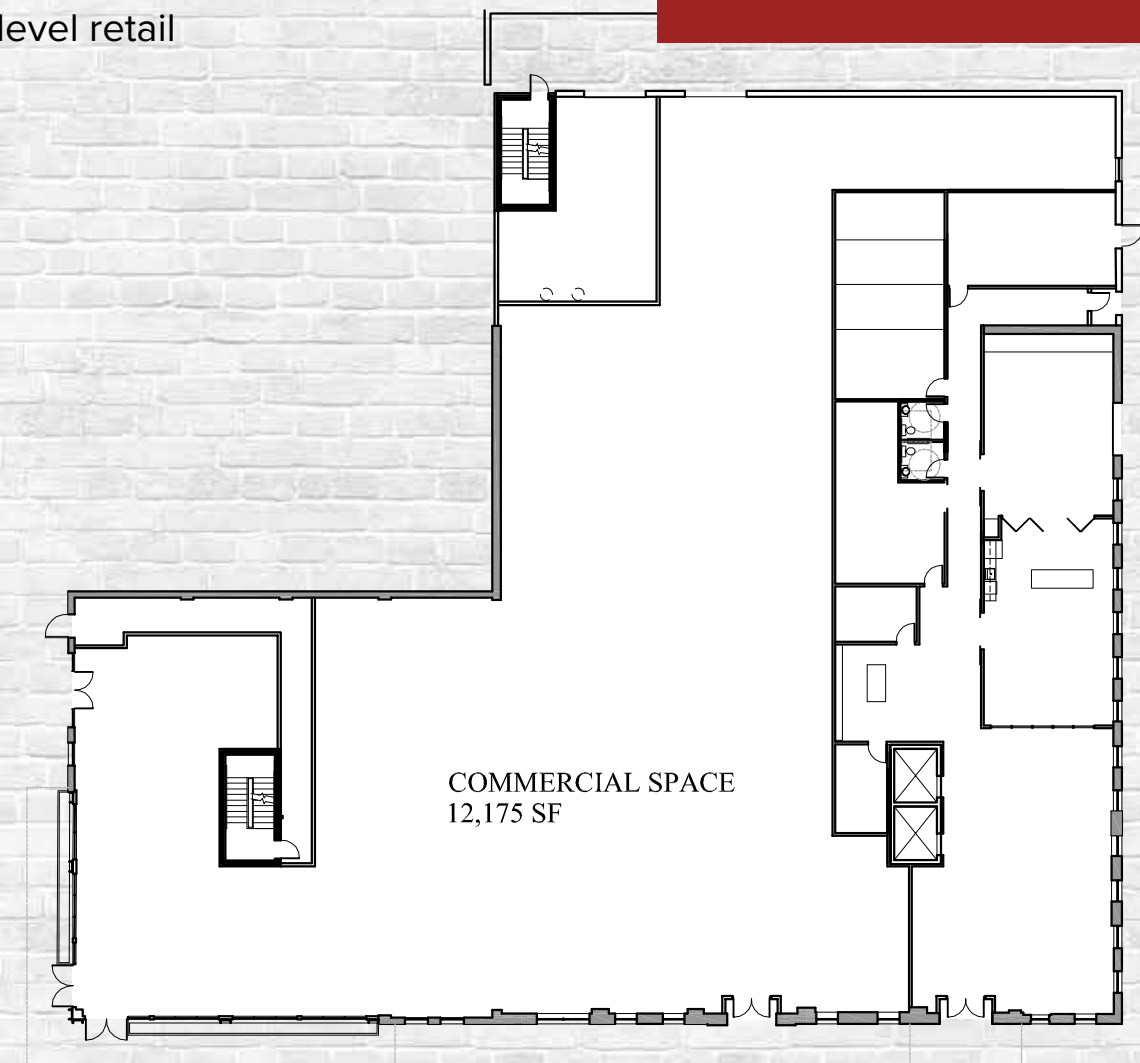


The Anne

1400 Aliceanna Street

12,200 SF
of street level retail

Located adjacent to The Whitney, The Anne is a historic warehouse that is being redeveloped into a five-story mixed-use building featuring 100 luxury boutique apartments as well as **12,200 square feet of street level retail** space.

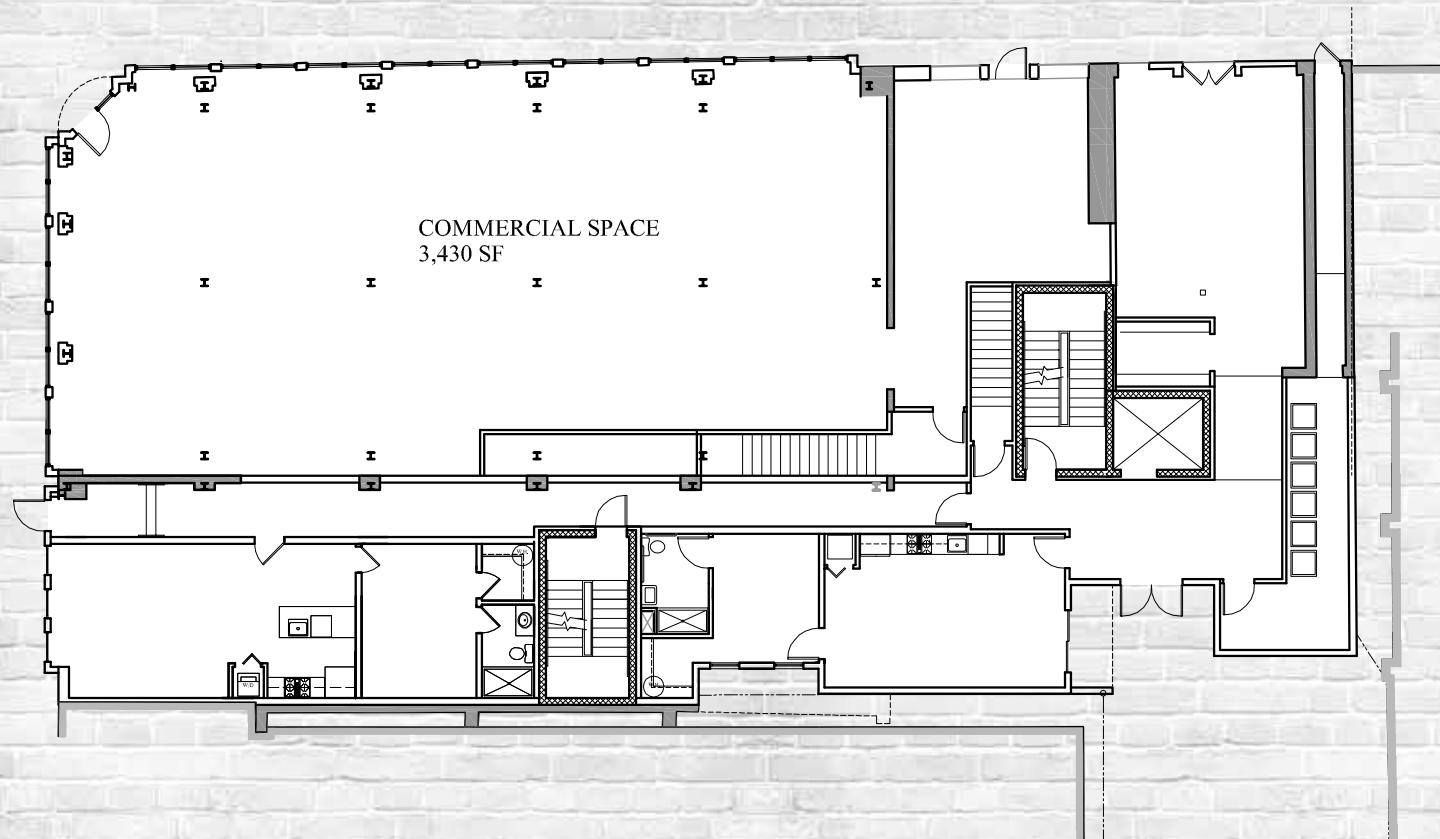


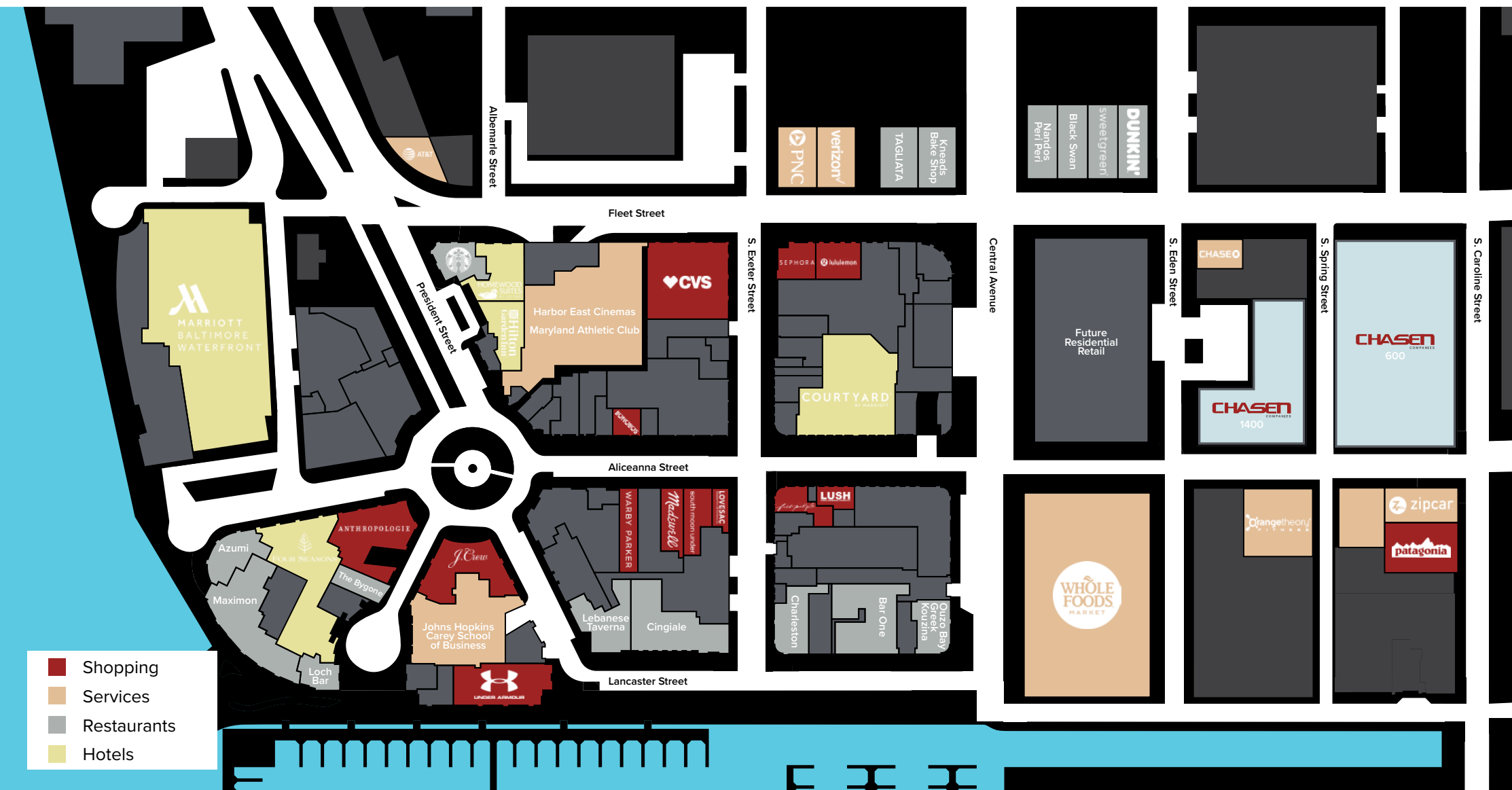
The Chelsea

601 S. Broadway Street

3,500 SF
of street level retail

Located on a prominent corner in the heart of Fell's Point, The Chelsea will be a new four-story luxury boutique apartment complex with **3,500 SF of street level retail** space with basement storage. The revamped property is situated next to the iconic Broadway Market and among the abundant shops, restaurants and services in the Fell's Point neighborhood.





SHOPPING

Anthropologie
Bonobos
CVS
Free People
J.Crew
Lululemon
Lush Cosmetics
Madewell
South Moon Under
Under Armour Brand House
Warby Parker
LoveSac
Sephora
Patagonia

SERVICES

AT&T
Verizon
Whole Foods
Orange Theory
Johns Hopkins Carey School of Business
Harbor East Cinemas
Maryland Athletic Club
Chase Bank
PNC Bank
Zipcar

RESTAURANTS

Starbucks
Lebanese Taverna
Cingiale
Charleston
Bar One
Ouzo Bay Greek Kouzina
Tagliata
Kneads Bake Shop
Nandos Peri Peri
Black Swan
Sweetgreen
Dunkin Donuts
Loch Bar
Maximon
Azumi
The Bygone

HOTELS

Four Seasons
Hilton Garden Inn
Homewood Suites
Marriott Waterfront
Courtyard by Marriott

Representative National Retailers



0.25 Mile Radius

\$139,577
Household Income

3,418
Population

2,603
Residential Units

0.5 Mile Radius

\$128,905
Household Income

9,933
Population

6,459
Residential Units

1.0 Mile Radius

\$135,399
Household Income

38,855
Population

23,904
Residential Units

600 S. Caroline Street | 1400 Aliceanna Street | 601 S. Broadway
Baltimore, MD



Please contact the Retail Advisory Group



Jeff Bach

Managing Director
443 931 3354
jeff.bach@am.jll.com

Bryan Cyphers

Vice President
443 931 3361
bryan.cyphers@am.jll.com

Ana Henrich

Associate
443 451 2619
ana.henrich@am.jll.com

Developed by:

CHASEN
COMPANIES

