

For Lease



Class A office space

- 33,400 - 66,745 r.s.f. of open office space designed for dense users
- The space is in excellent condition and available for immediate occupancy
- High ceilings and lots of natural light
- Parking ratio of 7 per 1,000 s.f.
- Many building amenities including:
 - Three large, connected conference rooms on the first floor
 - Full fitness center with locker rooms and showers
 - Large cafe and lounge area

**13550 Triton Park Boulevard
Louisville, KY 40223**

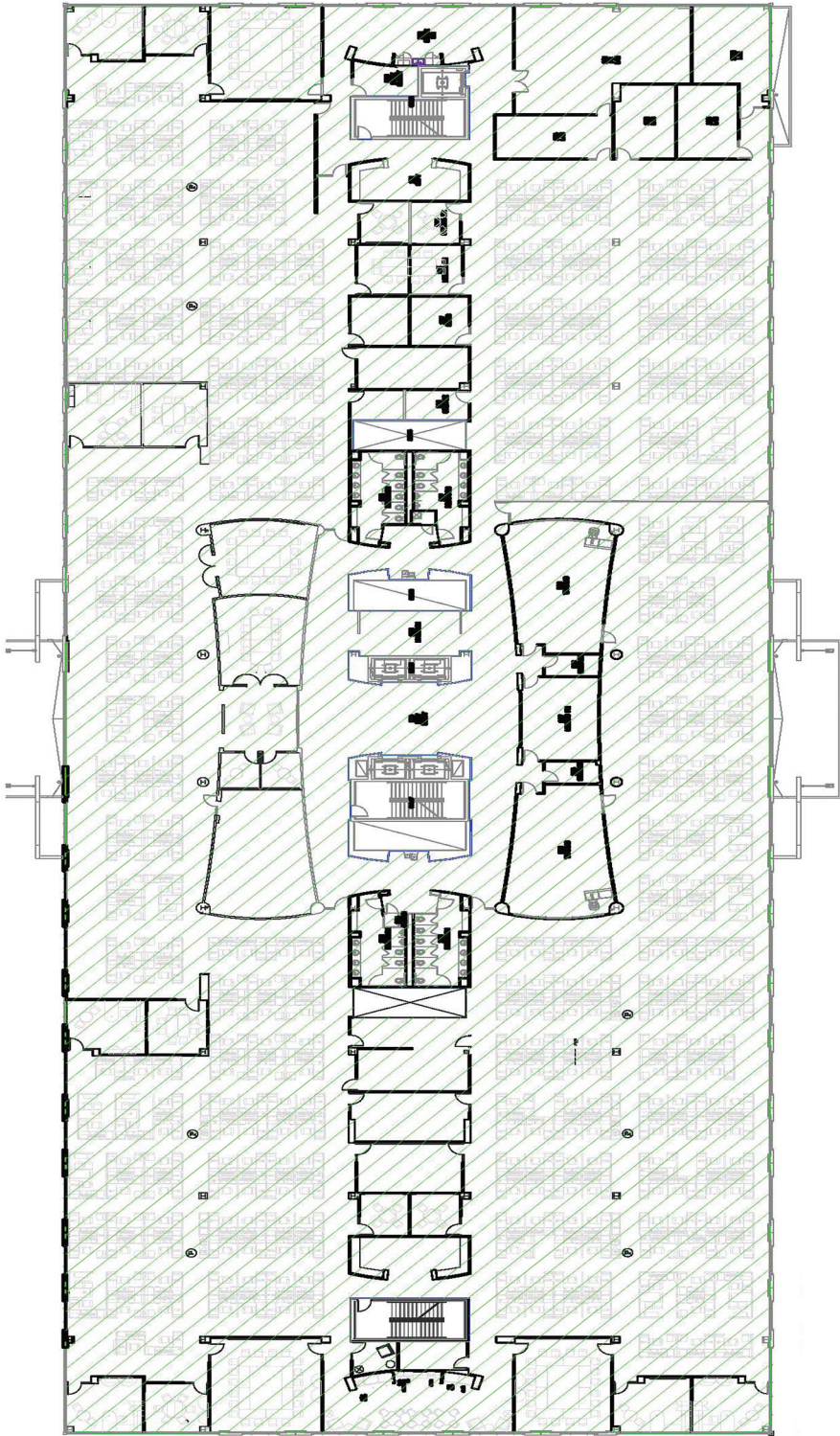
Doug Owen, SIOR
+1 502 394 2516
doug.owen@am.jll.com

Yandell Wood, SIOR
+1 502 394 2518
yandell.wood@am.jll.com

jll.com/louisville



Floor plan



DISCLAIMER

©2020 Jones Lang LaSalle IP, Inc. All rights reserved. All information contained herein is from sources deemed reliable; however, no representation or warranty is made to the accuracy thereof.

