



# For Lease

675 Massachusetts Avenue  
Cambridge, MA

**Full Floor & Half Floor  
Opportunities**

## Multiple suites available at One Central Plaza in Cambridge

Central Plaza is a unique opportunity to be located in the heart of Cambridge, in the dynamic Central Square area. With close proximity to both Harvard and Kendall Squares, the property offers tenants singular tower quality, superior location and access, diverse amenities, MIT, the Charles River, and the Boston skyline.

Central Plaza consists of the fifteen-story One Central Plaza located at 675 Massachusetts Avenue, and the five-story Two Central Plaza located at 130 Bishop Allen Drive.

## Highlights:

**Building Size:** 208,458 SF

**Year Built:** 1967

**Stories:** 15

**Availability:** 4<sup>th</sup> Floor: 7,800 SF  
6<sup>th</sup> Floor: 3,900 SF - 7,800 SF  
9<sup>th</sup> Floor: 1,526 SF

**Available:** Available now

**Parking:** 1.0/1,000 SF

**Amenities:** Central Square T Stop, restaurants, retail, WMCA/YWCA,  
Access to Route 2, Memorial Drive and Storrow Drive



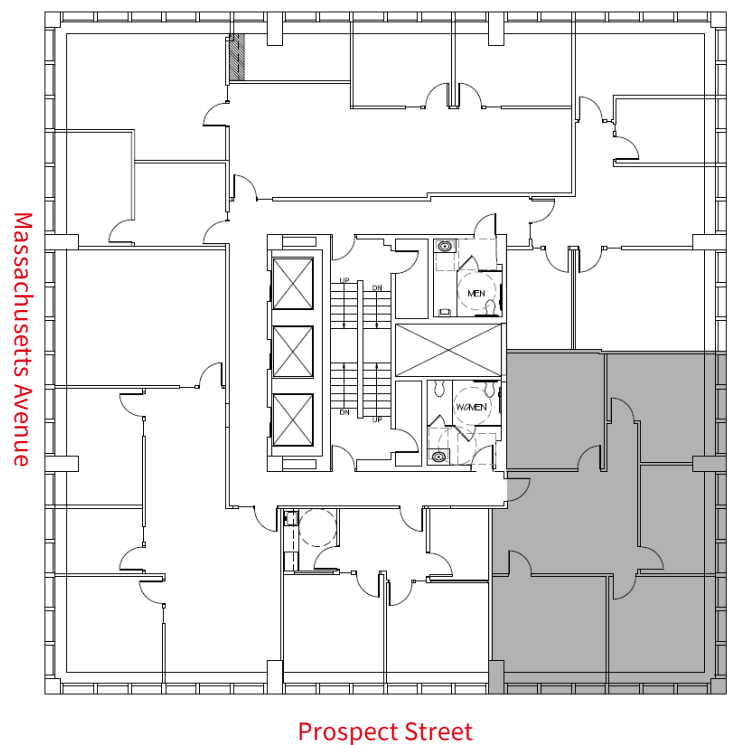
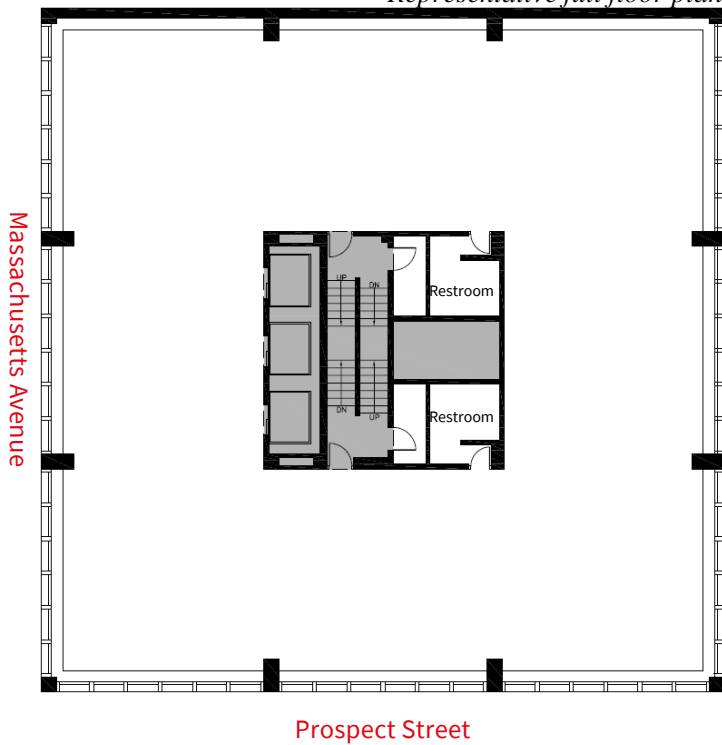


## Available Spaces:

4<sup>th</sup> Floor: **7,800 SF**  
 6<sup>th</sup> Floor: **3,900 SF – 7,800 SF**

9<sup>th</sup> Floor: **1,526 SF**

*\*Representative full floor plan*



John Osten  
 617 531 4107  
[John.Osten@am.jll.com](mailto:John.Osten@am.jll.com)

Molly Heath  
 617 316 6489  
[Molly.Heath@am.jll.com](mailto:Molly.Heath@am.jll.com)

Pete Bekarian  
 617 531 4195  
[Peter.Bekarian@am.jll.com](mailto:Peter.Bekarian@am.jll.com)

Maggie Dore  
 617 531 4196  
[Maggie.Dore@am.jll.com](mailto:Maggie.Dore@am.jll.com)

