

The Meadows

1900 Hempstead Turnpike, East Meadow, NY



For Lease

Regency
Centers.



PROPERTY SPECIFICATIONS

ADDRESS **The Meadows**
1900 Hempstead Turnpike, East Meadow, NY

AVAILABILITIES Office / Medical Space

2nd floor: 17, 500 SF
3rd floor: 17, 500 SF
4th floor: 17, 500 SF
5th floor: 17, 500 SF

Total: 70,000 Square Feet

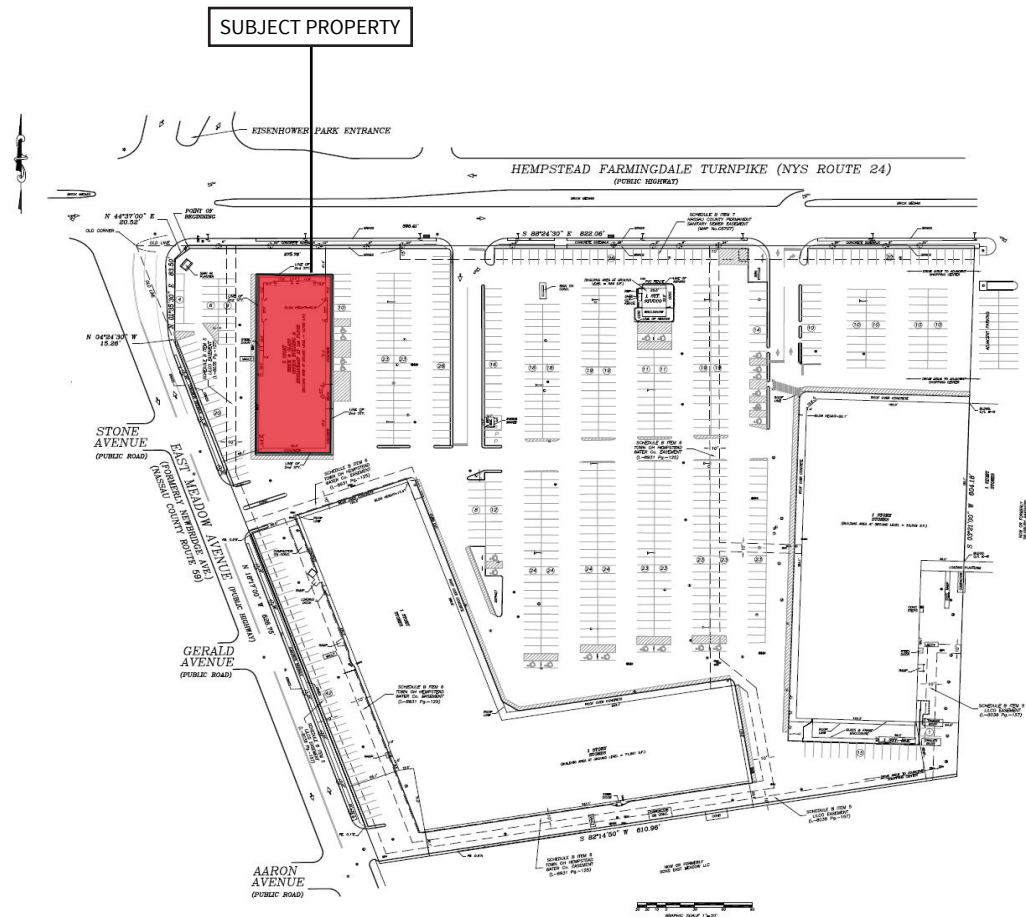
POSSESSION Arranged

RENTAL RATE \$28.50 PSF

- BUILDING HIGHLIGHTS**
- Building within a building opportunity
 - New strong institutional ownership in place
 - Efficient floor plates
 - Planned improvements to include new façade, mechanicals, and common areas
 - Building signage available
 - Sewer connection on-site

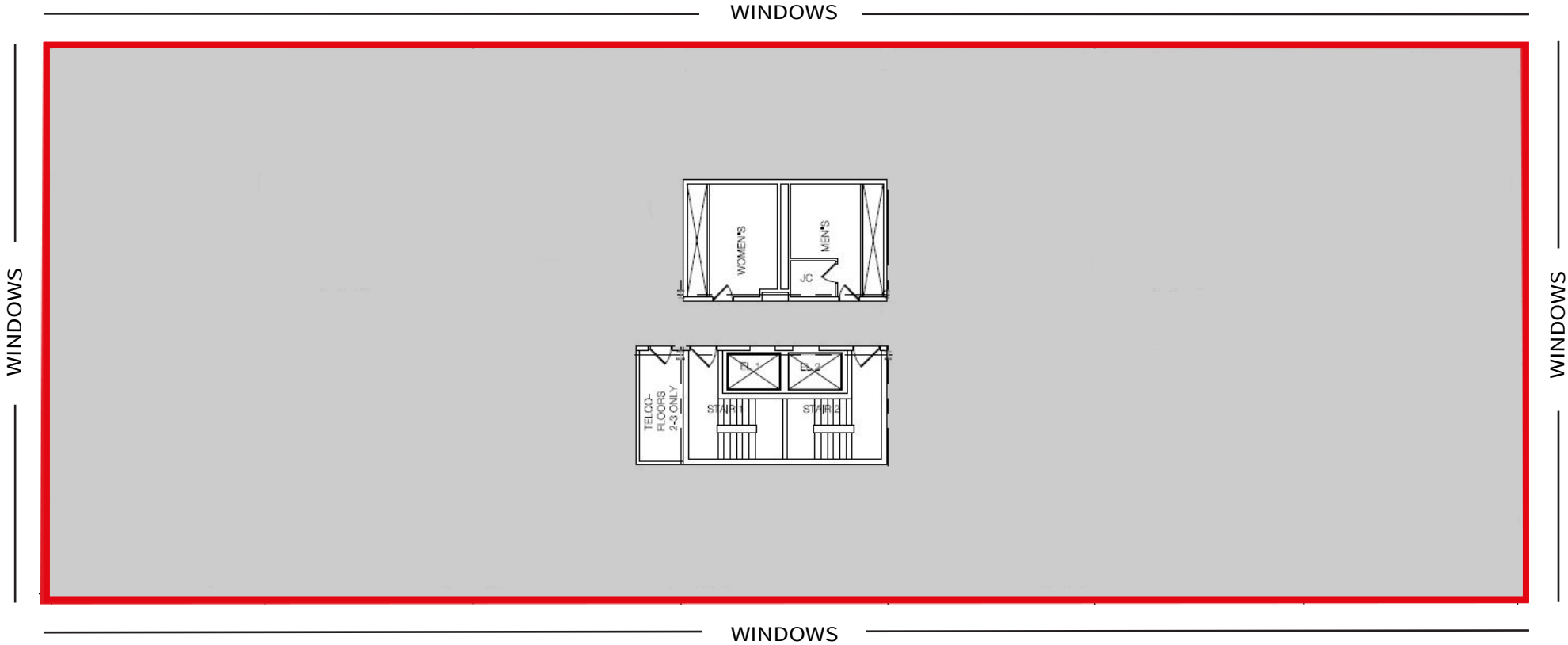
- LOCATION**
- Connected to The Meadows retail center which includes Stew Leonard's, Lidl, Burger City, Staples
 - Close proximity to the Meadowbrook Parkway (Exit M5)

SITE PLAN



THE MEADOWS - 1900 HEMPSTEAD TPKE, EAST MEADOW

FLOOR PLATE: 17,500 SF





CONTACTS

Joseph Lopresti
Executive Vice President
+1 631 962 7384
joseph.lopresti@jll.com

Kyle Crennan
Managing Director
+1 631 962 2896
kyle.crennan@jll.com

Brian Weigold
Associate
+1 631 962 2895
brian.weigold@jll.com



Jones Lang LaSalle Brokerage, Inc.

Although information has been obtained from sources deemed reliable, neither Owner nor JLL makes any guarantees, warranties or representations, express or implied, as to the completeness or accuracy as to the information contained herein. Any projections, opinions, assumptions or estimates used are for example only. There may be differences between projected and actual results, and those differences may be material. The Property may be withdrawn without notice. Neither Owner nor JLL accepts any liability for any loss or damage suffered by any party resulting from reliance on this information. If the recipient of this information has signed a confidentiality agreement regarding this matter, this information is subject to the terms of that agreement. © 2023 Jones Lang LaSalle IP, Inc. All rights reserved.