

# 1111 MISSION STREET

SAN FRANCISCO

5,600 SF IMPROVED RESTAURANT SPACE FOR LEASE



# LOCALIZATION

## THE MARKET - SOUTH OF MARKET





- Located in the heart of San Francisco’s SoMa neighborhood, this vibrant neighborhood not only offers high population density and excellent transit but is filled with restaurants, café’s, bars and hotels.
- SoMa is rapidly evolving as areas are being redeveloped into office parks, luxurious condos, convention centers, and residential areas are being revitalized.
- The approved Central SOMA Plan will add significant density and vitality to the area with projections that include 33,000 new jobs, 8,300 housing units, and \$2 billion in public transportation improvement.
- The increasing presence of corporate headquarters in the neighborhood draw an impressive daytime population of 78,345 people.

## DEMOGRAPHICS

10 MINUTE WALK TIME

 **\$806,481** median home value

 **42,392** total employees

 **40,365** population

 **2,838** total businesses

Source: Esri, 2018

# PROPERTY DETAILS

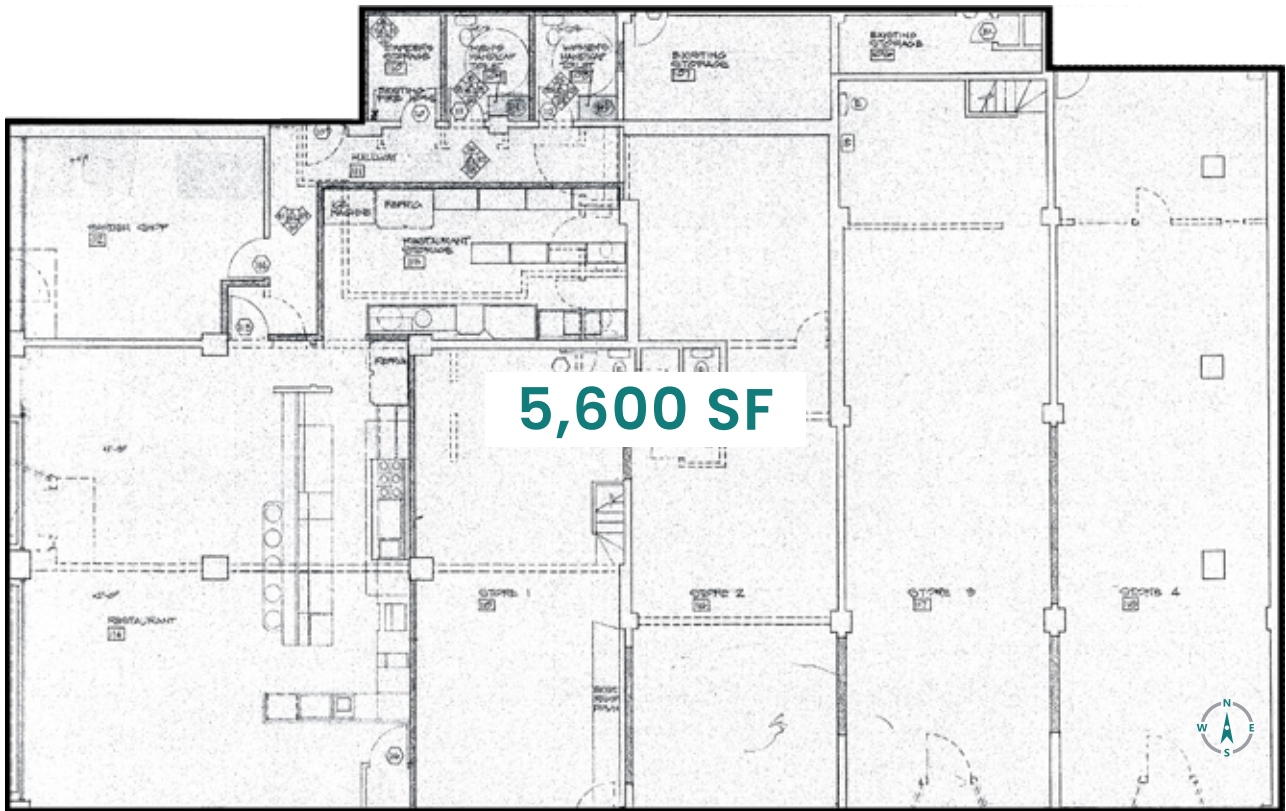
- ±5,600 sf. available for lease
- Fully improved restaurant space with existing FF&E
- Over 70 ft. of frontage on Mission Street
- Newly renovated rooms and lobby in progress
- Hotel re-brand and rename in progress



## FLOORPLAN & NEARBY RETAILERS



7TH STREET



MISSION STREET

# 1111 MISSION STREET

SAN FRANCISCO

5,600 SF IMPROVED RESTAURANT SPACE FOR LEASE



## Ben Lazzareschi

Managing Director  
JLL Retail Brokerage Services  
+1 415 228 3070  
ben.lazzareschi@am.jll.com  
RE Lic # 01414579

## Justin Choi

Associate  
JLL Retail Brokerage Services  
+1 925 858 6041  
justin.choi@am.jll.com  
RE Lic # 02107928

## David Kessler

Associate  
JLL Retail Brokerage Services  
+1 925 478 0386  
david.kessler@am.jll.com  
RE Lic # 02112097