



90 Nassau Street



For Lease

Premier Princeton Location

- Located in the heart of Princeton's Central Business District
- Stands at the corner of Nassau and Witherspoon Street
- Directly across the street from the main gates of Princeton University
- Office space available on 2nd and 3rd floor
- Views of Nassau Street and Princeton University's main entrance
- Historic building with modern conveniences and communication
- Easy walk to restaurants, shopping and parking

7,147 RSF

90 Nassau Street,
Princeton, NJ

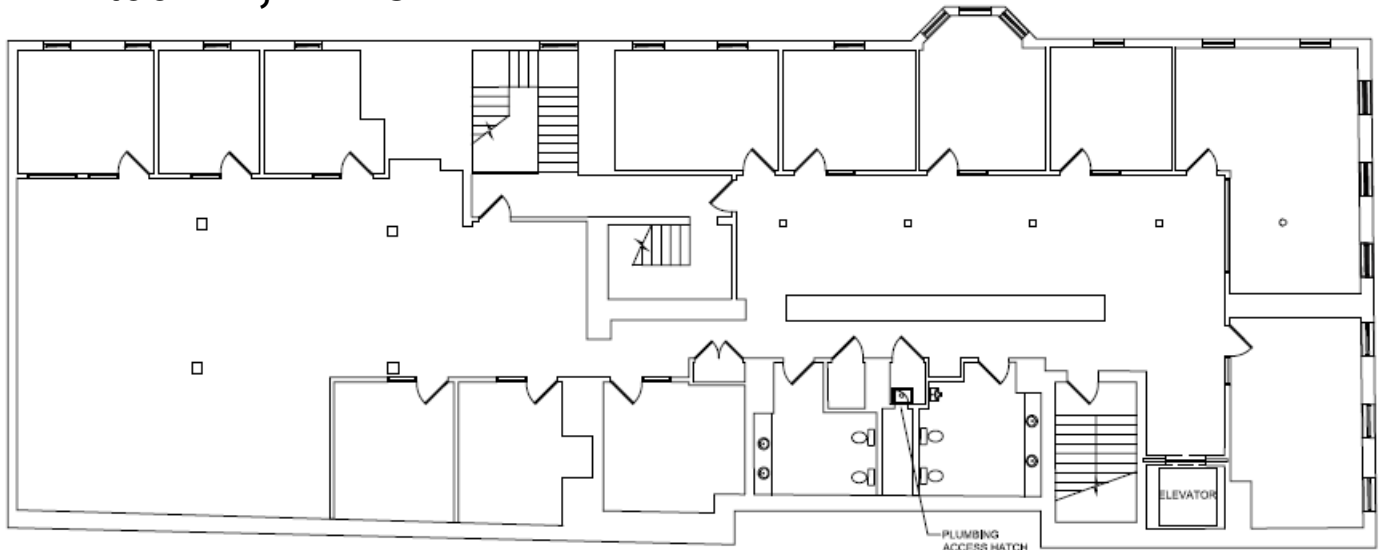
Thomas Romano

+1 609 658 1589

thomas.romano@am.jll.com



2nd Floor – 7,147 RSF

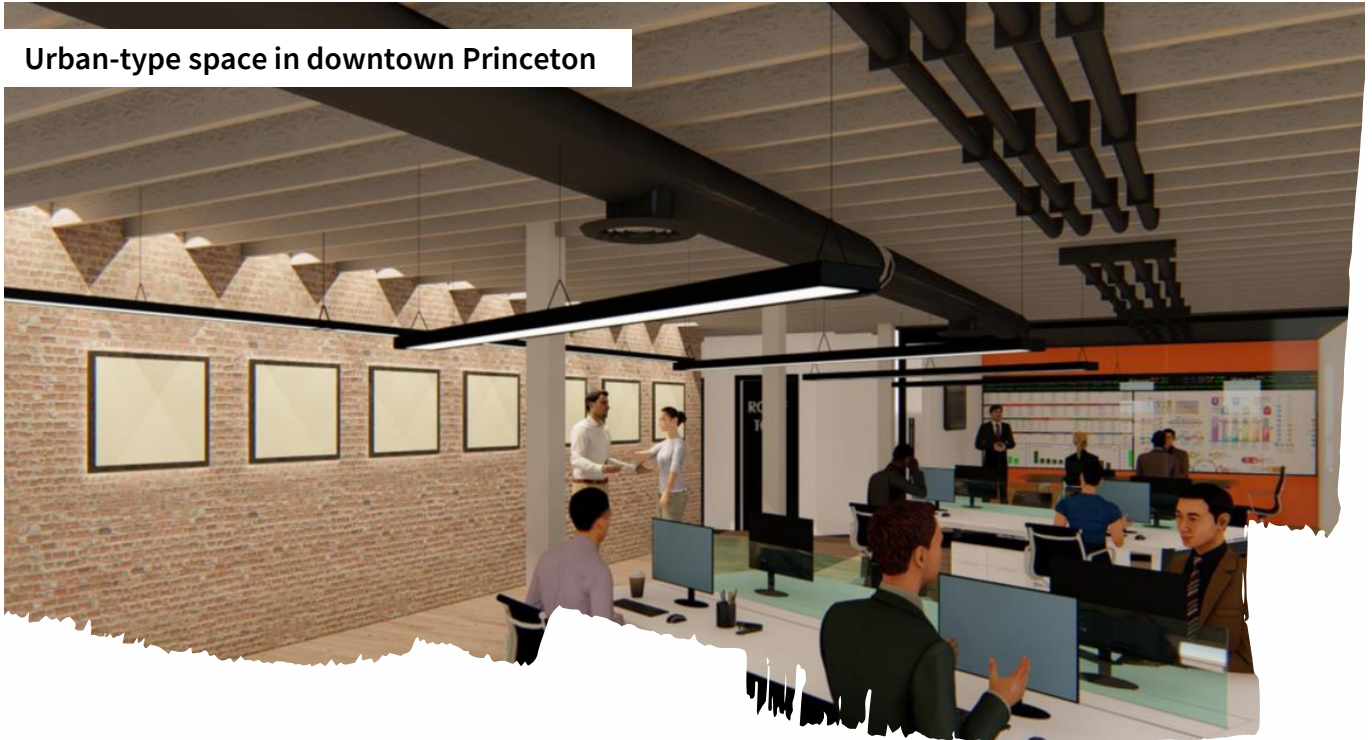


Rendering of proposed roof deck off the 3rd floor



Create Your Culture...

Urban-type space in downtown Princeton



Renderings featuring exposed brick and exposed wood truss ceilings

