



For Sublease

Sublease Details

- 44,300 SF immediately available
 - 5th floor – 22,150 SF
 - 6th floor – 22,150 SF
- Term through mid-2026
- Furniture available
- Covered parking
- City views and excellent highway access
- Close proximity to food and retail
- 24-hour security

4 Allegheny Center Pittsburgh, PA 15212

Jordan Phillippi
jordan.phillippi@am.jll.com

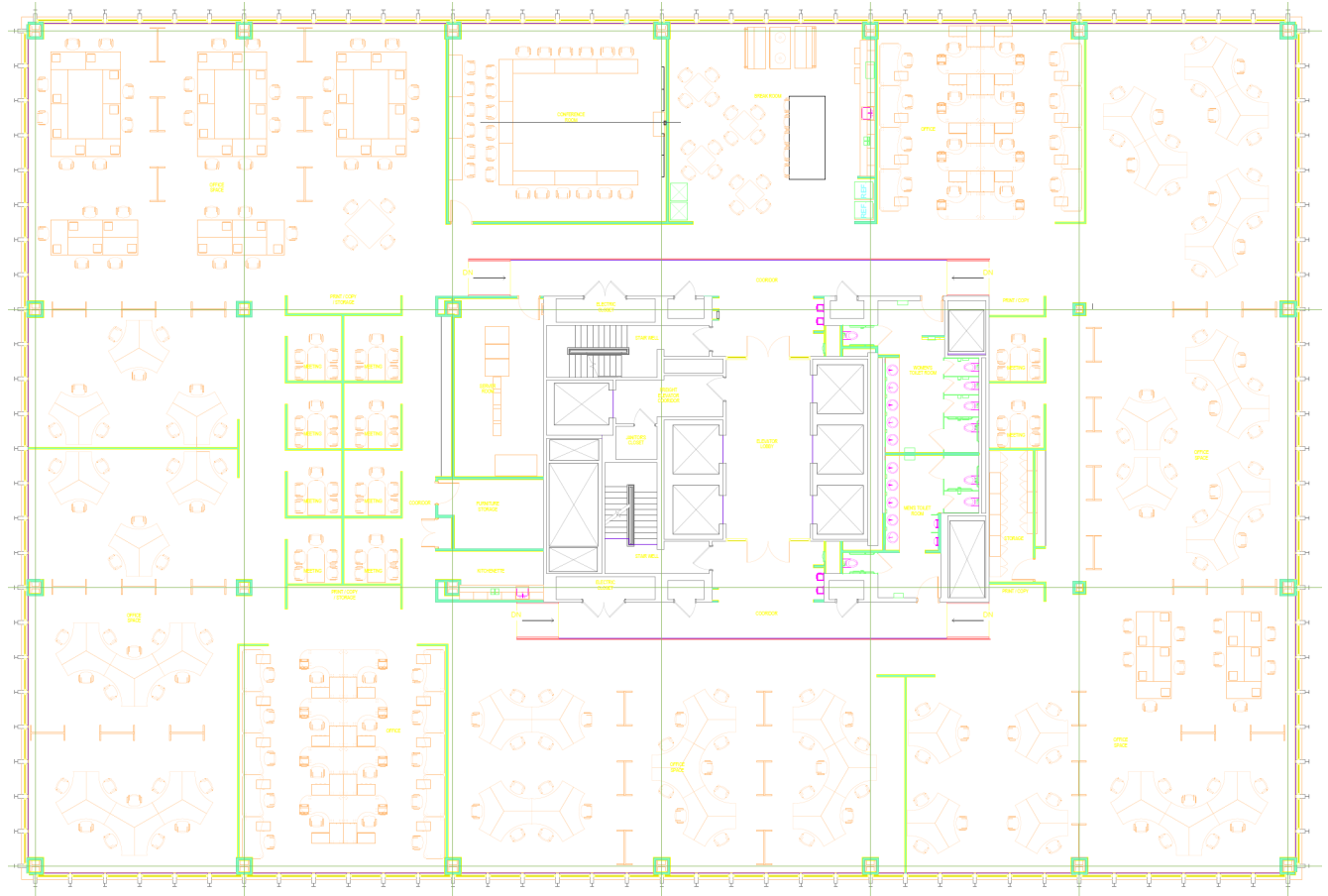
Katie Battaglia
katie.battaglia@am.jll.com

Jon Sampson
jonathan.sampson@am.jll.com

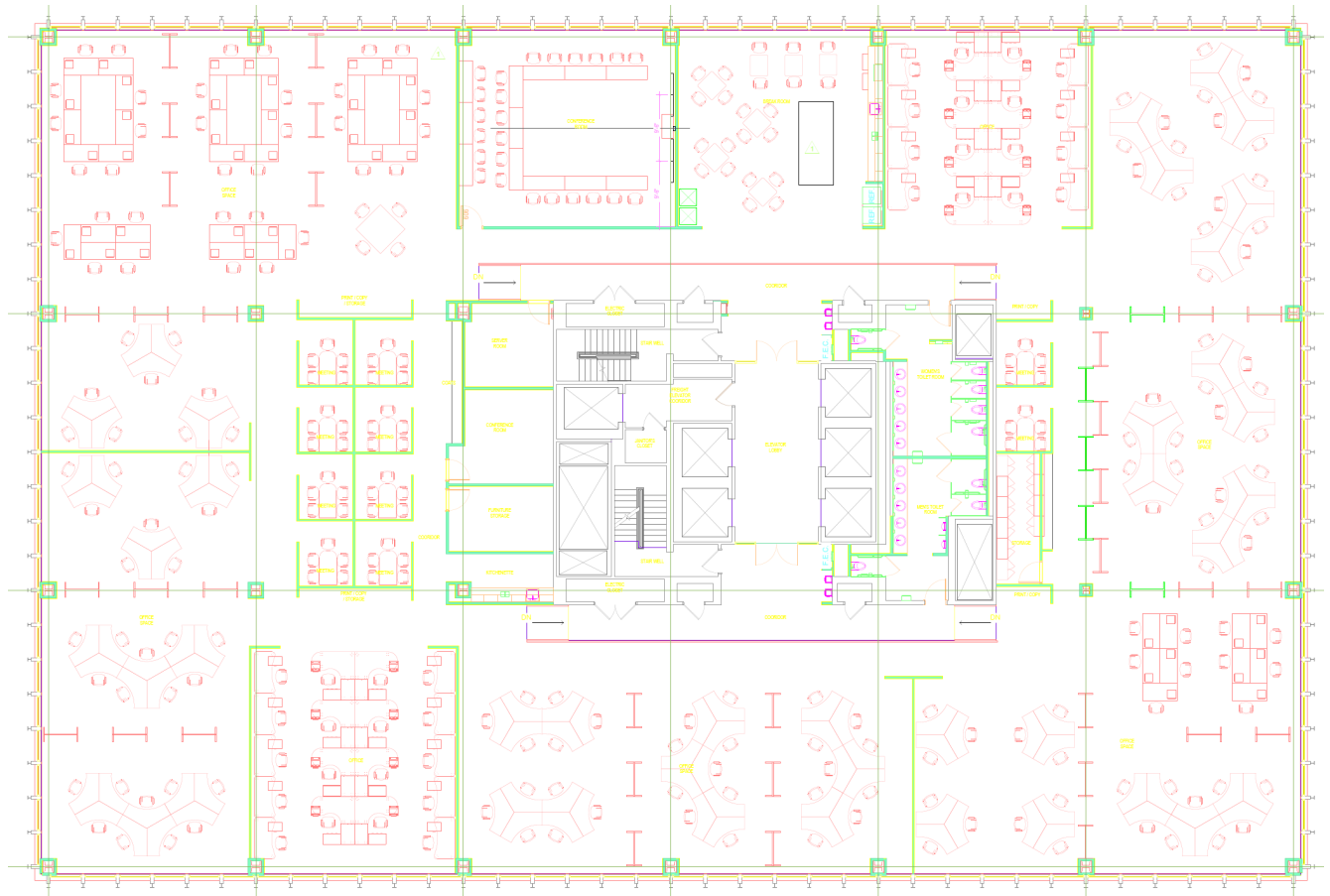
+1 412 208 1400
Jones Lang LaSalle Brokerage, Inc.

Although information has been obtained from sources deemed reliable, neither Owner nor JLL makes any guarantees, warranties or representations, express or implied, as to the completeness or accuracy as to the information contained herein. Any projections, opinions, assumptions or estimates used are for example only. There may be differences between projected and actual results, and those differences may be material. The Property may be withdrawn without notice. Neither Owner nor JLL accepts any liability for any loss or damage suffered by any party resulting from reliance on this information. If the recipient of this information has signed a confidentiality agreement regarding this matter, this information is subject to the terms of that agreement. ©2021 Jones Lang LaSalle IP, Inc. All rights reserved.





5th floor- 22,150 SF



6th floor- 22,150 SF