

# For Lease

## Southcenter West Business Park, Building A

- 15,630 SF total
- 1,076 SF office
- Five (5) dock-high doors
- Two (2) rail doors
- Energy efficient lighting
- 24' x 43' column spacing
- Immediate access to I-5, I-405, & W Valley Hwy
- Frontage onto Andover Park W
- Available March 1, 2021
- Contact brokers for rates

1187 Andover Park W  
Tukwila, WA

**Chris Spofford**

+1 425 890 6961

[Chris.Spofford@am.jll.com](mailto:Chris.Spofford@am.jll.com)

**David Cahill**

+1 206 930 5599

[David.Cahill@am.jll.com](mailto:David.Cahill@am.jll.com)

Jones Lang LaSalle Brokerage, Inc.

### DISCLAIMER

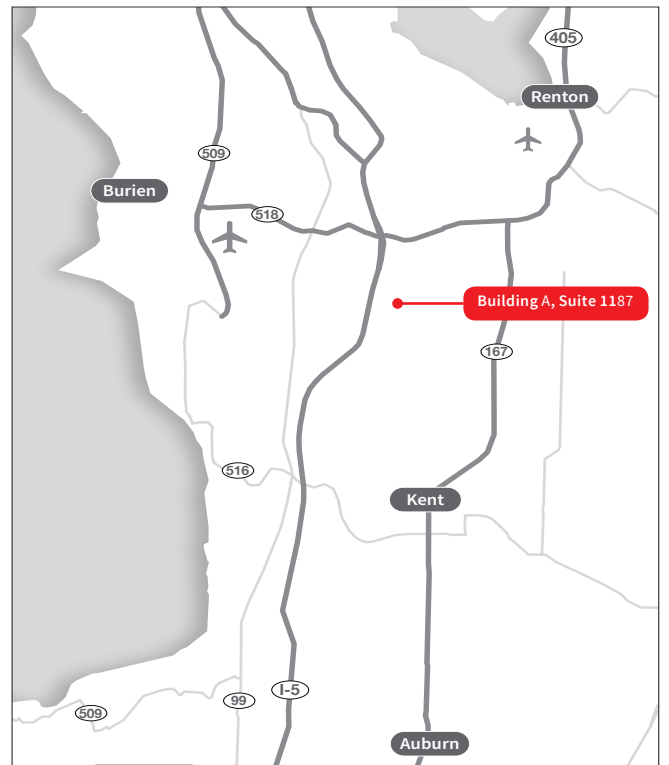
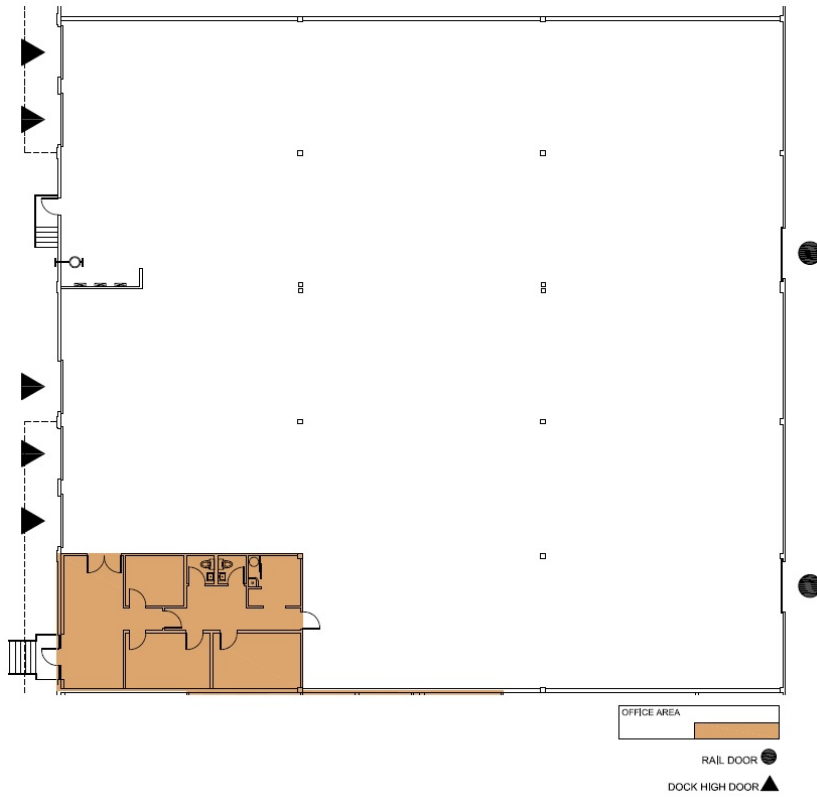
Although information has been obtained from sources deemed reliable, Owner, Jones Lang LaSalle, and/or their representatives, brokers or agents make no guarantees as to the accuracy of the information contained herein, and offer the Property without express or implied warranties of any kind. The Property may be withdrawn without notice. If the recipient of this information has signed a confidentiality agreement regarding this matter, this information is subject to the terms of that agreement. ©2021. Jones Lang LaSalle. All rights reserved.



# For Lease



Southcenter West Business Park, Building A | 15,630 SF



#### DISCLAIMER

Although information has been obtained from sources deemed reliable, Owner, Jones Lang LaSalle, and/or their representatives, brokers or agents make no guarantees as to the accuracy of the information contained herein, and offer the Property without express or implied warranties of any kind. The Property may be withdrawn without notice. If the recipient of this information has signed a confidentiality agreement regarding this matter, this information is subject to the terms of that agreement. ©2021. Jones Lang LaSalle. All rights reserved.

