

## Nova Place, Pittsburgh's Largest Corporate Tech Campus:

New Renovations,  
New Amenities,  
New Tenants

### CONTACT:

Jeremy Z. Kronman, CCIM, SIOR  
Vice Chairman  
412.394.9848  
jeremy.kronman@cbre.com

Andrew B. Miller, CCIM  
Senior Vice President  
412.394.9807  
andrew.miller@cbre.com

[novaplace.com](http://novaplace.com)

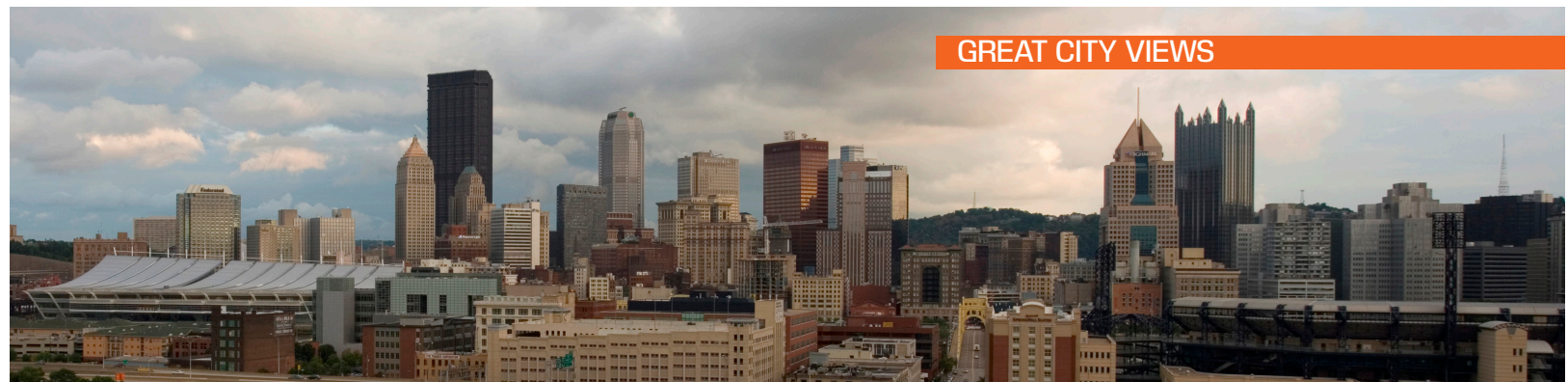


**CBRE**

© 2020 CBRE, Inc. This information has been obtained from sources believed reliable. We have not verified it and make no guarantee, warranty or representation about it. Any projections, opinions, assumptions or estimates used are for example only and do not represent the current or future performance of the property. You and your advisors should conduct a careful, independent investigation of the property to determine to your satisfaction the suitability of the property for your needs.

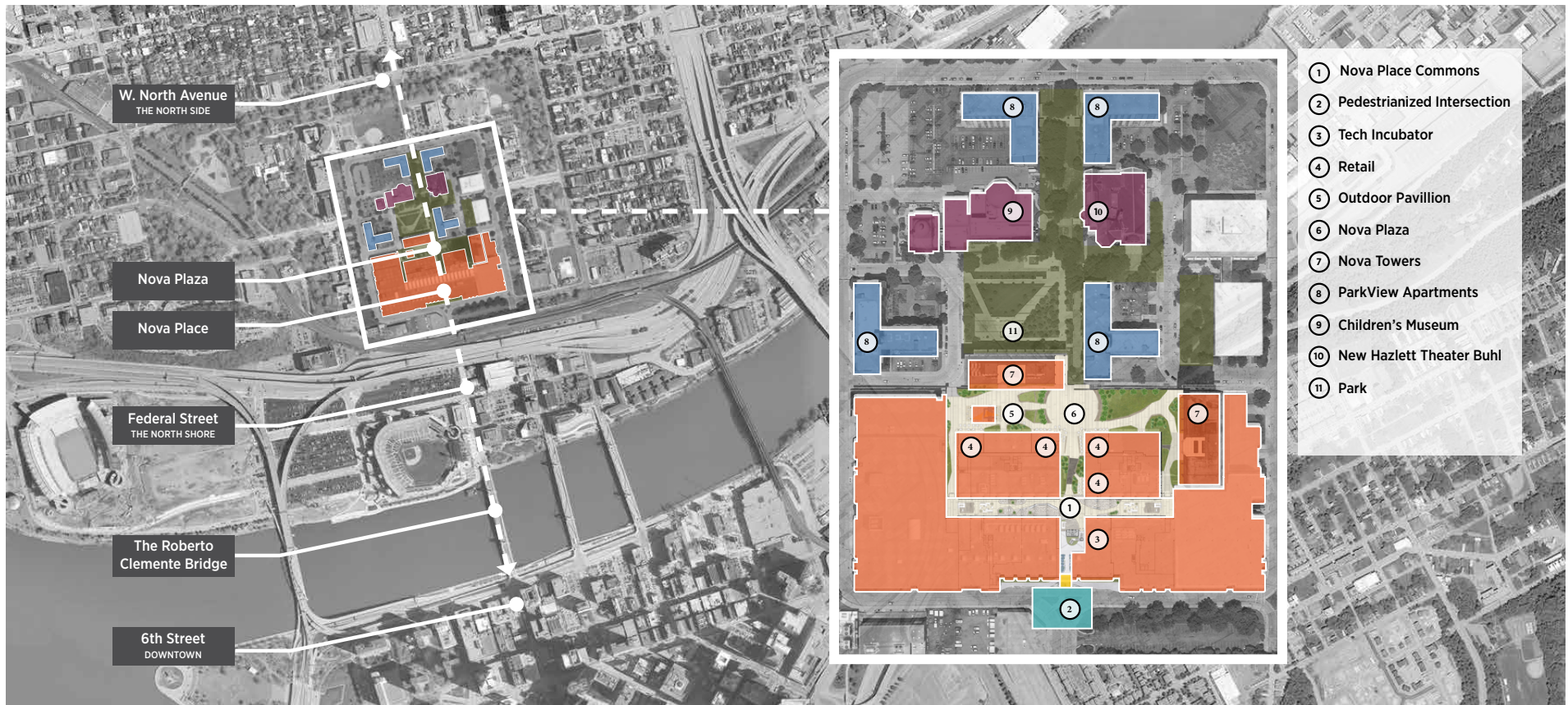


# NOVAPlace SITE PLAN





# NOVAPlace SITE MAP



# NOVAPlace HIGHLIGHTS

## FITNESS



## VISIBILITY



## PLAZA



## PROPERTY FEATURES:

- Exceptional Parking, Highway Access, Public Transit, and Walk-Ability: 14 Port Authority bus routes stop within 2 blocks, Plus T Nearby
- Commonplace Coffee, Eco Bistro Restaurant, City Fresh Pasta and Federal Galley!
- New Brooke Rockwell Salon
- New Office Tenants Include Live Nation, Confluence Technologies, Innovation Works, Alloy 26, Matrix Solutions, Microbac Laboratories, Newton Consulting, MetLife, Bohler Engineering, Oracle and Design Group
- Alloy 26 Co-Working and Collaborative Space
- Union Fitness Center
- New Shared Conference Rooms with Tiered Auditorium for 150+ plus conventional conference center
- Exterior Plaza Renovations Complete
- New Lobbies & Mechanical Systems in Tower One and Two
- New Signage & Way Finding
- Extensive Garage Renovations Complete to the 2,700+ Covered and Integral Parking Garage
- Unparalleled Fiber Connectivity with Wired Platinum Certification
- Overlapping, Redundant, Electrical Grids
- On-Site Property Management, Maintenance, and 24 Hour Manned Security
- Great Views and Property Visibility



CBRE

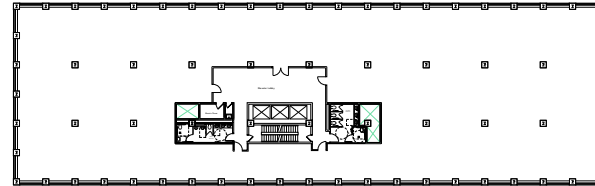


# NOVAPlace OFFICE



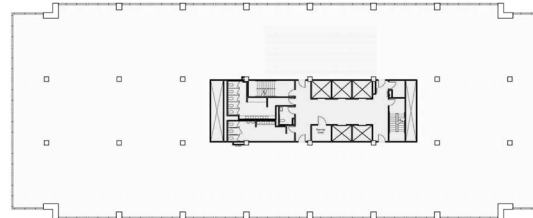
## NOVA TOWER 1:

- Various Suites Available (95% Occupied)
- Pre-Built Suites Ready For Immediate Occupancy
- New Lobby, Common Areas, and Mechanical Systems



## NOVA TOWER 2:

- Up To 95,000 Square Feet Available
- New Lobby, Common Areas, and Mechanical Systems



## CONCOURSE:

- Up to 225,000 Square Feet of Large Floor Plate Space Available
- Co-tenancy with PNC Bank, AT&T, and Expedient
- New Common Areas

## CONTACT:

Jeremy Z. Kronman, CCIM, SIOR  
Vice Chairman  
412.394.9848  
jeremy.kronman@cbre.com

Andrew B. Miller, CCIM  
Senior Vice President  
412.394.9807  
andrew.miller@cbre.com

© 2021 CBRE, Inc. This information has been obtained from sources believed reliable. We have not verified it and make no guarantee, warranty or representation about it. Any projections, opinions, assumptions or estimates used are for example only and do not represent the current or future performance of the property. You and your advisors should conduct a careful, independent investigation of the property to determine to your satisfaction the suitability of the property for your needs.