

**FOR SUBLEASE**

# PARK PLACE

1655 NORTH FORT MYER DRIVE  
ARLINGTON, VA 22209



## FOR SUBLEASE

### SPACE FEATURES:

- + 4,170 RSF - divisible to 1,500 RSF
- + Rate: \$33.00/RSF
- + Term through May 2018
- + Great light and window line
- + Very efficient space
- + Access to balcony
- + Unobstructed views of D.C., monuments, and the Potomac River
- + Plug N Play
- + Flexible sublease

### BUILDING FEATURES:

- + New lobby renovations
- + LEED Gold certified
- + On-site cafe
- + 1.5 blocks to Rosslyn Metro station (Orange/Blue/Silver lines)



## CONTACT US

### BRIAN WOOD

First Vice President  
+1 202 585 5690  
brian.wood@cbre.com

### COLIN FAY

Associate  
+1 202 585 5679  
colin.fay@cbre.com

[www.cbre.com/dc](http://www.cbre.com/dc)

**CBRE**

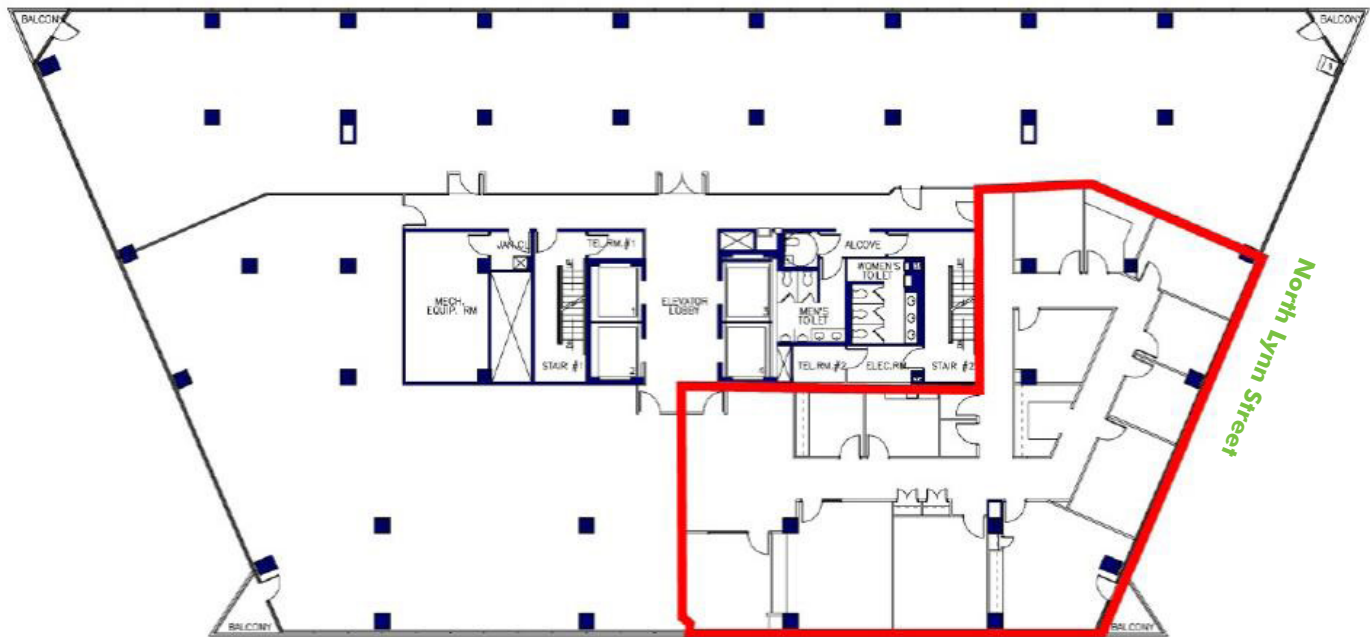
# FOR SUBLEASE PARK PLACE

1655  
NORTH FORT MYER DRIVE  
Arlington, VA 22209

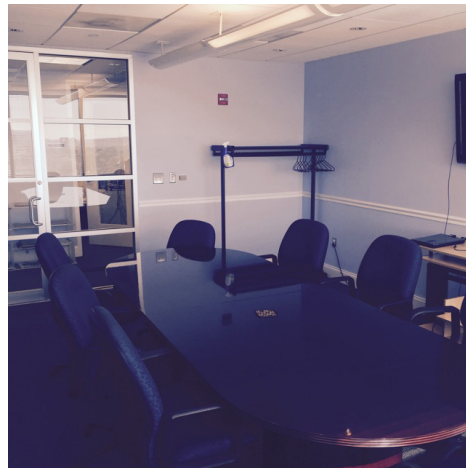
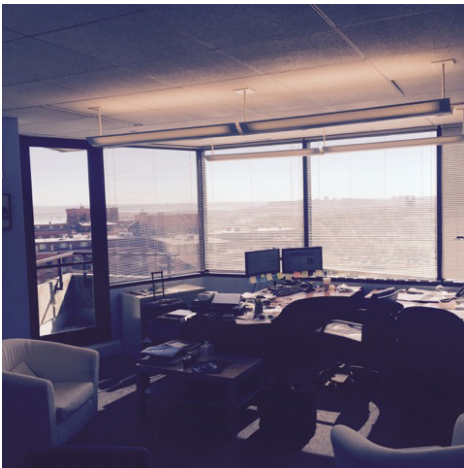


## 11<sup>TH</sup> FLOOR PLAN

17th Street North



North Lynn Street



© 2015 CBRE, Inc. This information has been obtained from sources believed reliable. We have not verified it and make no guarantee, warranty or representation about it. Any projections, opinions, assumptions or estimates used are for example only and do not represent the current or future performance of the property. You and your advisors should conduct a careful, independent investigation of the property to determine to your satisfaction the suitability of the property for your needs.

Photos herein are the property of their respective owners and use of these images without the express written consent of the owner is prohibited.

[www.cbre.com/dc](http://www.cbre.com/dc)

**CBRE**