



The Kresge Building

801-807 N Market Street
Wilmington, DE

17,000_{SF}

renovated commercial space available for lease

The Kresge Building



RENOVATED

Full building renovation underway to include 17,000 SF of commercial space below luxury apartments



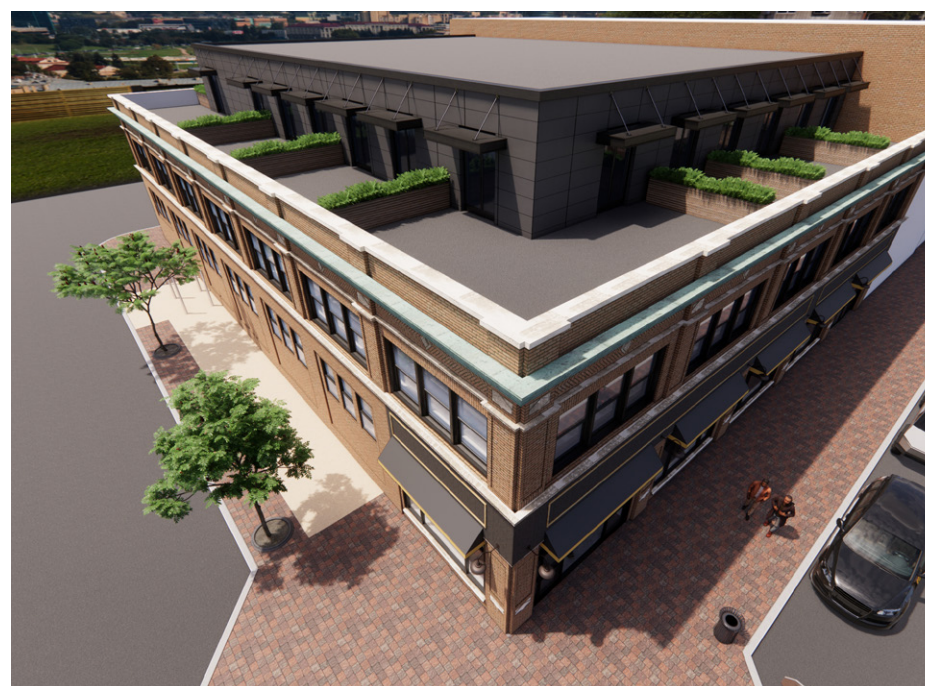
HISTORIC

Project to include preservation of Kresge Building historic elements, with fully white-boxed commercial space

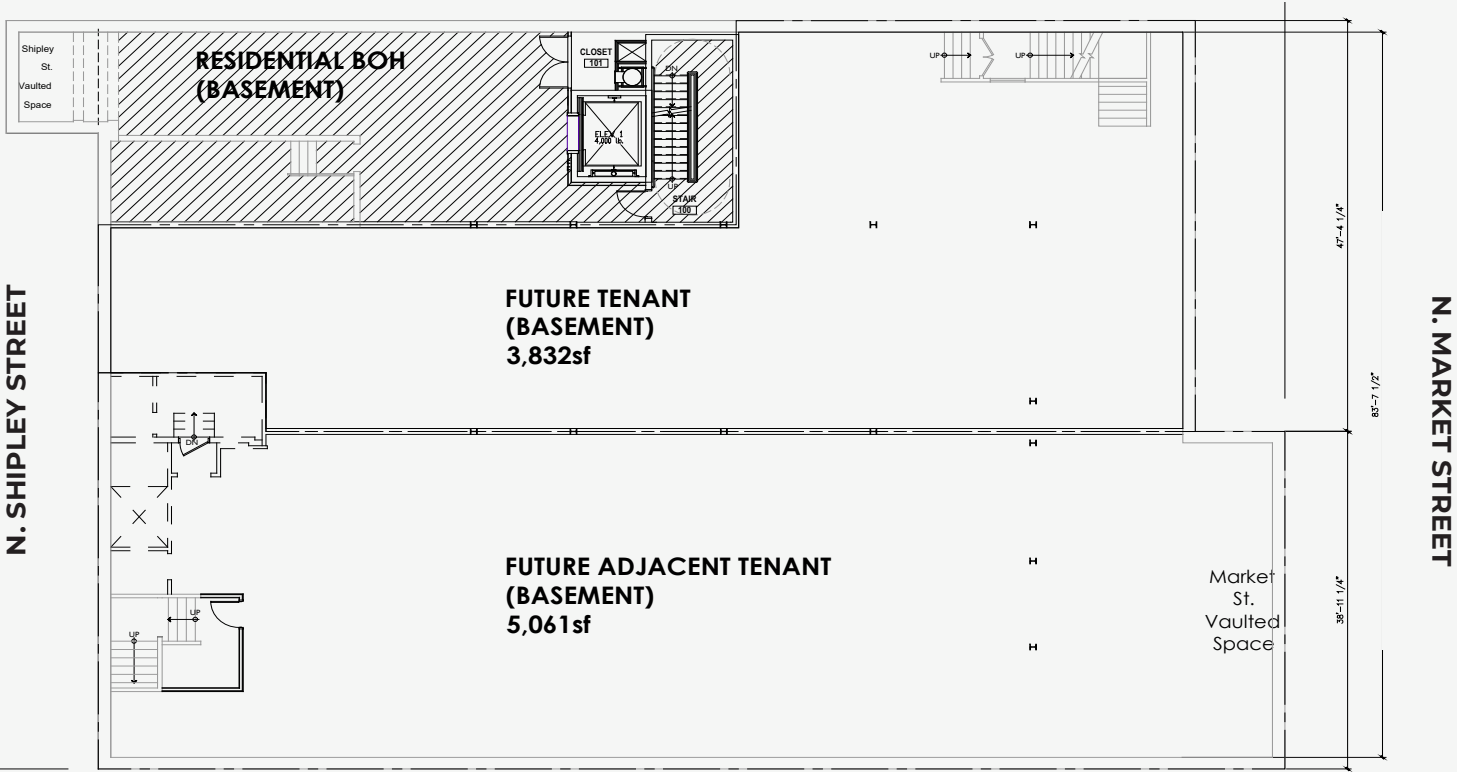
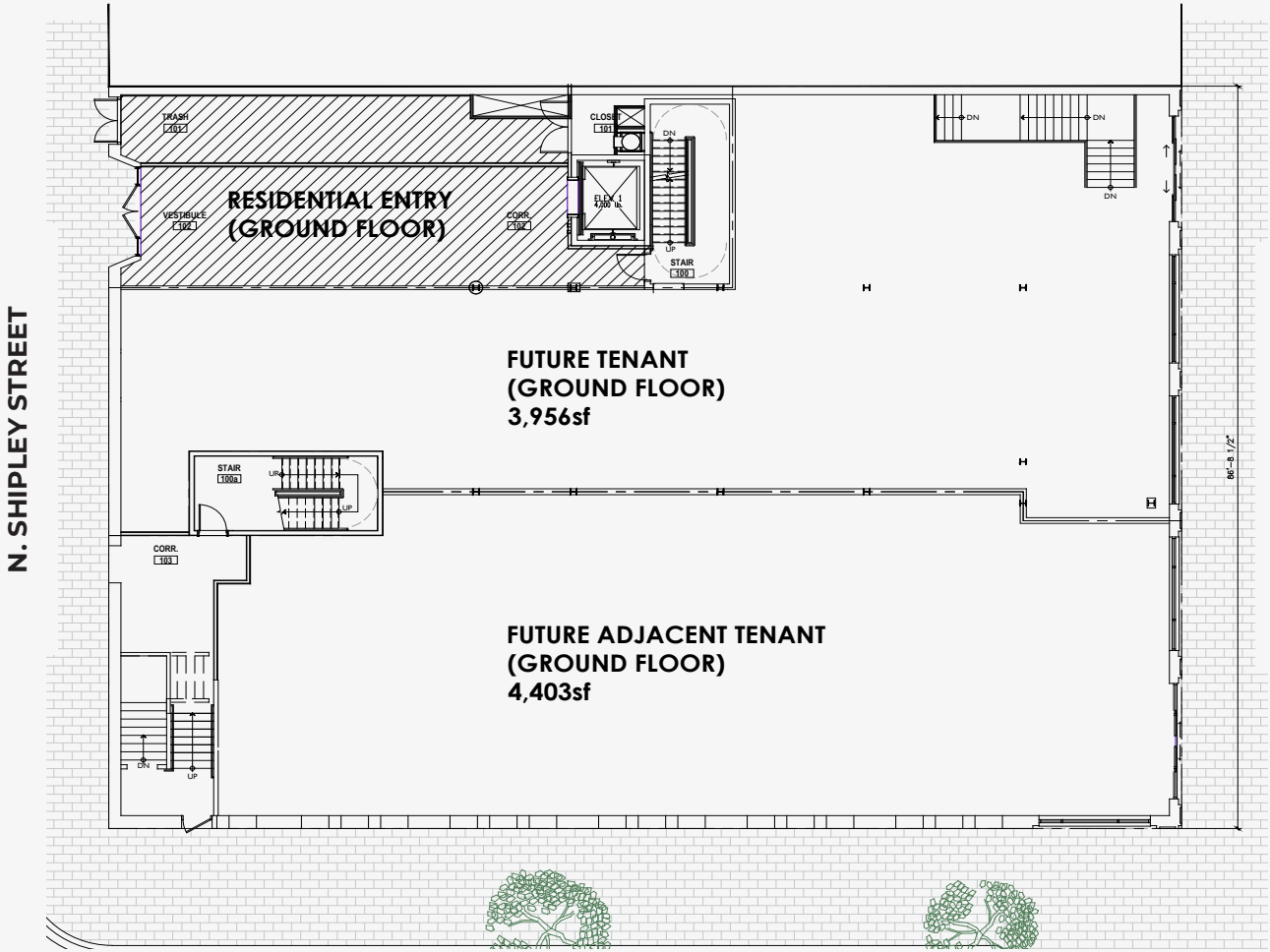


VISIBLE

Highly visible location along Wilmington's up and coming downtown retail corridor



Availabilities



Street Level

8,329 SF (DIVISIBLE TO 3,956 SF)

Lower Level

8,887 SF (DIVISIBLE TO 3,823 SF)

Amenities



Prime Wilmington Location



0.6 MILE

to SEPTA
Wilmington Station



6 MILES

to New Castle
Airport



20 MILES

to Philadelphia
International Airport



▽ About the owner:

9th Street Development Company (9SDC) is a team of creative, driven developers focused on unifying and elevating the communities of Wilmington and Northern DE. They focus on the ever-changing wants and needs of its community members to ensure everyone is empowered within their homes. 9SDC specializes in multi-family, mixed-use, historic renovations, and ground up construction. Their unique development strategy supports and encourages new businesses and entrepreneurship, rather than leaving vacant storefronts.

For leasing information, contact:

Blaise Fletcher

+1 302 356 2861
blaise.fletcher@am.jll.com

Jamie Vari

+1 302 356 2862
jamie.vari@am.jll.com

Jones Lang LaSalle Brokerage, Inc.

1011 Centre Road, Suite 117
Wilmington, DE 19805
+1 302 356 2858

Although information has been obtained from sources deemed reliable, neither Owner nor JLL makes any guarantees, warranties or representations, express or implied, as to the completeness or accuracy as to the information contained herein. Any projections, opinions, assumptions or estimates used are for example only. There may be differences between projected and actual results, and those differences may be material. The Property may be withdrawn without notice. Neither Owner nor JLL accepts any liability for any loss or damage suffered by any party resulting from reliance on this information. If the recipient of this information has signed a confidentiality agreement regarding this matter, this information is subject to the terms of that agreement. ©2022. Jones Lang LaSalle IP, Inc. All rights reserved.