



For Lease

East End Office Space Close to
Pittsburgh's Top Universities

5528 Walnut St.
Pittsburgh, PA 15232

-2,556 RSF on the second floor

-1,318 RSF on the third floor

-Nice mix of open collaborative space and private offices

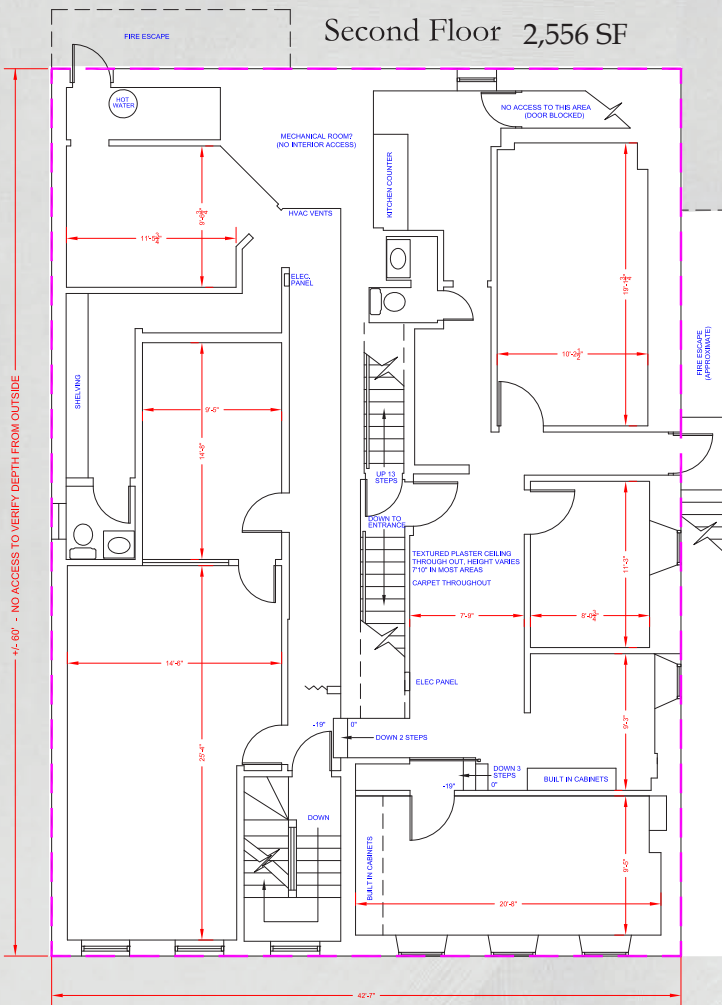
-Close proximity to premier medical institutions and hospitals

-Prominent address on Walnut St.

Jesse Ainsman
+1 412 208 8414

jesse.ainsman@am.jll.com

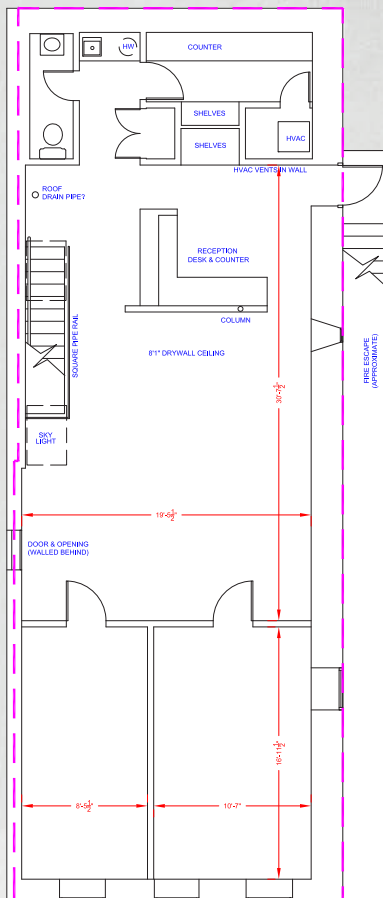
5528 Walnut St.
Pittsburgh, PA 15232



Location.
Location.
Location.

Two floors available with interconnecting stairwell. Unique Shadyside office opportunity with more high-end amenities than any other building in the East End.

Third Floor 1,318 SF



#OnWalnut

Centrally located in the heart of Shadyside's Shopping District with walking distance to the most popular retailers.



Fitness

- X Shadyside
- Steel Revolution
- Dragonfly Pilates
- Yoga Flow

Food

- Acorn
- The Yard
- Girasole
- Mario's
- Steel Cactus
- Pamela's Diner
- Shady Grove
- Café Moulin
- La Feria
- Mercurio's
- Sushi Too



Nearby

- Whole Foods (0.5 mi)	15 minutes	6 minutes
- Bakery Square	25 minutes	8 minutes
- Carnegie Mellon University	21 minutes	7 minutes
- University of Pittsburgh	31 minutes	9 minutes

Jesse Ainsman

+1 412 208 8414

jesse.ainsman@am.jll.com

DISCLAIMER

This information contained herein was obtained from sources deemed to be reliable. However, JLL makes no guarantees, warranties, or representations as to the completeness and accuracy thereof.

