

225 BLVD OF THE ALLIES

MODERN | REINVENTED | CONVENIENT



*Achieve
Ambitions*

Property Highlights



Complete redevelopment with brand new finishes



Four-story class A building



31,878 square feet available



Excellent exterior signage/naming opportunity



Three full floors available consisting of 10,626 square feet per floor. Can subdivide as small as 2,500 square feet.



Covered indoor parking lot with 13 reserved spaces



Minutes to Market Square



PPG Place is our neighbor; Market square is our backyard



New energy-efficient glass facade with floor-to-ceiling windows



Abundant natural light



Fitness Center and mailroom on the first floor

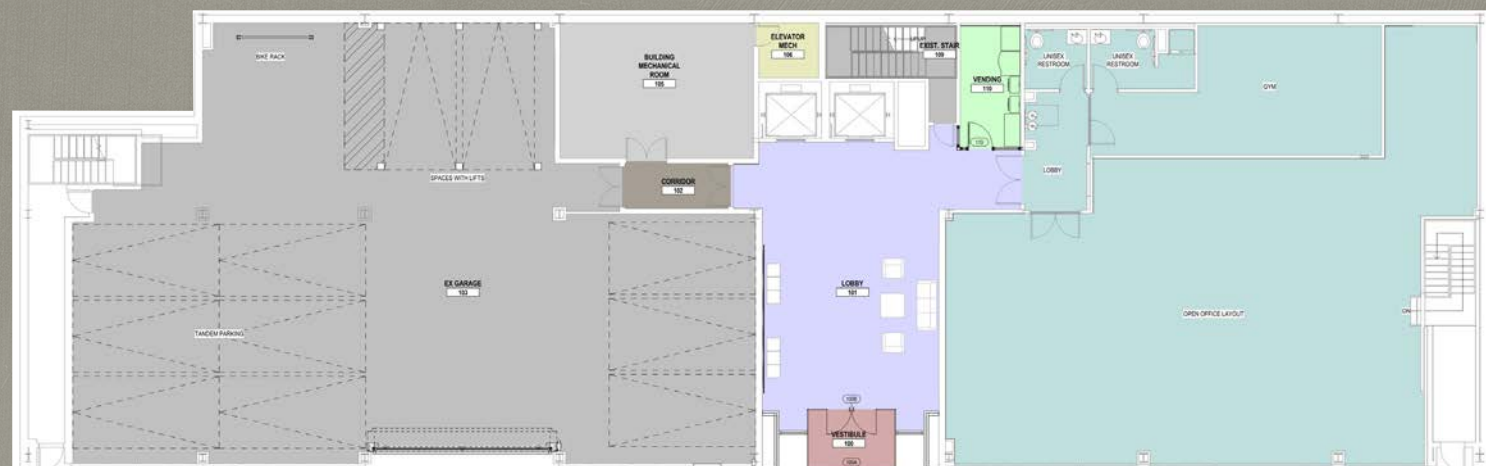


Ideal location in the CBD. Easily accessible to all major highways, mass transit and downtown amenities.



Floor Plans

Location



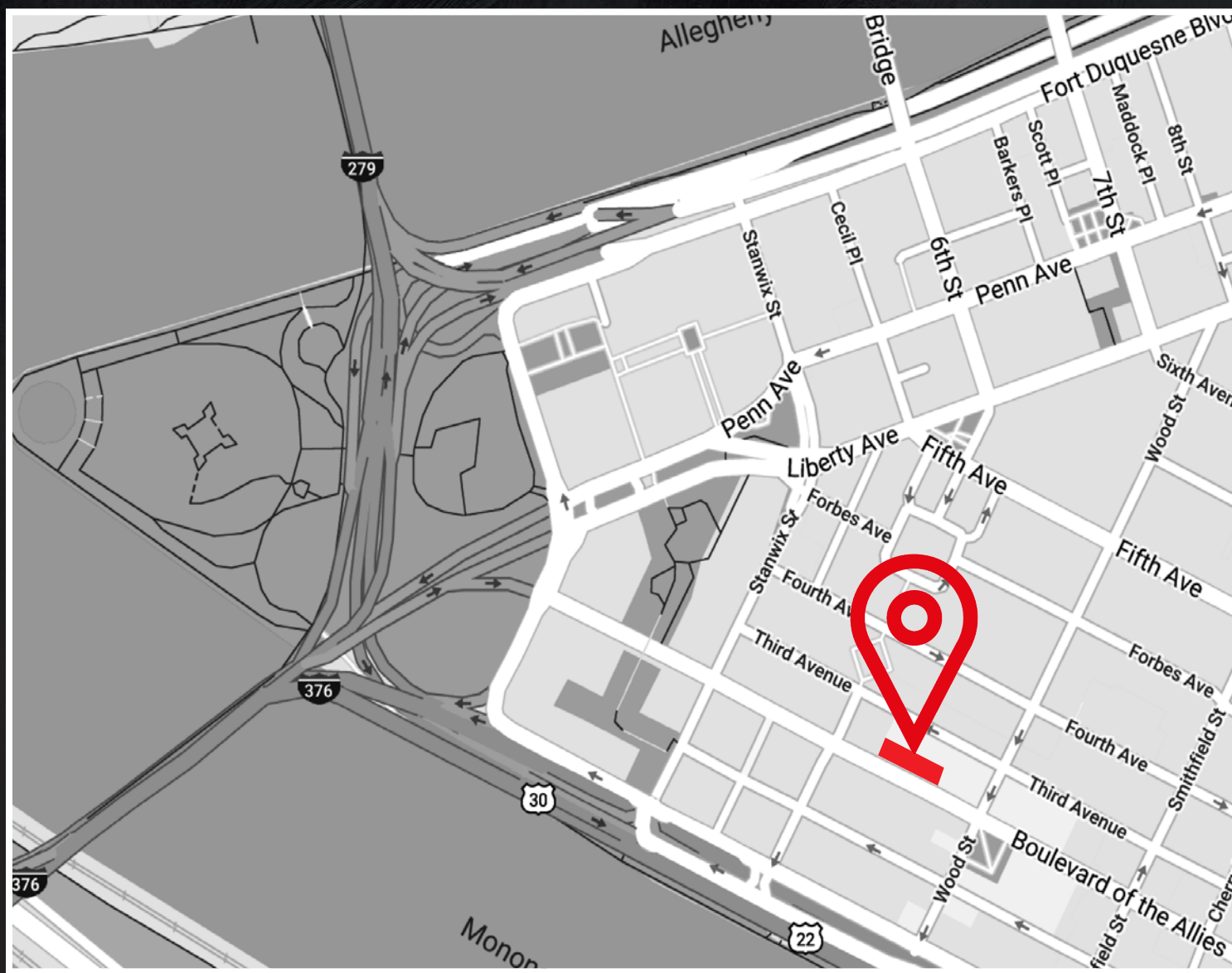
First Floor Plan



Sample Full Floor Plan



Sample Multi-tenant Floor Plan



- Ideal location in downtown Pittsburgh
- Excellent access to all major highways
- Located along bus lines 56, 57 and 58
- Short walk to numerous restaurants, bars, hotels, banks and shops, including Market Square
- Front row seat to parades on the Blvd of the Allies

225 BLVD OF THE ALLIES

225 BLVD OF THE ALLIES



JESSE AINSMAN

VP, Brokerage

+1 412 208 8414

Jesse.Ainsman@am.jll.com

Although information has been obtained from sources deemed reliable, neither Owner nor JLL makes any guarantees, warranties or representations, express or implied, as to the completeness or accuracy as to the information contained herein. Any projections, opinions, assumptions or estimates used are for example only. There may be differences between projected and actual results, and those differences may be material. The Property may be withdrawn without notice. Neither Owner nor JLL accepts any liability for any loss or damage suffered by any party resulting from reliance on this information. If the recipient of this information has signed a confidentiality agreement regarding this matter, this information is subject to the terms of that agreement. ©2020 Jones Lang LaSalle IP, Inc. All rights reserved.