



333 Atlantic Avenue

Retail Opportunity

Boerum Hill, Brooklyn, NY
Between Smith and Hoyt Streets

Space

Ground Floor*

Retail A	1,732 sf
Retail B	1,632 sf
Lower Level	2,200 sf
Sub-Basement	1,000 sf
Total	6,555 sf

*spaces can be combined

Frontage

46 ft on Atlantic Avenue

Ceiling Heights

Ground Floor	13 ft
Lower Level	11-22 ft
Sub-Basement	9 ft

Possession

Immediate

Comments

- Space in new construction with black iron shaft in place
- 46 feet of frontage on busy Atlantic Avenue
- Elevator and two stairwells connect the ground level to the lower level
- Over 15,000 new residential units on or coming to market in Downtown Brooklyn
- Within two blocks of the Hoyt-Schermerhorn Station servicing the **A C G** lines with an annual ridership of 3,264,293

Neighbors

steven alan

mod
australia

ABSOLUTE
COFFEE



meg

french louie

rime

Ryan P. Condren

+1 212 220 4117

ryan.condren@am.jll.com

George Danut

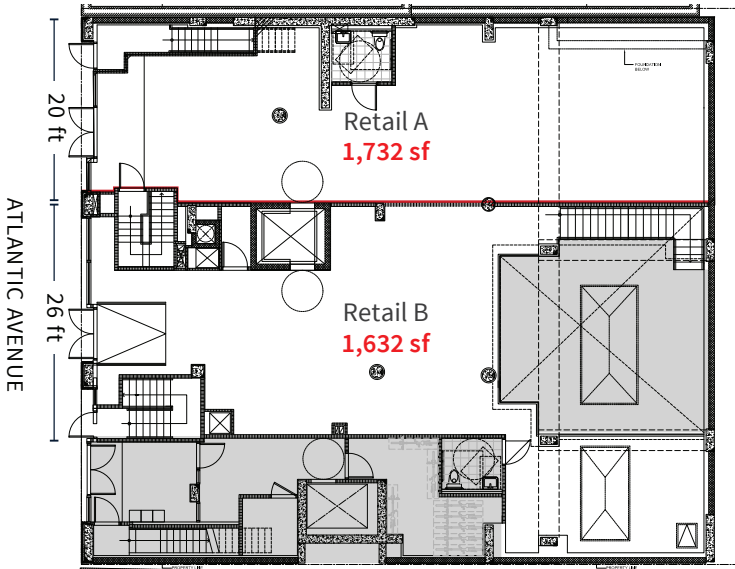
+1 212 220 4121

george.danut@am.jll.com

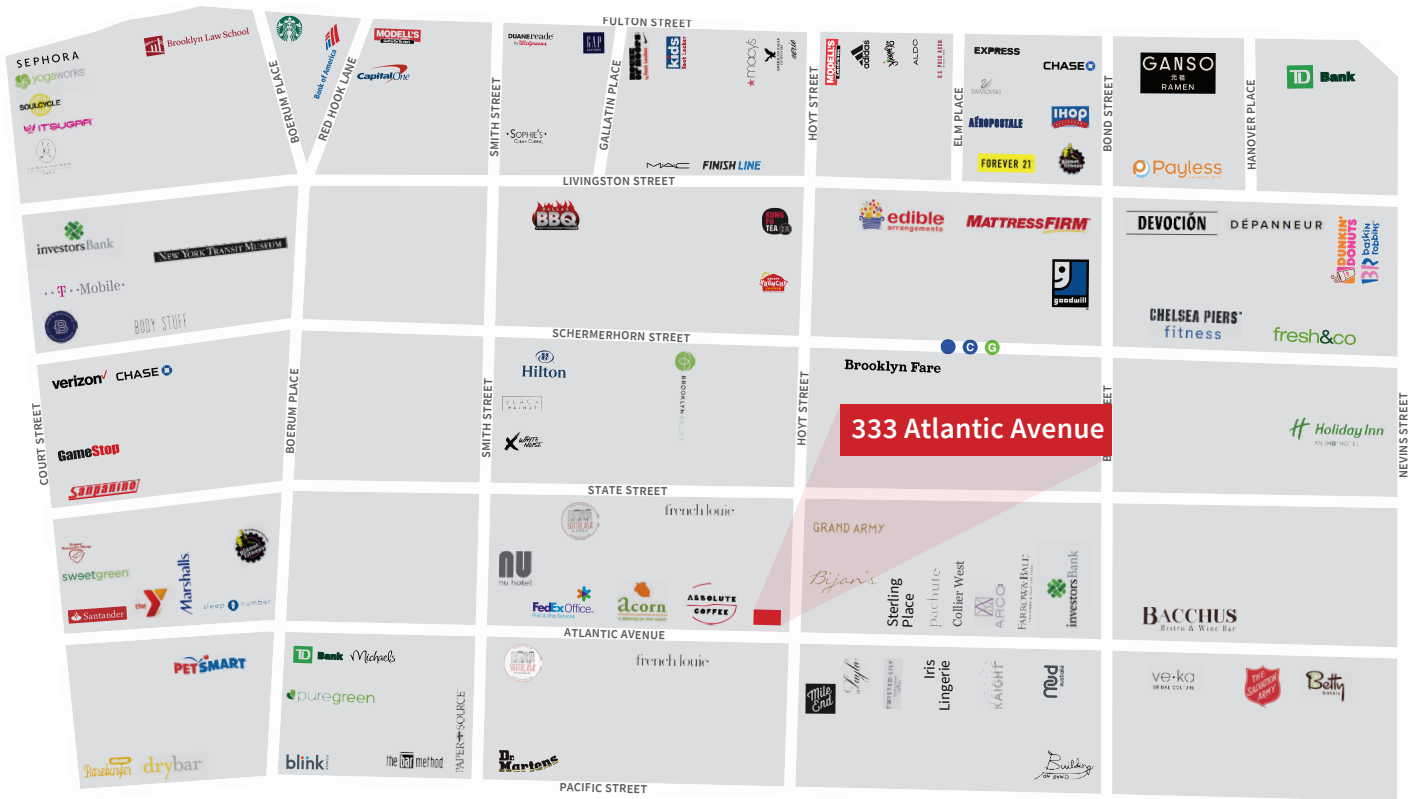
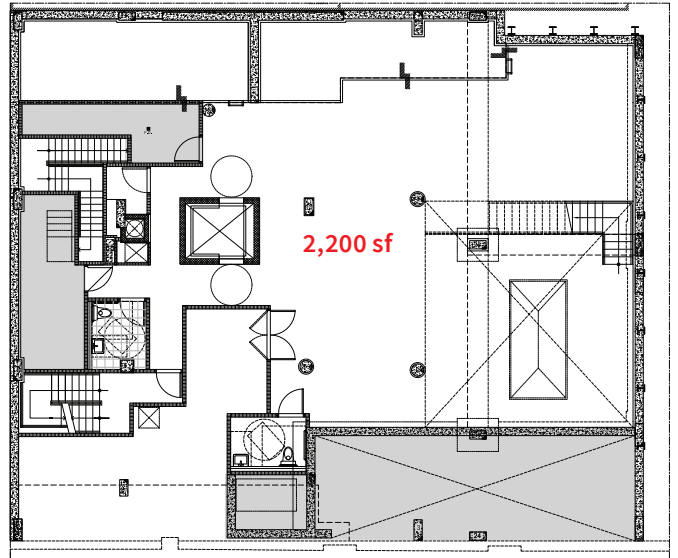


333 Atlantic Avenue

Ground Floor



Lower Level



29M
annual ridership



170K
daytime population



162K
average household
income

Jones Lang LaSalle Brokerage, Inc. | 330 Madison Avenue New York, NY 10017

DISCLAIMER

Although information has been obtained from sources deemed reliable, neither Owner nor JLL makes any guarantees, warranties or representations, express or implied, as to the completeness or accuracy as to the information contained herein. Any projections, opinions, assumptions or estimates used are for example only. There may be differences between projected and actual results, and those differences may be material. The Property may be withdrawn without notice. Neither Owner nor JLL accepts any liability for any loss or damage suffered by any party resulting from reliance on this information. If the recipient of this information has signed a confidentiality agreement regarding this matter, this information is subject to the terms of that agreement. ©2019. Jones Lang LaSalle IP, Inc. All rights reserved.

