



Artist rendering

# 146 Fifth Avenue

## Retail Opportunity

Park Slope, Brooklyn, NY  
 Northwest Corner of Douglass Street

### Space A

Ground Floor: 1,200 sf  
 Basement: 1,200 sf

### Space B

Ground Floor: 700 sf

Possession  
 Arranged

### Comments

- Corner space located on vibrant 5th Avenue next to popular restaurants and bars and within a few block from Barclays Center
- Landlord will provide a vanilla box, new store-front, and 400 AMP electric
- Within two blocks of 7th Avenue Station, servicing the **B Q** lines, and a short walk to the Atlantic Terminal, the busiest station in Brooklyn, servicing **2 3 4 5 B D Q R** lines and the LIRR

### Neighbors



Aēsop



miriam



al di la' trattoria



Ryan P. Condren  
 +1 212 220 4117  
 ryan.condren@am.jll.com

George Danut  
 +1 212 220 4121  
 george.danut@am.jll.com



# 146 Fifth Avenue



**22M**  
annual area  
subway ridership



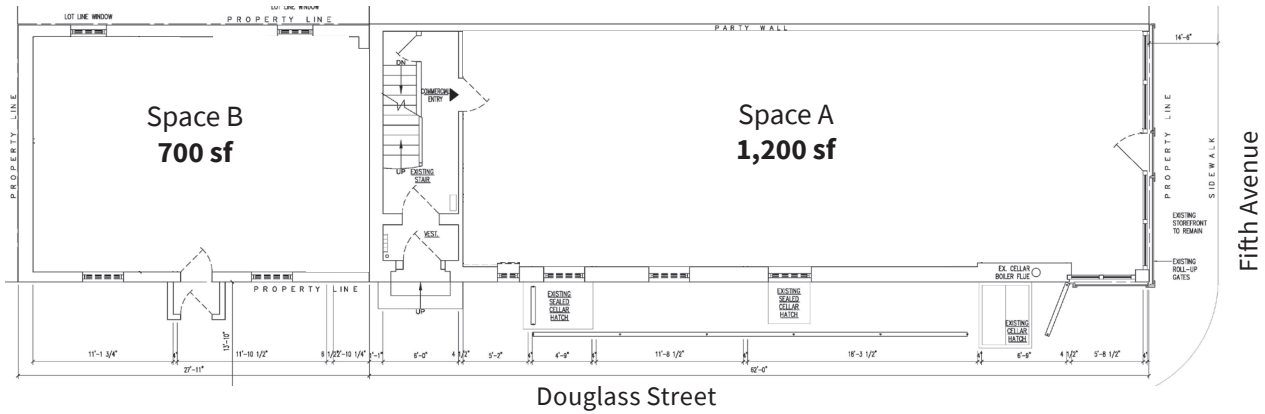
**150,404**  
residential population  
(1-m radius)



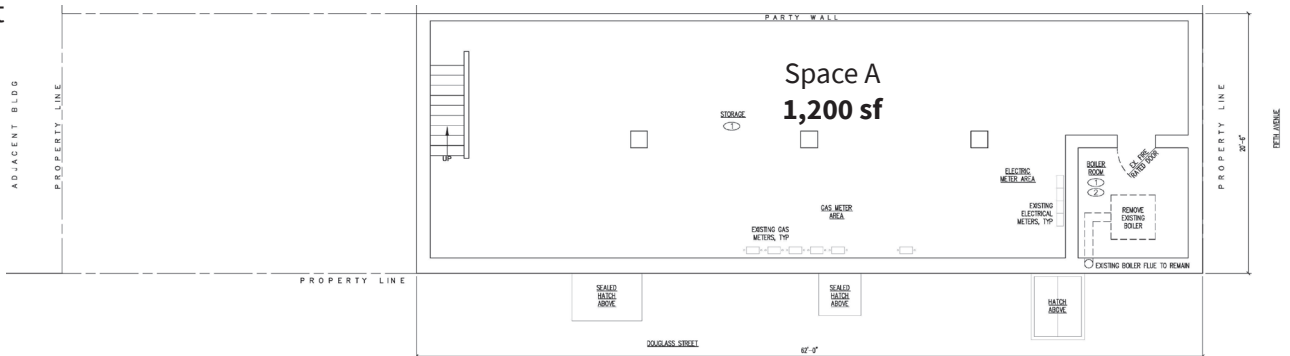
**144K**  
average household  
income (1/4-m radius)



## Ground Floor



## Basement



Jones Lang LaSalle Brokerage, Inc. | 330 Madison Avenue New York, NY 10017

### DISCLAIMER

Although information has been obtained from sources deemed reliable, neither Owner nor JLL makes any guarantees, warranties or representations, express or implied, as to the completeness or accuracy as to the information contained herein. Any projections, opinions, assumptions or estimates used are for example only. There may be differences between projected and actual results, and those differences may be material. The Property may be withdrawn without notice. Neither Owner nor JLL accepts any liability for any loss or damage suffered by any party resulting from reliance on this information. If the recipient of this information has signed a confidentiality agreement regarding this matter, this information is subject to the terms of that agreement. ©2020 Jones Lang LaSalle IP, Inc. All rights reserved.

