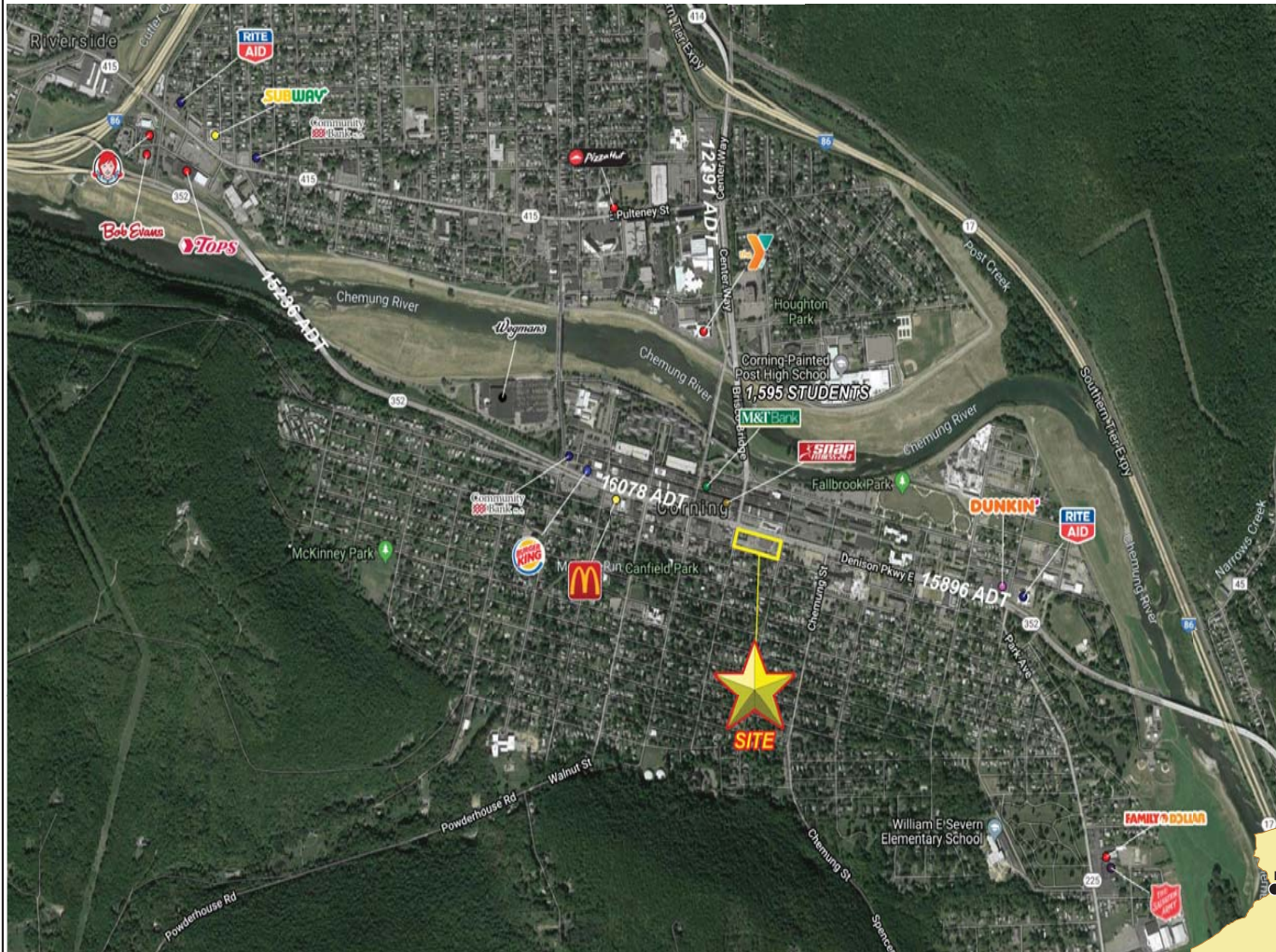




Corning, New York

*80 DENISON PARKWAY EAST
RETAIL / MEDICAL / OFFICE*



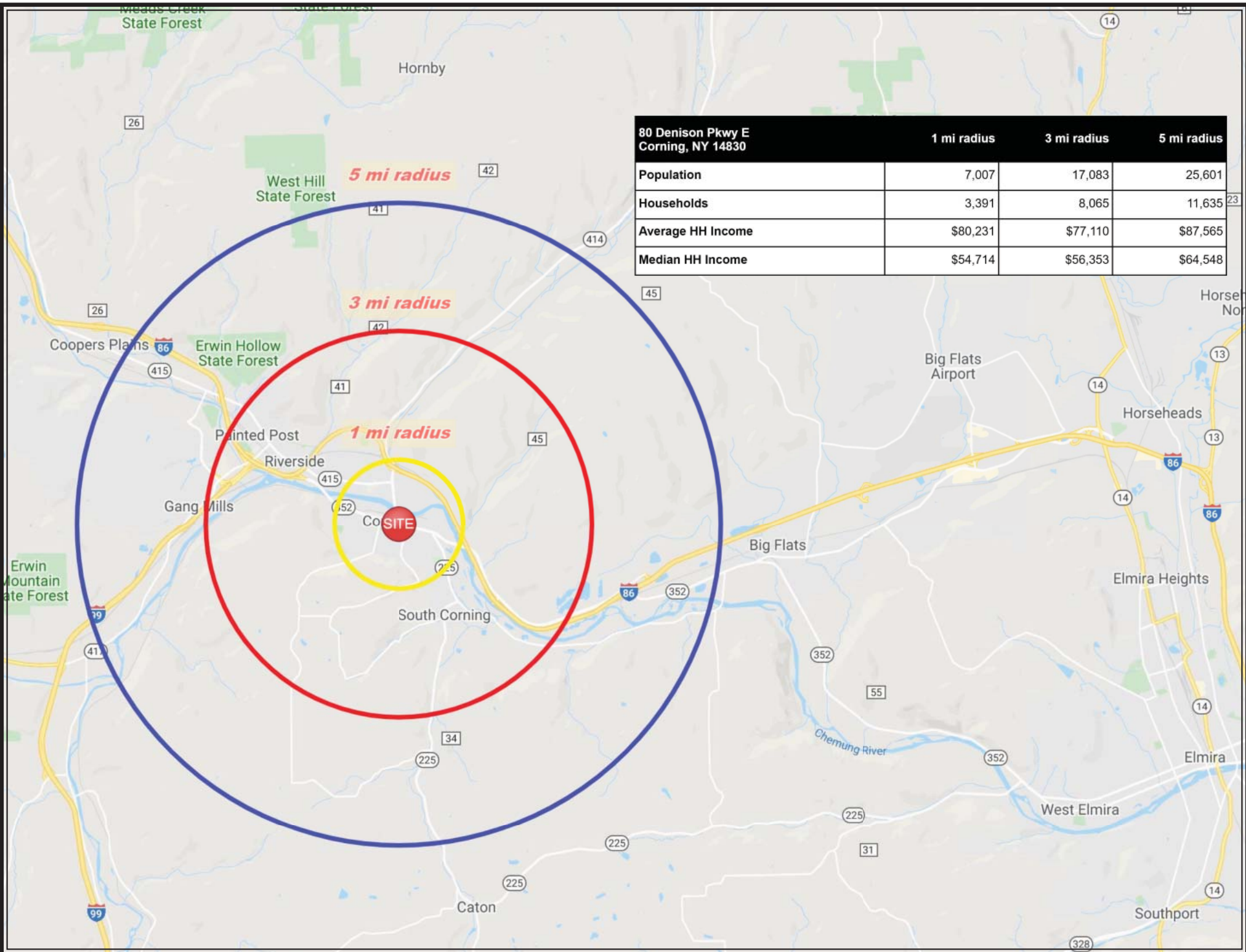
- 14,550 SF freestanding location.

FOR LEASE

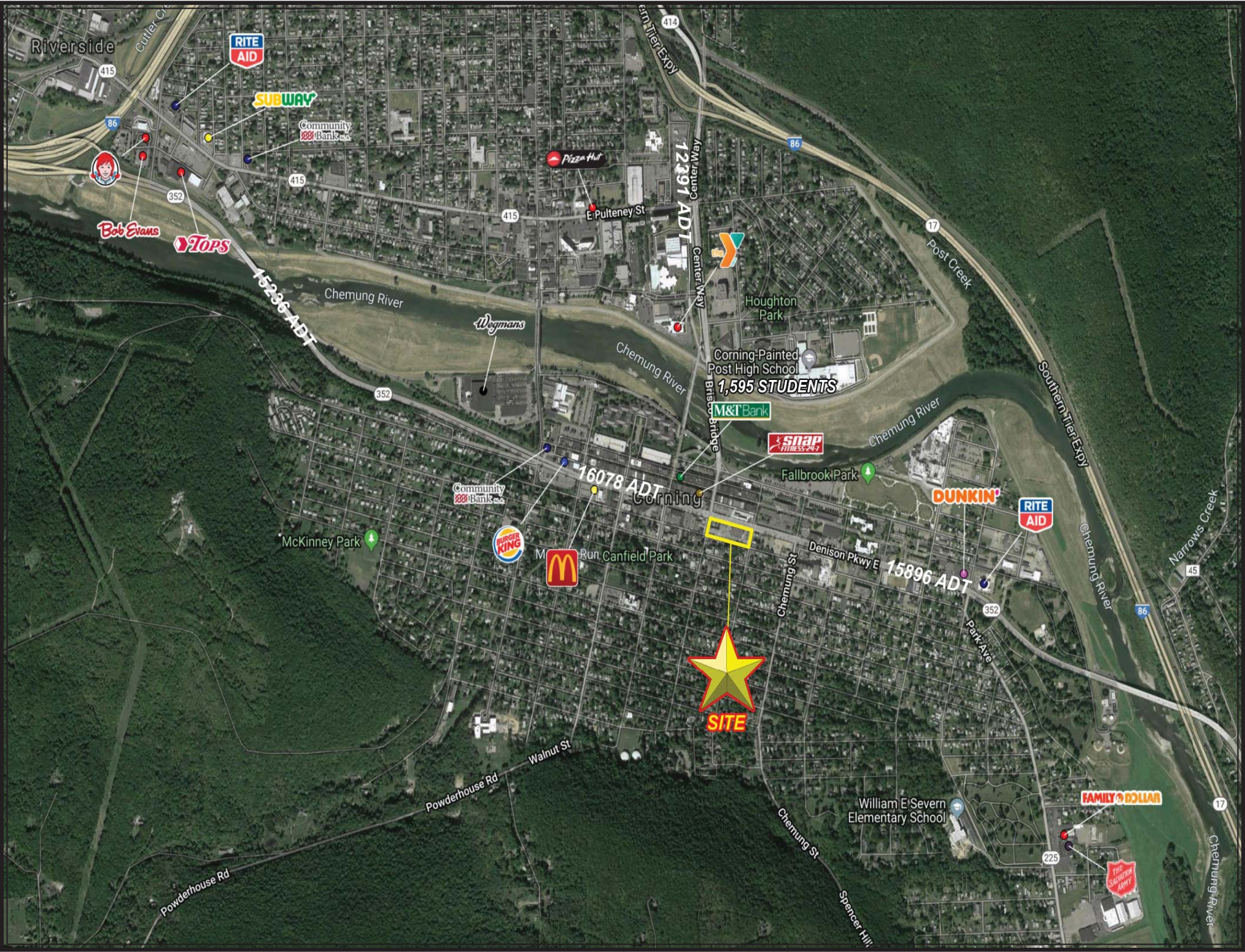


Contact:
James W Lavelle
Real Estate Associate Broker
Widewaters Group Inc.
Office: (315) 445-8613
Mobile: (315)263-6326
jlavelle@widewaters.com

Tracy S Lauer
Real Estate Associate Broker
Widewaters Group Inc.
Office: (315) 445-8631
Mobile: (315) 382-1373
tlauer@widewaters.com



80 Denison Pkwy E Corning, NY 14830	1 mi radius	3 mi radius	5 mi radius
Population	7,007	17,083	25,601
Households	3,391	8,065	11,635
Average HH Income	\$80,231	\$77,110	\$87,565
Median HH Income	\$54,714	\$56,353	\$64,548



Riverside



SUBWAY

Community Bank

Pizza Hut

E Pulteney St

Bob Evans

TOPS

Wegmans

Chemung River

Center Way
12391 ADT

Corning-Painted Post High School
1,595 STUDENTS

M&T Bank

SNAP FITNESS

Chemung River

BURGER KING

16078 ADT

Community Bank



Run Canfield Park

Denison Pkwy E

15896 ADT

DUNKIN'



McKinney Park

Chemung St

Fallbrook Park

William E Severn Elementary School

FAMILY DOLLAR



Powderhouse Rd

Walnut St

Chemung St

Spencer Hill

Post Creek

Southern Tier Expy

Chemung River

Narrows Creek

Chemung River

