

# For Sublease

1400 Goodale Street  
Columbus, OH 43215



**27,242 RSF available**



## Property Details

- 27,247 RSF available for sublease on the 2nd floor
- Monument signage available
- High-end interior finishes
- Furniture in place and available upon request

## Property Features

- \$25.00/SF FSG
- Open & Creative layout
- New furniture
- Move-in Ready
- Sublease expires 4/30/2027
- Outdoor Patio seating



### Brad McMahon

Managing Director  
Direct: +614.332.1201  
Office: +614.460.4444  
[Brad.McMahon@jll.com](mailto:Brad.McMahon@jll.com)

### Jeff Carey

Managing Director  
Direct: +614.425.6321  
Office: +614.460.4444  
[Jeff.Carey@jll.com](mailto:Jeff.Carey@jll.com)



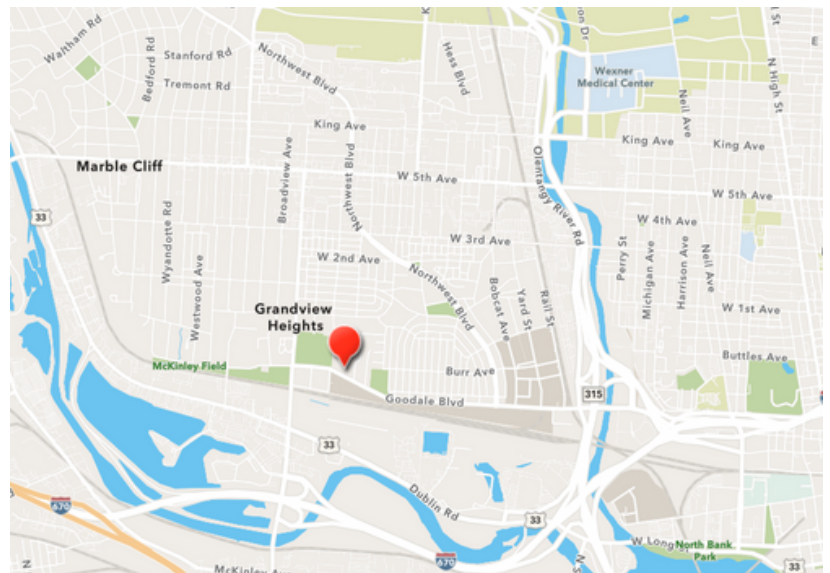
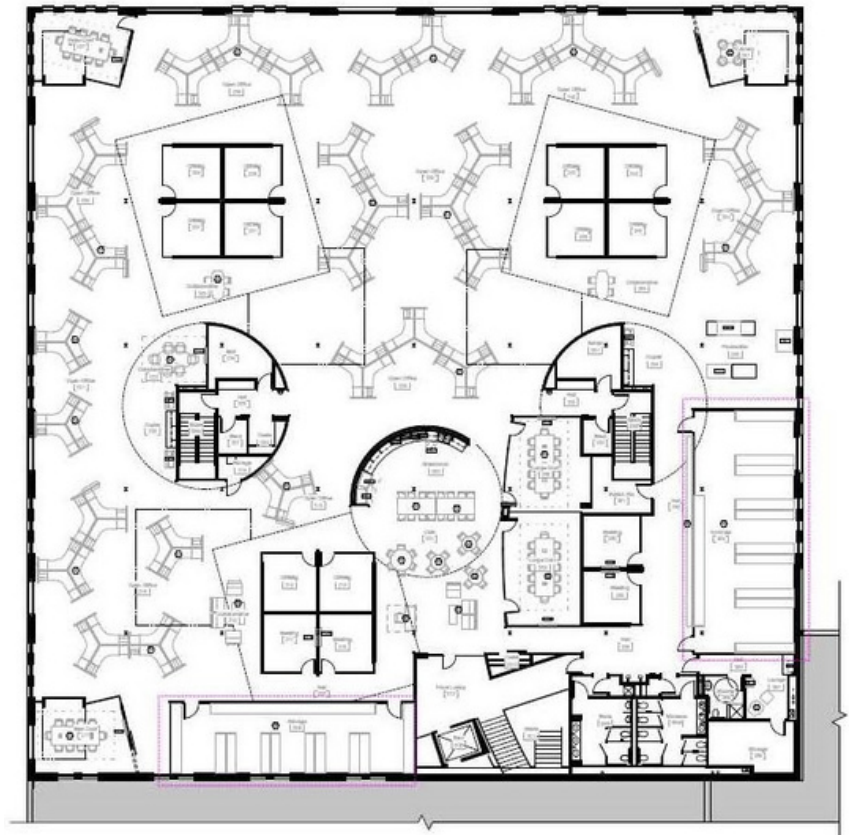
[jll.com/Columbus](http://jll.com/Columbus)

Although information has been obtained from sources deemed reliable, JLL does not make any guarantees, warranties or representations, express or implied, as to the completeness or accuracy as to the information contained herein. Any projections, opinions, assumptions or estimates used are for example only. There may be differences between projected and actual results, and those differences may be material. JLL does not accept any liability for any loss or damage suffered by any party resulting from reliance on this information. If the recipient of this information has signed a confidentiality agreement with JLL regarding this matter, this information is subject to the terms of that agreement. ©2023. Jones Lang LaSalle IP, Inc. All rights reserved.

JLL Columbus | 375 North Front St, Suite 100 | Columbus, OH 43215



1400 Goodale St  
Columbus, OH 43215



## Location Details

- Excellent access to I-670, SR-315 and SR-33
- Located in Grandview
- Located near numerous amenities including parks and restaurant



[jll.com/Columbus](https://jll.com/Columbus)

Although information has been obtained from sources deemed reliable, JLL does not make any guarantees, warranties or representations, express or implied, as to the completeness or accuracy as to the information contained herein. Any projections, opinions, assumptions or estimates used are for example only. There may be differences between projected and actual results, and those differences may be material. JLL does not accept any liability for any loss or damage suffered by any party resulting from reliance on this information. If the recipient of this information has signed a confidentiality agreement with JLL regarding this matter, this information is subject to the terms of that agreement. ©2023. Jones Lang LaSalle IP, Inc. All rights reserved.

**Brad McMahon**  
Managing Director  
Direct: +614.332.1201  
Office: +614.460.4444  
[Brad.McMahon@jll.com](mailto:Brad.McMahon@jll.com)

**Jeff Carey**  
Managing Director  
Direct: +614.425.6321  
Office: +614.460.4444  
[Jeff.Carey@jll.com](mailto:Jeff.Carey@jll.com)