



BUILDING 5

TROPHY CLASS OFFICE SPACE -
2,845 - 10,312 SF



VISIBLE FROM PARKWAY WEST
Parkway West Submarket Pittsburgh, PA 15276



FEATURES

The newest building in Soffer's Penn Center West offers a terrific exterior branding opportunity and is located in the most accessible intersection of I-79 & I-376.



147,000 SF trophy class five-story office building



large & efficient floor plans & a two-story atrium lobby



ample free parking & easy access to Parkway West



outdoor public spaces & tons of natural light



prominent signage opportunity available



property management, coffee shop & deli in complex

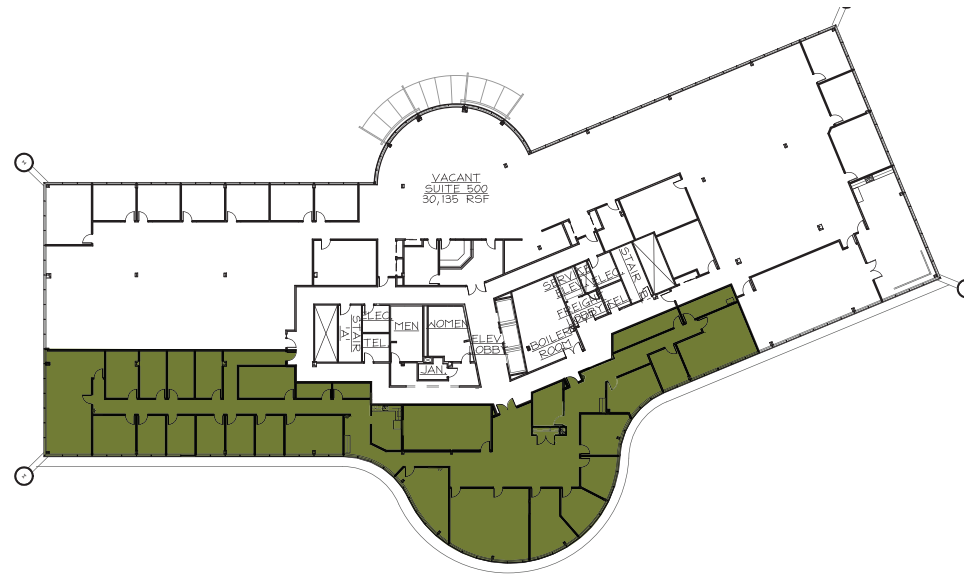
PLUS:

Food trucks on campus!





FIFTH FLOOR PLAN



TOP FLOOR
AVAILABILITY

10,312 SF
CONTIGUOUS SPACE

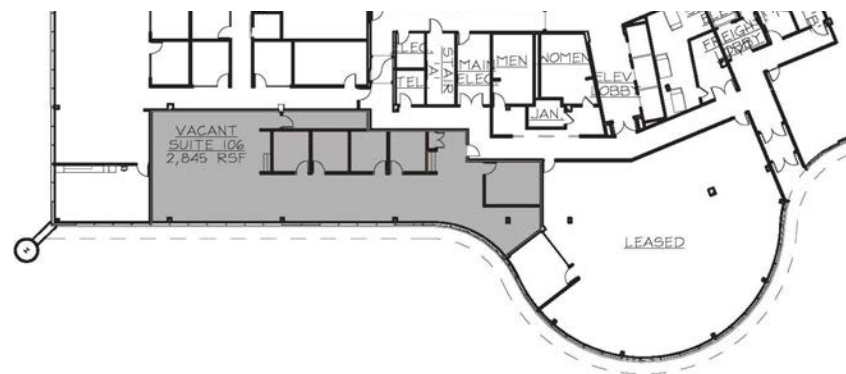
BRAND NEW AMENITY SUITE!

30-person training room, breakout rooms, tenant lounge and cafe in Building 2. Available to all tenants of Buildings 2, 3, 4 & 5

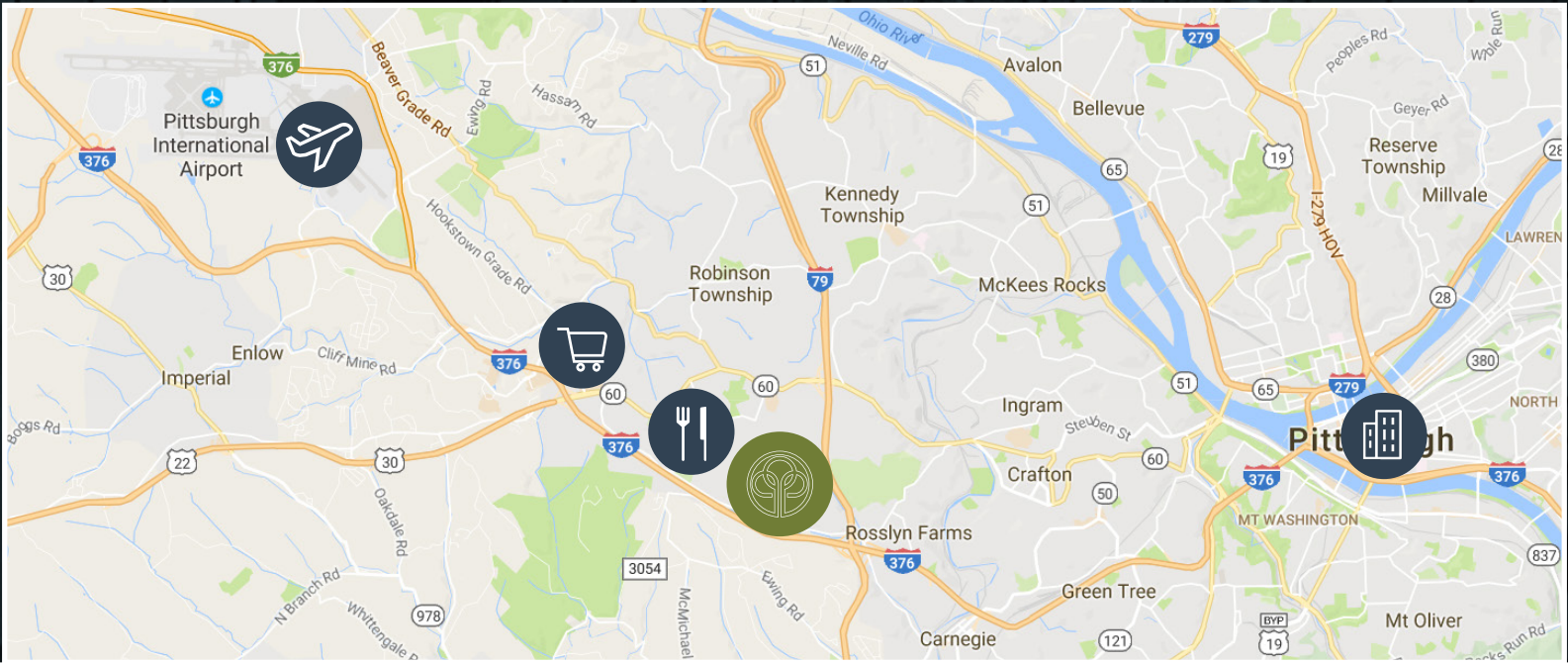


FIRST FLOOR AVAILABILITY

2,845 SF suite



LOCATION



10 minutes to
Pittsburgh
International Airport



10 minutes to
Pittsburgh's Central
Business District



2 minutes to
Settler's Ridge



3 miles to Robinson
Town Centre & The
Pointe at North Fayette

For more information or to schedule your tour, please contact:

JASON STEWART
412 208 1402
jason.stewart@am.jll.com

JEFF ADAMS
412 208 1404
jeff.adams@am.jll.com

JACKIE BEZEK
412 208 1413
jackie.bezek@am.jll.com

