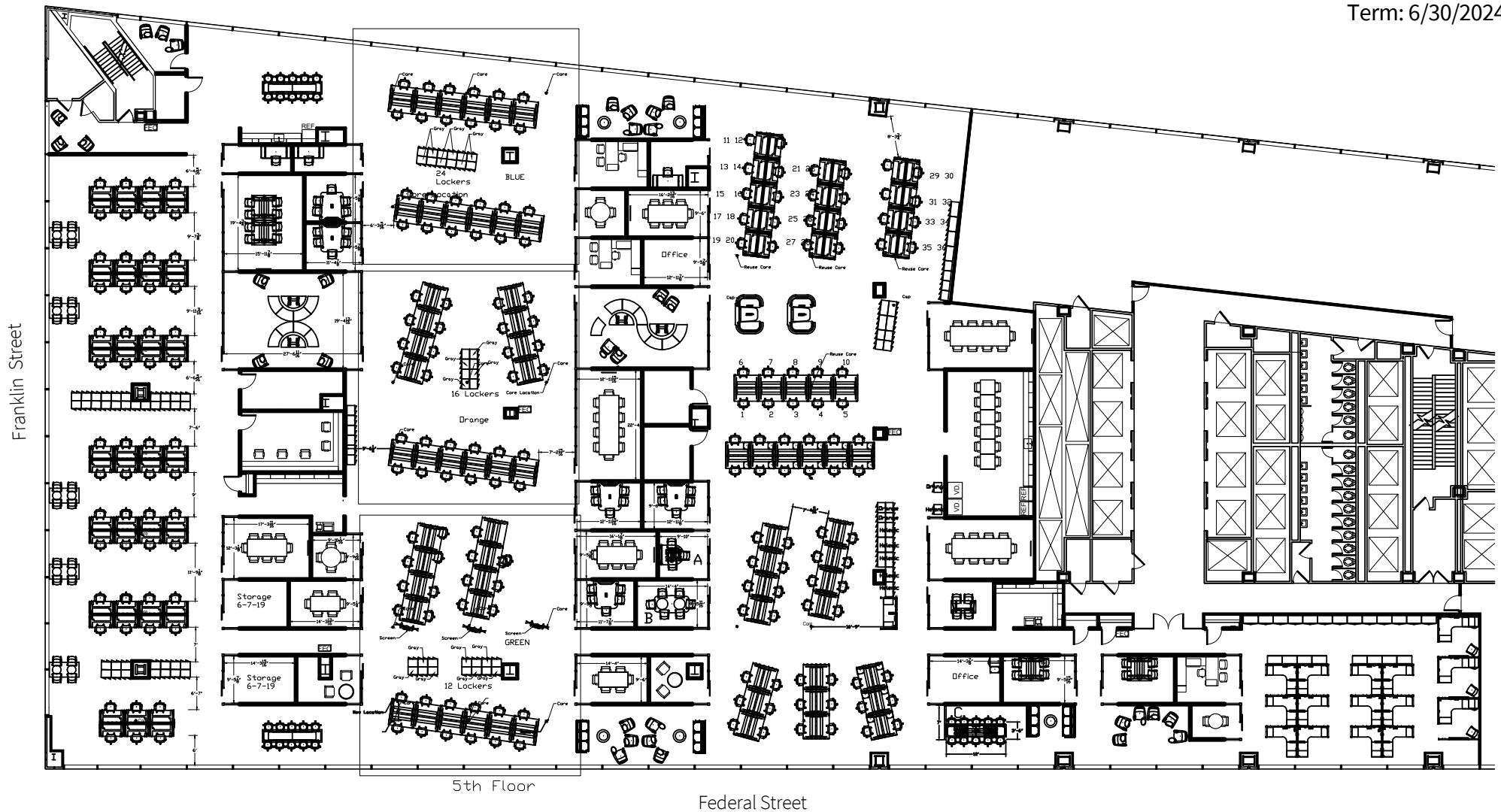


One Federal Street

5th Floor
36,537 SF

Term: 6/30/2024



For more information, please contact:

Bryan Sparkes
315 415 5879
Bryan.Sparkes@am.jll.com

Maeve Cleary
617 531 4213
Maeve.Cleary@am.ill.com



ONE FEDERAL STREET

FLOOR 28 17,343 SF

FOR LEASING INFORMATION
PLEASE CONTACT:

DAVID WILKINSON

Email: DWilkins@TishmanSpeyer.com

Office: (617) 342-7503

Mobile: (857) 206-3923

VICTORIA CURTIS

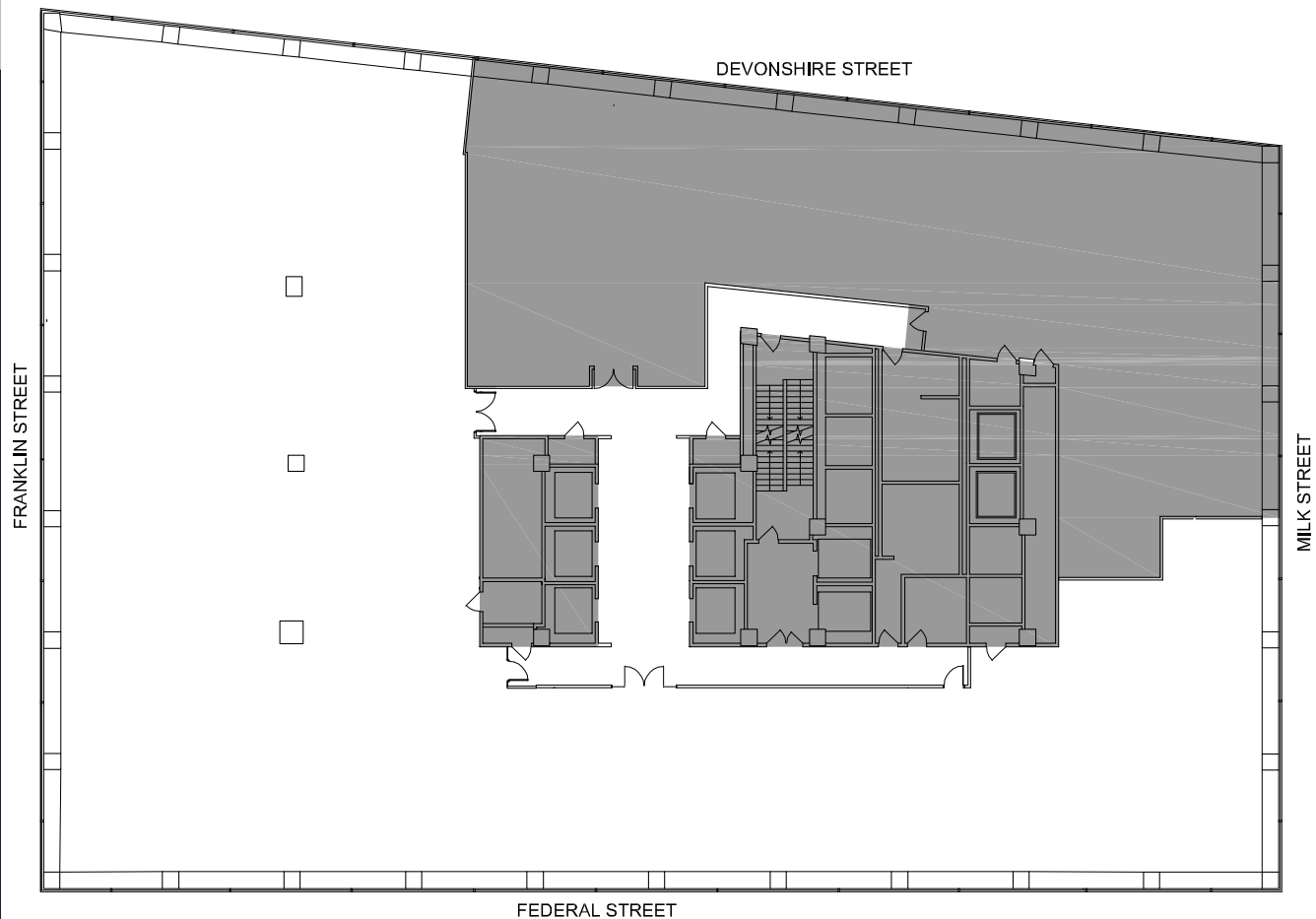
Email: VCurtis@TishmanSpeyer.com

Office: (617) 748-7521

Mobile: (315) 263-4220

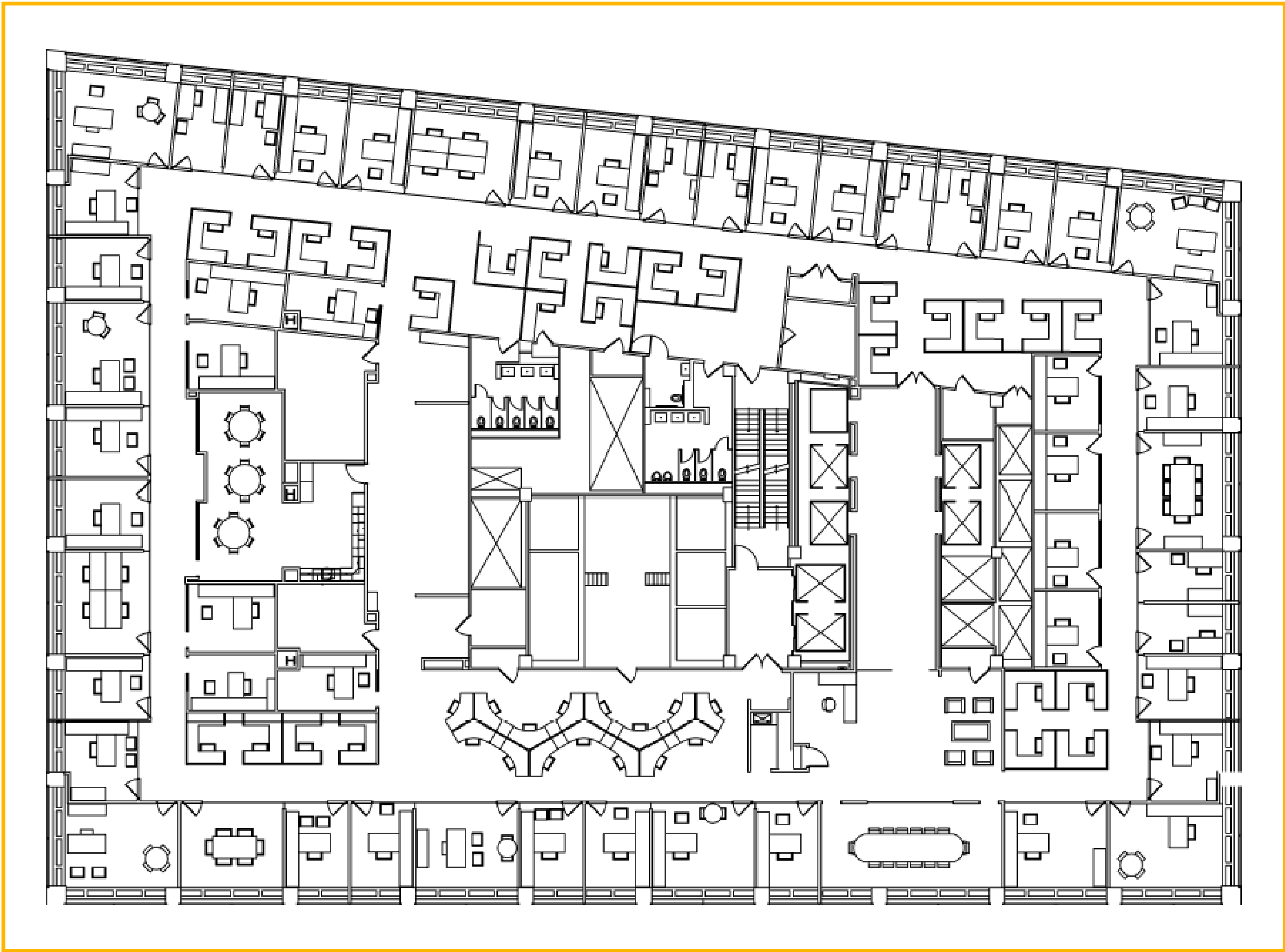


TISHMAN SPEYER



Floor Plan

24,272 SF



Even though obtained from sources deemed reliable, no warranty or representation, express or implied, is made as to the accuracy of the information herein, and it is subject to errors, omissions, change of price, rental or other conditions, withdrawal without notice, and to any special listing conditions imposed by our principals.

1 Federal Street, Floor 30

Boston, Massachusetts
02110



cresa

ONE STREET FEDERAL

FLOOR 37 25,244 SF

FOR LEASING INFORMATION
PLEASE CONTACT:

DAVID WILKINSON

Email: DWilkins@TishmanSpeyer.com

Office: (617) 342-7503

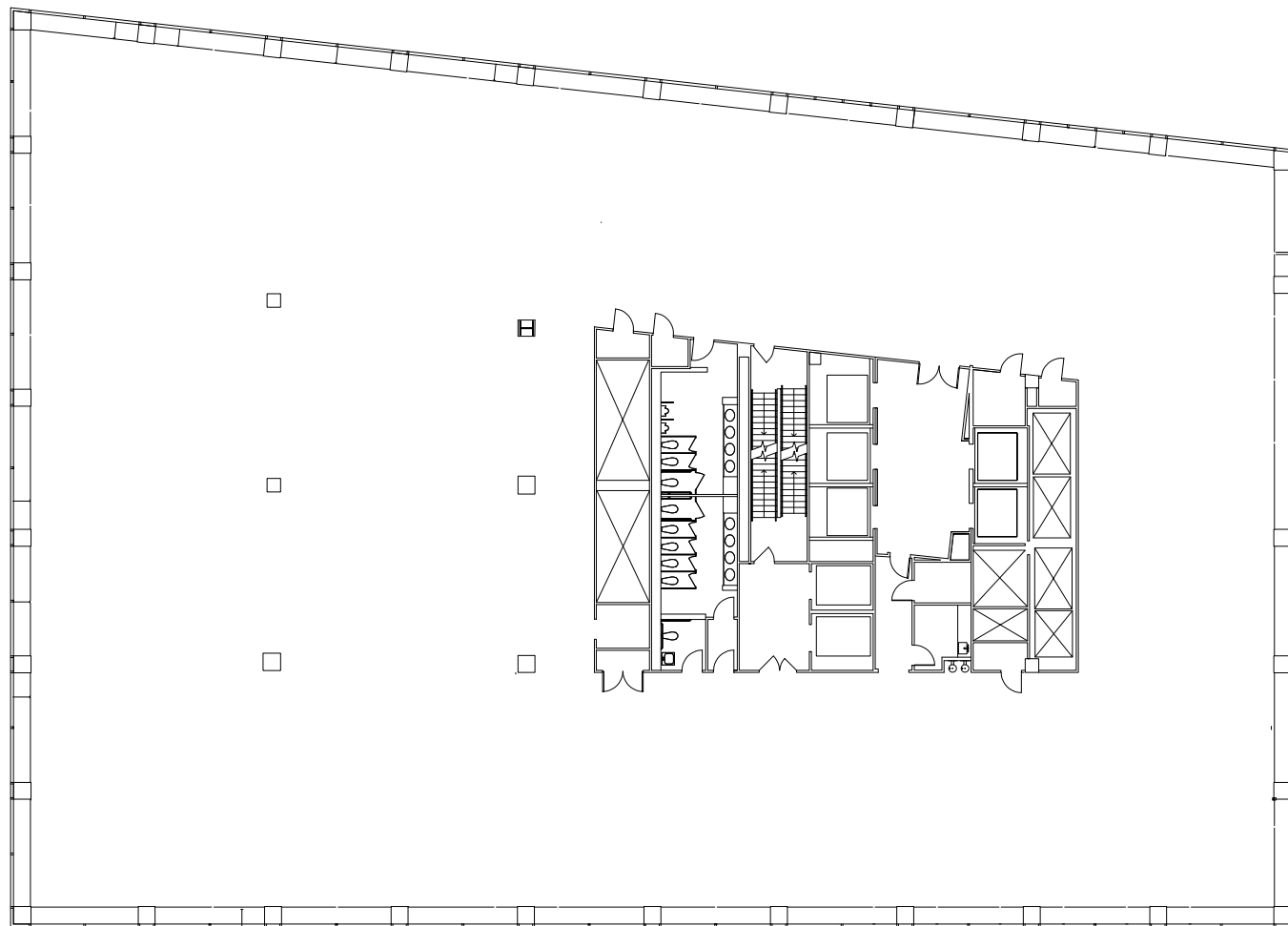
Mobile: (857) 206-3923

VICTORIA CURTIS

Email: VCurtis@TishmanSpeyer.com

Office: (617) 748-7521

Mobile: (315) 263-4220



TISHMAN SPEYER