



# Suites available with rare outdoor space

1617 John F Kennedy Blvd.  
Philadelphia, PA

- **Outdoor space adding unparalleled value within the urban Philadelphia market**
- Asking rate: \$29.00/SF Full Service
- Suite 440: North side, demo condition, outside terrace
- Suite 1710: South side space with outdoor terrace
- Suite 1750: 3 sides of glass overlooking Comcast Plaza

Contact:

**David A. Healy**

+ 1 610 329 2026

david.healy@jll.com

**Joshua Sloan**

+ 1 215 990 0573

josh.sloan@jll.com

**Eric Berkowitz**

+ 1 610 416 2226

eric.berkowitz@jll.com

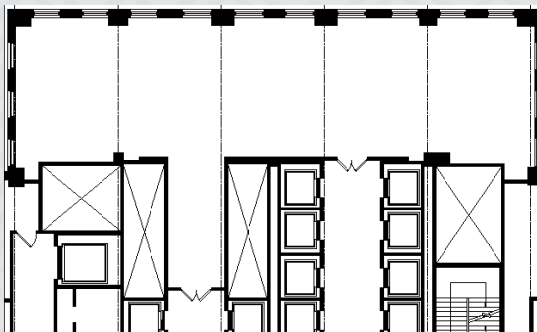
**JLL | Jones Lang LaSalle Brokerage, Inc.**

1650 Arch Street #2500

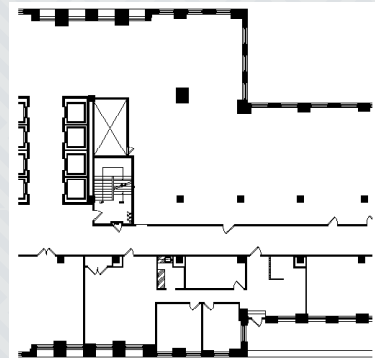
Philadelphia, PA 19103



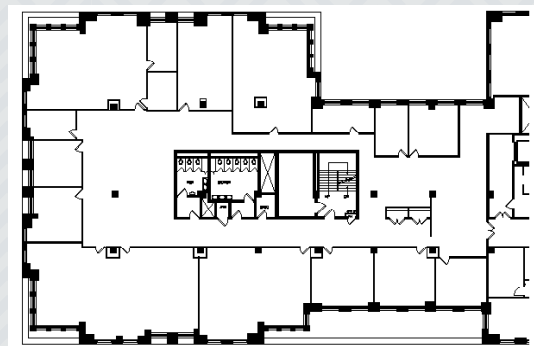
**Suite 440: 3,333 SF**



**Suite 1710: 2,645 SF**



**Suite 1750: 13,868 SF**



Although information has been obtained from sources deemed reliable, neither Owner nor JLL makes any guarantees, warranties or representations, express or implied, as to the completeness or accuracy as to the information contained herein. Any projections, opinions, assumptions or estimates used are for example only. There may be differences between projected and actual results, and those differences may be material. The Property may be withdrawn without notice. Neither Owner nor JLL accepts any liability for any loss or damage suffered by any party resulting from reliance on this information. If the recipient of this information has signed a confidentiality agreement regarding this matter, this information is subject to the terms of that agreement. ©2022. Jones Lang LaSalle IP, Inc. All rights reserved.