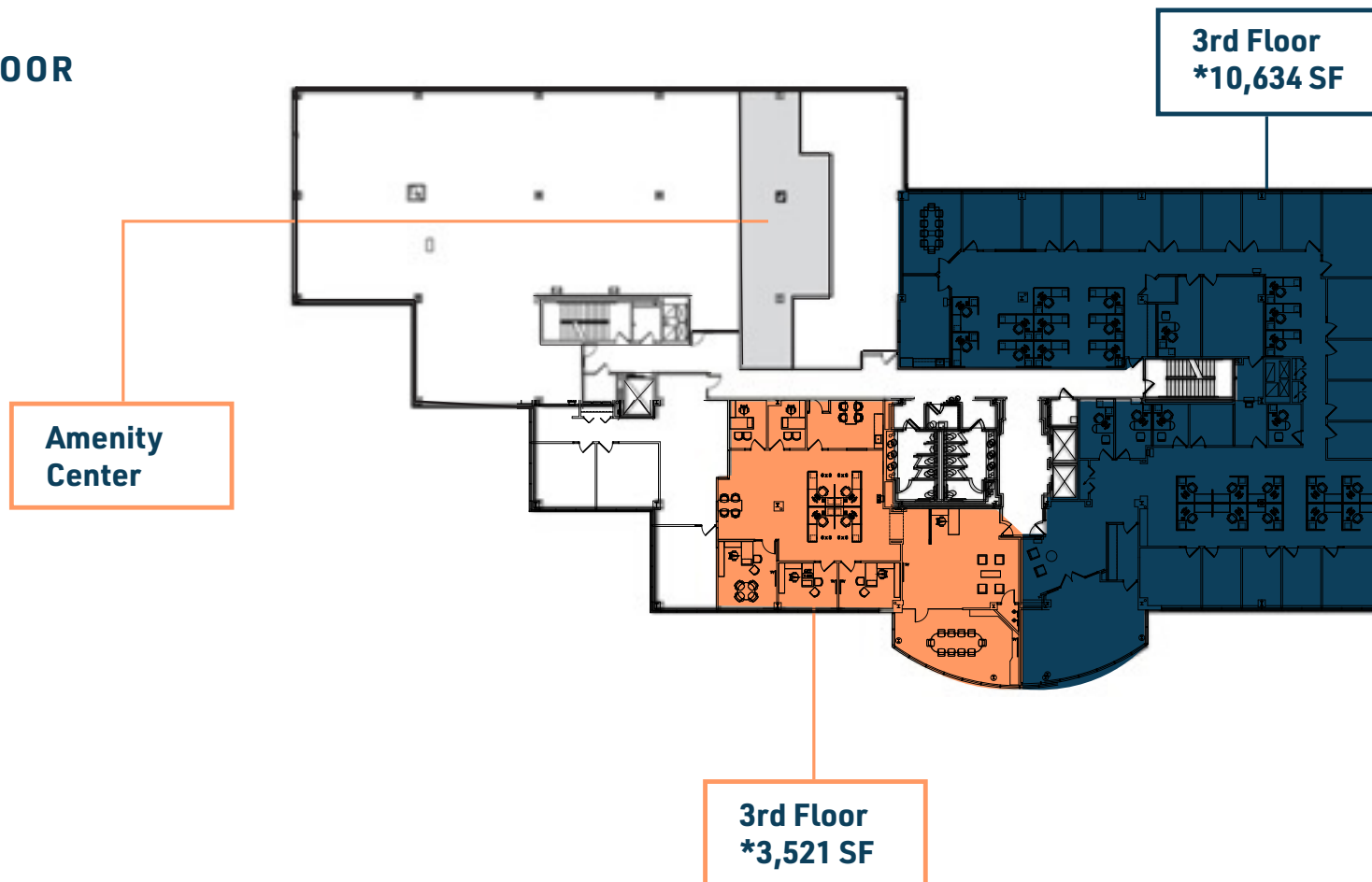


3RD FLOOR



*can be combined for 14,155 SF

For more information please contact:

Tom Kent

+1 617 531 4224
Tom.Kent@am.jll.com

Sean Lynch

+1 617 316 6488
Sean.Lynch@am.jll.com

Mike Keenan

+ 1 617 316 6424
Michael.Keenan@am.jll.com

**97 LIBBEY INDUSTRIAL
PARKWAY**
Weymouth, MA

