

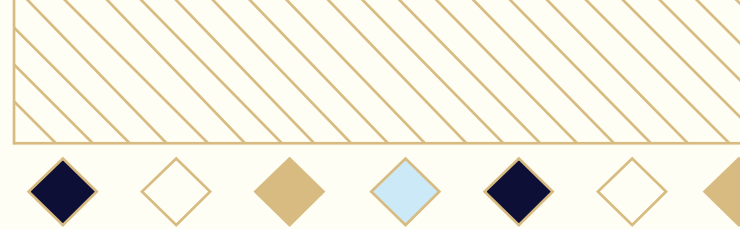
THE  
BELLEVUE

200 S. BROAD ST.  
PHILADELPHIA, PA

SEE  
YOUR  
LIGHTS  
SHINE

along the Avenue of the Arts

FOOD & BEVERAGE  
OPPORTUNITY



# EXISTING FOOD & BEVERAGE SPACES AVAILABLE



The Bellevue, long a Philadelphia mainstay, is poised for a major revitalization that will deepen its roots as a prime destination for shopping, dining, and lifestyle. Playing a major role in this project is a vision for a new landscape of restaurant spaces in the heart of the city.

This opportunity for two food and beverage spaces covering 10,000 square feet along Broad Street, Philadelphia's famed "Avenue of the Arts," offers an unmatched location where over 100,000 people walk, bike, drive, shop, and commute every day.

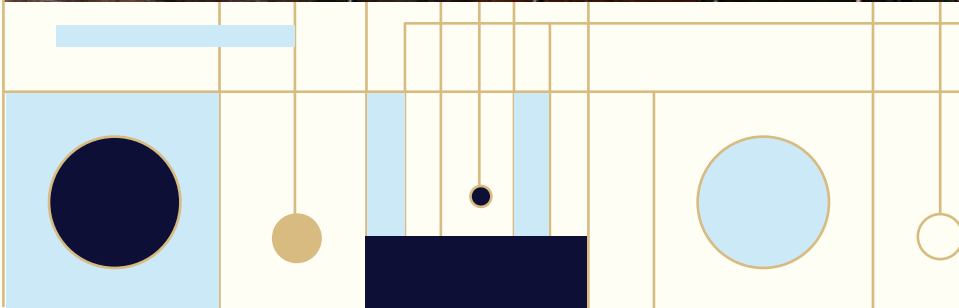


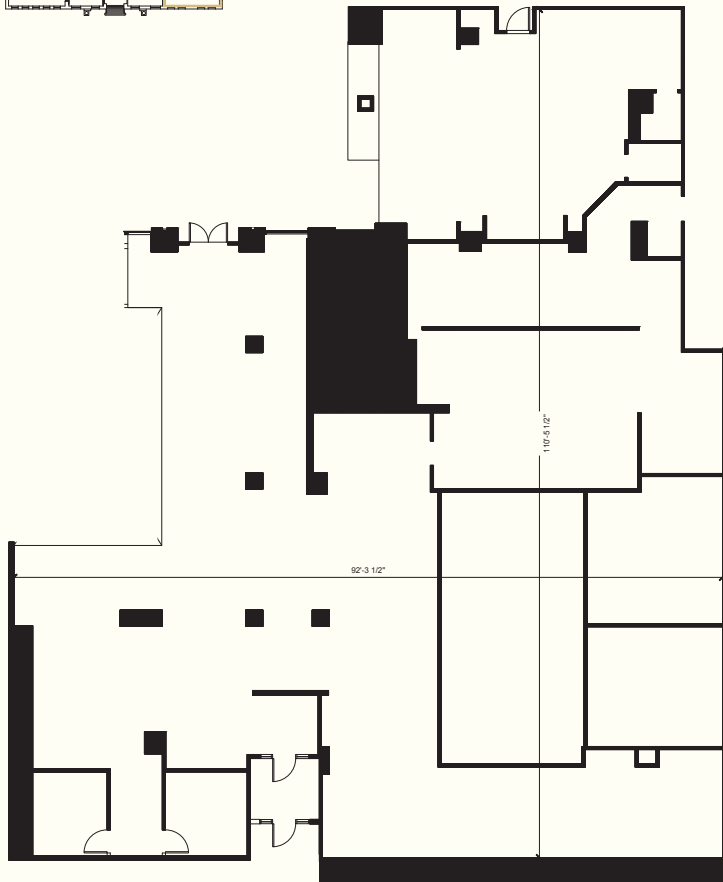
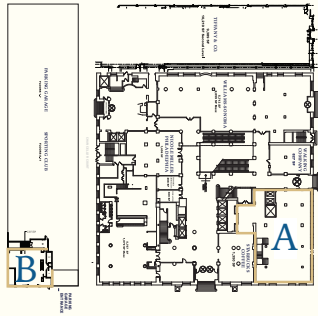
Nestled between Midtown Village's famed restaurant row on 13th Street and Rittenhouse Square, both known culinary hotspots, The Bellevue's location rises as a unique opportunity to both complement and differentiate itself as a go-to food and beverage destination.

As a co-tenant and neighbor to The Palm, availabilities for this prime address include 6,500 square feet of space with a direct entrance on Broad Street and interior access to retail, a hotel, parking garage, and fitness facilities within the project.

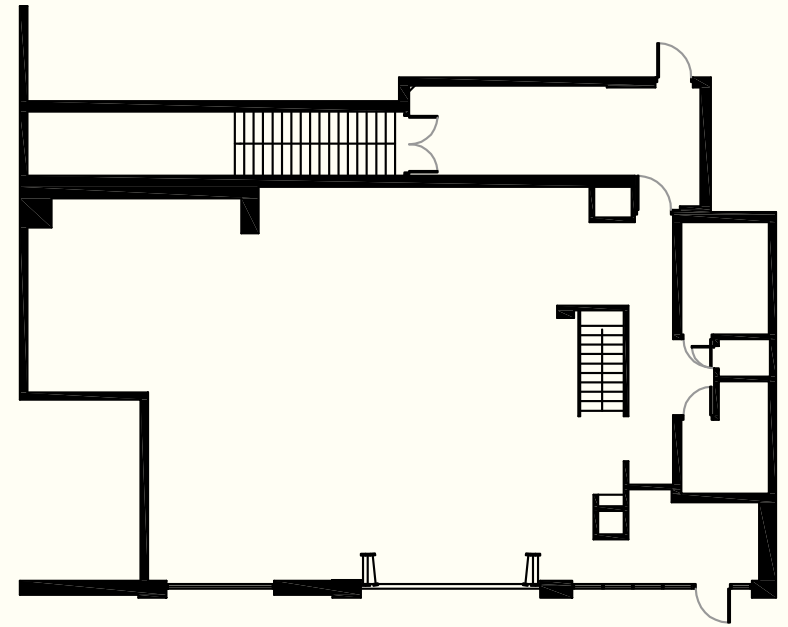


An additional 3,000 square feet of space with tremendous frontage along the base of the parking garage on Broad Street offers optimal visibility for signage and branding.





BROAD STREET



Ground Floor

BROAD STREET



# FOR LEASING INFORMATION

---

PAIGE JAFFE

Managing Director

+1 215 988 5500

paige.jaffe@am.jll.com

MALLORY SCACCETTI

Senior Vice President

+1 215 988 5500

mallory.scaccetti@am.jll.com

JLL | JONES LANG LASALLE

1650 Arch Street, Suite 2500

Philadelphia, PA 19103

+1 215 988 5500

THE  
BELLEVUE



RIR

© 2019 Jones Lang LaSalle IP, Inc. All rights reserved. All information contained herein is from sources deemed reliable; however, no representation or warranty is made to the accuracy thereof.