



325 Columbus Avenue

Northeast corner of West 75th Street
Upper West Side Retail Opportunity



Former Duane Reade Available for Sublease

Space

Ground Floor: 3,964 sf
Lower Level: 3,924 sf (selling)
Mezzanine: 2,406 sf (selling)
Total: 10,294 sf

Frontage

72 feet

Possession

Immediate

Term

Through 2/28/2023

Asking Rent

\$350,000 PA gross

Neighbors



Levain Bakery

sweetgreen

PAPER SOURCE

vb HANDLES

SHAKE SHACK

EILEEN FISHER

bluemercury
makeup • skincare • spa

citibank

Demographics

Term	Radius	'20 Pop	Total HH	Avg. HHI
Through 2/28/2023	.25 Mile	19,521	11,208	\$192,183
Asking Rent	.5 Mile	70,444	39,472	\$196,801
\$350,000 PA gross	.75 Mile	119,307	64,019	\$200,693

Former Duane Reade store #14414

Michael Riley

+1 212 812 5901

Michael.Riley@jll.com

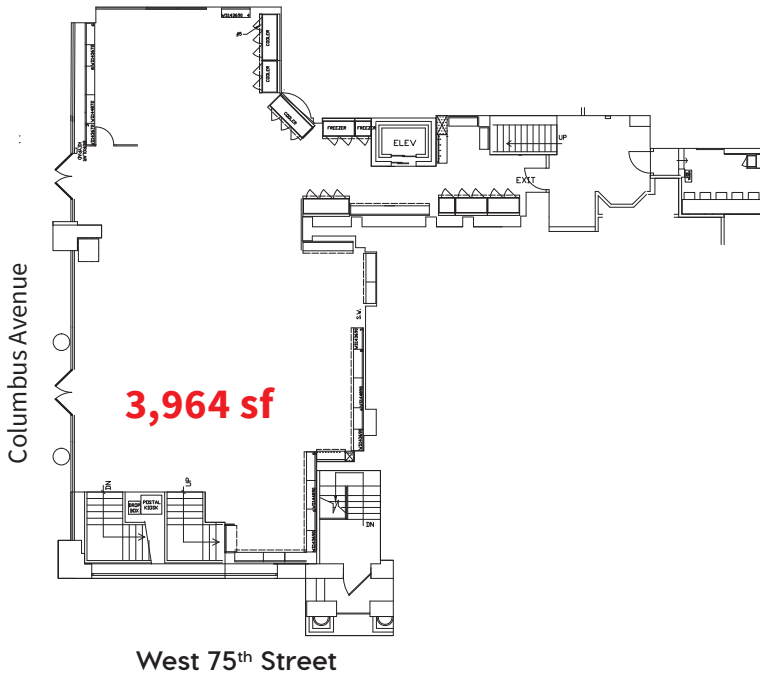
Patrick A. Smith

+1 212 812 5888

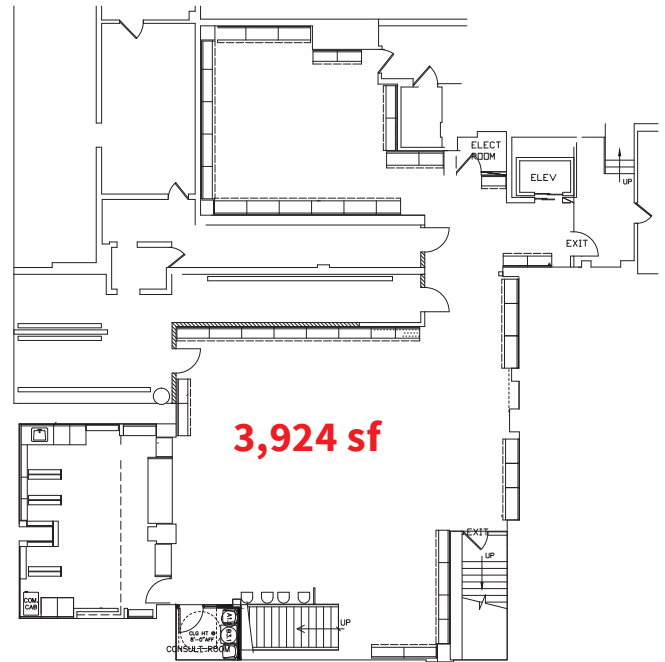
PatrickA.Smith@jll.com

325 Columbus Avenue

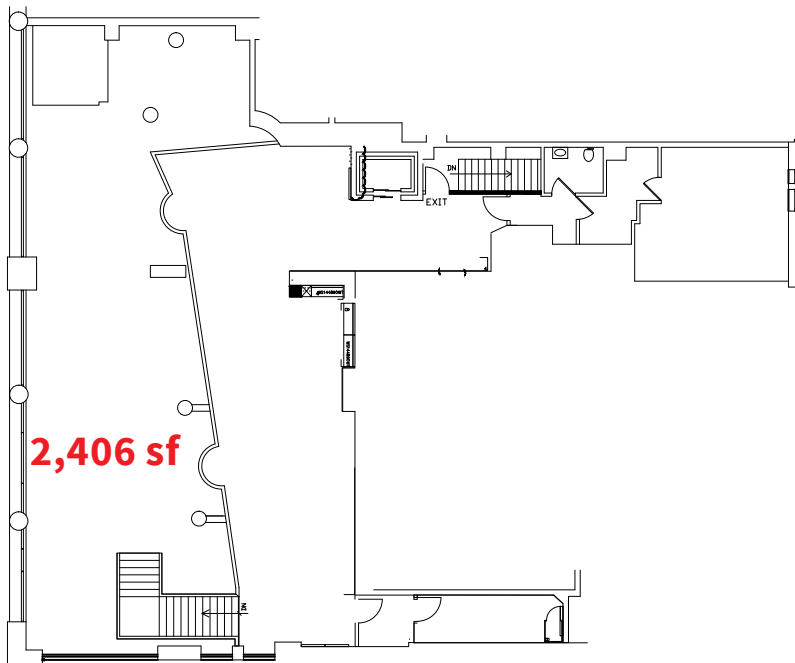
Ground Floor



Lower Level



Mezzanine



Jones Lang LaSalle Brokerage, Inc. | 330 Madison Avenue New York, NY 10017

DISCLAIMER

Although information has been obtained from sources deemed reliable, neither Owner nor JLL makes any guarantees, warranties or representations, express or implied, as to the completeness or accuracy as to the information contained herein. Any projections, opinions, assumptions or estimates used are for example only. There may be differences between projected and actual results, and those differences may be material. The Property may be withdrawn without notice. Neither Owner nor JLL accepts any liability for any loss or damage suffered by any party resulting from reliance on this information. If the recipient of this information has signed a confidentiality agreement regarding this matter, this information is subject to the terms of that agreement. ©2022 Jones Lang LaSalle IP, Inc. All rights reserved.