



# For Lease

## **+/-12,000 SF office space available**

- Easy access to I-95 and Route 1
- Modern lobby/reception area with private offices, conference rooms, and kitchen/break room
- Contemporary interior with high ceilings and great natural light
- Large storage area
- 5.8/1000 SF parking ratio (70 total parking spaces available)
- Minutes from Northeast Philadelphia Airport
- Accessible via SEPTA Bus Routes 1, 20, & 50

## **10400 Drummond Road Philadelphia, PA**

**Austin Weitz**  
+1 609 221 5848  
austin.weitz@am.jll.com

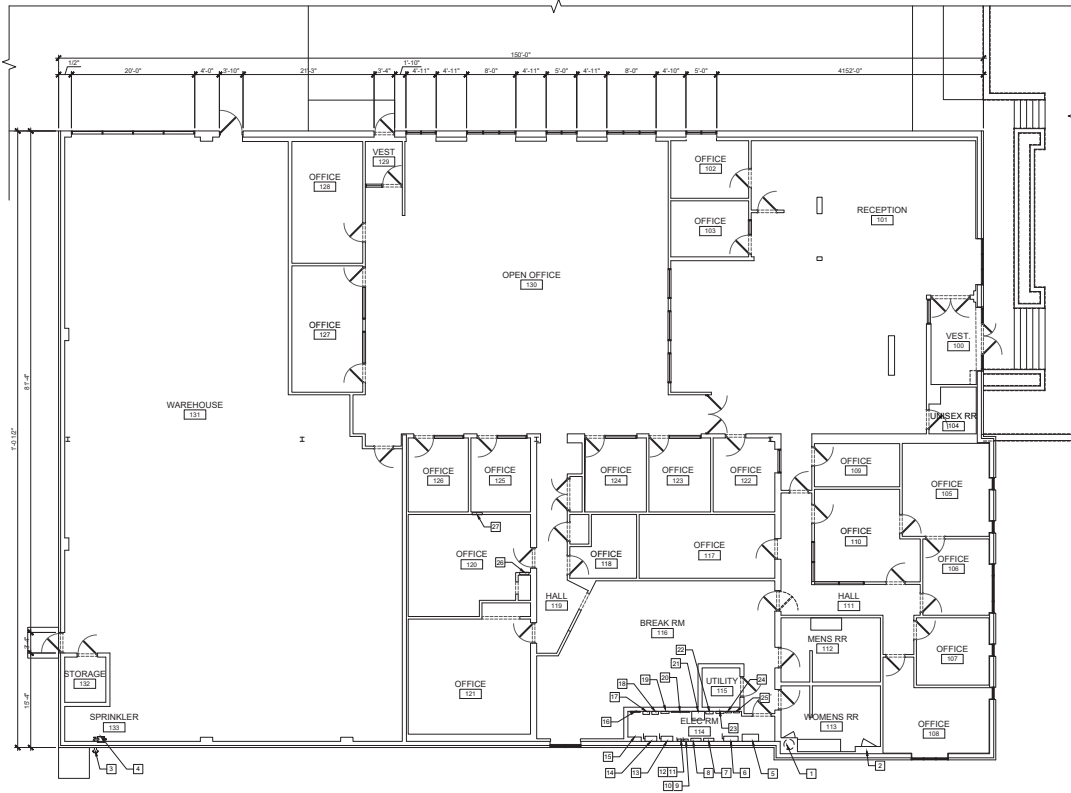
**Ryan Sweeney**  
+1 610 517 0914  
ryan.sweeney@am.jll.com

**JLL | Jones Lang LaSalle Brokerage, Inc.**  
1650 Arch Street Street, Suite 2500  
Philadelphia, PA 19103  
+1 215 988 5500  
jll.com/philadelphia



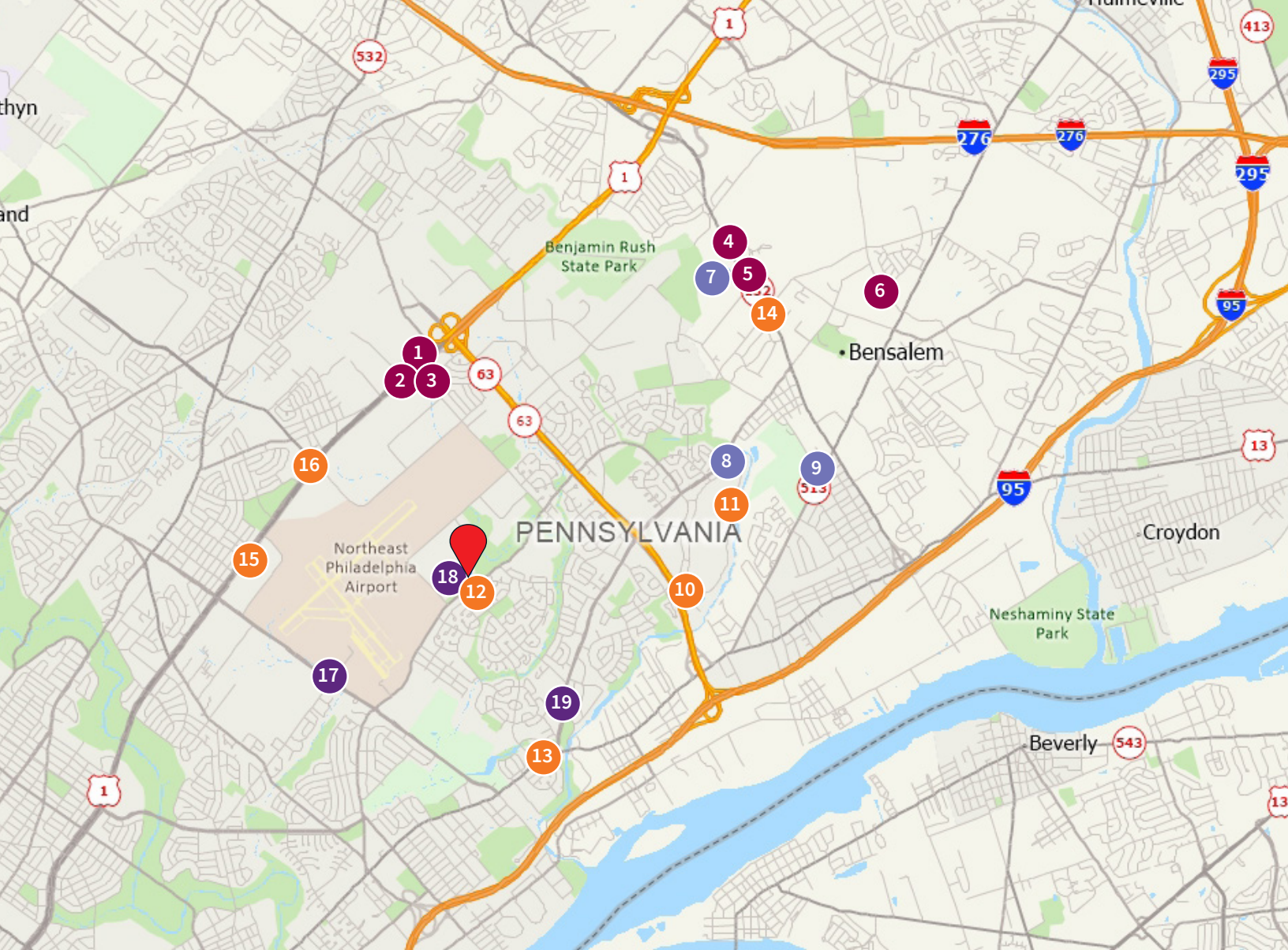


# 10400 Drummond Road







## Contemporary interior





## Nearby amenities include:

- |   |  |  |  |
|---|--|--|--|
|  Eat and Drink  |  Play   |  Shop   |  Convenience  |
| <ul style="list-style-type: none"> <li>1. Chickie's &amp; Pete's</li> <li>2. Mission BBQ</li> <li>3. Steve's Prince of Steaks</li> <li>4. Outback Steakhouse</li> <li>5. Carrabba's Italian Grill</li> <li>6. La Cena Restaurant</li> </ul> | <ul style="list-style-type: none"> <li>7. Parx Casino</li> <li>8. Dave &amp; Buster's</li> <li>9. Bensalem Country Club</li> </ul> | <ul style="list-style-type: none"> <li>10. Walmart Supercenter</li> <li>11. Philadelphia Mills</li> <li>12. Academy Plaza Shopping Center</li> <li>13. Morrell Plaza</li> <li>14. Showcase Plaza Shopping Center</li> <li>15. Whitman Square Shopping Center</li> <li>16. Red Lion Shopping Plaza</li> </ul> | <ul style="list-style-type: none"> <li>17. Northeast Philadelphia Airport</li> <li>18. United States Post Office</li> <li>19. Jefferson Torresdale Hospital</li> </ul> |

### DISCLAIMER

Although information has been obtained from sources deemed reliable, neither Owner nor JLL makes any guarantees, warranties or representations, express or implied, as to the completeness or accuracy as to the information contained herein. Any projections, opinions, assumptions or estimates used are for example only. There may be differences between projected and actual results, and those differences may be material. The Property may be withdrawn without notice. Neither Owner nor JLL accepts any liability for any loss or damage suffered by any party resulting from reliance on this information. If the recipient of this information has signed a confidentiality agreement regarding this matter, this information is subject to the terms of that agreement. ©2021. Jones Lang LaSalle IP, Inc. All rights reserved.

