



# For Sublease

## **Class A office space now available**

- 11,449 SF for sublease on 4<sup>th</sup> floor
- \$14.00 PSF (FSG)
- Term through 4/30/2023
- Building is 55,000 SF and 4 stories
- Parking ratio: 3.64/1,000 SF
- Conveniently located with easy access to I-65 and 459

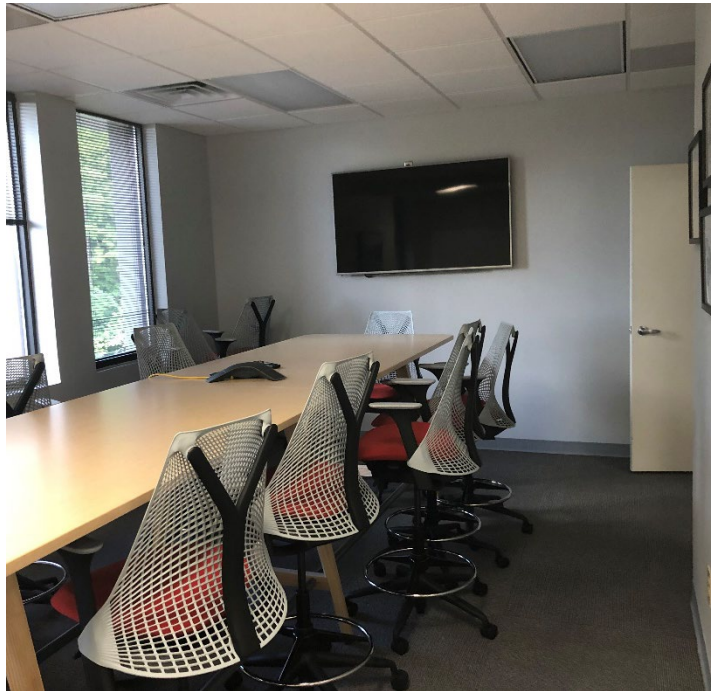
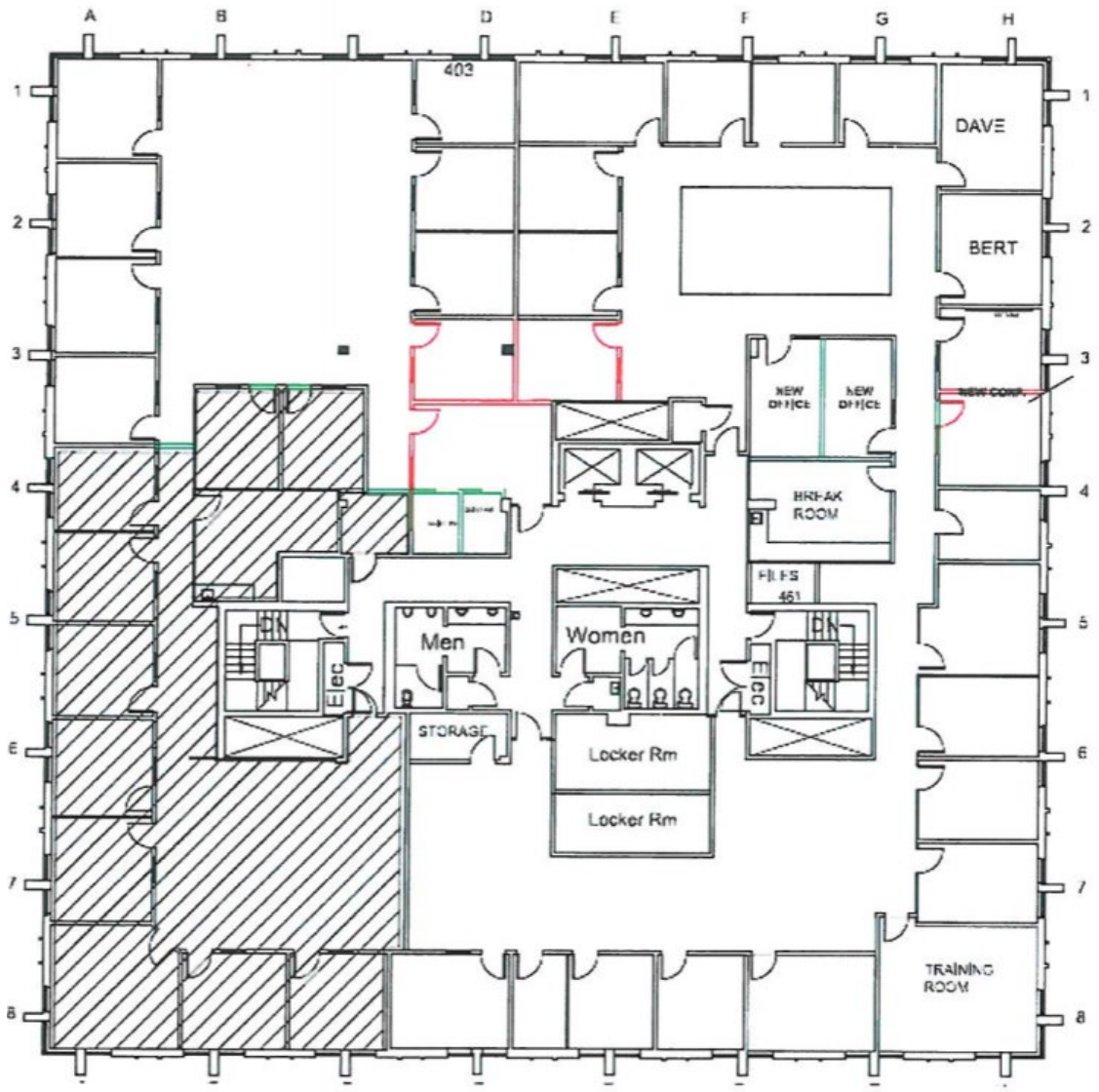
**Highpoint Office Center**  
**400 Vestavia Parkway**  
**Birmingham, AL**

---

**Carter Burwell**  
+1 205 610 8681  
[Carter.burwell@am.jll.com](mailto:Carter.burwell@am.jll.com)



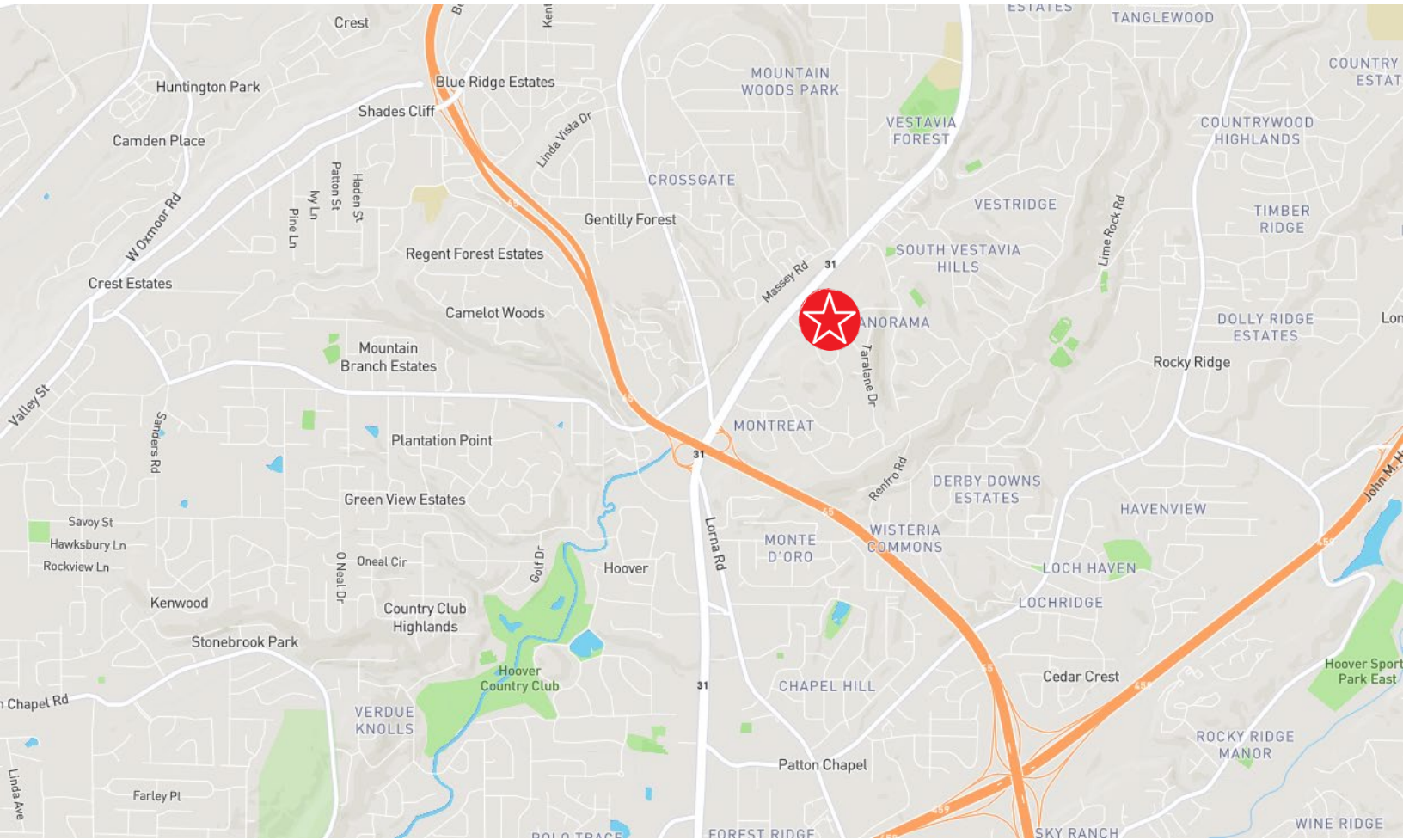




Disclaimer @ 2020 Jones Lang LaSalle IP, Inc. All rights reserved. All information contained herein is from sources deemed reliable; however, no representation or warranty is made to the accuracy thereof.







Disclaimer @ 2020 Jones Lang LaSalle IP, Inc. All rights reserved. All information contained herein is from sources deemed reliable; however, no representation or warranty is made to the accuracy thereof.

