



For Lease

8,200 SF available in the heart of Old City Philadelphia

- 4,200 SF on the lower level (office)
- 1,000 SF on the 1st floor (retail)
- 3,000 SF on the 2nd floor (office)
- Modern elevators, Individualized HVAC control
- Restrooms on each floor
- Intercom entry system
- On-site owner
- On-street parking, 6 parking lots within 1 block
- Close proximity to the Bourse and other retail/dining locations

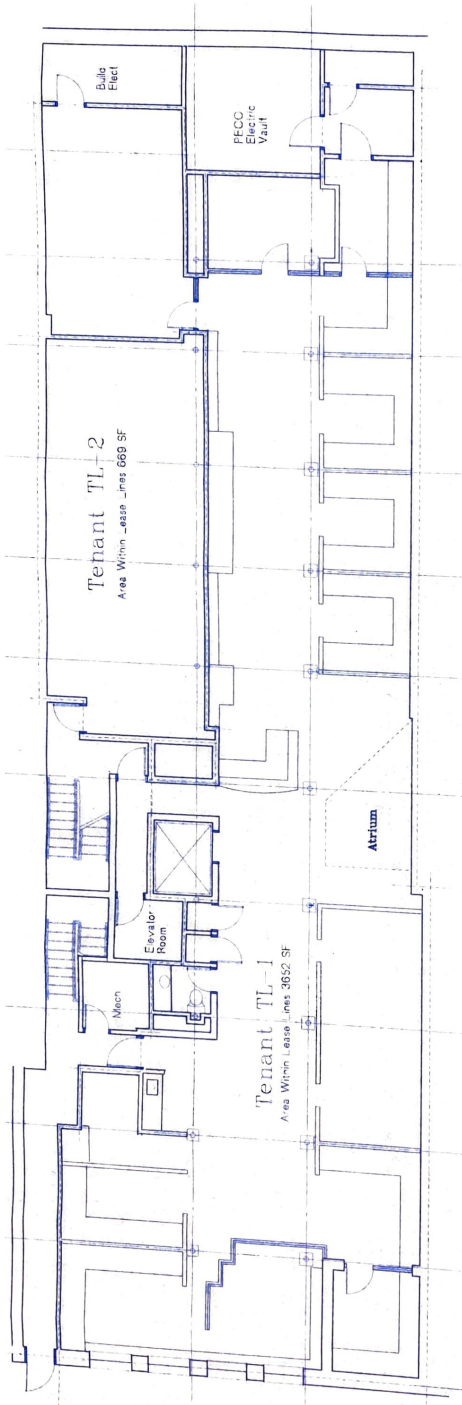
**128 Chestnut Street
Philadelphia, PA 19106**

Alex Breitmayer
+1 215 399 1813
alex.breitmayer@am.jll.com

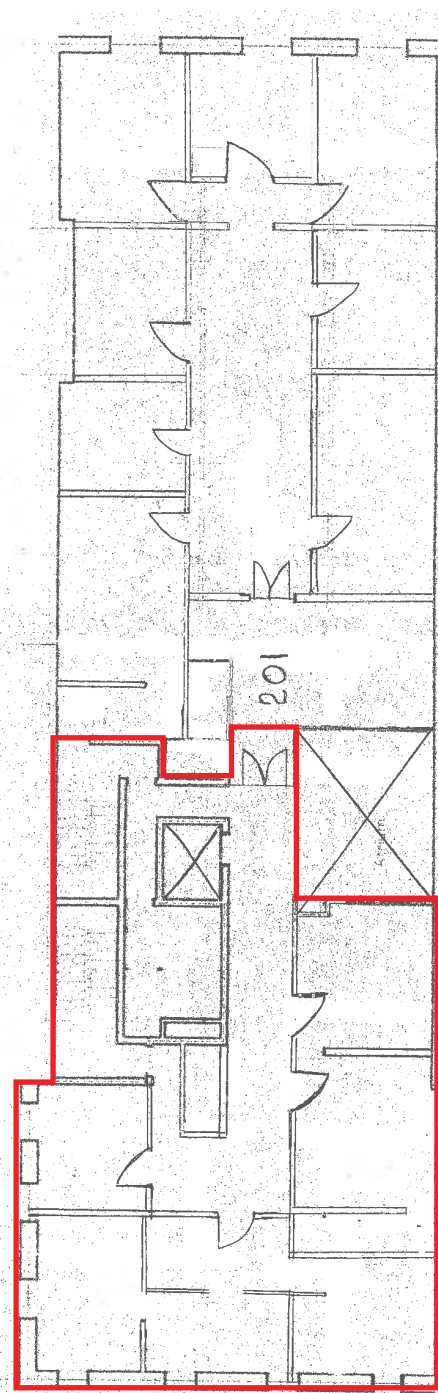
Jones Lang LaSalle Brokerage, Inc.
1650 Arch Street, Suite 2500
Philadelphia, PA 19103
+1 215 988 5500
jll.com/philadelphia



Lower level - 4,200 s.f.



2nd floor - 3,000 s.f.



128 Chestnut Street
Philadelphia, PA 19106

Although information has been obtained from sources deemed reliable, neither Owner nor JLL makes any guarantees, warranties or representations, express or implied, as to the completeness or accuracy as to the information contained herein. Any projections, opinions, assumptions or estimates used are for example only. There may be differences between projected and actual results, and those differences may be material. The Property may be withdrawn without notice. Neither Owner nor JLL accepts any liability for any loss or damage suffered by any party resulting from reliance on this information. If the recipient of this information has signed a confidentiality agreement regarding this matter, this information is subject to the terms of that agreement. ©2021. Jones Lang LaSalle IP, Inc. All rights reserved.

