



# PLAZA2020

2020 CAMINO DEL RIO NORTH

# Sophisticated. Modern. Revitalized.

Plaza 2020 is centrally located in the Mission Valley area of San Diego. This Class “A” project is easily accessible from nearly all major interstates and highways in San Diego; I-5, I-8, I-805 and Hwy. 163.



On-site restaurants, bank and many other retail services



Walking distance to Mission Valley mall and the trolley



Direct access to I-8, I-15, I-805 and Hwy.163



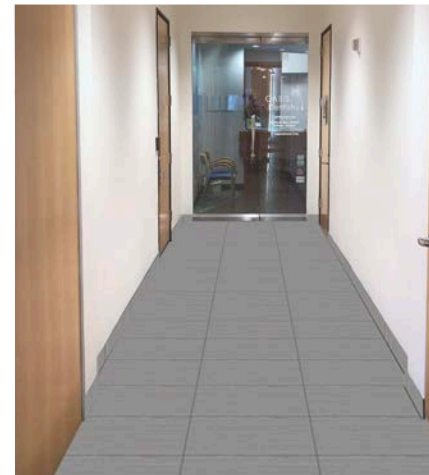
Shower and locker facilities



New modern lobby



New common corridor tile



A modern office lounge area featuring a dark wood floor, a black rug, and several contemporary chairs. The walls are composed of vertical panels, some of which are frosted glass. The ceiling has several pendant lights and recessed lighting. A television is mounted on the wall to the right.

# PLAZA2020

2020 CAMINO DEL RIO NORTH

**BUILDING SIZE:**  
105,796 SF Rentable

**TOTAL STORIES:**  
10-Story

**ZONING:**  
MVPD-MV-M/SP

**YEAR BUILT**  
1970; Reconstruction in 2000

**PARKING:**  
Abundant on-site surface parking

**FIRE AND LIFE SAFETY:**  
Fully Sprinklered

[www.Plaza2020.com](http://www.Plaza2020.com)



# Building-Top Signage Opportunity

Visible to over 201,900 cars a day!





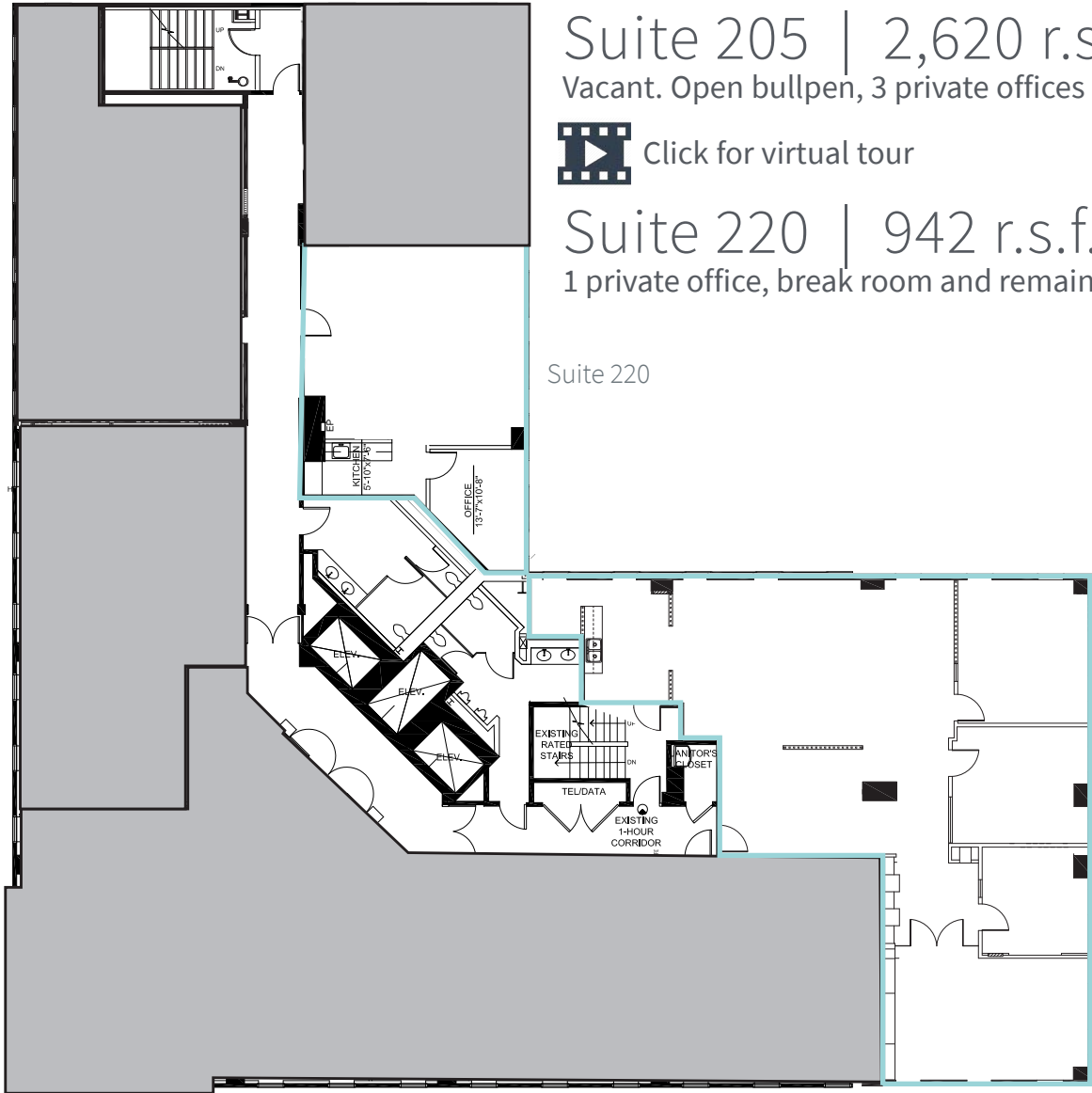
# Availability

SUITE	RSF	RENT	COMMENTS
205	2,620	\$3.15 FS	Vacant. Open bullpen, 3 private offices and break room.
220	942	\$3.15 FS	1 private office, break room and remainder open.
300*	4,337	\$3.15 FS	Vacant.
305*	3,075	\$3.15 FS	Vacant.
500	5,149	\$3.15 FS	Avail. 9/1/22
520	1,752	\$3.15 FS	Avail. 9/1/22
610	4,771	\$3.15 FS	Vacant.
640	1,251	\$3.15 FS	Vacant.
800	5,870	\$3.20 FS	Avail. 3/1/22
1000	6,317	\$3.20 FS	Conference room, 4 private offices & large open area.

\*Suites 300 & 305 are contiguous for up to 7,412 RSF

For office information:  
**Richard Gonor**  
tel +1 858 410 1243  
richard.gonor@am.jll.com  
License #: 01142178

**Tony Russell, sior**  
tel +1 858 410 1213  
tony.russell@am.jll.com  
License #: 01275372



Suite 205 | 2,620 r.s.f.  
Vacant. Open bullpen, 3 private offices & break room.



Click for virtual tour

Suite 220 | 942 r.s.f.  
1 private office, break room and remainder open.

Suite 220

Suite 205

PLAZA2020

2020 CAMINO DEL RIO NORTH

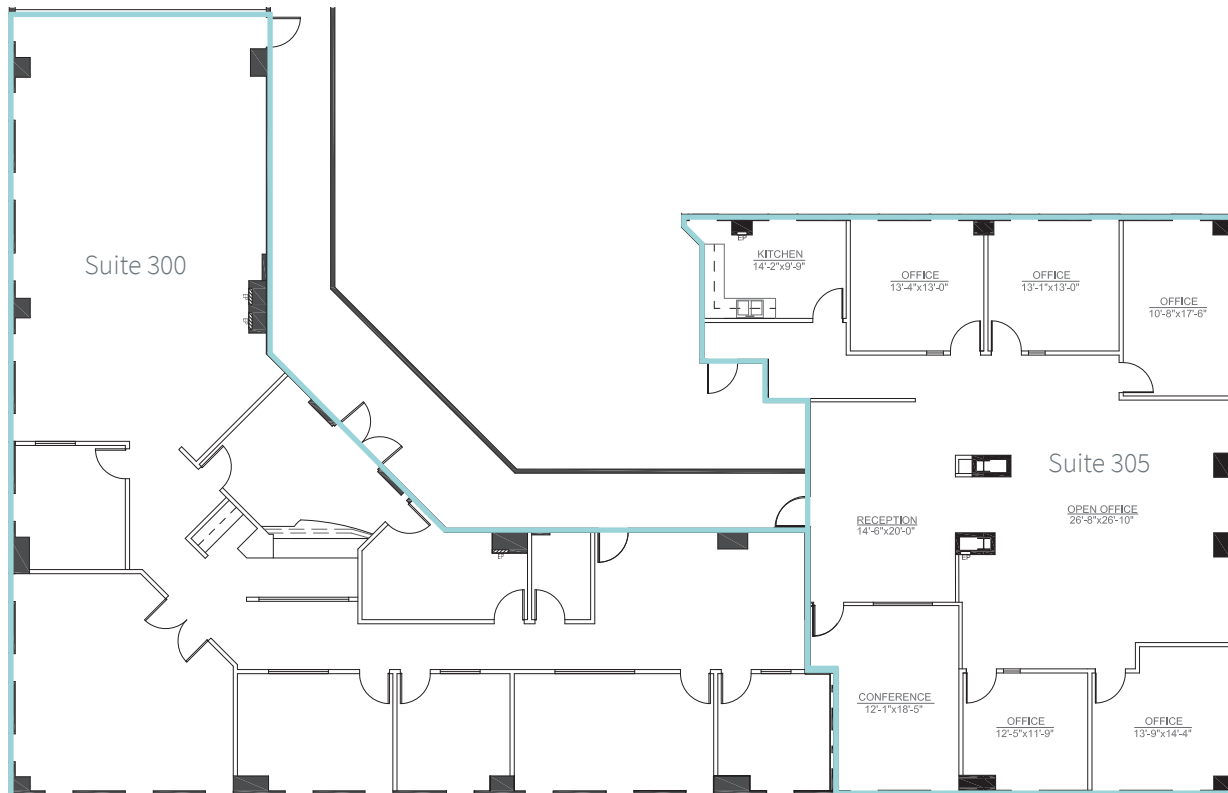
Suite 300 | 4,337 r.s.f.  Click for virtual tour

Vacant.

Suite 305 | 3,075 r.s.f.

Vacant.

\*Suites 300 & 305 are contiguous for up to 7,412 RSF



For office information:

**Richard Gonor**  
tel +1 858 410 1243  
richard.gonor@am.jll.com  
License #: 01142178

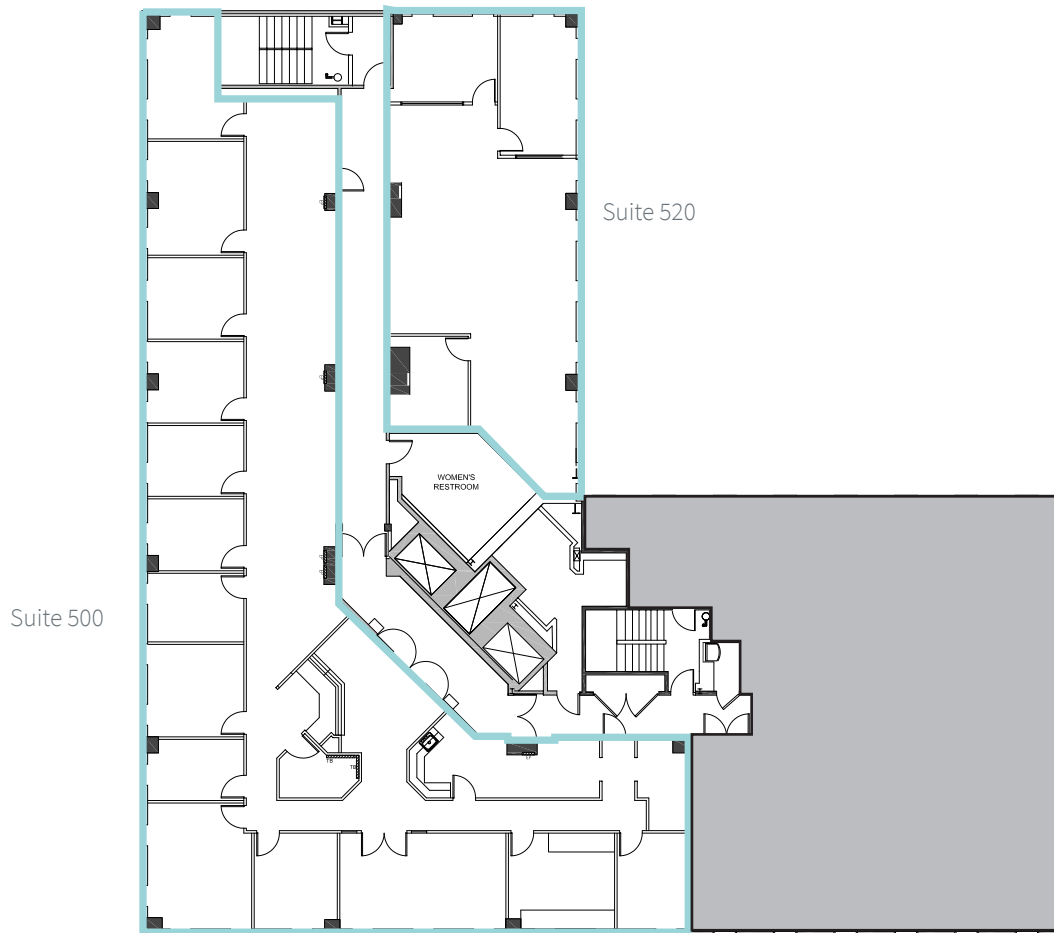
**Tony Russell, sior**  
tel +1 858 410 1213  
tony.russell@am.jll.com  
License #: 01275372

Suite 500 | 5,149 r.s.f.

Available 9/1/22.

Suite 520 | 1,752 r.s.f.

Available 9/1/22.



For office information:

**Richard Gonor**

tel +1 858 410 1243

[richard.gonor@am.jll.com](mailto:richard.gonor@am.jll.com)

License #: 01142178

**Tony Russell, sior**

tel +1 858 410 1213

[tony.russell@am.jll.com](mailto:tony.russell@am.jll.com)

License #: 01275372



Suite 610 | 4,771 r.s.f.  Click for virtual tour

Vacant.

Suite 640 | 1,251 r.s.f.

Vacant.

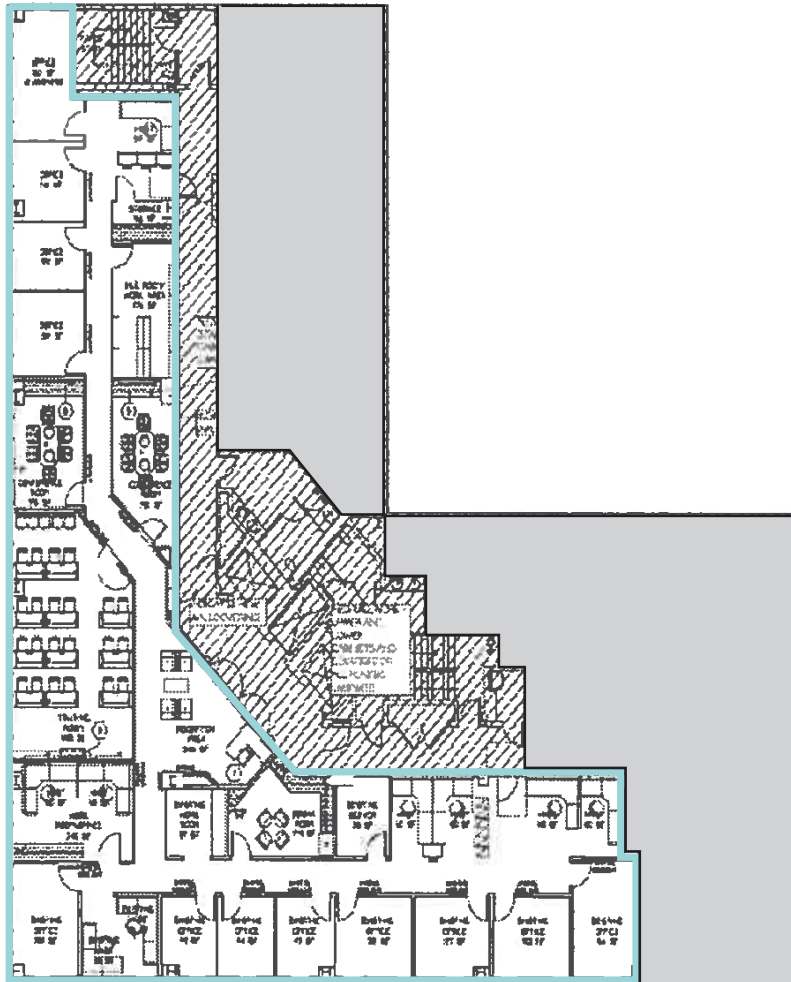


PLAZA2020

2020 CAMINO DEL RIO NORTH

Suite 800 | 5,870 r.s.f.

Avail. 3/1/22

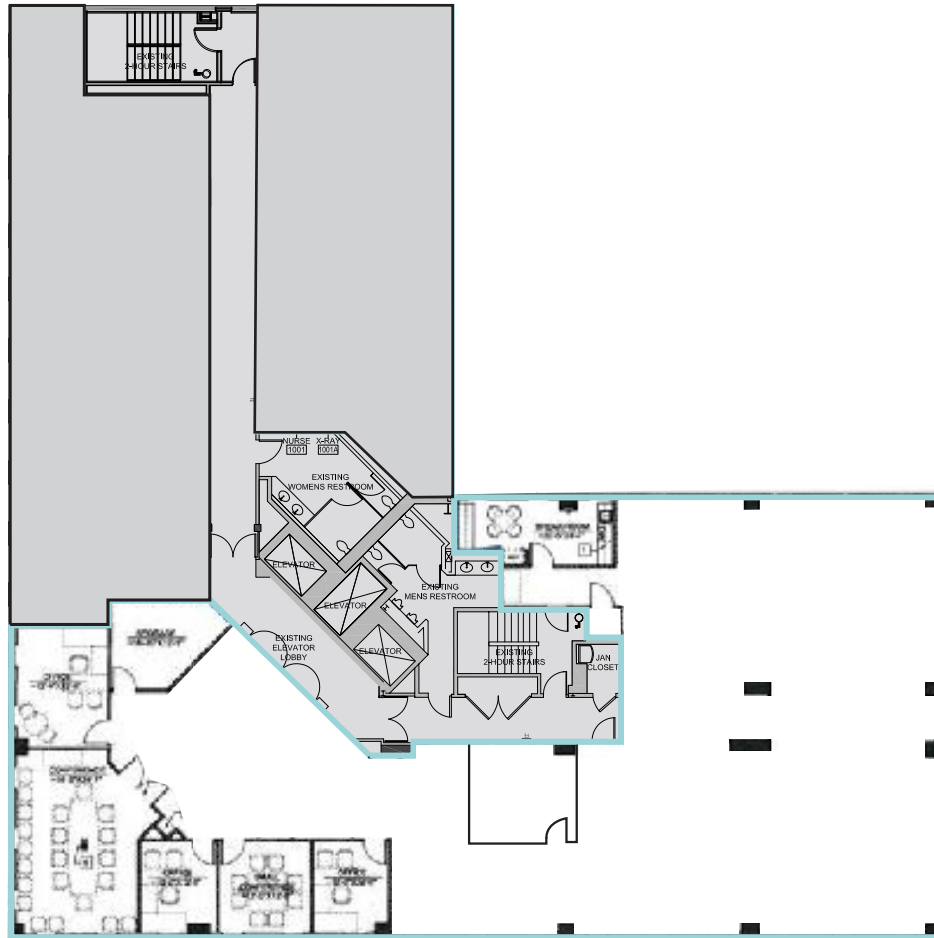


PLAZA2020

2020 CAMINO DEL RIO NORTH

# Suite 1000 | 6,317 r.s.f. Click for virtual tour

Conference room, 4 private offices & large open area.



Suite 1000

For office information:

**Richard Gonor**  
tel +1 858 410 1243  
richard.gonor@am.jll.com  
License #: 01142178

**Tony Russell, sior**  
tel +1 858 410 1213  
tony.russell@am.jll.com  
License #: 01275372





Office Depot, O's American Kitchen, Daphne's Greek, Wendy's, Jersey Mike's, Sombrero Mexican, Ka Prao Thai

Panda Express, Quizno's Subs, Sammy's Wood Fired Pizza, Starbucks, On the Border, California Fish Grill, Kebab Shop, Panda Express, Hooters, Pho Cali

Bank of America

**PLAZA2020**  
2020 CAMINO DEL RIO NORTH

Best Buy

Chipotle, Corner Bakery, Pei Wei, Robek's

Broken Volk

Pick Up Stix, Taco Bell, In and Out Burger, Rubio's, Subway, El Pollo Loco, AT&T

Gordon Biersch, King's Fish House, Coffee Bean & Tea Leaf, Fuddrucker's, Habbit Burger, Trader Joe's, Lazy Dog

**Mission Valley Center**  
Buffalo Wild Wings, Andale Mexican Taqueria, Bennigan's, Burger King, Charley's Grilled Subs, Chevy's Fresh Mex, Great Khans Mongolian Festival, Hot Dog on a Stick, Italia Express, Manchu Wok, O-nami, Outback Steakhouse, Raw Mana, Royal India Express, Ruby's Diner, Sarku Japan, The Restaurant, Subway

— Trolley line  
● Trolley stops

For office information:  
Richard Gonor  
tel +1 858 410 1243  
richard.gonor@am.jll.com  
License #: 01142178

Tony Russell, sior  
tel +1 858 410 1213  
tony.russell@am.jll.com  
License #: 01275372

**PLAZA2020**  
2020 CAMINO DEL RIO NORTH  
www.Plaza2020.com