



1234

19TH STREET, NW

FEATURES

- One block from the Dupont Metro Redline
- Four blocks from Farragut West Metro Blue/Silver/Orange line
- Convenient to Hotels, Restaurants and Shopping
- Parking (tenant-only)
- On-Site Engineer
- Building Security
- Building Hours M-F: 7am-6pm, Sat: 8am-2pm

SUITE	SIZE / RSF	POSSESSION	RATE / FS
610	1,313	Immediate	\$48.00 - \$50.00

LOCAL AMENITIES:



FOR LEASING INFORMATION, PLEASE CONTACT:

SETH A. BENHARD
Senior Managing Director
+1 202 719 6238
Seth.Benhard@am.jll.com

JULIA M. SCOTT
Vice President
+1 202 719 5580
Julia.Scott@am.jll.com

MAURA P. TESCHNER
Senior Associate
+1 202 719 6213
Maura.Teschner@am.jll.com

**ZUCKERMAN
GRAVELY**

JLL.COM/DC

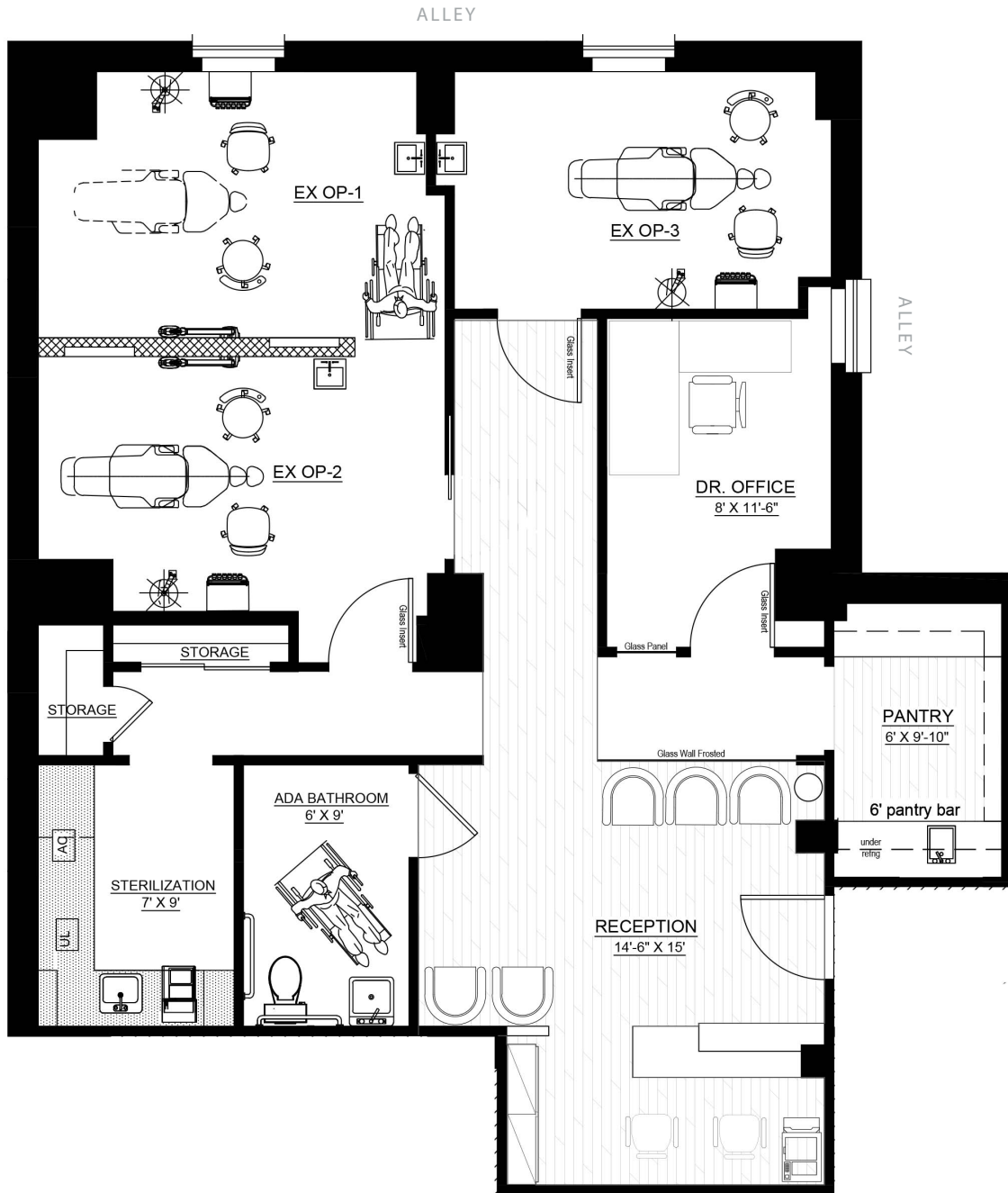


FLOOR PLAN

1234 19TH STREET, NW
WASHINGTON, DC

SUITE 610

Marketing Plan
1,313 SF



FOR LEASING INFORMATION, PLEASE CONTACT:

SETH A. BENHARD
Senior Managing Director
+1 202 719 6238
Seth.Benhard@am.jll.com

JULIA M. SCOTT
Vice President
+1 202 719 5580
Julia.Scott@am.jll.com

MAURA P. TESCHNER
Senior Associate
+1 202 719 6213
Maura.Teschner@am.jll.com

