

# 114,334 SF Available For Sublease



Term: Available through December 31, 2024  
Rate: \$12.50 PSF/Gross

## 6101 45th Street North

Pinellas Park, FL 33714



114,334  
Square Feet



Built in 2022



100% HVAC



Brand New, First  
Generation Space



36' Clear Height

### Please contact

John Dunphy  
Jones Lang LaSalle Brokerage, Inc., a licensed real estate broker  
+1 727 744 2356  
johnc.dunphy@jll.com





# Property Specifications

6101 35th Street North, Pinellas Park, FL

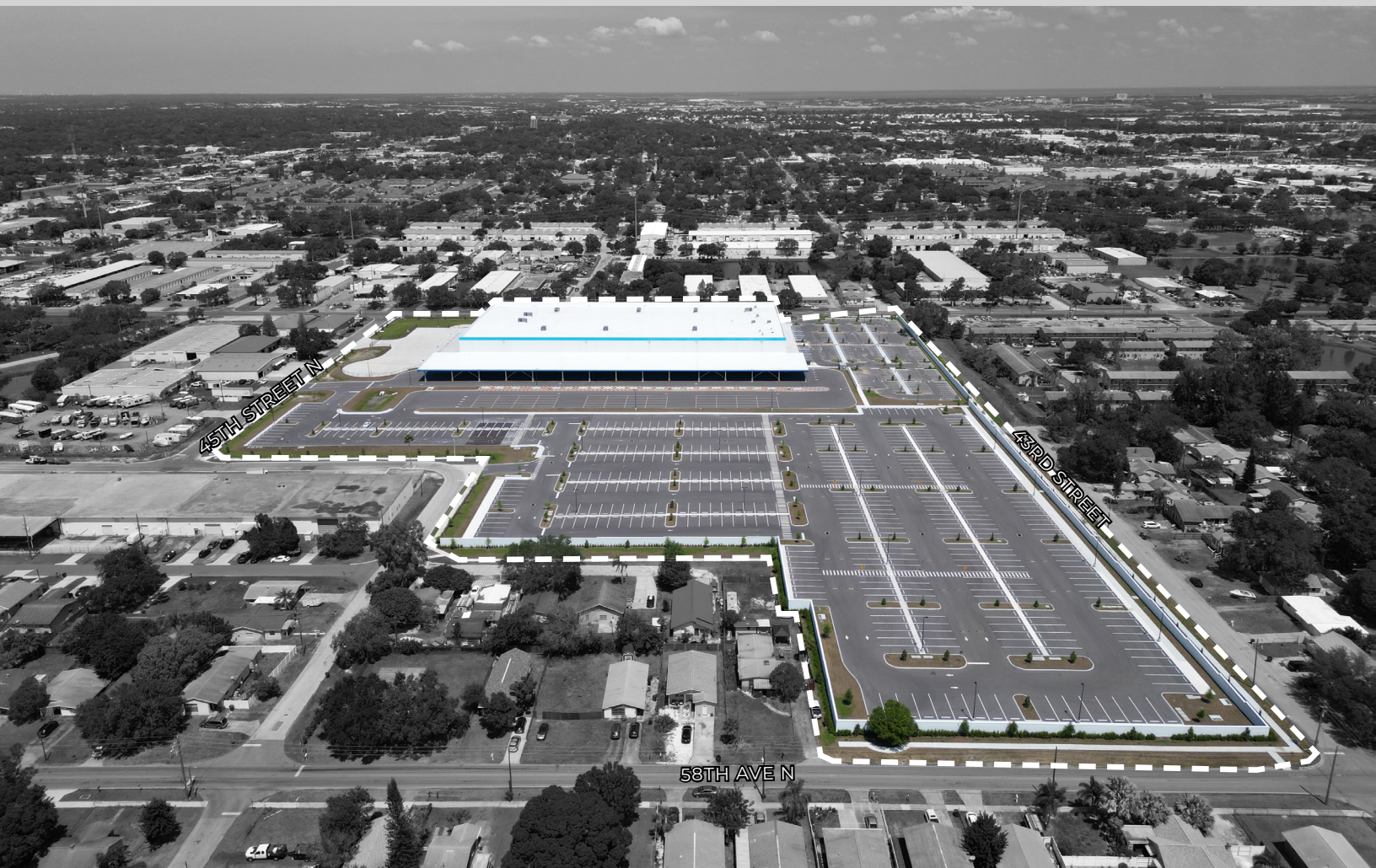
**114,334 SF**  
SQUARE FEET  
AVAILABLE

**2022**  
YEAR BUILT

**538**  
VAN PARKING  
SPACES

**192**  
AUTO PARKING  
SPACES

**11**  
LOADING  
DOCKS





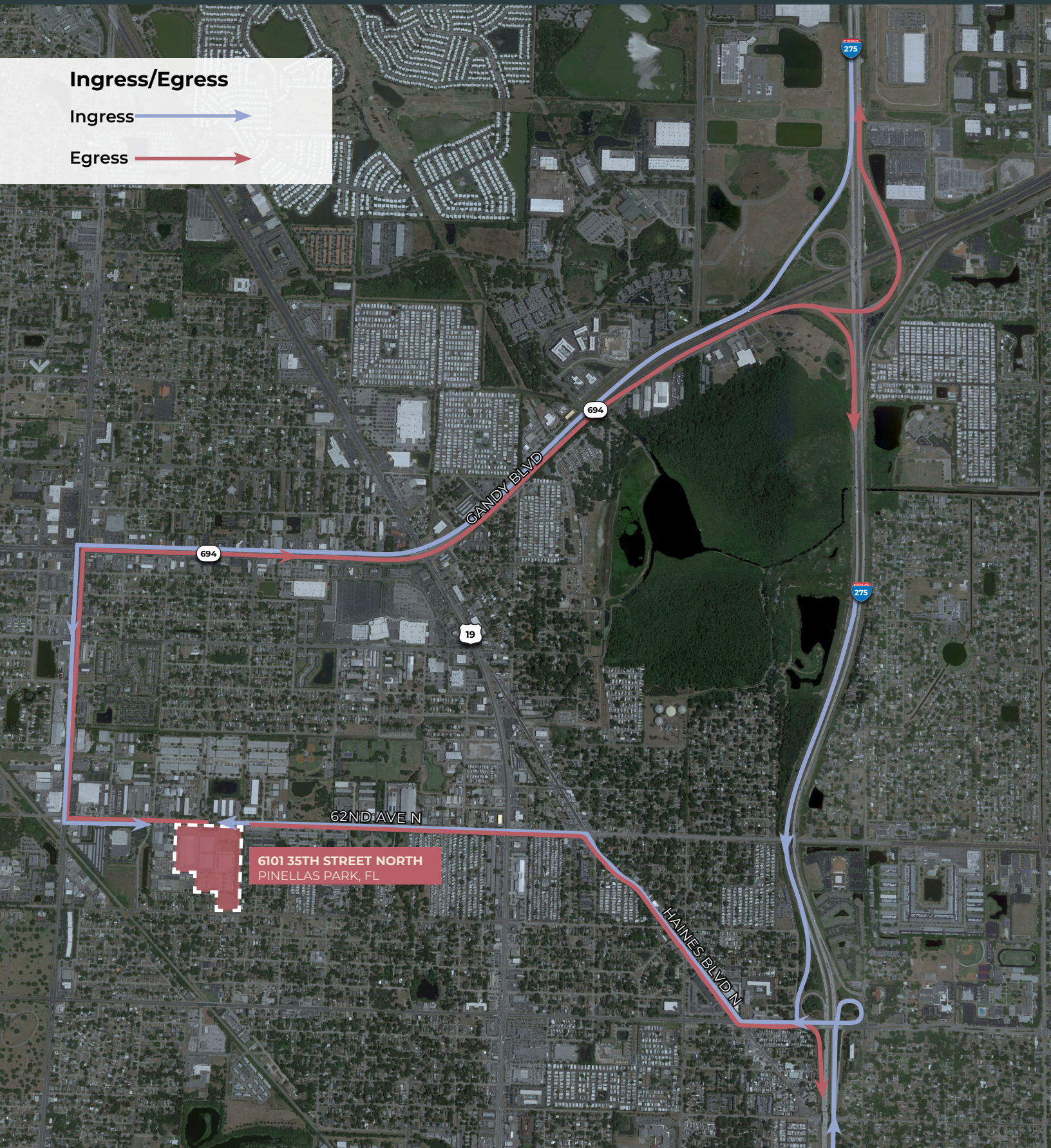
# Immediate Interstate 275 Access

6101 35th Street North, Pinellas Park, FL

## Ingress/Egress

Ingress →

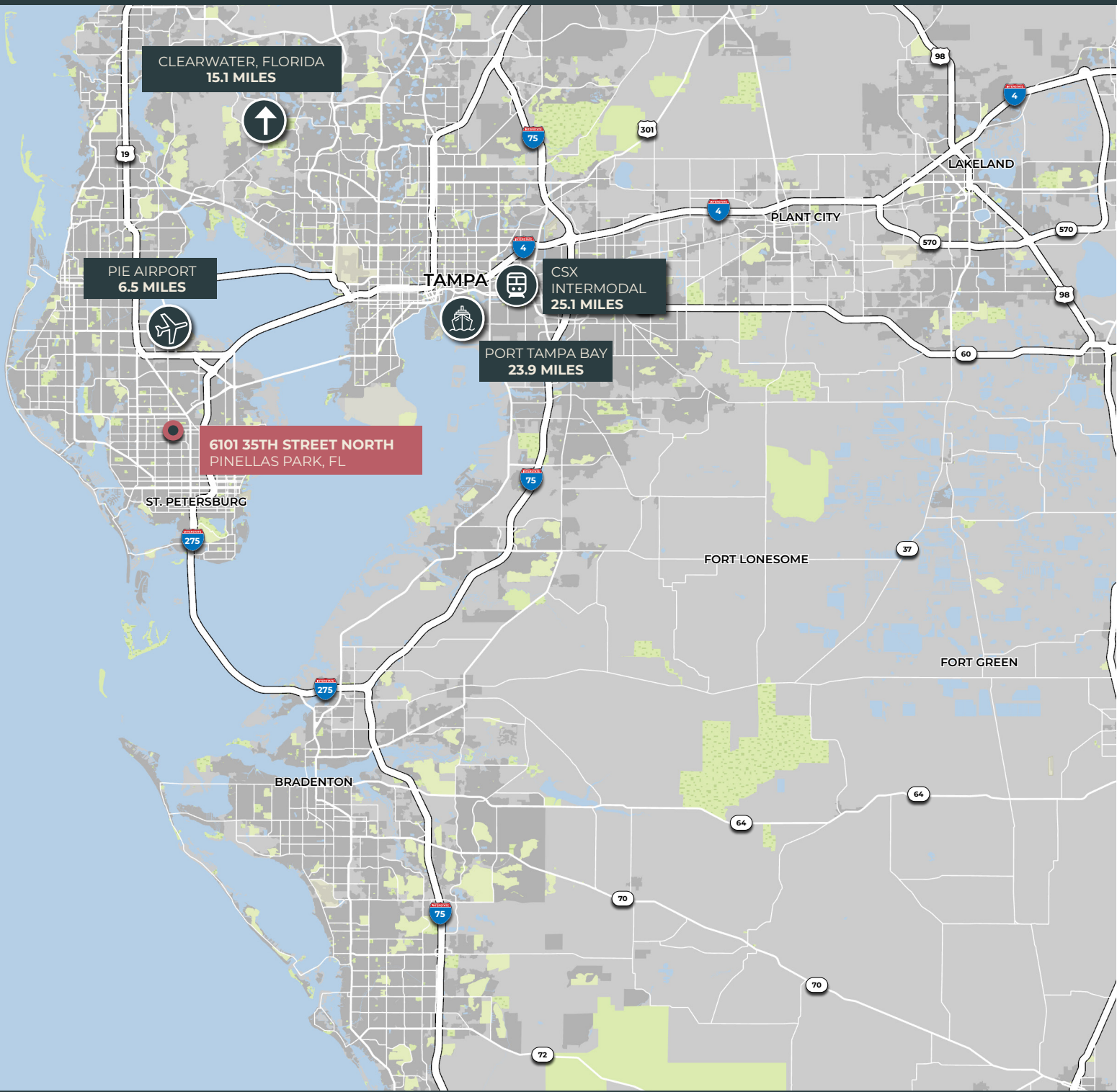
Egress →





# Premier Regional Connectivity

6101 35th Street North, Pinellas Park, FL



KBCADVISORS

Although information has been obtained from sources deemed reliable, neither Owner nor JLL makes any guarantees, warranties or representations, express or implied, as to the completeness or accuracy as to the information contained herein. Any projections, opinions, assumptions or estimates used are for example only. There may be differences between projected and actual results, and those differences may be material. The Property may be withdrawn without notice. Neither Owner nor JLL accepts any liability for any loss or damage suffered by any party resulting from reliance on this information. If the recipient of this information has signed a confidentiality agreement regarding this matter, this information is subject to the terms of that agreement. ©2022. Jones Lang LaSalle IP, Inc. All rights reserved.