

## Bradburn Village 4451 Main Street Westminster, CO

### Property Overview

- 3,892 SF available in Whole Foods anchored center (potentially demisable)
- 125 AC mixed-used neighborhood development featuring 750 residential units
- Over 100,000 SF retail and office space
- Strong demographics and great visibility
- Easy ingress/egress
- Great co-tenancy! Join Cava, Ted's Montana Grill, Corepower Yoga, T-Mobile and many more!

**Adam Rubenstein**

303-257-1481

Adam.Rubenstein@am.jll.com

**Sarah Alfano**

303-263-5362

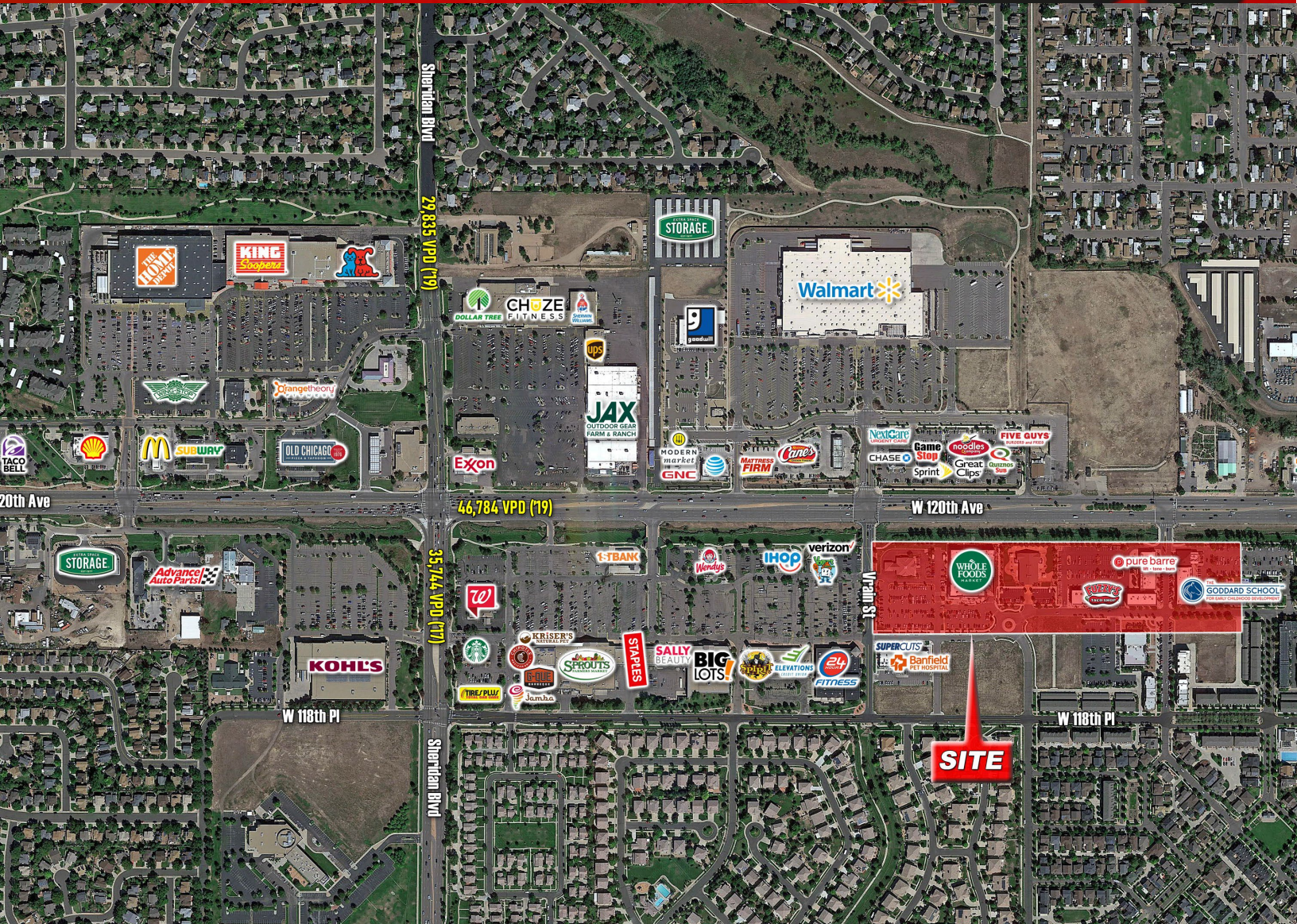
Sarah.Alfano@am.jll.com

1225 17<sup>th</sup> St. , Suite #1900

Denver, CO 80202

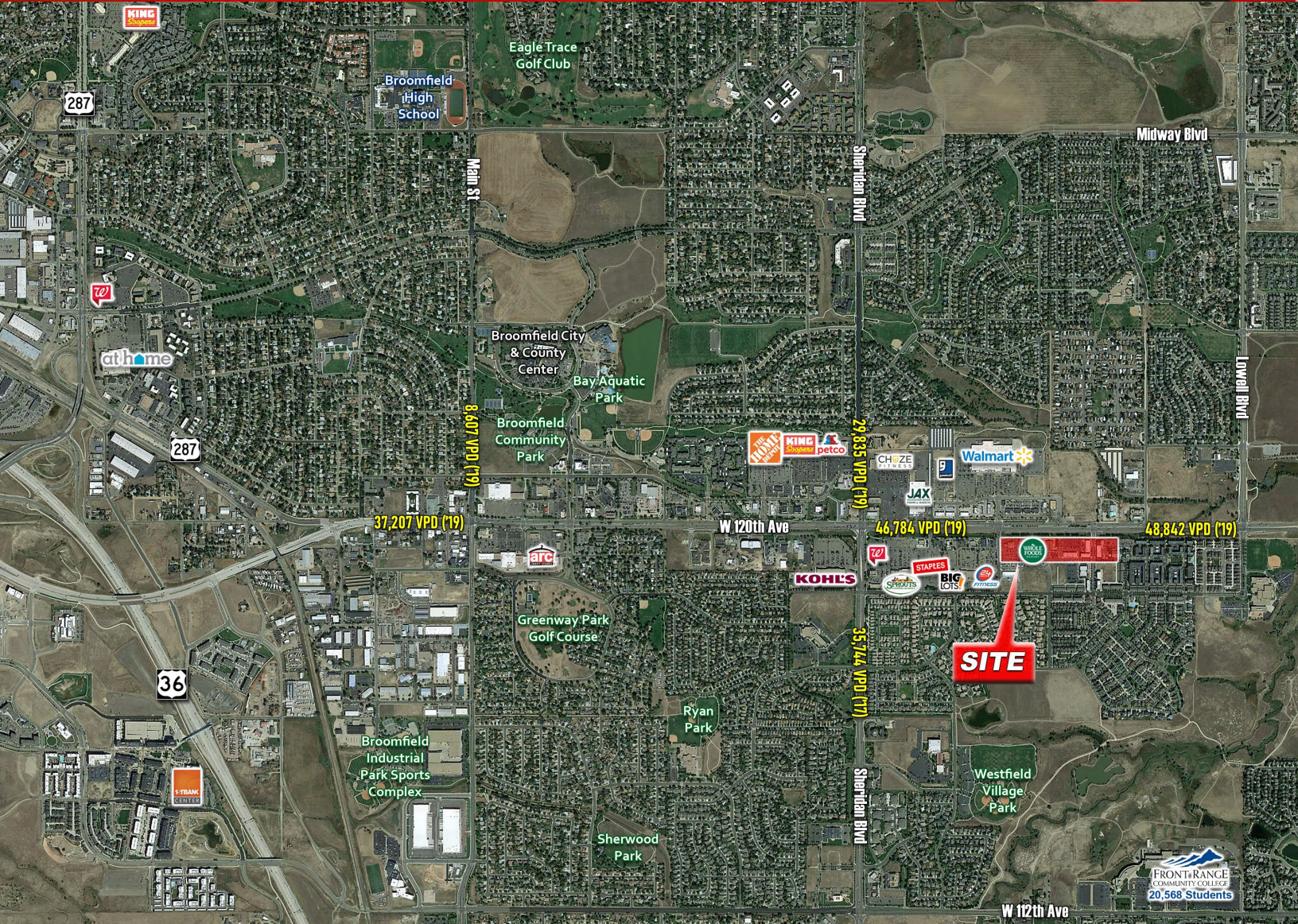
www.jll.com

# For Lease



Demographics	1 Mi	3 Mi	5 Mi
2020 Est. Pop	13,225	111,782	271,527
2020 Households	4,876	42,586	103,663
2020 Daytime Pop	5,662	45,067	112,922
2020 Average Household Income	\$124,468	\$114,929	\$99,305

# For Lease



## Jones Lang LaSalle Brokerage, Inc.

**Adam Rubenstein**  
303-257-1481  
Adam.Rubenstein@am.jll.com

**Sarah Alfano**  
303-263-5362  
Sarah.Alfano@am.jll.com

1225 17<sup>th</sup> St. Suite | #1900  
Denver, CO 80202  
www.jll.com