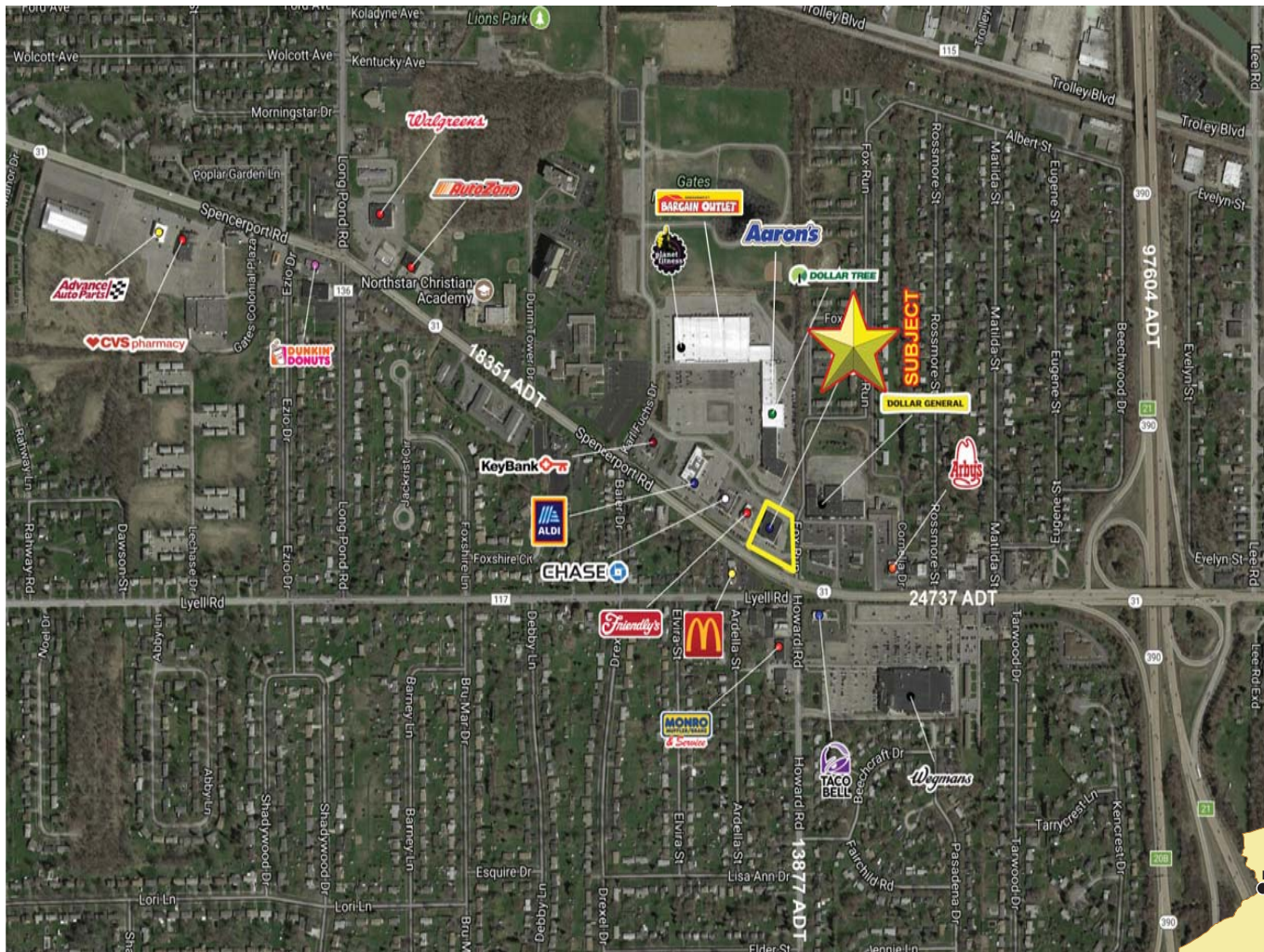




# Rochester, New York

## 2 SPENCERPORT ROAD

### RETAIL / MEDICAL / OFFICE



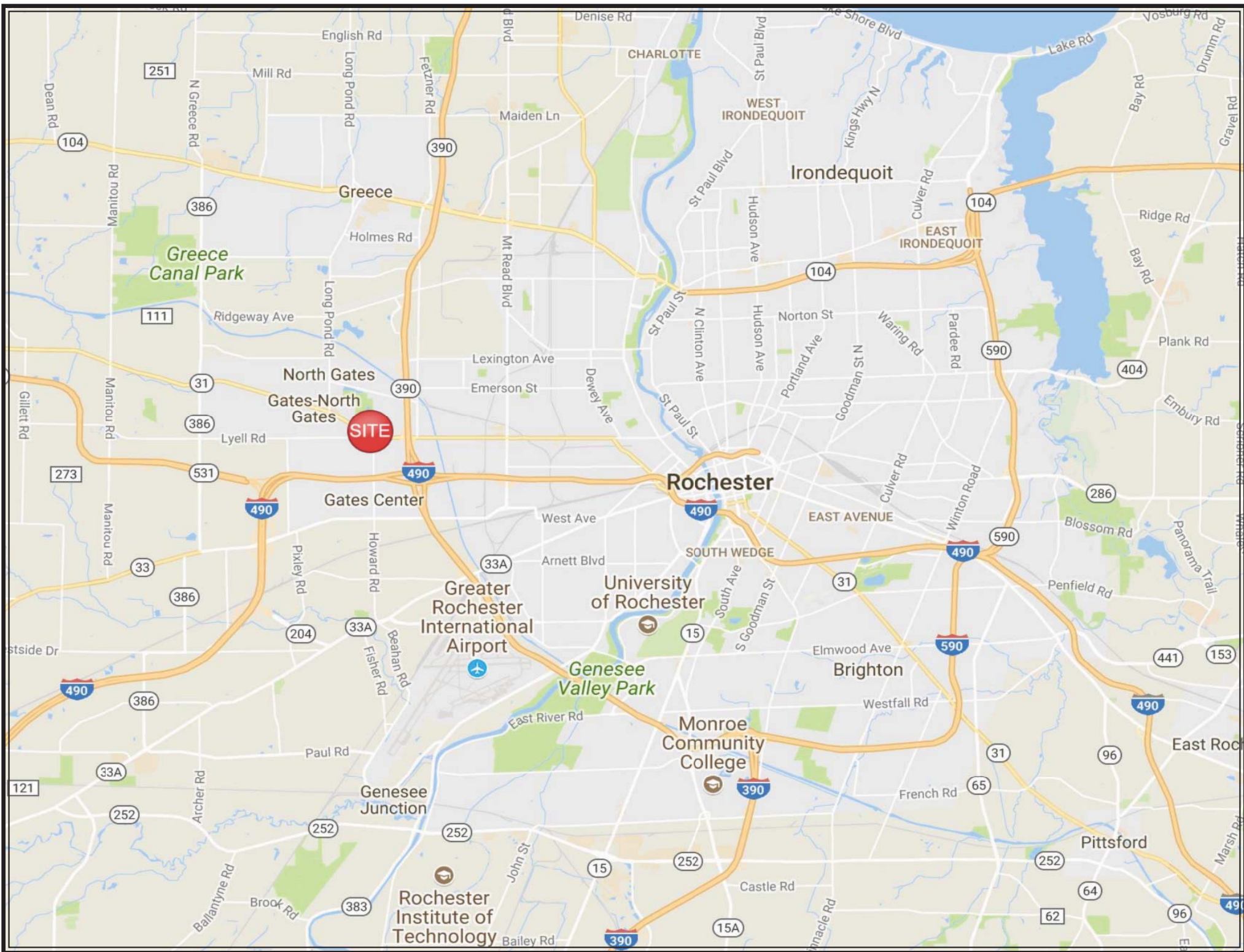
- Freestanding building 12,177 square feet centrally located at heavily traveled intersection with nearby Wegmans, Dollar Tree, Walgreens and Aldi Supermarket.
- Average daily traffic in excess of 37,000 cars per day.
- Easily accessible from Interstate 390 and a strong residential population.
- Within 1 mile of Kodak Park and Distribution, Rochester International Airport and Delphi Automotive Systems (General Motors).

Contact:  
James W Lavelle  
Real Estate Associate Broker  
Widewaters Group Inc.  
Office: (315) 445-8613  
Mobile: (315) 263-6326  
jlavelle@widewaters.com

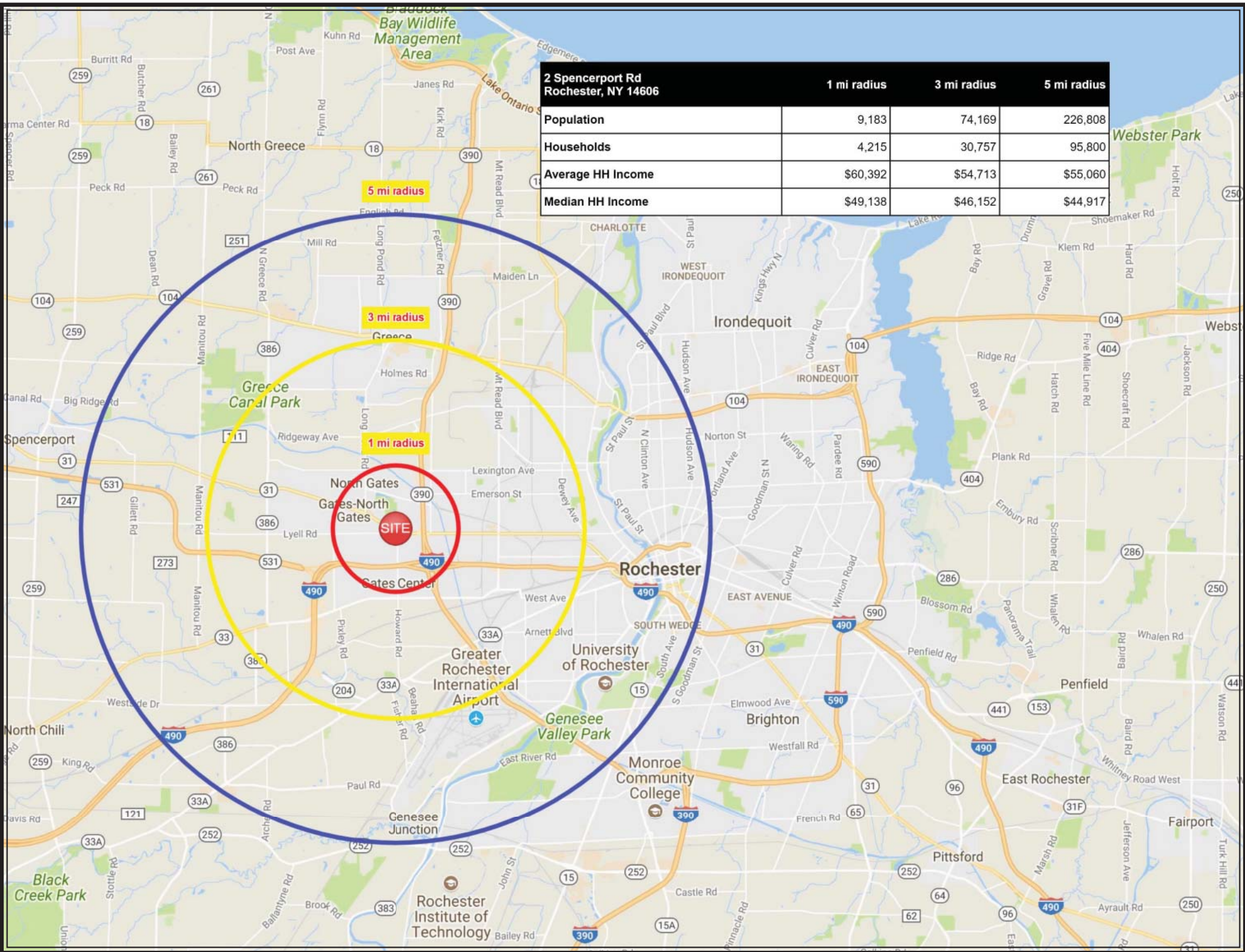
Tracy S Lauer  
Real Estate Associate Broker  
Widewaters Group Inc.  
Office: (315) 445-8631  
Mobile: (315) 382-1373  
tlauer@widewaters.com



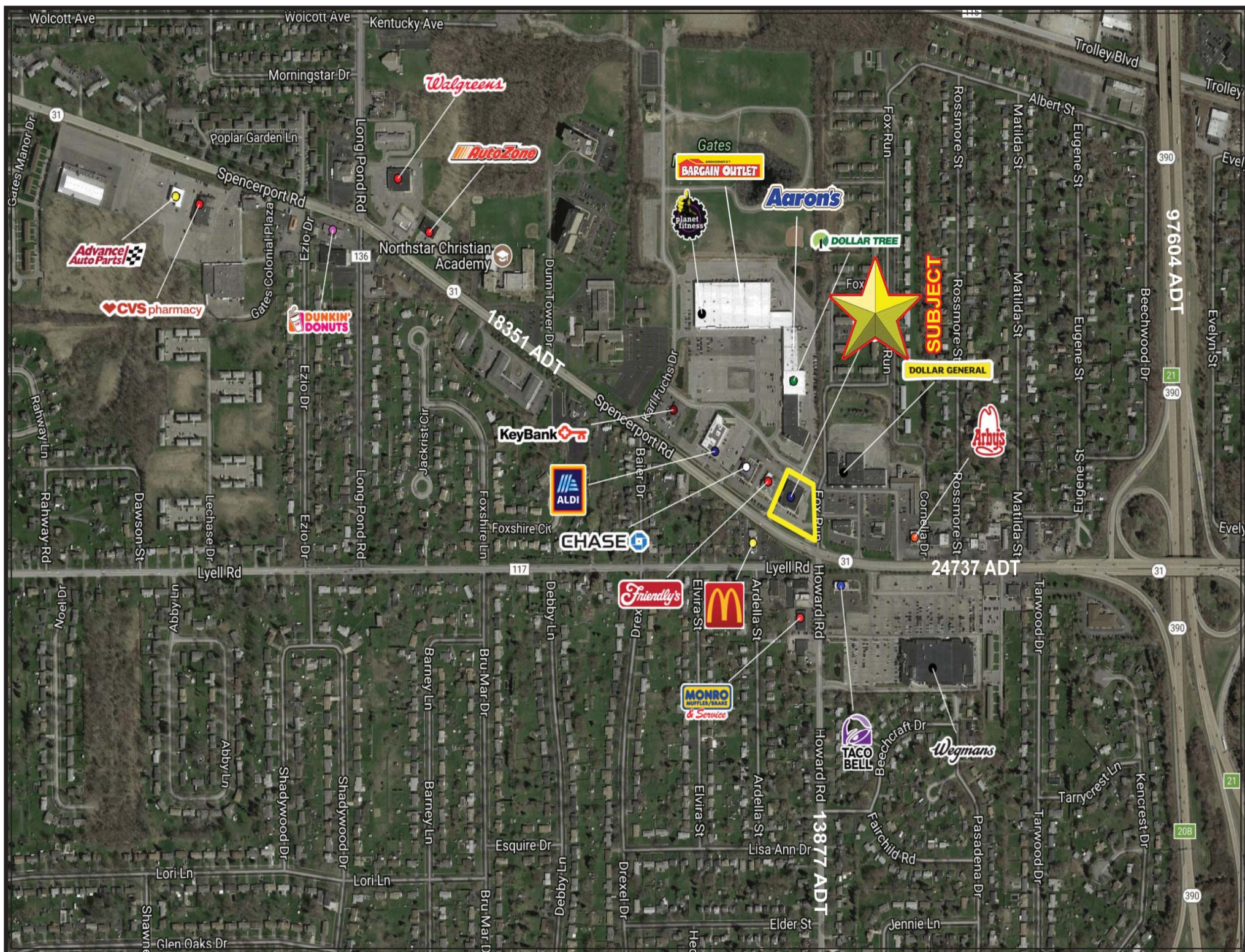
















ALDI

CHASE

Friendly's

DOLLAR GENERAL

18351 ADT

Spencerport Rd

McDonald's

Fox Run



Lyell Ave

Dance Dimensions  
By Susan

24737 ADT



